



# CITY OF MILWAUKIE

TRAFFIC REGULATION NO.: **515**

DATED: **5/30/2023**

As provided in the City of Milwaukie Municipal Code Chapter 10.08 Section 020, and having based my determination only upon:

- a. Traffic engineering principles and traffic investigations;
- b. Standards, limitation and rules promulgated by the State Highway Commission;
- c. Other recognized traffic control standards;
- d. Required needs.

### General Description of Regulation:

Install parking stalls on the east side of Harrison Street between 21<sup>st</sup> and 23<sup>rd</sup> Avenue

### General Location:

Harrison Street between 21<sup>st</sup> and 23<sup>rd</sup> Avenue

### Need for Traffic Regulation:

With the current area marked as a bus loading zone, parents of students at the Portland Waldorf School consistently park in this space to pick up and drop off

### Description for New Traffic Control Measure(s):

- Install "School Days", "No Parking Drop Off/ Pick Up 8am -5pm parking stalls on the east side of Harrison Street in front of the Portland Waldorf School to replace the current bus zone.
- Install 4" lane striping with "THRU TRAFFIC" thermoplastic.
- Install "No Parking" signage at driveway of the school

Steve Adams, City Engineer

**Acting City Engineer for Steve Adams 5/22/2023**

TRG Author

5/22/2023

Date

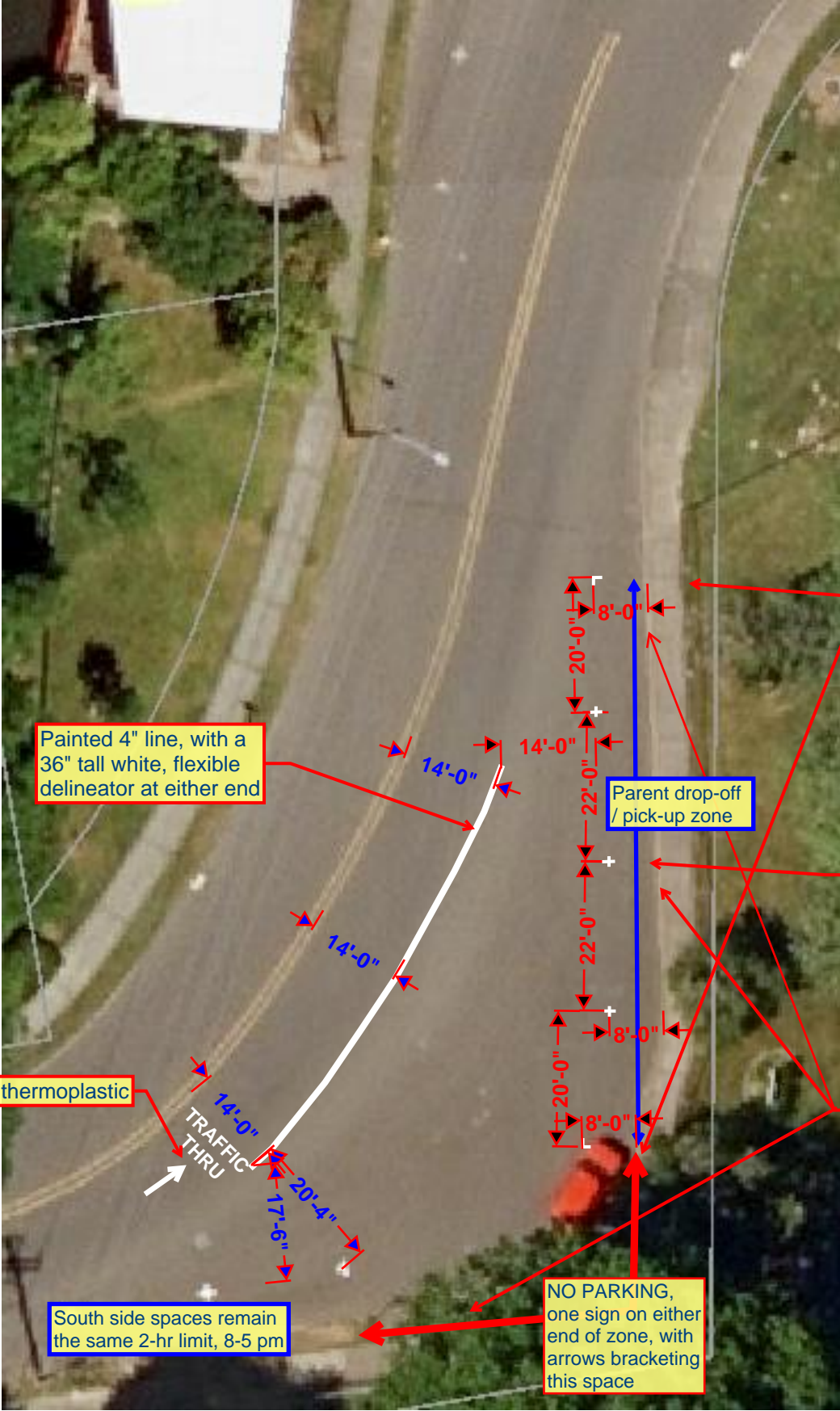
I hereby establish the following traffic regulation, a repeal of past parking related traffic regulations and establishing the attached map identifying parking restrictions, which will take effect as soon as appropriate signs or markings are posted in the areas affected.

Ann Ober, City Manager

This regulation has been recorded by the Office of the City Recorder (OCR).

- cc:  City of Milwaukie Engineering       City of Milwaukie Parking Enforcement  
 City of Milwaukie Police       City of Milwaukie Operations and Sign Shop  
 Clackamas County Fire Dept.

Permanent    Temporary   Expiration Date: \_\_\_\_\_  
Does this regulation replace or repeal a previous regulation?   If so, which TRG #s? \_\_\_\_\_



Painted 4" line, with a 36" tall white, flexible delineator at either end

thermoplastic

TRAFFIC THRU

South side spaces remain the same 2-hr limit, 8-5 pm

NO PARKING, one sign on either end of zone, with arrows bracketing this space

Parent drop-off / pick-up zone

New signage: Drop Off / Pick Up, and left and right arrows



new sign placed above the no parking signage

these four proposed parallel parking stalls may need to be shifted south to allow sufficient room from traffic to the northernmost stall

paint over or remove existing yellow thermoplastic on curbs