



# CITY OF MILWAUKIE

TRAFFIC REGULATION NO.: **510**

DATED: **6/1/2021**

As provided in the City of Milwaukie Municipal Code Chapter 10.08 Section 020, and having based my determination only upon:

- a. Traffic engineering principles and traffic investigations;
- b. Standards, limitation and rules promulgated by the State Highway Commission;
- c. Other recognized traffic control standards;
- d. Required needs.

---

### **General Description of Regulation:**

This regulation would designate "No Parking at any time" on a portion of SE Kuehn Road between SE Lake Road and the City of Milwaukie City Limits.

### **General Location:**

The east side of Kuehn Street from Lake Road to the City of Milwaukie City Limits at 12990 SE Kuehn Road.

### **Need for Traffic Regulation:**

Narrow road width precludes the use of on-street parking on both sides of Kuehn Road. Large vehicles and emergency vehicles will have difficulty traversing Kuehn Road if parking continues on both sides of the street. Posting the area as No Parking will provide the necessary notification that parking is not allowed within this portion of the roadway.

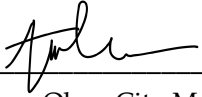
### **Description for New Traffic Control Measure(s):**

Install No Parking at any Time signs with appropriate arrows at the point of curvature (PC) at the following locations:

- SE corner of Kuehn Road and Lake Road
- NE corner of Kuehn Road and Barbara Lynn Way
- SE corner of Kuehn Road and Barbara Lynn Way
- NE corner of Kuehn Road and Pollard Place
- SE corner of Kuehn Road and Pollard Place
- SE corner of Kuehn Road and the City of Milwaukie City Limits

Steve Adams, City Engineer

I hereby establish the following traffic regulation, a repeal of past parking related traffic regulations and establishing the attached map identifying parking restrictions, which will take effect as soon as appropriate signs or markings are posted in the areas affected.



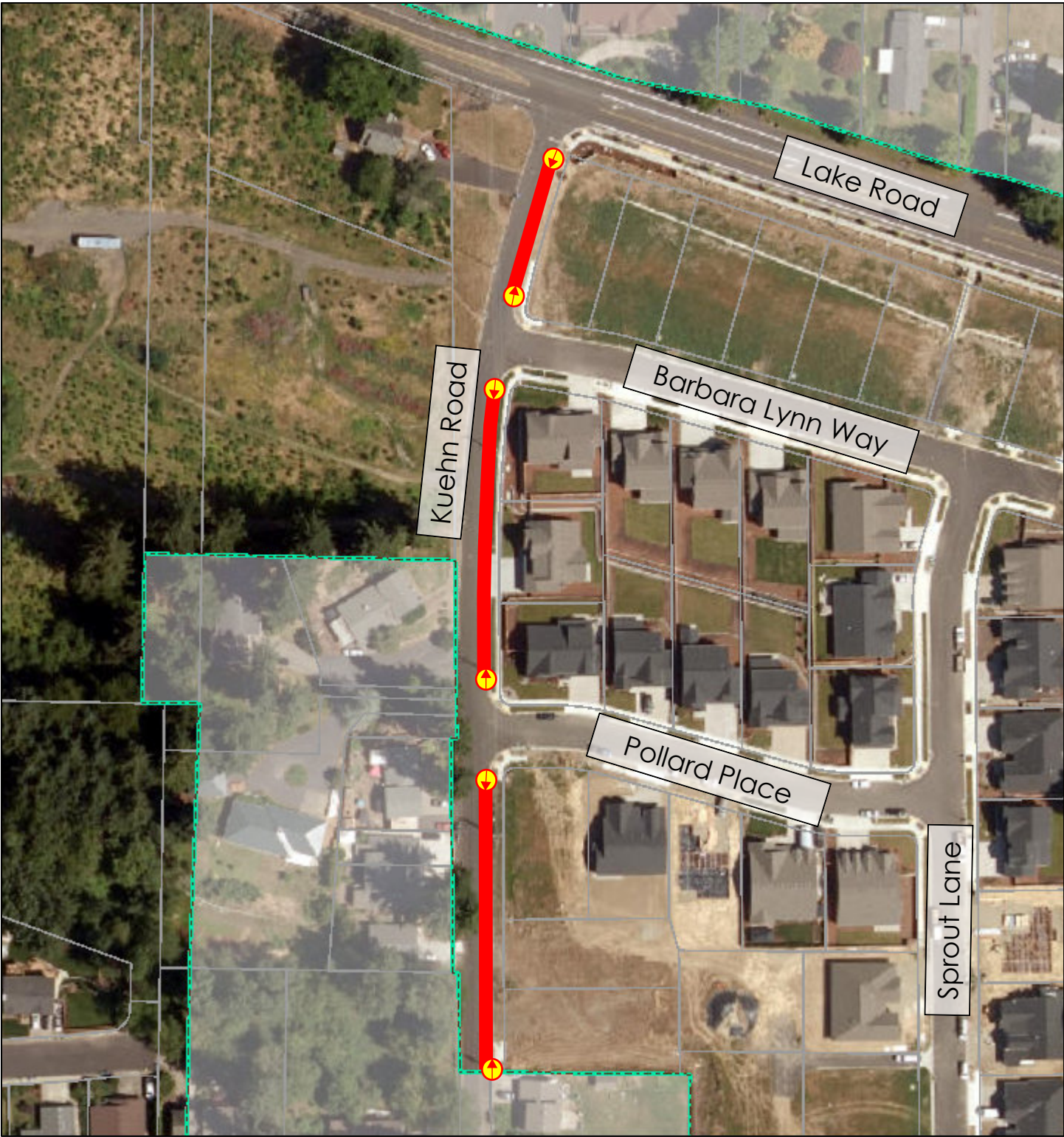
---

Ann Ober, City Manager

cc: City of Milwaukie Court  
City of Milwaukie Engineering  
City of Milwaukie Police

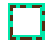



City of Milwaukie Parking Enforcement  
City of Milwaukie Operations and Sign Shop  
Clackamas County Fire Department

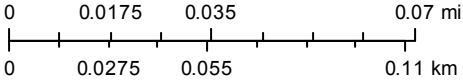
# City of Milwaukie



5/28/2021, 12:16:03 PM

1:2,100

-  Milwaukie City Limits
-  Taxlots
-  No Parking Area
-  Approx Sign Locations



Esri, HERE, Garmin, (c) OpenStreetMap contributors, and the GIS user community  
 City of Milwaukie Oregon  
 City of Milwaukie GIS  
 Data Resource Center/Metro

The information depicted on this map is for general reference only. This product is for informational purposes and may not have been prepared for, or suitable for legal, engineering, or surveying purposes. Users of this information should review or consult the primary data and information sources to ascertain the usability of the information. Contact the Milwaukie GIS for more information [\\_gis@milwaukieoregon.gov](mailto:_gis@milwaukieoregon.gov)