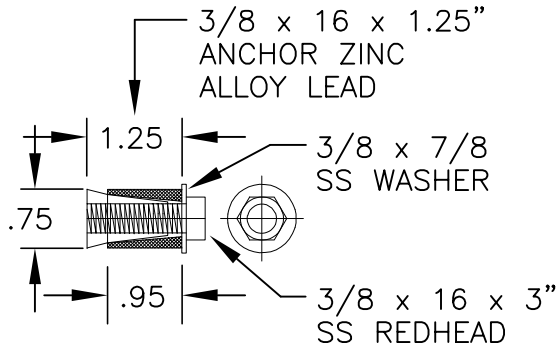
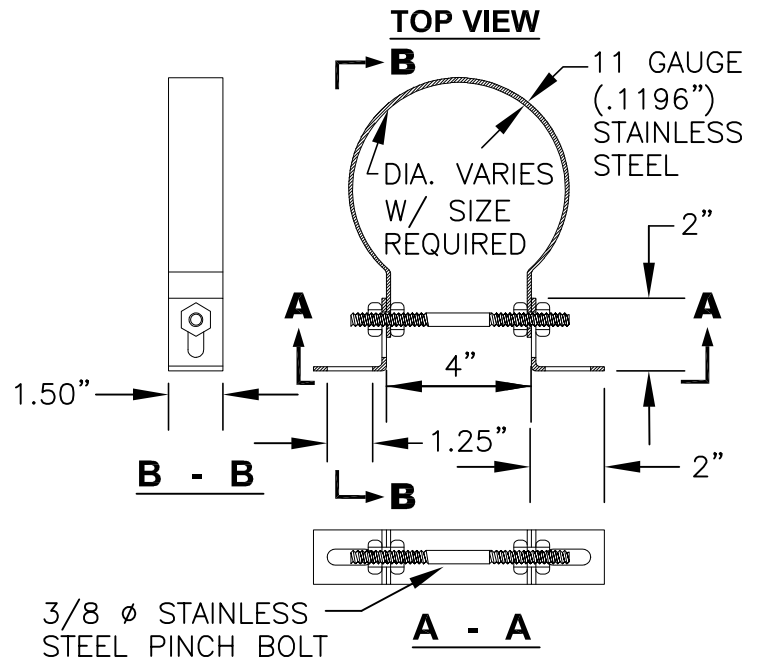


SPECIFICATIONS:

1. CLAMP AND BRACKETS ARE TYPE 304 STAINLESS STEEL, 11 GAUGE (.1196").
2. 3/8" ϕ PINCH BOLT AND NUTS IS TYPE 18-8 STAINLESS STEEL.
3. RELINER CLAMP/BRACKET AND ANCHOR OR APPROVED EQUAL.



ANCHOR DETAIL

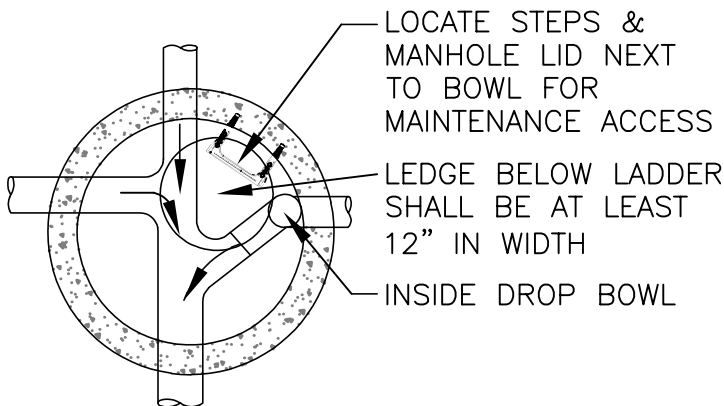
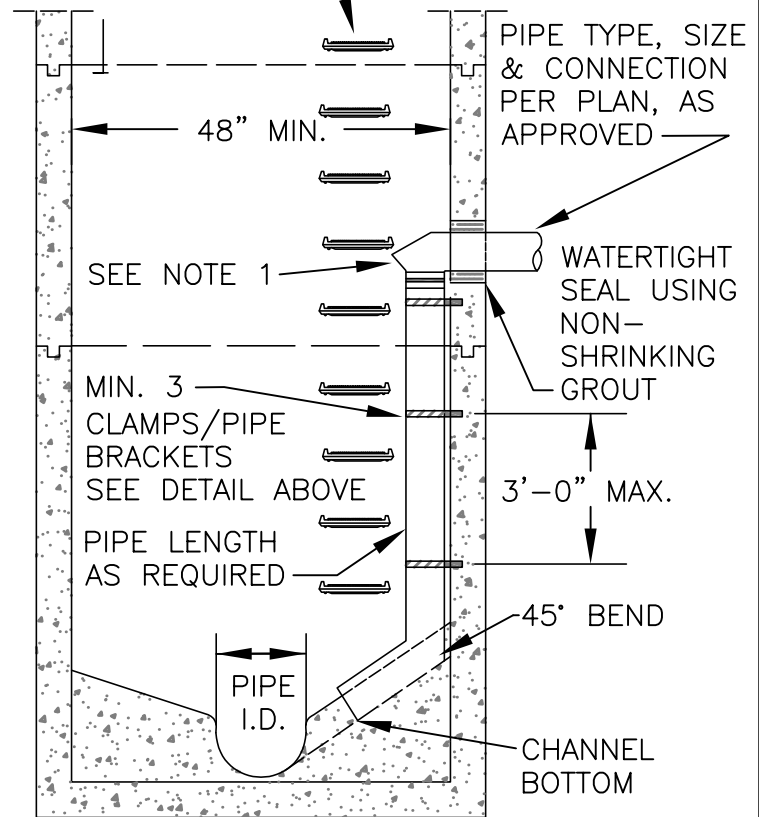


CLAMP/BRACKET DETAIL

NOTES:

1. DROP BOWL AS MANUFACTURED BY RELINER-DURAN INC. OR APPROVED EQUAL.
2. DROP BOWL TO BE SIZED PER MANUFACTURERS RECOMMENDATIONS (INFORMATION AVAILABLE @ RELINER.COM) OR AS REQUIRED BY CITY.
3. PIPE AND FITTING FOR DROP ASSEMBLY SHALL BE: AWWA C150-1, AWWA C-900 OR PVC ASTM 3034 SDR 35.
4. NO MORE THAN ONE DROP BOWL PER MANHOLE WITHOUT WRITTEN APPROVAL BY CITY.
5. WRITTEN APPROVAL BY CITY IS REQUIRED FOR DROP BOWL INSTALLATION ON PIPELINES WITH A SLOPE OF 5% OR GREATER.

MANHOLE STEP
SEE DRAWING 307



Public Works Standard Drawings

INSIDE DROP MANHOLE CONNECTION

SCALE NTS

DATE JAN '23 REV.

ENGR. DW DRAWN KAE

DRAWING NO. 303-A

