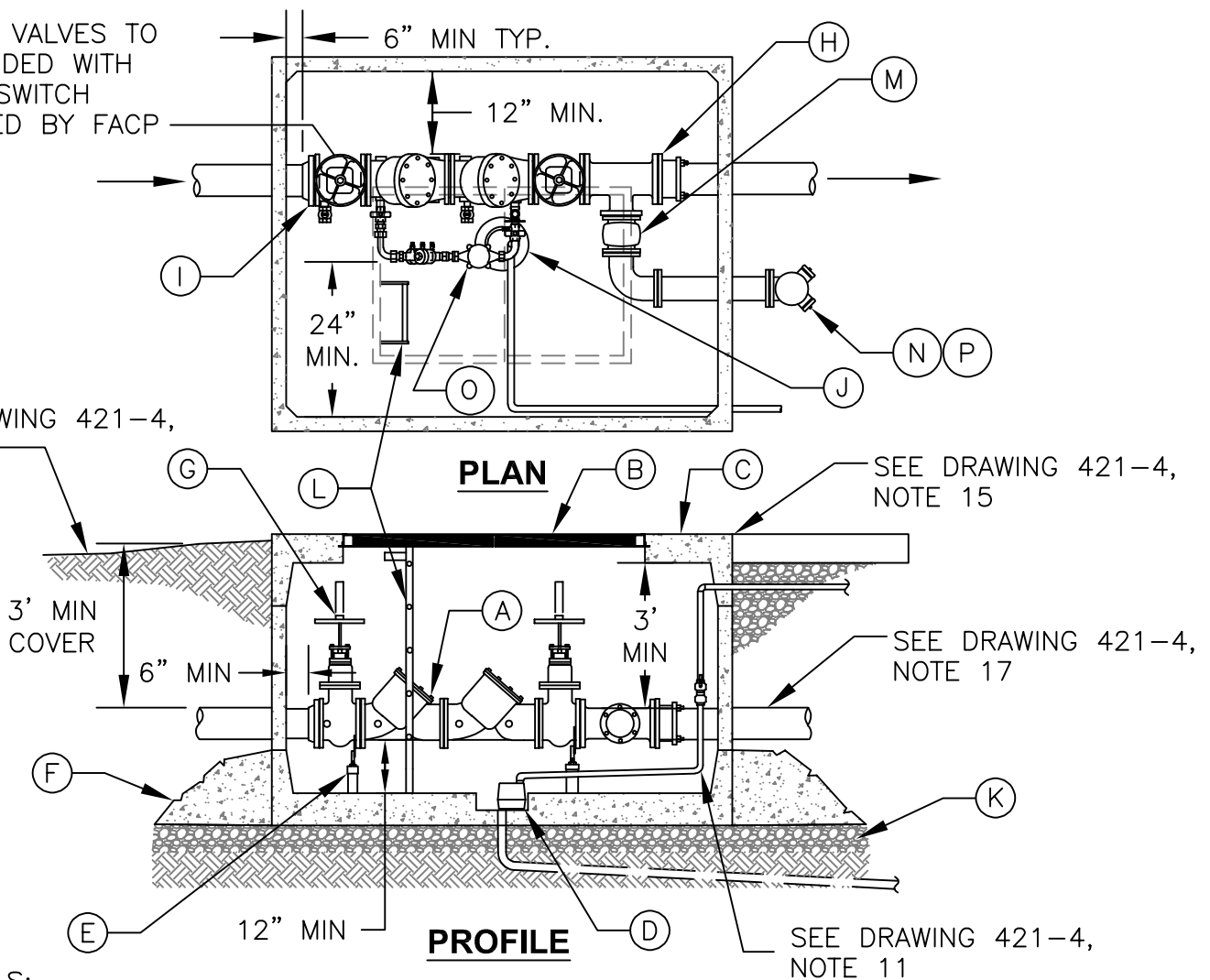


CONTROL VALVES TO
BE PROVIDED WITH
TAMPER SWITCH
MONITORED BY FACP

SEE DRAWING 421-4,
NOTE 16



MATERIALS:

- A. APPROVED DOUBLE CHECK DETECTOR ASSEMBLY (DCDA) PER STANDARDS
- B. ACCESS HATCH DOORS
- C. TYPICAL CONCRETE VAULT
- D. SUMP PUMP INCLUDING 1-1/2" PVC DISCHARGE PIPING WITH CHECK VALVE, OR 4" PVC GRAVITY DRAIN WITH BACKWATER VALVE TO STORM SEWER
- E. TYPICAL PIPE SUPPORTS PER DRAWING 421-4, NOTE 14
- F. TYPICAL CONCRETE BALLAST, SEE DRAWING 421-4, NOTE 12
- G. TYPICAL OS&Y GATE VALVES FOR DCDA, 3" MINIMUM CLEARANCE IN OPEN POSITION
- H. FLANGE COUPLING ADAPTER
- I. ADAPTER FLANGE
- J. 12" DIA SUMP WITH PUMP OR GRAVITY DRAIN
- K. 3/4"-0" GRANULAR MATERIAL - 6" MINIMUM
- L. OSHA-APPROVED LADDER, SEE DRAWING 420
- M. CHECK VALVE WITH BALL DRIP VALVE PER NFPA 13 AND NFPA 24 STANDARDS
- N. F.D.C. PER OREGON FIRE CODE, OREGON STRUCTURAL SPECIALTY CODE, NFPA 13, 13R, 14 & 24 STANDARDS. LOCATION AS APPROVED BY THE FIRE CODE OFFICIAL.
- O. DETECTOR METER, SEE DRAWING 421-4, NOTE 5
- P. F.D.C. SHALL BE PROVIDED WITH LOCKING FDC PLUGS.

NOTE:

REFER TO DRAWING 421-4 FOR NOTES AND ADDITIONAL REQUIREMENTS.



Public Works Standard Drawings

4" & LARGER DOUBLE CHECK
DETECTOR ASSEMBLY (SIDE)

| | |
|-------------------|-----------|
| SCALE | NTS |
| DATE JAN '23 | REV. |
| ENGR. DW | DRAWN KAE |
| DRAWING NO. 421-2 | |