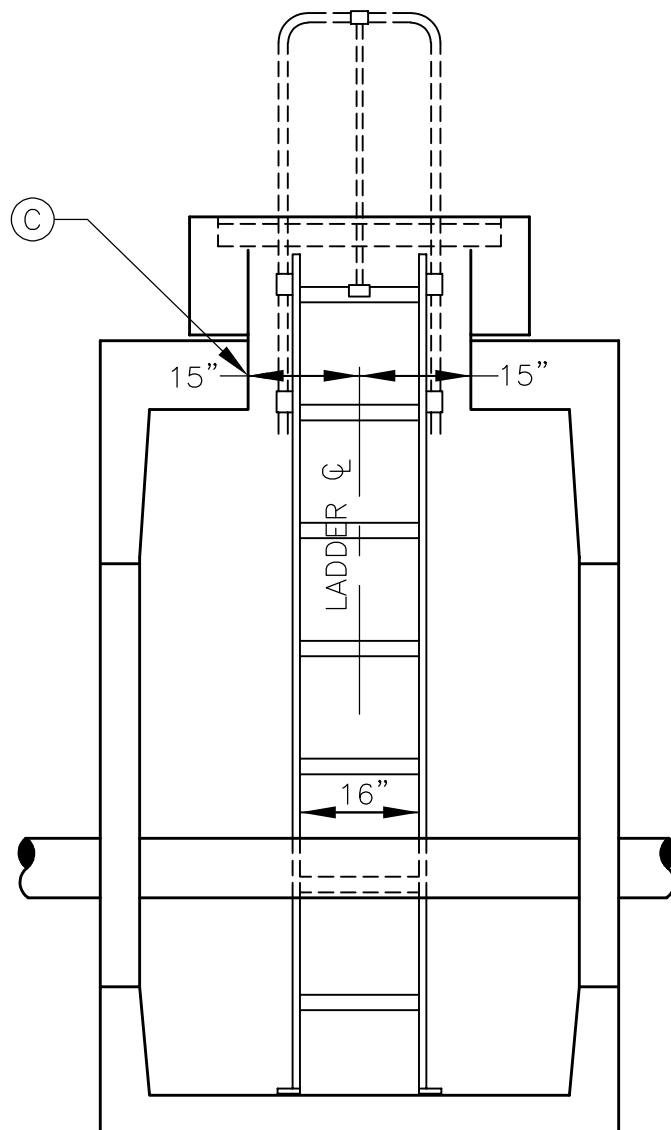


**SIDE VIEW**



**FRONT VIEW**

**MATERIALS:**

- A. LADDER EXTENSION SHALL BE ALUMINUM AND EXTEND 40" ABOVE THE TOP RUNG OF THE LADDER. EXTENSION SHALL BE BOLTED UP BEHIND LADDER RUNGS.
- B. ATTACH LADDER SUPPORT TO INSIDE FACE OF VAULT OPENING AND FLOOR OF VAULT WITH STAINLESS STEEL HARDWARE AS SHOWN.  $\varnothing$  OF RUNG MUST BE SET 7" FROM FACE OF SURFACE BEHIND RUNG.
- C. PROVIDE 15" MINIMUM LATERAL CLEARANCE ON EACH SIDE OF LADDER  $\varnothing$ .
- D. LADDER SHALL MEET THE REQUIREMENTS OF OSHA AND SHALL BE HOT-DIPPED GALVANIZED AFTER FABRICATION.



Public Works Standard Drawings

**WATER VAULT LADDER INSTALLATION**

SCALE NTS

DATE JAN '23 REV.

ENGR. DW DRAWN KAE

DRAWING NO. 420