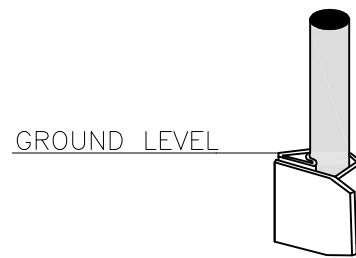
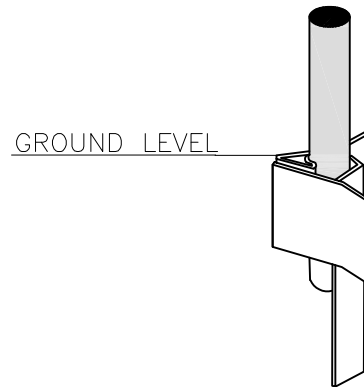


NOTE:
V-LOK WEDGE SHALL FACE DIRECTION OF TRAVEL.

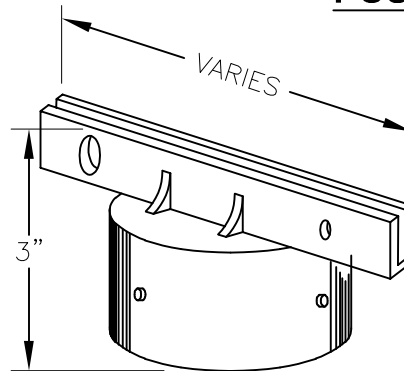


FOR CONCRETE INSTALLATION
USE V-LOK VR-1 (MODEL 23 ROUND)
OR APPROVED EQUAL



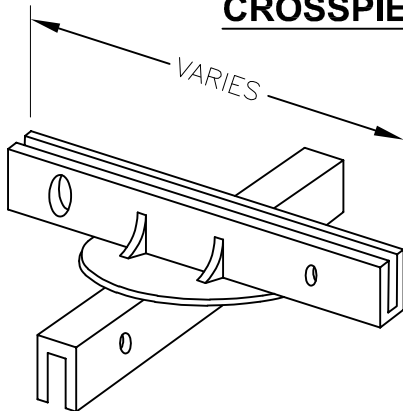
FOR EARTH OR
ASPHALT INSTALLATION
USE V-LOK VR-2
(MODEL 23 ROUND)
OR APPROVED EQUAL

POST CAP

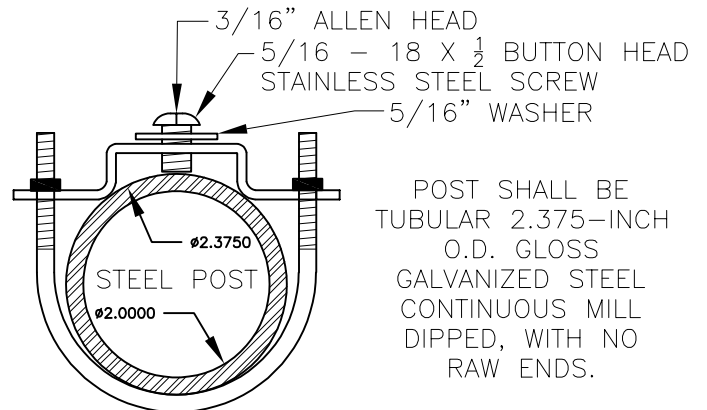


FOR STREET NAME
SIGNS WITH 4-INCH
LETTERING, USE
SUPR-LOK 922-X
OR APPROVED
EQUAL. FOR 6 INCH
LETTERING, USE
ULTRA SUPR-LOK
1238X OR
APPROVED EQUAL.

CROSSPIECE



FOR STREET NAME
SIGNS WITH 4-INCH
LETTERING, USE
SUPR-LOK 990-X
OR APPROVED
EQUAL. FOR 6 INCH
LETTERING, USE
ULTRA SUPR-LOK
12CRX OR
APPROVED EQUAL.



POST SHALL BE
TUBULAR 2.375-INCH
O.D. GLOSS
GALVANIZED STEEL
CONTINUOUS MILL
DIPPED, WITH NO
RAW ENDS.



Public Works Standard Drawings

TYPICAL SIGN ASSEMBLY
AND MOUNTING HARDWARE

SCALE NTS

DATE JAN '23 REV.

ENGR. DW DRAWN KAE

DRAWING NO. 523