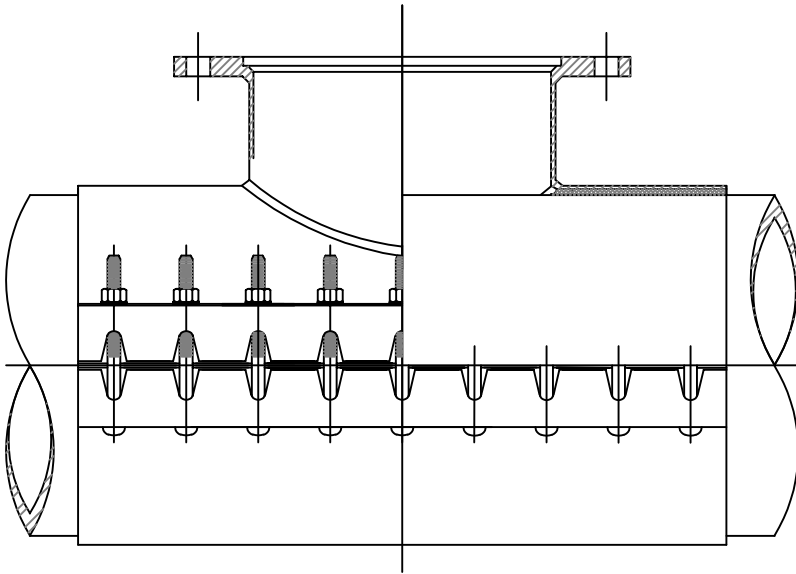
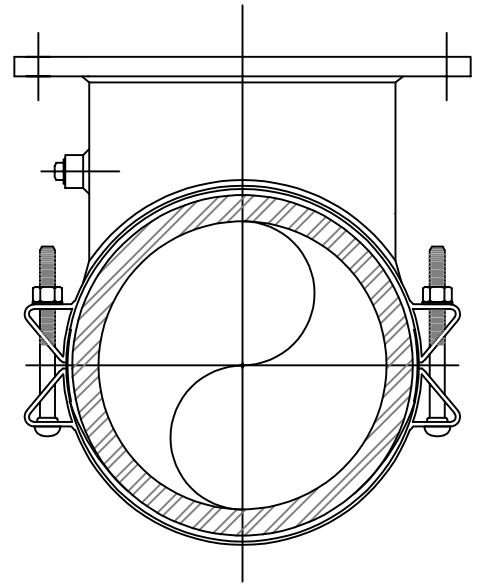


JCM 432 TAPPING SLEEVE
OR CITY APPROVED EQUAL



SECTION



END VIEW

NOTES:

1. WATER MAIN SHALL BE CLEANED BEFORE ATTACHING SLEEVE.
2. SLEEVE AND VALVE SHALL BE PRESSURE TESTED BEFORE MAKING TAP.
3. PRESSURE TEST AND TAP SHALL BE MADE IN THE PRESENCE OF OREGON CITY WATER DIVISION PERSONNEL.
4. PROPER TAPPING MACHINE SHALL BE USED TO MAKE TAP.
5. 3/4"-0" GRANULAR MATERIAL SHALL BE PLACED AND COMPACTED TO 95% OF MAX. DENSITY AS DETERMINED BY AASHTO T-180.
6. THRUST BLOCKING REQUIREMENTS SHALL BE PER DRAWING 407.
7. TAP SHALL BE MADE NO CLOSER THAN 18 INCHES FROM THE NEAREST MAINLINE JOINT OR SERVICE CONNECTION.
8. WHEN STATIC LINE PRESSURE OF EXISTING MAIN EXCEEDS 100 P.S.I. A HIGH PRESSURE SLEEVE, RATED AT 250 P.S.I., IS REQUIRED.
9. SIZE ON SIZE WET TAP OF CAST IRON WATER MAINS IS PROHIBITED.



Public Works Standard Drawings

STANDARD WET TAP DETAIL

SCALE NTS

DATE JAN '23 REV.

ENGR. DW DRAWN KAE

DRAWING NO. 411