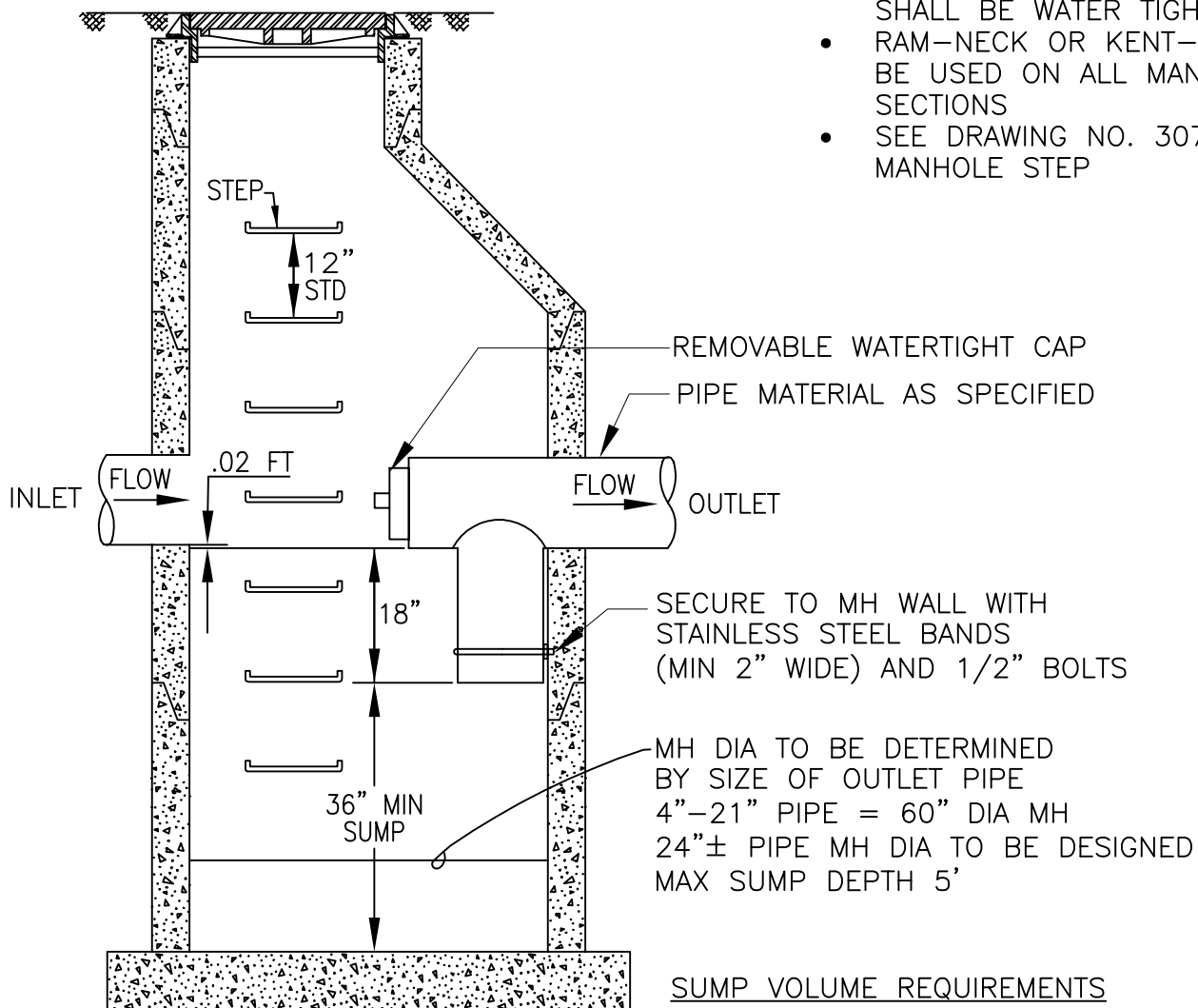


**PLAN**



**SECTION A-A**

NOTES:

- MANHOLE TO CONFORM WITH DRAWING NO. 301
- MANHOLE PIPE CONNECTIONS PER DRAWING 301
- MANHOLE FRAME AND COVER AS SPECIFIED SEE DRAWING 305
- ALL PIPES ENTERING OR EXITING SHALL BE WATER TIGHT
- RAM-NECK OR KENT- SEAL TO BE USED ON ALL MANHOLE SECTIONS
- SEE DRAWING NO. 307 MANHOLE STEP

SUMP VOLUME REQUIREMENTS

SINGLE FAMILY RESIDENTIAL	3.5 CF/ACRE
MULTI FAMILY RESIDENTIAL	22.0 CF/ACRE
COMMERCIAL/INDUSTRIAL	94.0 CF/ACRE



Public Works Standard Drawings

POLLUTION CONTROL MANHOLE

SCALE	NTS
DATE JAN '23	REV.
ENGR. DW	DRAWN KAE
DRAWING NO.	607