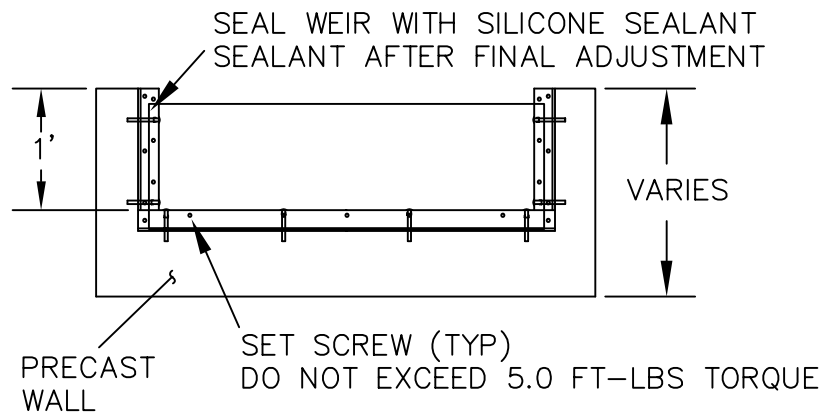


LOW FLOW OUTLET PIPE  
 – 10" MIN DIAMETER IF TO A  
 STORMWATER QUANTITY CONTROL  
 FACILITY  
 – 8" MIN DIAMETER IF TO A  
 STORMWATER QUALITY CONTROL  
 FACILITY

### **HIGH FLOW BYPASS PLAN VIEW**

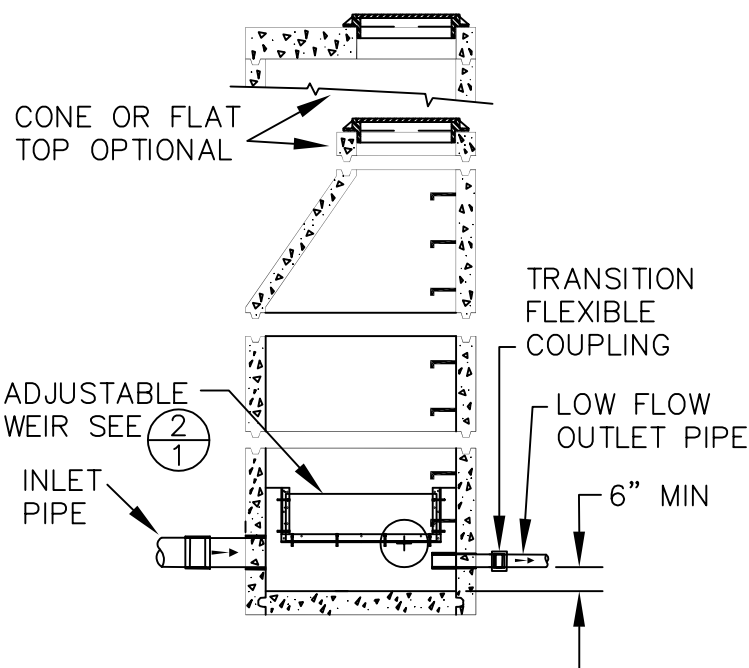


### **HIGH FLOW BYPASS WEIR DETAIL**

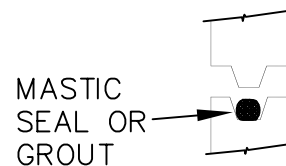
#### **TOP UNIT**

STANDARD CAST IRON FRAME  
 AND COVERS ARE AVAILABLE  
 IN A 3" SUBURBAN AND 7"  
 STANDARD.

FLAT TOP SLABS COME WITH  
 OPENINGS OFFSET TO ONE  
 SIDE OR CENTERED IN SLAB.  
 HS-20 LOADING CAPABLE.



### **HIGH FLOW BYPASS SECTION VIEW**



### **KEYLOCK JOINT**

#### **NOTE:.**

1. MANHOLE MATERIAL AND  
 INSTALLATION PER DRAWING 301.



Public Works Standard Drawings

HIGH FLOW BYPASS MANHOLE

SCALE NTS

DATE JAN '23 REV.

ENGR. DW DRAWN KAE

DRAWING NO. 602-1