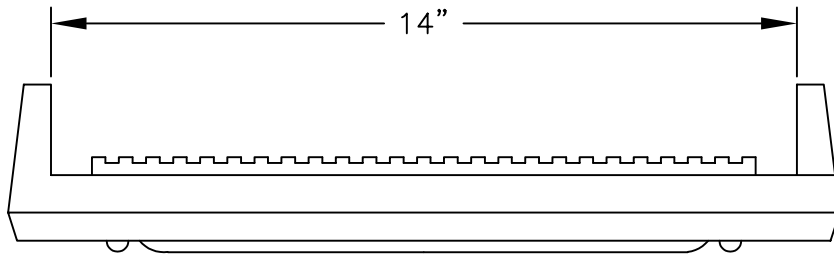
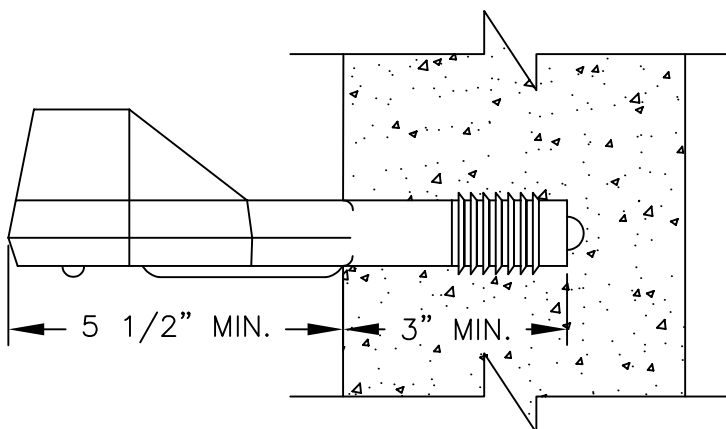


TOP



FRONT



SIDE

NOTES:

1. STEPS SHALL BE DEFORMED STEEL REINFORCED POLYPROPYLENE PLASTIC, CONFORMING WITH ASTM C478 AND ASTM A615.
2. ALL STEPS WITHIN A MANHOLE SHALL BE OF THE SAME DESIGN TYPE AND SIZE. (MIXING OF UNMATCHED STEPS WITHIN THE SAME MANHOLE IS NOT PERMITTED.)
3. LOOSE STEPS SHALL BE CAUSE FOR REJECTION OF THAT MANHOLE CONE OR SECTION.
4. STEPS ARE TO BE DRIVEN INTO PRE-FORMED HOLES IN PRECAST CONCRETE MANHOLE CONE AND SECTIONS BY THE MANHOLE MANUFACTURER PRIOR TO DELIVERY TO THE JOB SITE.
5. MINIMUM HORIZONTAL PULLOUT LOAD SHALL BE 1500 LBS.
6. STEPS SHALL BE ALIGNED VERTICALLY.
7. STEPS SHALL BE SPACED 12" O.C.



Public Works Standard Drawings

**MANHOLE STEP -
STORM & SANITARY SEWER**

SCALE	NTS
DATE JAN '23	REV.
ENGR. DW	DRAWN KAE
DRAWING NO.	307