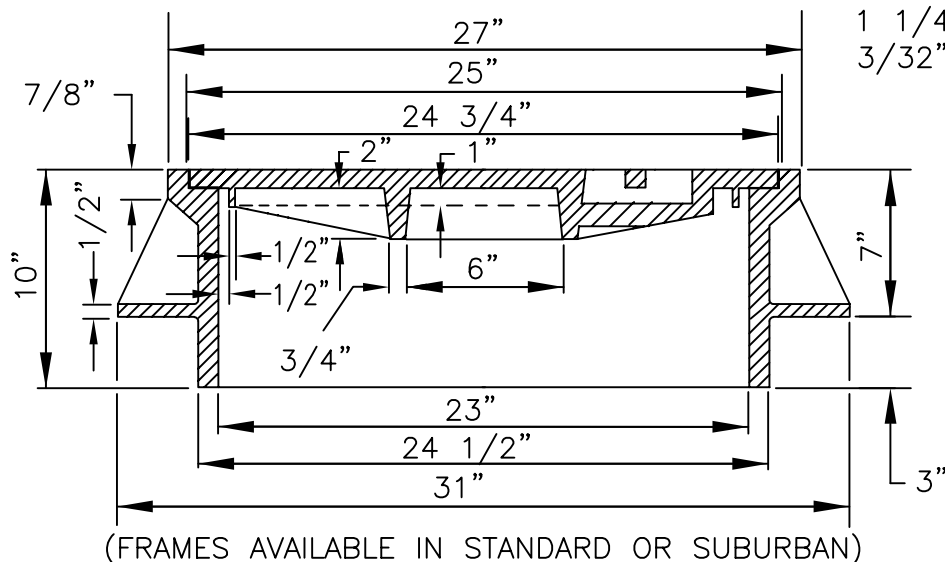
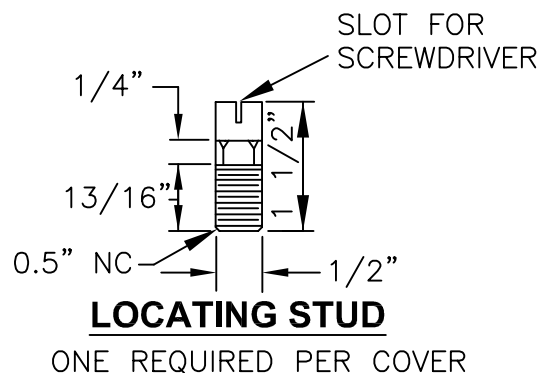
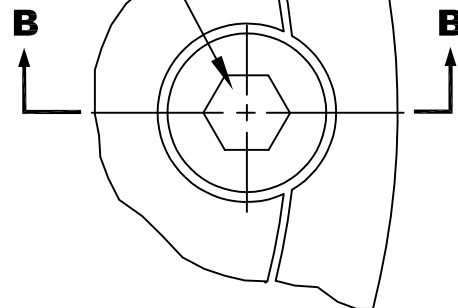
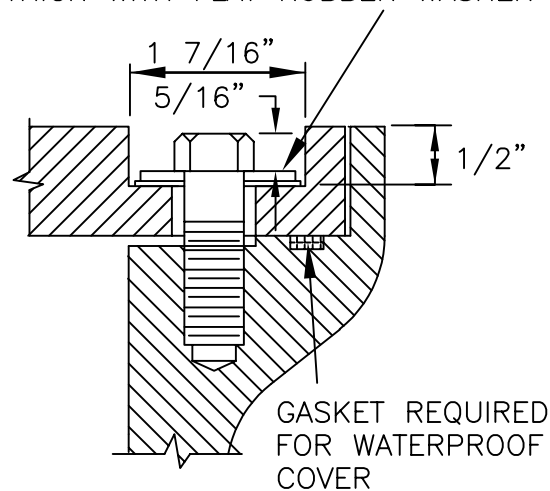


1/2" - 13NCx1"  
STAINLESS STEEL  
HEXAGON HEAD  
CAP SCREW



1 1/4" OD STAINLESS STEEL WASHER  
3/32" THICK WITH FLAT RUBBER WASHER



### SECTION A-A

### SECTION B-B

#### NOTES:

1. TAMPERPROOF COVERS REQUIRED ON SANITARY OR STORM MANHOLES LOCATED IN UNIMPROVED EASEMENTS AND RIGHT OF WAYS.
2. WATER TIGHT COVERS REQUIRED IF LOCATED WHERE COVER MAY BE SUBMERGED.
3. COVER AND FRAME TO BE MACHINED TO A TRUE BEARING ALL AROUND.
4. MATERIAL SHALL BE OF GREY IRON A.S.T.M. A-48 CLASS 30.



Public Works Standard Drawings

**WATERPROOF & TAMPERPROOF  
MANHOLE FRAME & COVER**

SCALE NTS

DATE JAN '23 REV.

ENGR. DW DRAWN KAE

DRAWING NO. 306