

FINISHED GRADE

SEE DRAWINGS 305 & 306

NON-SHRINK GROUT,  
MASCO FLASH OR  
APPROVED EQUAL

GRADE RINGS,  
MAX. 3 LAYERS,  
12" MAX, 2" MIN.

FOR NEW MANHOLES,  
USE KOR-N-SEAL  
BOOTS (OR EQUAL).

FLEXIBLE JOINT  
REQUIRED ON ALL  
MANHOLES, NO GREATER  
THAN 18" FROM  
EXTERIOR MANHOLE  
WALL.

PLASTIC MANHOLE  
STEPS WITH  
REINFORCING STEEL

CONNECTIONS TO  
EXISTING MANHOLES  
SHALL USE SANDED  
PVC COLLAR WITH  
GASKETED JOINT

NON-SHRINK  
GROUT AROUND  
PIPE

48" DIA.

MIN. PIPE  
OD

18"  
MAX.  
TYP.

12"  
MAX.

6"  
MIN.

PIPE OD  
VARIES

FLOW

BASE  
HEIGHT  
VARIES

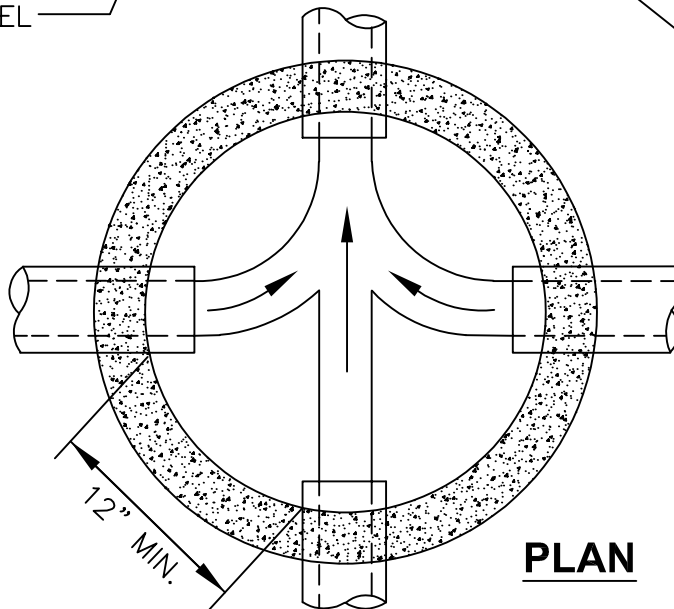
12" - 3/4"-0  
COMPACTED ROCK  
COMPACTION TO BE  
95% & MEET T-180  
REQUIREMENTS

FORM CHANNEL HEIGHT  
TO 3/4 PIPE OD

CONSTRUCT CHANNEL  
& SHELF IN FIELD

MANHOLE SECTIONS  
AND REINFORCEMENT  
TO BE CONSTRUCTED  
IN ACCORDANCE  
WITH THE MOST  
CURRENT EDITION OF  
OREGON STANDARD  
SPECIFICATIONS FOR  
CONSTRUCTION, OR  
APPROVED EQUAL.

**NOTE:**  
ALL CONCRETE  
TO BE MINIMUM  
4000 PSI  
COMPRESSIVE  
STRENGTH



**PLAN**

Public Works Standard Drawings

**MANHOLE -  
STORM & SANITARY SEWER**

SCALE NTS

DATE JAN '24 REV. 1

ENGR. DW DRAWN KAE

DRAWING NO. 301

