



VOL 26 | ISS 2 | March 2016

# THE MILWAUKIE PILOT

2 Councilor Batey: Residents Can Help Build Momentum

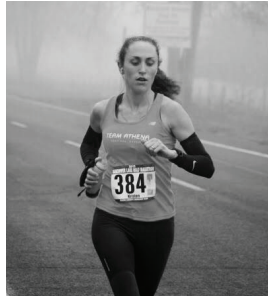
4 Riverfront Park Bridge Update

FOLLOW THE CITY!



## MILWAUKIE'S LOCAL LEADERS

### Dogwood Dash Showcases the City



It was just five years ago when Kristen Woldrich (pictured left) became inspired to start running. She decided to volunteer for Hood to Coast, working in one of the support vans for Team Athena, a running organization whose goal

is to empower woman runners. After seeing them in action, she embarked on her own running journey and became involved in regional races. Quickly realizing that Milwaukie didn't have any competitive races of its own, Kristen and her husband, also an avid runner, created the Dogwood Dash, a 5K competitive race and 1K fun run for kids.

"This is an important event because it not only provides a venue for runners, it gives kids a chance to see competitive racing in action and, hopefully, be inspired to start running themselves," Kristen said. "This event is also a chance to showcase what the city has to offer—from local businesses and restaurants, to walking and running trails."

The Dogwood Dash is Saturday, April 2. The course starts and ends at Milwaukie City Hall with the free 1K fun run for kids beginning at 9 a.m. and the competitive 5K beginning at 9:15 a.m. The 5K has a \$25 race fee with cash prizes for the first male and female winners. Following the races, the event will feature food, drinks and family-friendly entertainment in the parking lot across from city hall. Activities conclude at 11 a.m.

The race is chip timed and results will be available at the finish. To register, visit <https://runsignup.com/Race/OR/Milwaukie/DogwoodDashOR>. Registration ends March 31 at 6 p.m.

When discussing the future of the race, Kristen said, "I'd obviously love to see this event grow in the future, but, more importantly, I want this event to show how wonderful Milwaukie really is."

For more information, visit [www.milwaukieoregon.gov/citymanager/dogwood-dash-5k-1k](http://www.milwaukieoregon.gov/citymanager/dogwood-dash-5k-1k) or email [dogwooddashOR@gmail.com](mailto:dogwooddashOR@gmail.com).

### Get the Facts: Ledding Library Bond



Built in 1965, Ledding Library has been in use for more than 50 years. On Feb. 16, City Council voted unanimously to refer a bond measure to voters for the May 2016 election for improvements, repairs, and updates to the Ledding Library. The measure would authorize the city to issue up to \$9.2 million to pay for improvements to the library and the Pond House. If the bond measure passes, the improvements would include:

- More space for high-use children and teen learning programs.
- The installation of shorter shelving and wider aisles, as well as more audio books and large print materials, to meet the demand from the city's growing population of senior citizens.
- Removal of existing outdated restrooms, and the installation of modern toilets and restroom facilities.
- Safety improvements, such as the installation of security cameras in the parking lot and building exterior.
- Modern electrical wiring, expanded wireless capabilities and additional outlets for laptop users.
- Additional computers and printers to reduce lines and demand for the library's limited technology.
- Replacement of current inefficient heating and cooling systems with new, energy-efficient systems.
- Improving safety with the installation of structural components to meet current earthquake standards.
- Creation of built-in accountability mechanisms, such as annual audits and citizen oversight committee.

This measure is estimated to result in a tax of \$0.35 per \$1,000 of assessed value per year. For a home with an assessed value (not market value) of \$175,000, this would amount to a little more than \$5 a month.

The Ledding Library is located at 10660 SE 21st Avenue. For more information, visit [www.milwaukieoregon.gov/library](http://www.milwaukieoregon.gov/library) or call 503-786-7580.

## Residents Can Help Build Momentum



Councilor Lisa Batey

The summers are always busy in Milwaukie, between First Fridays, the Farmers Market, neighborhood concert series and other events. That will ramp up again two months from now when the Market and First Friday seasons begin in May.

Usually, the winter months, in contrast, are relatively quiet—but not this year. The Council and staff have been working hard on the goals we established last year, and made great progress on two in February. First, the Council voted unanimously to ask Milwaukie voters to support the issuance of \$9.2 million in bonds to fund modernization and expansion of the Ledding Library.

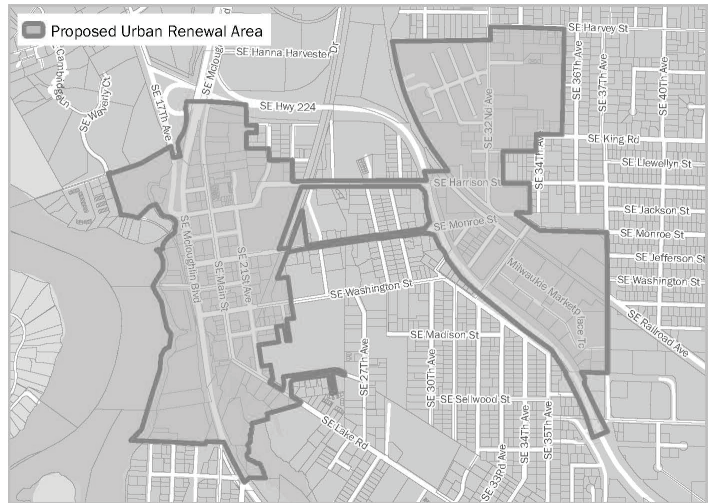
The working group to study urban renewal, which I am honored to chair, also began work in February, with a goal of putting a recommendation before the Council this summer. Meanwhile, the Public Safety Advisory Committee has been working on transportation infrastructure recommendations.

It's been rewarding to be part of moving these projects forward, and I truly appreciate all the residents who are taking part in these and other projects. Citizens can also help to move forward projects beyond the capacity of our staffing levels, from planning for the Sunday Parkways event to promoting solar energy, a plastic bag ban, or development of skate parks.

It's the energy and commitment of Milwaukie residents that will make this an even greater community than it already is.

*This month's City Council Column is written by Councilor Lisa Batey. To contact Councilor Batey, call 503-786-7512 or email [bateyl@milwaukieoregon.gov](mailto:bateyl@milwaukieoregon.gov).*

## City Begins Preparing Urban Renewal Plan



City Council has directed the preparation and public review of an urban renewal plan for downtown and central Milwaukie. The urban renewal plan will eventually be voted on by the Milwaukie City Council, tentatively scheduled for late summer 2016.

Urban renewal is an economic development tool that allows cities to borrow against future tax revenues in a designated area to create funds for street or façade improvements, pedestrian amenities, and loans or grants to make development more feasible in difficult locations.

Urban renewal uses tax increment financing to fund projects. This means that the existing tax base for the urban renewal area is frozen for the current uses during the designated period (usually between 20-25 years). Then, as new private development projects are completed, the tax base is increased and the additional tax revenues pay off the debt used to finance any public improvements, such as plazas, pedestrian walkability enhancements or parking facilities. At the end of the urban renewal time period, ALL of the tax revenue can then be used as normal.

An advisory group has been appointed to assist in the urban renewal plan preparation. The first meeting was held in February, and additional meetings are scheduled for March 30, April 20 and May 18. These meetings are open to the public,

and there will be additional opportunities for public input at city-hosted booths during community events in the next few months, including the Dogwood Dash on April 2, an open house on April 20, the Milwaukie Earth Day event on April 23, Farmers' Markets and First Fridays.

For more information on the preparation of the urban renewal plan, financing, and opportunities for public input, please visit [www.milwaukieoregon.gov/economicdevelopment/urban-renewal](http://www.milwaukieoregon.gov/economicdevelopment/urban-renewal), or contact Denny Egner at [egnerd@milwaukieoregon.gov](mailto:egnerd@milwaukieoregon.gov) or 503-786-7654.

# Connecting With the MAX Orange Line



*The MAX Orange Line at the Milwaukie Main Street Station. The Orange Line opened in September 2015, and connects the city with SE Portland, Portland State University and the Portland city center.*

The MAX Orange Line's two Park & Ride locations have proven to be very popular, filling quickly on weekday mornings. TriMet and the City of Milwaukie are thrilled to see them being used, but understand that missing out on a spot can be frustrating.

So why didn't TriMet offer more parking? TriMet tried and, in the beginning of the project, planned for larger garages on the Orange Line. Unfortunately, funding cuts meant difficult decisions had to be made, which included limiting the size of the Park & Rides. However, there are still great options for getting to the MAX, thanks to the excellent bike, trail and bus network connecting with the Orange Line:

## By Bike or Bus

The Bike & Rides at the Tacoma and Park Avenue stations offer plenty of secure and enclosed parking. Or, try the bus—many lines serve Orange Line stations directly or through a nearby stop.

## Alternate Park & Ride

From the Milwaukie Park & Ride, Line 34 connects to MAX and, during commute hours, Line 99 goes right into Downtown Portland.

## Parking in the Neighborhood

If you decide to park on a residential street, respect private property and don't park in nearby lots. There are ordinances that apply and, just as importantly, neighbors' feelings to consider.

Thanks for riding, however you choose to get there! For more information, visit [www.catchtheorange.com](http://www.catchtheorange.com).

# Click It or Ticket It



To encourage the use of seatbelts while riding in a motor vehicle, the Milwaukie Police Department (MPD) is participating in the Oregon Department of Transportation's (ODOT) 2016 "Click it or Ticket," an enhanced enforcement program. Along with other law enforcement agencies in the area, the MPD will conduct enhanced enforcement from May 23 through June 6, and Aug. 22 through Sep. 4. Additional dates will be identified later in the year. Since Oregon passed the adult seatbelt law in 1990, statewide crash fatality and injury rates have dropped by 62 percent and 32 percent, respectively. The law, combined with active enforcement, has resulted in a compliance rate of 96 percent for 2015, placing Oregon among the top seatbelt-use states in the U.S. (the average nationally in 2014 was 87 percent). Regardless of enhanced patrol periods, please buckle up and drive safe year round!

For more information, please visit [www.oregon.gov/ODOT/TS/Pages/safetybelts.aspx](http://www.oregon.gov/ODOT/TS/Pages/safetybelts.aspx).

To view a short video related to seatbelt safety, including proper child safety restraint use produced by ODOT, visit [www.oregon.gov/ODOT/TS/PublishingImages/safetybelts/swf/index.html](http://www.oregon.gov/ODOT/TS/PublishingImages/safetybelts/swf/index.html).

# Window Safety Tips



CLACKAMAS FIRE DISTRICT #1

As spring approaches and households are opening their windows to let in fresh air, please take these helpful safety precautions to prevent children from falling out the window:

- Only allow windows to open four inches. Install a window stop to keep children from opening them further. Be sure an adult can open the window in an emergency.
- If you open windows wider than four inches, install window guards with an emergency release device.
- Windows also serve as a secondary means of escape during an emergency. Make sure windows are still accessible and can open fully without special knowledge or tools.
- Screens are to keep bugs out, not kids in.
- Keep windows locked and closed when not in use.
- Keep furniture—or anything children can use to climb—away from windows.
- Teach children to play a safe distance from windows.

For more information, please visit [www.clackamasfire.com](http://www.clackamasfire.com).

# Tree City USA



The Parks and Recreation Board has been working diligently for years to achieve “Tree City USA” status for Milwaukie. The Tree City USA program has been greening up cities and towns across America since 1976. It is a nationwide movement that celebrates the importance of an urban tree canopy and improved care of vital city trees in public areas. To qualify as a Tree City USA community, Milwaukie must meet four standards established by the Arbor Day Foundation and the National Association of State Foresters:

- **Adoption of a Tree Care Ordinance.** City Council reviewed the draft ordinance on Feb. 16, and the first public hearing for consideration of adoption is scheduled for March 15.
- **Establishment of a Tree Board or Department.** The draft ordinance up for adoption on March 15 establishes a Tree Board.
- **Community Forestry Program with an annual budget of at least \$2 per capita.** The city already satisfies this requirement!
- **An Arbor Day Observance and Proclamation.** The first Arbor Day event will be held at noon on **Saturday, April 23.**

To learn more about the ordinance, Tree Board, or how to participate and volunteer at the Arbor Day event, contact Mitch Nieman at 503-786-7573 or niemanm@milwaukieoregon.gov.

## City Code Corner

It's evident today that more people are turning to other forms of living arrangements to avoid high rental costs or even homelessness. During a recent investigation by Tim Salyers, the city's code compliance coordinator, an individual told him he was planning on squatting, which is taking up residence without the right to be there, after being questioned about their connection with the property. The city has also seen a rise in people living in the sheds or garages of homes controlled by the property owner or a renter looking for extra cash.

Keeping these issues in mind, it is important for neighbors to keep an eye on foreclosures and vacant homes. **If you see someone at these types of homes and it doesn't look right, please call Tim Salyers at 503-786-7409.**

The city's code compliance division is responsible for neighborhood preservation and nuisance reduction, as well as code compliance. For more information visit [www.milwaukieoregon.gov/communityservices/code-compliance](http://www.milwaukieoregon.gov/communityservices/code-compliance).

# Riverfront Park Bridge Repairs Underway



Last month, City Council accepted the city engineer's recommendation of constructing a series of repairs, carried out in four phases, to replace the bridge over Kellog Creek to Riverfront Park.

The first phase involves installing temporary rock armor (commonly known as rip rap) to secure the bridge's footings, abutments and wing walls to stabilize the bridge with the hope of opening in spring 2016. After the completion of this phase, sport fisherman will have access to the dock for springer season.

The second phase involves reconstructing the park exit at Washington Street and McLoughlin Boulevard to build a temporary entrance/exit to accommodate two-way traffic. This phase will allow vehicles (and vehicles towing boats) to enter and exit the park from McLoughlin Boulevard, while construction of the replacement bridge can begin. This phase is expected to be completed by the end of July 2016.

The third phase consists of replacing the bridge and is expected to be completed by the end of December 2017. During the final phase, the temporary entrance/exit on McLoughlin Boulevard will be restored back to its original plan and ODOT permit as an exit only. This phase is expected to be completed by the end of March 2018.

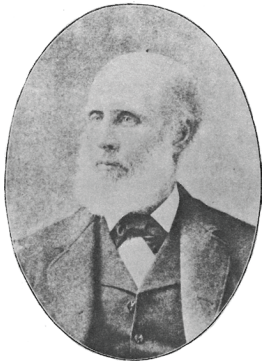
For more information, visit [www.milwaukieoregon.gov/communitydevelopment/milwaukie-riverfront-park-0](http://www.milwaukieoregon.gov/communitydevelopment/milwaukie-riverfront-park-0).

## Community Gardens



Would you like to grow your own vegetables? Milwaukie has plots available in both the Linwood and Campbell Community Gardens. To register for a plot, call 503-358-3421 or visit [www.milwaukiecommunitygardens.com](http://www.milwaukiecommunitygardens.com).

# Seth Lewelling: Bing Cherry Creator



*Seth Lewelling*

Seth Lewelling arrived in Milwaukie in 1850 with his wife, Clarissa, two daughters and one son. He bought a house on McLoughlin Boulevard from Elisha Kellogg, as well as property north of Jefferson Street to establish an orchard and plant nursery. Lewelling was a horticulturist, who developed many varieties of apple, cherry, plum, berries, nuts and more.

In the mid 1870's, he developed the Bing Cherry and named it after his faithful Manchurian nursery foreman, who tended the row of trees where the Bing Cherry first grew.

Bing was close to six feet tall and worked in Milwaukie for close to thirty years. He had a wife and children in China, to whom he regularly sent money. Around 1880, Bing went back to China to see his family, however, while there, the United States passed the Chinese Exclusion Act and he was never allowed to return to Oregon.

The original Bing Cherry Tree stood on Main Street in front of what is now the Masonic Temple. In 1912, Main Street was widened and the tree was cut down.

Lewelling didn't just develop the Bing Cherry. He also created the Black Republican Cherry, Lewelling Cherry, German Prune orchard, Sweet Alice Apple, Golden Prune, and Lewelling Almond. He won awards for his fruit exhibits at the California State Fair in 1859 and at the Centennial Exhibition in Philadelphia in 1876. He died in Milwaukie on Feb. 20, 1896.

To learn more about Milwaukie's Founding Fathers and Milwaukie's horticultural significance in the west, please visit the Milwaukie History Museum (3737 SE Adams Street) on Saturdays from 1-5 p.m., come to Historical Society Meetings at 3:30 p.m. on the second Tuesday of each month, find the Milwaukie History Museum on Facebook, or visit [www.milwaukiehistoricalsociety.com](http://www.milwaukiehistoricalsociety.com). Admission to the Milwaukie History Museum is free.

*This month's Milwaukie history article is written by Greg Hemer from the Milwaukie Historical Society. For more information, email [milwaukiemuseum@gmail.com](mailto:milwaukiemuseum@gmail.com).*

# Spend Spring Break at the Ledding Library

All programs are FREE and held in the children's library at the Ledding Library (10660 SE 21 Avenue).

## Composting with Worms

**Friday, March 18 at 2 p.m.**

Learn how to set up your own worm composting bin at hom. Includes hands-on time with real worms! Ages 5 and older.

## Service Puppies in Training

**Tuesday, March 22 at 2 p.m.**

How do puppies ever become service dogs? Volunteers from Canine Companions for Independence answer that question with real puppies in training. Ages 5 and older.

## Dragon Theater Puppets presents: "The Reluctant Dragon"

**Thursday, March 24 at 2 p.m.**

A Spring Break puppet show for all ages, sponsored by the Friends of Ledding Library.



## Minecraft Buddies

**Thursday, March 24 from 6:30-8 p.m.**

Meet new Minecraft friends, share tips & techniques. For Minecraft fans of all ages.

## Every Kid in a Park!

**Friday, March 25 at 2 p.m.**

Calling all nature enthusiasts families, fourth-graders and kids at heart! Learn about the federal program Every Kid in a Park for fourth graders, as well as how to plan your next camping adventure.



Discover how our state mammal is well-suited to its wet home and make your own beaver puppet. Presented by Tryon Creek Park Ranger Deborah Hill. Ages 5 and older.

To learn more about these and other programs at the Ledding Library, please visit [www.milwaukieoregon.gov/library](http://www.milwaukieoregon.gov/library) or call 503-786-7580.

## HISTORIC MILWAUKIE

### NEXT MEETING:

MON, MARCH 14 @ 6:30 PM \* LIBBIE'S RESTAURANT

A 16th century adage refers to March arriving like a lion and ending as a lamb. Most considered this an occasionally accurate prediction of the weather, but some attribute its origin to astrology. Regardless, the next meeting will definitely be something to roar about. The neighborhood will have a demonstration and tutorial of hands only CPR, and sink its claws into the issue of hunger at Rowe Middle School. There is nothing sheepish about the Milwaukie Public Safety Foundation, who will inform us about their upcoming events. Historic Milwaukie's newest neighbor, the Jesuit Volunteers, will let us know about their pride, and there will be an opportunity to provide comments about urban renewal. A map of the proposed boundary will be on display.

During February's meeting, the neighborhood decided Libbie's Restaurant will be its new meeting location. Come early and order! February's meeting also featured presentations from Clackamas County Water and Environmental Services about the need for expanded treatment capacity. The Library Expansion Task Force also spoke with us about the Ledding Library's growing pains, as well as a potential bond measure. NHA revealed their designs for the residential portion of their redevelopment.

These are all import issues that will have ramifications on your future and the neighborhood will continue to have more information at future meetings regardless of the weather or the alignment of the constellations.

## MILWAUKIE BUSINESS SPOTLIGHT

Owner Ryan Garvey and his business associate, Marcus Larkin, moved **Anvil Barbershop** from Gladstone to downtown Milwaukie in December 2014. Ryan has always wanted to open a shop in Milwaukie because he and his family have lived here for 18 years, and carrying on the tradition in his neighborhood was important to him.

Anvil provides classic barbershop services like shaves, fades, clipper cuts, and timeless styles, and offers a warm and inviting atmosphere. Anvil is open Tuesday through Saturday from 10 a.m. to 6 p.m. at 1928 SE Scott Street in downtown Milwaukie.

## HECTOR CAMPBELL

### NEXT MEETING:

MON, MARCH 14 @ 6:30 PM \* PUBLIC SAFETY BUILDING

At this time of year, everyone is looking forward to longer days, more sunshine, springtime flowers and Spring Break. If you're itching to start gardening, we may still have an available garden plot at Campbell Community Garden. Please visit [www.campbellgarden.org](http://www.campbellgarden.org), if you're interested. Some crops are already being harvested!

If you're going away for Spring Break, take precautions to lock up and, remember, you can ask the Milwaukie Police Department to stop by to check on your house while you're away. If you're staying close to home, spend some time walking around the neighborhood and let us know if you think there are projects or problems that could use some attention. We have accomplished several big projects over the years, such as building Homewood Park, installing a path down the east side of Home Avenue, south of Hunter Court, and establishing the Campbell Community Garden. Maybe you know of an intersection that could use a crosswalk to make it safer (we've got our eye on King Road at Home Avenue for a flashing pedestrian crosswalk there)? Or, maybe you have an idea for better signage or wayfinding? Let us know at [www.hectorcampbellnda.org](http://www.hectorcampbellnda.org).

All neighbors are welcome at the March 14 meeting at 6 p.m. at the Milwaukie Public Safety Building. In case you're interested, we're still looking for a neighbor to represent us on the Public Safety Advisory Committee.

## LEWELLING

### NEXT MEETING:

WED, MARCH 9 @ 6:30 PM \* LEWELLING ELEMENTARY

Lewelling had no neighborhood news to report for this month. Please look to April's issue for updates. The next neighborhood meeting will be on Wednesday, March 9 at 6:30 p.m.

For more information or questions, please contact Bryan Trotter at [LewellingTrotter@outlook.com](mailto:LewellingTrotter@outlook.com).

## LAKE ROAD

### **NEXT MEETING:**

**WED, MARCH 9 @ 6:30 PM \* ROWE MIDDLE SCHOOL**

By DEBI PATTEN, CHAIR

If you know me, you may have noticed I haven't really been around very much. I have been having some family stuff going and it sometimes I think it's getting the best of me. I am so lucky to have such a great Co-Chair to cover me when I just can't do the Chair stuff. I still feel guilty, but it's so nice not to have to worry about who's going to run the meeting when I can't make it. Thank you, Vince and Gwenn, for covering for me when I need it.

I was able to attend the February meeting and it was so nice to see familiar faces and meet a few new people. That is one aspect of attending the monthly meetings that is hardly mentioned—how the people you see sort of become like family to you. It really did my heart good to attend. If you're not sure where I'm going with this, I am happy to say it. You need to attend our meetings! You will get presentations about stuff you don't know anything about, you will learn City information that might have slipped by otherwise, and you will also get to know some really great people, who just happen to be your neighbors! Did I forget to mention we have pizza? If you do decide to go, I promise you won't regret it!

## ARDENWALD/JOHNSON CREEK

### **NEXT MEETING:**

**MON, MARCH 28 @ 6:30 PM \* LIZ'S CREATIVE CAFE**

Attending neighborhood association meetings is the best way to become involved and staying informed about your community. But, how do you stay informed between meetings? The Ardenwald-Johnson Creek Neighborhood Association has a way to keep you informed about neighborhood happenings—its own website. Ardenwald.org features the latest neighborhood news and announcements, such as the Friends of Tideman Johnson Park work parties, summer concerts, the holiday potluck, and the Davis Graveyard events.

Want to know what happened at the last meeting? Download the draft meeting minutes, which are available shortly after the meeting, or get a copy of the final minutes. Download the meeting agenda, too. The website also shares important information, features photos, helpful documents and forms, and handy links, and gives you a chance to sign up for the

neighborhood email list.

In addition to the website, Ardenwald-Johnson Creek has its own Twitter account at @Ardenwald\_JC\_NA, and Facebook account at [www.facebook.com/ArdenwaldJCNDA](http://www.facebook.com/ArdenwaldJCNDA). You can tell we like to keep you posted on neighborhood happenings!

One last thing—the Friends of Tideman Johnson Work Party is Saturday, March 5, from 9 a.m. to noon at Tideman Johnson Park.

## LINWOOD

### **NEXT MEETING:**

**THUR, MARCH 10 @ 6:30 PM \* LINWOOD ELEMENTARY**

Linwood is looking forward to longer days, warmer temperatures and more chances to be out and about. As you explore our area, make sure to take the opportunity to say hello to your fellow community members. There are a lot of great people around that care about this neighborhood. Some of them volunteer at Linwood and Sojourner Schools, some help sustain the community garden nearby, and others do their duty by cleaning up after themselves and their pets to keep our neighborhood a better place to live.

A great way to meet some of these folks and others is to attend a neighborhood meeting. Whether you have a complaint or a concern about something you've noticed, or you want to be better informed about community events and information, going to a NDA (Neighborhood District Association) meeting provides a forum for the people of Linwood. We'll be in the school library on Thursday, March 10 at 7 p.m. Please join us, and bring a friend from the neighborhood. If you can't make it to the meeting but still have something you want to address, please feel free to email Zac Perry at [linwoodzp@gmail.com](mailto:linwoodzp@gmail.com).

## ISLAND STATION

### **NEXT MEETING:**

**WED, MARCH 16 @ 6:30 PM \* MILWAUKIE GRANGE**

During Island Station's February meeting, neighbors discussed the placement of the Island Station emergency supply box, heard an update from the city's Arts Committee, and met with Isabel LaCourse from Portland Parks & Recreation to discuss habitat restoration on Elk Rock Island.

In January and February, neighbors partnered with Willamette Riverkeepers and other nearby jurisdictions for planting events at Spring Park, where dozens of volunteers planted more than 2,000 plants.



City of Milwaukie  
 10722 SE Main Street  
 Milwaukie, Oregon 97222  
 To reach the editor of *The Pilot*:  
 503-786-7503 | imlahj@milwaukieoregon.gov

Presorted  
 Standard  
 U.S. Postage  
 PAID  
 Portland, OR  
 Permit 990

ECRWSS

# Postal Customer

**WHICH NEIGHBORHOOD DO YOU LIVE IN? DON'T KNOW? CALL 503-786-7568!**

**ARDENWALD-JOHNSON CREEK**

Meetings held on fourth Mondays  
 6:30 p.m., Liz's Creative Cafe, 9401 SE 32<sup>nd</sup> Ave.  
 Chair, Jeff Davis  
 www.ardenwald.org

**HECTOR CAMPBELL**

Meetings held on second Mondays  
 6:30 p.m., Public Safety Bldg., 3200 SE Harrison St.  
 Chair, David Aschenbrenner  
 www.hectorcampbellnda.org

**HISTORIC MILWAUKIE**

Meetings held on second Mondays  
 6:30 p.m., Libby's Restaurant, 11056 SE Main St.  
 Chair, Ray Bryan  
 ray1bryan2@gmail.com

**ISLAND STATION**

Meetings held on third Wednesdays  
 6:30 p.m., Milwaukie Grange, 12015 SE 22<sup>nd</sup> Ave.  
 Chair, Cindy Miguel  
 IslandStationNDA@gmail.com

**LAKE ROAD**

Meetings held on second Wednesdays  
 6:30 p.m., Rowe Middle School, 3606 SE Lake Rd.  
 Co-chairs, Debby Patten & Vince Alvarez  
 debby.patten@gmail.com

**LEWELLING**

Meetings held on second Wednesdays  
 7 p.m., Lewelling Elementary, 5325 SE Logus St.  
 Chair, Bryan Trotter  
 lewellingtrotter@outlook.com

**LINWOOD**

Meetings held on second Thursdays  
 7 p.m., Linwood Elem., 11909 SE Linwood Ave.  
 Chair, Zac Perry  
 Linwoodzp@gmail.com



SUBSCRIBE TO RECEIVE THE PILOT  
 ONLINE. VISIT CITY'S WEBSITE,  
 CLICK SUBSCRIPTIONS.

**THIS IS YOUR CITY NEWSLETTER!**  
**TAKE A LOOK INSIDE AND  
 SEE WHAT'S GOING ON!**

## City Events Calendar

March 2016

| Sunday | Monday  | Tuesday   | Wednesday   | Thursday   | Friday   | Saturday   |
|--------|---|---|---|--|--|--|
|        |   | City Council Work Session (MCH) - 4 PM<br>City Council Regular Session (MCH) - 6 PM<br>1  | Citizens Utility Advisory Board (MCH) - 6 PM<br>2                                       | Ledding Cultural Forum (PND) - 7-8:30 PM<br>3          | Pond House Book Store 11 AM - 4 PM<br>4  | First Saturday Music Series (LED) - 2-3 PM<br>5                              |
| 6      | Design & Landmarks Committee (MCH) - 6:30 PM<br>7   | Kellogg Good Neighbor (Kellogg Plant) - 5:30 PM<br>8                                      | Lake Road NDA, (Rowe M.S.) - 6:30 PM<br>Lewelling NDA, (Lewelling Elem.) - 7 PM<br>9    | Linwood NDA (Linwood Elem.) - 7 PM<br>10               | Pond House Book Store 11 AM - 4 PM<br>11                                       | Pond House Book Store 11 AM - 4 PM<br>12                                     |
| 13     | Historic Milwaukie NDA (Libby's Restaurant) - 6:30 PM<br>Hector Campbell NDA (PSB) - 6:30 PM<br>14            | City Council Work Session (MCH) - 4 PM<br>City Council Regular Session (MCH) - 6 PM<br>15 | Arts Committee (MCH) - 5:30 PM<br>Island Station NDA (Milwaukie Grange) - 6:30 PM<br>16 | Foreign & Indie Film Night (PND) - 6 PM<br>17          | Pond House Book Store 11 AM - 4 PM<br>18                                       | Pond House Book Store 11 AM - 4 PM<br>Spanish Storytime (LED) - 2-3 PM<br>19 |
| 20     | Riverfront Task Force (MCH) - 6:30 PM<br>21   | Parks & Recreation Board (MCH) - 7:30 AM<br>Planning Commission (MCH) - 6:30 PM<br>22     | Fraud Prevention Panel for Seniors (PSB) - 1:30-3 PM<br>23                              | Public Safety Advisory Committee (MCH) - 6:15 PM<br>24 | Pond House Book Store 11 AM - 4 PM<br>Every Kid in a Park (LED) - 2-3 PM<br>25 | 26   |
| 27     | Library Board, Expansion Task Force (PND) - 5:30 PM<br>Ardenwald/JC NDA (Liz's Creative Cafe) - 6:30 PM<br>28 | City Council Study Session (MCH) - 6 PM<br>29   | Urban Renewal Advisory Group (MCH) - 4:30-6:30 PM<br>30                                 | Preschool Storytime (LED) - 10:30 - 11 AM<br>31        |  |  |

**MCH** - Milwaukie City Hall, 10722 SE Main St.     **JCB** - Public Works Building, 6101 SE Johnson Creek Blvd.     **LED** - Ledding Library, 10660 SE 21st Ave.

**PSB** - Public Safety Building, 3200 SE Harrison St.     **MC** - Milwaukie Center, 5440 SE Kellogg Creek Dr.     **PND** - Library Pond House, 2215 SE Harrison St.