



Milwaukie goes nationwide

The City enjoyed a bit of national praise last month for its Neighborhood Grants Program.

The program was recognized by the Innovations Group, a nonprofit, membership-based group of jurisdictions from throughout the country that meets every year to share winning ideas about improving local government services.

This year the City was asked to make a presentation at their June Conference in Dublin, Ohio.

The presentation team consisted of Councilor Jeff Marshall, the Ardenwald Neighborhood Chair Peter Koonce, and Neighborhood Services Manager Michelle Gregory.

The team told the story of why and how the City pursued implementing a neighborhood grant program, detailed how the program works and described several great projects that have resulted.

Several conference attendees asked if Milwaukie would be willing to make more presentations about its unique program at future conferences and within other communities.

As Jeff said, "Its great to see the City emerge as a leader on a national level."

If you'd like more information about this program, please call Jason Wachs, at (503) 786-7568. ☒

Milwaukie's Local Leaders

Festival organizer kept on the go

Sharon Van Horn's Festival Daze experience was a bit of a paradox.

On one hand, Sharon invested hundreds of hours overseeing nearly every aspect of the Festival's organization to ensure residents of Milwaukie and the region had an enjoyable time at the City's annual celebration.

On the other hand, over the three day festival, Sharon scarcely had the time to take a moment and enjoy the Festival for herself.

"I was kept running pretty much throughout the entire event," Sharon said laughingly. "I really wasn't able to relax the whole weekend."

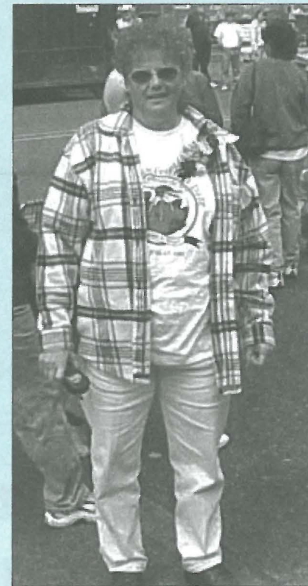
But Sharon explained she truly valued her experience organizing the event.

"I'm glad I (was Festival Committee Chair), it was fun to put together," she said. "I met a lot of different people and have become friends with a lot of people in the community. It was just a wonderful experience."

Sharon said the goal of this year's event was to provide festival-goers with a lot of different things to do and to really involve the commu-

nity. She thinks both objectives were met, and after picking up all of the experience from overseeing this year's event, she thinks next year's will be even better.

Sharon was quick to point out she was hardly the only one working to make the Festival a success. She identified Pat & Ken Kennan, Roz & Ed Giese, Bonnie Petty, Donna Gurian, John Angelis, James Botts, Jon Willie, Dave McDowell, Sharon Phillips and Roger Cornell as key contributors. ☒



Sharon Van Horn will also head next year's Festival. If you would like to become a part of the planning team that will create next year's Festival, please call Sharon at (503) 659-5651.

INSIDE THIS ISSUE

- 2** Learn the latest about the South Corridor Study; and take part in shaping our Parks District's Master Plan
- 4** New City Manager; Book Sale sets all-time high; Metro lifts hazardous waste fees; Photo Contest nearing conclusion
- 8** Calendar of events - Council, Boards and Commissions and Neighborhood Meetings

Program offers peace of mind

The Milwaukie Police Department can help you relax on your summer vacation.

By calling (503) 786-7400 and providing some basic information, Officers can make periodic checks on your house while you're away vacationing.

Here's how it works.

The Police Department representative will ask you the address of your home, if anybody is expected to visit while you're away, if there will be any lights on, if there will be any cars in the drive-

way, your departure and return dates, and how to reach you while you're away.

All of this information will help the officers checking your home determine if the house is safe and secure.

Chief Larry Kanzler said the service has already proven quite helpful for one homeowner.

"Just last week an officer checked a home and found the basement door had been left open," Chief Kanzler said. "It's a great service." ☒

South Corridor Study making cooperative steps

Milwaukie's transportation future is crystallizing a bit more everyday, thanks to some tremendous work by local leaders and talented staff who are committed to defining a solution to region-wide transportation problems the entire community can support.

In an exciting Joint Work Session of the City Council and Milwaukie's seven Neighborhood Associations on May 31, 2001, the group reviewed several options for Busway, Light Rail or Bus Rapid Transit coming to and perhaps someday, through Milwaukie. A total of 11 alternatives were presented to the community by staff from Metro and Tri-Met. Clackamas County Board of Commissioners Michael Jordan and Larry Sowa, and Metro Councilor David Bragdon and Tri-Met General Manager, Neil McFarlane listened as the community discussed its options.

The alternatives included options for a transit center in the North Industrial Area (several locations are under consideration), as well as a possible Light Rail station behind the Junior High building and one near the intersection of Lake Road and 21st Avenue. They were also presented with an option that would terminate on Main Street north of Harrison, and one that would locate a terminus and Park and Ride in Oak Grove.

Three busway alternatives were also presented, though they were met with lackluster response.

NDA Officers were pleased to see several of the alternatives addressing

the "14 points" they developed in March, and they expressed concerns about controlling traffic and parking associated with any future stations. The options were narrowed to five and additional information was requested of staff for the next public meeting, which will be **July 26th at 6 p.m.** at the **Milwaukie Junior High Gymnasium**.

The joint Work Session was followed by a meeting of the South Corridor Policy Group on June 5, where members from all the participating jurisdictions voted to include Bus Rapid Transit, Busway, and Light Rail in the Draft Environmental Impact Statement for the Corridor.

They also voted to add the study of a Light Rail Alignment along the I-205 Corridor, as a possible way to move commuters in East Clackamas County while addressing Milwaukie's concerns about pass-through traffic that could adversely impact its neighborhoods.

They also requested Milwaukie have the opportunity to view the remaining options once more for added feedback and further narrowing, before their next meeting on August 6 where they will direct project staff on what to study in the Draft Environmental Impact Statement portion of the study.

During the policy group meeting, Portland City Commissioner, Charlie Hales, made a point of commending Milwaukians for their admirable efforts to do real place-making, and strongly urged the other participating jurisdictions do the same.

To stay tuned about this study's progresses, contact your Neighborhood Chair (listed on the back) and try to attend the **Town Hall Meeting** on South Corridor Options, Thursday, **July 26th at 6 p.m.** in the **Milwaukie Junior High School Gymnasium**. Refreshments and child care will be provided. ☒



SOUTH CORRIDOR STUDY Transportation Alternatives

Help define the future of parks services in City

The North Clackamas Parks District is beginning an update of its District-wide master plan – a plan developed over 10 years ago that now needs to be updated to reflect today's community.

The document will serve as a 'roadmap' for the next 20 years, charting the priorities and needs of the entire district, and provides the plan for how to get there.

Specifically, the plan includes an inventory of existing and potential parks, recreation and older adult services and facilities and strategies on how to pay for them.

This master plan will identify a number of funding options including in-

creased system development charges and/or a possible funding measure on the November 2002 ballot.

City park projects such as Home Avenue Park, and Lewelling Park could be funded with money made available from this bond measure. That's why it's important to voice interest and support for these parks now so the funding can be made available later.

Ways to Get Involved:

• Upcoming Workshops include:

- Thursday, July 26 from 7-9 p.m. at Sunrise Middle School, 14331 SE 132nd, Clackamas.
- Saturday, July 28 from 10 a.m.-noon at the Milwaukie Center, 5440 SE

Kellogg Creek Drive, Milwaukie.

Both locations are fully accessible and refreshments will be served. Bring the kids to these family friendly events!

- "Subscribe" to the free newsletter to receive information on upcoming events.

To get on the mailing list, call the Parks District Office at 503-794-8002, e-mail to: suzanneb@co.clackamas.or.us or send your information to: NCPRD, 11022 SE 37th Avenue, Milwaukie, OR 97222.

- Visit our website at: www.ncprd.co.clackamas.or.us.
- For more information contact the Parks District at (503) 794-8002. ☒

RecMobile visits our City

The North Clackamas Park District's RecMobile will take to Milwaukie's streets in July and August, and like last summer, the van will be packed with games and crafts.

The RecMobile program will begin on July 9 and run through August 16.

Here's where you can track down the RecMobile,

Monday: Milwaukie Middle School (2300 SE Harrison St.) 10 a.m. to noon; Century Park (11500 SE 35th Ave.) 1 to 3 p.m.

Wednesday: Furnberg Park (6850 SE Furnburg) 10 a.m. to noon; North Clackamas Park (5440 SE Kellogg Creek Drive) 1 to 3 p.m.

Thursday: Water Tower Park (9890 SE Roth Ave.) 10 a.m. to noon; Ardenwald Park (3667 SE Roswell St.) 1 to 3 p.m. ☒

Farmer's Market peaking

The Milwaukie Sunday Farmer's Market is in full swing, and if you haven't been down to visit, now is the perfect time to start.

Brendan Eiswerth, the Market's overseer, says vendors are packing the parking lot across from City Hall (10722 SE Main St.) selling the finest fresh, local produce.

Brendan says berries will be the hottest item in July, and a lot of folks will be visiting from all over the region to buy them at their peak.

As with every Sunday, there will be live music and plenty of visiting with other Market goers, so come on down and enjoy the Milwaukie Farmer's Market. The Market begins at 10 a.m. every Sunday.

And if you're interested in volunteering with the Market's operations, please call Brendan at (503) 353-9123. ☒

Garbage Rates adjusted

City Council increased residential garbage collection rates in order to establish a more equitable balance between commercial and residential services on June 19, 2001.

In previous years, commercial revenues have subsidized residential revenues quite heavily. It is not anticipated the City will gain any revenue as a result of the rate change.

The rate change will effect customers differently depending on the size of the garbage receptacle people use. Those using a 32 gallon receptacle will pay about \$2.85 more every month.

However, in return, all customers will receive a 60 gallon roller cart for yard debris - about twice the capacity currently allowed. Customers can leave the equivalent of 60 gallons of yard debris until they receive their carts. ☒

Contact Council

Have something you would like to share with your City Council? Here are the Councilors voice mail numbers:

Mayor James Bernard: (503) 786-7510

Mary King: (503) 786-7512

Larry Lancaster: (503) 786-7511

Jeff Marshall: (503) 786-7514

Brian Newman: (503) 786-7513

The Mayor is also in his City Hall office an hour before each Work Session and Regular Session Meeting. ☒

Downtown mural depicts history

The City's newest 36 foot-wide mural at the intersection of Downtown's Main and Jackson Streets depicts the journey of the Lewelling family as it crossed the nation from Iowa to Milwaukie, Oregon, where the family decided to settle and plant their ornamental trees.

The mural's theme and location are intertwined. Larry Kangas, the mural's painter, explains the Sunday Farmer's Market takes place just across the street



The mural took two weeks to complete, and is 36 feet wide and nine feet tall.

and the Festival-goers can plainly see the giant mural, and that's why he de-

cidied to depict a story that had an agricultural bent. ☒

Library gears up for busy summer

Ledding Library's Childrens summer program is jam-packed with nine programs scheduled between July 2 and July 28.

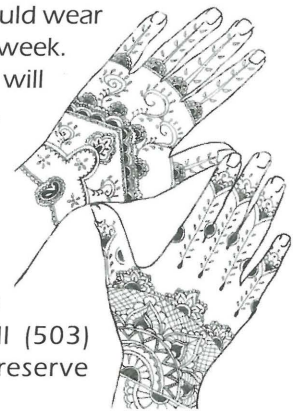
There will be puppet shows, magic shows, jugglers and a whole lot more, so stop by Ledding Library and grab a schedule.

On July 11 the Regional Arts and Culture Council will present the Mehndi Workshop. Mehndi is the 5,000 year old art of body decoration, and local Mehndi artist Harsha Prikh will be at the Library to demonstrate the art form she learned as a child growing up in

Bombay, India. The designs are made with a paste from henna plants, and should wear off in about a week.

The workshop will begin at 2 p.m.

This special event is for young adults ages 11 and up, and is limited to just 30 people, so call (503) 786-7588 to reserve your spot. ☒



Mike Swanson becomes City's full-time Manager

Milwaukie City Council and City Manager Pro Tem Mike Swanson agreed on a contract on June 20, 2001 that would remove "Pro Tem" from his title.

Mike had been the interim City Manager for the previous 10 months before accepting Council's offer to become Milwaukie's full-time City Manager.

Mike has a breadth of local government experience that includes several years as a Clackamas County Administrator and a variety of consulting assignments in the region.

The decision was made after Council had completed a thorough search con-

ducted by the firm of Bob Murray & Associates.

Mike's contract will officially begin on Sept. 1, 2001 and has been negotiated for a 3-year term. The City Manager will earn a \$94,000 annual salary, will receive a car allowance and four weeks vacation. Mike, who lives with his wife, Judith and daughter Rachel, in Lake Oswego will not be required to relocate to Milwaukie, as the Council determined he is within close enough proximity to comply with the requirements of the City Charter.

Mike has worked hard with City staff,

citizens, and Milwaukie's elected officials over the last year to support the community through a time of significant transition.

During his Pro Tem status there has been a Council election, a significant amount of management-level staff turnover, a financial and information technology audit, a clarified budget process, and a movement among the Milwaukie Neighborhood Associations to take a proactive, unified position regarding the City's long term growth and transportation goals. To contact Mike, call (503) 786-7501. ☒

Book Sale sets all-time high

The morning after Ledding Library's three-day book sale of June 15, 16 and 17, Carol Kay, the sale's organizer, offered the following assessment.

"In summation, we're exhausted, but very happy," Carol said.

And with good reason. The sale raised an all-time high of more than \$7,933 about \$2,300 more than last year, which was the previous record-setting total.

"We just had oodles of people," Carol said. "We were busy, busy, busy all day, all three days."

All of the money will fund Library projects and programs, and tax-deductible donations for next year's sale are already being received. If you



Book Sale organizer Carol Kay

have books, CD's, sheet music, or vinyl records, please donate them and make next year's book sale an even greater success. ☒

Photo Contest winners to be selected in July

The entries are in and Milwaukie's City Councilors will determine the winner of the City's Tree Hugger Photo Contest at their July 16 Work Session.

More than 20 entries were submitted, and the Council thanks everyone who shot a photo exhibiting their love and appreciation of the trees that makeup our urban forest.

The winning photos will be published in the August edition of the *Pilot*, in the City's facilities, and on the City's web page.

The winning photographers will be recognized at the July 17 City Council meeting, and will be awarded gift certificates from a local Nursery. ☒

Metro removes household hazardous waste fees

Because Metro Council unanimously voted to remove household hazardous waste collection fees at transfer stations on May 31, 2001, Milwaukie residents will find it a lot easier and cheaper to safely dispose of household hazardous waste.

This change in policy not only makes it easier to safely dispose of everyday products such as paint, oil, pesticides and cleaners of the region, but ultimately helps us protect the natural resource system of the region for its fish, wildlife and people.

"This action furthers Metro's efforts to make safe disposal of these hazardous materials as easy and inexpensive as possible," commented David Bragdon, Metro Council presiding

officer. "We want to provide as many incentives as possible for everyone to act in an environmentally responsible way."

The fiscal impact of the Metro Council action is a reduction in revenues of approximately \$40,000 per year for the next three years. The loss in collection fees is relatively small to the size of the program and will have no effect on the delivery of service at the Metro hazardous waste facilities.

Metro's hazardous waste facilities are located at Metro South Station, 2001 SW Washington, Oregon City, and Metro Central Station, 6161 NW 61st, Portland.

For more information about preparing materials to bring to Metro and what can be accepted, call Metro Recycling Information, (503) 234-3000. ☒

AROUND TOWN

The Around Town section gives elected Neighborhood Leaders an opportunity to interpret issues facing their community as well as promote greater neighborhood involvement. As a result of this open forum the opinions presented may not always represent the attitudes of the City or of the author's entire Neighborhood. The Pilot and its participating Neighborhood Officers welcome your feedback. Please see page 8 for contact information.

LAKE ROAD

Written by **Teresa Bresaw**, Co-Chair

NEXT MEETING'S INFO:

When: Summer BBQ - (see below for details)

Our meeting time in September changes to the 2nd Wednesday of the month in a classroom at Rowe Middle School because of the building expansion being done. At our last meeting we talked to Gary Kryszak, project manager for the Rowe Middle School project. For our tree planting on Lake Road in front of the school, their landscape architect recommends Akebono Cherry and Red Oak or Red Maple down Shell Lane where there aren't power lines to obstruct the height. To give your input on what trees to plant, come to the September meeting.

On the transportation issues Mil-

waukie is facing, now is the time to get involved, since decisions will be made that will affect us. Public comment is needed, so the best decision can be made for all. One possibility being discussed is a 21st Avenue & Lake Road terminus for light rail. This needs to be carefully thought out, since we don't want anymore pass through traffic then we already have.

Other ways to lighten the load of cars on the roads is to choose jobs that are close to home or move closer to our jobs. You can actually look for jobs by location on the Internet at home or in the library. Businesses can do their part also, by giving incentives to employees who carpool, ride their bikes, walk, or take public transit. A possible incentive is 1 day off a year with pay. Land use planners need to set aside the right amount of land in strategic areas for jobs to prevent people from

commuting long distances.

Housing choices will also dictate traffic conditions. That's why design guidelines are an important part of this along with preventing negative results of density, which can cause people to move out of the cities. We can't make it a perfect world, but that shouldn't stop us from improving things. There isn't going to be one solution to our crowded roads, but varied solutions starting with each person make the best choices.

**Don't Forget About
The Lake Road Summer
Barbecue!**
Century Park
July 28, 2 p.m.



Lake Road in the Festival Daze Parade

ARDENWALD/JOHNSON CREEK

Written by **Sherri Campbell**, Secretary

NEXT MEETING'S INFO:

When: National Nite Out Celebration on August 7

Our Summer Reading Program will begin on Thursday, July 12, from 1 to 3 p.m. in Ardenwald Park. We will be giving four free books to each child who attends, and each adult who attends will have the opportunity to read to the children. This volunteer time matches the funds provided by Milwaukie's Neighborhood Grant Program. The reading program will run July 12, 19, and 26, and August 2 and 9, when we will have a last day party. This is in conjunction with the North Clackamas Park and Recreation District.

The Parks District will also be holding its Summer Concerts series in Ardenwald Park through August every Thursday night, from 7 p.m. to dusk.

Our National Night Out For Safety event will be held on August 7, but we are considering holding our own Night Out for Safety during the Summer Concerts, as they are so well attended.

June 12 marked the Ardenwald/Johnson Creek Neighborhood's last regular meeting for the summer so we

held elections for next year. Returning as President is Peter Koonce, we snagged Tom Bowman as Vice President, and Joe and Sherri Campbell will continue as Secretary and Treasurer. Members at Large are Lillie Moore and Susan Stone.

AJC's bylaws stipulate that we have members from both Portland and Milwaukie and most of our discussion this month tended toward the Portland side; Tacoma Street and Johnson Creek Boulevard in particular. Plans are underway to widen Johnson Creek Boulevard between 32nd and 42nd Avenues. These plans call for the taking of some very large parcels of property and trees from some of our neighbor's front yards. We discussed ways to get the City of Portland to listen to our concerns.

We are members of the Portland Neighborhood Southeast Uplift coalition, (SEUL) and our new liaison, Laura Feldman was in attendance. She suggested contacting the Land Use arm of SEUL.

Our other concern came up in discussing the South Corridor Transportation Study. Every plan under consideration has a four-story, 1,000 car parking garage near the Goodwill site on Tacoma and McLoughlin. Will those cars be driving through our neighborhood? We think they will.



AROUND TOWN

HISTORIC MILWAUKIE

Written by Ed Zumwalt, Chair

NEXT MEETING'S INFO:

When: July 12, 7 p.m.

Where: Milwaukie Elementary (Outside)

(Located at 250 SE 27th Ave.)

In a remarkable three and a half hour Joint Work Session on May 31, 2001, members of the Milwaukie City Council, Neighborhood Association Officers, Metro and Tri-Met officials, Clackamas County leaders and our City Staff labored to narrow down Light Rail and Busway options from an almost unmanageable list of 11 to something the community can put forward in the next phase of the South Corridor Study.

Jeanne Lawson was the meeting's facilitator, and the various Rail and Busway routes were presented by Michael Fisher of Tri-Met and Dave Unsworth of Metro.

Listing and describing the various options would be too unwieldy for this space, but those remaining will be presented to the public in many and various informational forums and outreach programs in the near future (See Page 2).

Metro and Tri-Met must be commended for the tremendous amount of effort they put forth to amass such a great amount of technical material in such a short time.

The most striking element of the evening was the harmony evident between all concerned contingents. To watch old animosities and mistrust dissolve in the process of forging a workable transit system for the future of our town and our region was really something to observe.

Maybe now is the time for all parties in this venture to view each other with greater trust and to be more sensitive to others' views and positions. Only in this way can we be successful in avoiding the challenges that are sure to arise in such a vast undertaking. We must realize our goal of providing efficient transit while preserving the livability of our City



In the next four issues of the Pilot we are going to provide a more detailed map of one of the City's seven Neighborhood Associations so Milwaukie residents have a better idea of which Neighborhood they live in. So take a look at this map of the Historic Milwaukie Neighborhood, and if you live within its boundaries, check out a meeting! Next month will take a closer look at the Island Station Neighborhood.

and its Neighborhoods.

On another note, I again must chide our City liaison, Michelle Gregory, for falling behind in her attempts to master our secret handshake. Although this maneuver does require a certain amount of manual dexterity, she should have mastered it by now. This matter will be taken under advisement by our probationary board.

Added Note: Hi, G.W.B.

LINWOOD

NEXT MEETING'S INFO:

When: NOT YET DETERMINED

The Pilot would like to take this opportunity to thank Dolly Macken-Hambright for her years of service to the community.

After several years of serving as her Neighborhood Association's chair, she has decided to step aside to let some new leadership move to the forefront.

Dolly has been a leader in the devel-

opment of crime prevention and safety programs in the City, and she's shepherded many Neighborhood Grant projects to fruition.

She has also worked very hard to make sure her neighbors' interests are represented in transportation, growth and development concerns that affect them.

Dolly will stay on as Secretary and Treasurer and will remain deeply involved in the South Corridor Study process.

Edie Kerbaugh will step in as Acting Chair until an election can be held in September.

If you would like to become involved with the Linwood Neighborhood, have a concern you would like to address at a future meeting, please contact Edie at (503) 653-8015.

It is not yet known when the Linwood Neighborhood Association will reconvene its meetings. Please look in future editions of the Pilot to learn the latest meeting information.

AROUND TOWN

HECTOR CAMPBELL

Written by David Aschenbrenner, Chair

NEXT MEETING'S INFO:

When: July 11, 7 p.m.

Where: Campbell Elementary, (Located at 11326 SE 47th Ave.)

Well how to start this article for the *Pilot*? First I hope everyone made it down to Milwaukie Festival Daze. Second I hope your summer is going well and safe.

So on to Neighborhood Business,

1. The South Corridor and Light Rail is still on the agenda and you still have time to let your Neighborhood leaders know how you feel about the proposals and give your input. Please let your thoughts be known. PLEASE attend the Town Hall Forum on July 26 at 6 p.m. in the Milwaukie Jr. High.

2. We need comments on the Draft Plan for Homewood Park [see plans to the right.] We want to move on to the next phase of this park soon and need input from the community. Give me a call, and tell me what components of Plan A and Plan B you would like to see incorporated in the final plan.

At this time I have not set the location for the summer meetings.

As always you can e-mail me at davidasch@home.com.

ISLAND STATION

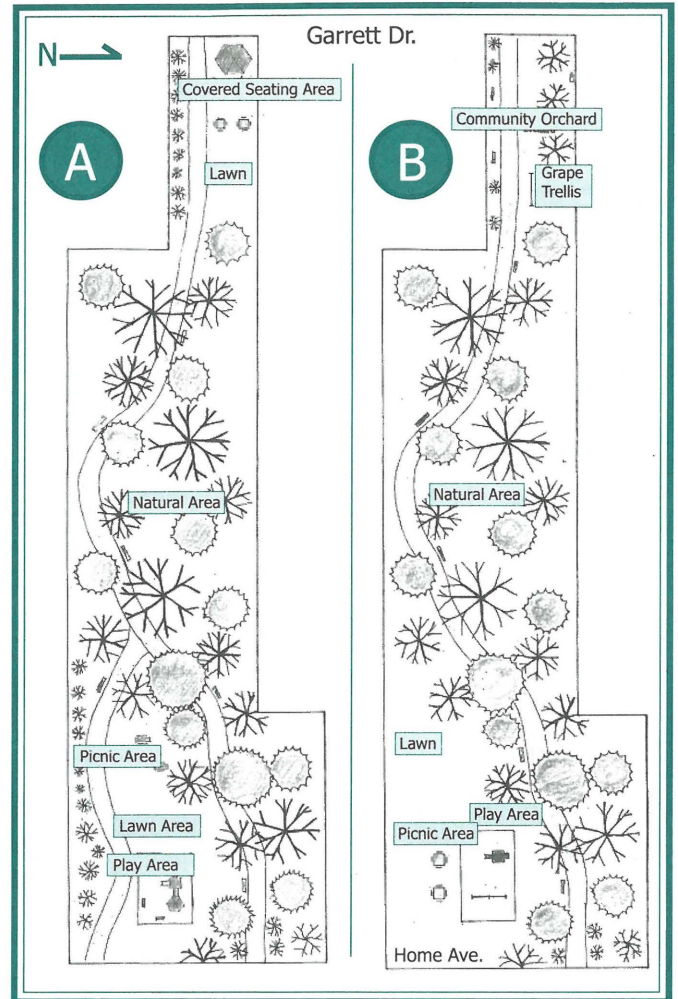
NEXT MEETING'S INFO:

When: July 19, 7 p.m.

Where: Milwaukie Grange, (Located at 11326 SE 47th Ave.)

Last year's Summer Barbecue was a complete success. There were two bands, heaps of great grub, and most importantly, a lot of Island Station Neighbors mingling about and visiting with one another. Now it's time to plan this year's barbecue, and Neighborhood Chair Rick Farasy urges residents to attend the July meeting and lend their suggestions so this year's event is even better.

Another Spring Park Cleanup is being put together for either July or August, and Rick is hoping to organize a crew that will remove blackberry bushes and clear away dried out



vegetation that could become a fire hazard. Give him a call at (503) 786-2437 if you would like to volunteer.

On a final note, summer time typically means family vacation time, and Rick encourages Neighbors to let each other know when they'll be out of town so they can keep an eye on each others' homes.

LEWELLING

Written by Art Ball, Chair

NEXT MEETING'S INFO:

When: August 4, Summer Picnic

Where: Lewelling Elementary

(Located at 5325 SE Logus Ave.)

Rummage Sale a Huge Success

It was another big day for The Lewelling Neighborhood Association and the community and friends who joined together to make the fund-raiser for The Lewelling Park at Stanley and Willow a huge success.

Lewelling is a community that comes together and works together to make the fund raiser for the Lewelling Park at

Stanley and Willow a huge success.

Cash donations, sale of goods and most of all the raffle for the combination twin\full size bunk bed provided by Don Simenson and Bunk Beds West gave us a total take for the sale of \$2509, with contributions from the raffle of the bed amounting to \$620 of this figure.

After donating their own treasures, which we all know is very difficult at times, Neighbors were at the sale bright and early eager to replace them and of course many found just the right substitute for just the right price.

All the proceeds from the sale will be

dedicated entirely to expenses associated with the development of the community park.

This money will help cover the expense for survey and design work required prior to developing the actual construction design.

To all the people involved (too many to mention by name) who gave their time, effort and energies to this wonderful project I want to say a MONESTROUS THANK YOU to each of you. You are the BEST!

Lucky winner of the beautifully crafted bunk bed was Mr. Scheneman, who resides on S.E Drake in Milwaukie.



| Sunday | Monday | Tuesday | Wednesday | Thursday | Friday | Saturday |
|--------------------------------------------------------------------------|-------------------------------------------------------------------------------------------|--------------------------------------------------------|------------------------------------------------------------------------------------------------------------------------------|--------------------------------------------------------------------------------------------------------------------------------------------|----------------------------------------------------------------------------------------------------------------------------------------------------------------------------------------------------------------------------|-------------------------------------------------------------------------------------------------------------------------|
| The Milwaukie Farmer's Market Across From City Hall 10 a.m. 1 | 5:30pm City Council Work Session, (MCH) 6:00pm City Council Regular Session (MCH) 2 | | 7:00pm Citizens Utility Advisory Board (JCB) Concerts in the Park! Scott Park, Next to Ledding Library Noon 4 | 7:00pm Lewelling NDA (Lewelling Elementary) 5 | 10:00am Center/Community Advisory Board (MC) 6 | |
| The Milwaukie Farmer's Market Across From City Hall 10 a.m. 8 | 7:00pm Hector Campbell, H.C. Elementary 6:00pm Transportation Safety Board, (JCB) 9 | 6:30pm Planning Commission Regular Session (MCH) 10 | Noon MDDA Board Concerts in the Park! Scott Park, Next to Ledding Library Noon 11 | 7:00pm Historic Milwaukie NDA (Milwaukie Elementary) 12 | | |
| The Milwaukie Farmer's Market Across From City Hall 10 a.m. 15 | 5:30pm City Council Work Session, (MCH) 16 | 6:00pm City Council Regular Session (MCH) 17 | Concerts in the Park! Scott Park, Next to Ledding Library Noon 18 | 6:30pm Island Station NDA (Grange) 19 | | |
| The Milwaukie Farmer's Market Across From City Hall 10 a.m. 22 | 6:30pm Library Board (Library) 23 | 7:00pm Parks & Recreation Board (MCH) 24 | 6:00pm Design and Landmarks Commission, (MCH) Concerts in the Park! Scott Park, Next to Ledding Library Noon 25 | South Corridor Study Town Hall Milwaukie Jr. High 6 p.m. (see page 2) Parks District Master Plan Workshop (See page 2) 26 | | The Lake Road Summer Barbecue! Century Park 2 p.m. Parks District Master Plan Workshop (See page 2) 28 |
| The Milwaukie Farmer's Market Across From City Hall 10 a.m. 29 | | | Concerts in the Park! Scott Park, Next to Ledding Library Noon 31 | | MCH - Milwaukie City Hall, 10722 SE Main Street PSB - Public Safety Building, 3200 SE Harrison Street JCB - Public Works Building, 6101 SE Johnson Creek Blvd. MC - Milwaukie Center, 5440 SE Kellogg Creek Drive | |

NEIGHBORHOOD ASSOCIATION INFORMATION

ARDENWALD AND JOHNSON CREEK
Meetings held on second Tuesdays
6:30 p.m., Ardenwald School
Chair, Peter Koonce, 654-4558

HECTOR CAMPBELL
Meetings held on second Mondays
7 p.m., Hector Campbell School
Chair, David Aschenbrenner, 654-4258

HISTORIC MILWAUKIE
Meetings held on second Thursdays
7 p.m., Milwaukie Elementary
Chair, Ed Zumwalt, 654-2493

LINWOOD
Meetings held on fourth Thursdays, 7 p.m., Linwood Elementary
Acting Chair, Edie Kerbaugh, 503-653-8015

ISLAND STATION **NEW!**
Meetings now held on third Thursdays
6:30 p.m., the Milwaukie Grange
Chair, Rick Farasy, 786-2437

LAKE ROAD
No meeting until September
7 p.m., Meetings back at Rowe Jr. High
Chair, Teresa Bresaw, 786-4690

LEWELLING
Meetings held on first Thursdays
7 p.m., Lewelling Elementary
Chair, Art Ball, 786-4016

Meeting Broadcast Information:
City Council Work Sessions: Channel 30
Tues., Thurs., Sat.: 10 a.m., 2 p.m., 7 p.m, 2 a.m.
City Council Regular Sessions: Channel 30
Sun., Mon., Wed., Fri.: 6 a.m., 2 p.m., 7 p.m., 12 a.m.
And when meetings aren't being rebroadcast, check out the City's Cable Information System

The City of Milwaukie looks forward to any questions or suggestions you might have. Please drop us a line or give us a call.

Neighborhood Services
10722 SE Main Street
Milwaukie, Oregon 97222
Phone: 786-7503
email: wheelerg@ci.milwaukie.or.us



Presorted
Standard
ECRWSS
U.S. Postage
PAID
Gladstone, OR
Permit No. 30

Postal Customer