

## Milwaukie's Local Leaders

### Bringing people together

Diana Morris explains that the residents of Hillside Manor didn't use to mingle all that much.

"It seems a lot of people say, 'I don't want to get involved', Diana said, "but that's so boring."

Equipped with this outgoing attitude, Diana became president of the Hillside Residents Association, and started a six-page monthly newsletter that's distributed to the 100 homes and duplexes that makeup her neighborhood.

Diana took charge in October, and due to a combination of reasons, Diana says people are really beginning to become more involved. Some monthly meetings draw as many as 35 residents.

"It's going pretty good," Diana said. "People are starting to get involved, starting to introduce themselves to one another, talk with one another."

Diana explains the neighborhood has a history of being segmented, that because Hillside is public housing, residents were somewhat distrustful of one another.

"But public housing has really changed, it is not what it used to be," she said.



Here Diana Morris does her beading, a hobby she's enjoyed since childhood.

More stringent qualifications and regulations have removed much of the suspect activity, leaving people who Diana characterized as people who are "just trying to get a leg up."

And it seems residents are more and more the ones helping each other get that leg up.

In addition to the monthly meetings, there are weekly afternoon meetings where people get together, discuss concerns, and attend workshops teaching skills like safety, nutrition and gardening. ☒

### Help set design for Downtown

What do you want downtown to look like in 20 years? What is downtown's personality and character and how do you want to preserve or enhance it?

The City of Milwaukie Design and Landmarks Commission is seeking your input to develop design guidelines for downtown that will help define the aesthetics of development that moves into downtown. In other words, what it should and shouldn't look like.

In September 2000 the City Council

Please see **Design** on page 4

### Sanitary rate may be altered

The City of Milwaukie is proposing to change the existing sanitary sewer rate structure.

The proposed structure would have a variable rate based on volume plus a fixed charge per unit to compensate for the amount of water entering the sanitary sewer system. The proposal is in response to customers who feel the current rate structure is not equitable after last year's rate increase.

Please see **Rate** on page 4

#### INSIDE THIS ISSUE

**2** Neighborhood Leaders discuss Light Rail; Down to Earth Day set and ready; Do you hug your tree?

**4** Come enjoy the Public Safety Open House; the Farmer's Market returns.

**8** Calendar of events - Council, Boards and Commissions and Neighborhood Meetings

### Police begin Geo-Based Policing

In January of this year the Police Department began implementing a Geo-Based Policing strategy, a system in which two officers are assigned to each of the City's seven Neighborhood Districts.

The system is designed to develop greater accountability, familiarity, and comfort between the police force and the residents they serve. Geo-Based Policing attaches names and personalities with a force that is more than 30 officers strong, so that more personal

relationships can be formed and more collaborative solutions to neighborhood law enforcement concerns can be created.

Chief Larry Kanzler says that each Neighborhood's officers are available to them 24 hours a day, seven days a week, and those interested in meeting the officers should attend their next Neighborhood Association Meeting, where the officers will be acting as liaisons, talking about Neighborhood crime trends, and listening to neighbors' concerns. ☒



## Do you hug your tree?

In celebration of Arbor Day, the City of Milwaukie is sponsoring a "Tree Hugger" Photo Contest.

If you love a tree in the community, show it, and then ask someone to snap a picture.

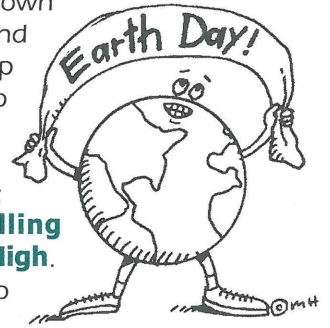
The winners will receive a gift certificate from a local nursery and be recognized by City Council. Contestants have until May 30th to submit photos. Rules and guidelines do apply. For a list, please call Neighborhood Service Manager Michelle Gregory at (503) 786-7539. Send your submittals to: Tree Huggers, Milwaukie City Hall, 10722 SE Main, Milwaukie, OR 97222, or email them to the address on Pg. 8. ☒

## DTE Day set for May 19

The City-wide Collection Event, Down to Earth Day is set for May 19, and people can start lining up to dump their loads of yard debris, scrap metal and household junk beginning at 8:30 a.m.

This year's dump sites are: **Linwood Elementary, Lewelling Elementary and Rowe Junior High.**

Those seeking curbside pickup should call (503) 786-7508. ☒



## Neighborhood Leadership talks Light Rail

At the March 28, 2001 Quarterly Leadership meeting, officers from the City's Neighborhoods hammered out a set of recommendations responding to the South Corridor Study's latest transportation options.

Recognizing Milwaukie as the hub of the corridor's three segments and tiring of lack luster proposals generated by other agencies, the group reviewed the options and offered creative alternatives.

After dismissing HOV lanes, Busways and Bus Rapid Transit as being either bad for the environment, detrimental to

our community or ineffective in the long run, the group concluded that light rail could be a viable transportation option -but only if it's built on Milwaukie's terms.

The leadership outlined 14 conditions under which the Neighborhoods could support light rail, relayed these points in a memo to the City Council and discussed them with Council at their April 2<sup>nd</sup> Work Session.

Chief among the concerns was the relocation of the transit center from the Safeway site to a northern location that could accommodate the projected increases in traffic and bus transfers.

The group also called for the inclusion of a local service station behind the Junior High site that would make use of existing tracks and connect with local buses. The remaining property would be donated to the City for community purposes.

The Leadership also set criteria ensuring light rail lines are routed around our neighborhoods rather than through them if extensions occur, and suggested a traffic

study be focused on I-205 to alleviate eastern traffic. Additionally, they felt the concept of commuter rail going from behind the Junior High site and across the "forgotten bridge" should be considered.

Finally, they appealed for regional mitigation of the livability impacts that would be created by becoming a multi-modal regional transportation hub: namely, helping with the creation of a pedestrian underpass to the riverfront at McLoughlin Boulevard and building a parking structure at the northern transit center to accommodate commuters.

Metro Presiding Officer David Bragdon and Executive Officer Mike Burton attended the April 17<sup>th</sup> Council meeting to voice their support of the neighborhood's transportation plans.

Southeast Uplift, a coalition of Portland neighborhoods, have also expressed support of the proposals, as they have been longtime supporters of light rail and neighborhood livability.

To learn the latest information attend your neighborhood meeting or contact your neighborhood chair. (Meeting and contact information is listed on pg. 8) ☒



The March Quarterly Leadership Meeting

## City Manager to present Proposed Budget May 7

City Manager Pro Tem and acting Budget Officer Mike Swanson will present the Budget Committee with the City's Budget Message and Proposed Budget on May 7, 2001 at 5:30 p.m. in the Public Safety Building Community Room.

The Budget Message provides an explanation of the budget and of the City's financial priorities, and the Proposed Budget represents the City's financial and operating plan as recommended by the Budget Officer. Public input will be taken at this May 7 meeting, and the Committee will also set the date for the Budget Hearing.

The Budget Hearing is designed to give citizens a chance to offer their opinions concerning the Proposed Budget. This Budget is developed from the Requested Budget, which is a "wish list" of sorts submitted by all of the City's Department's. After hearing presentations from each department at Budget Meetings held in March and April, and meeting with Department Heads individually, Mike has developed the Requested Budget into a balanced Proposed Budget. After the Budget Hearing is held, Council will move to adopt the budget. The budget must be approved no later than June 30, 2001. ☒



## Farmer's Market returns

**Market Opens!**



**Sunday, May 20!**

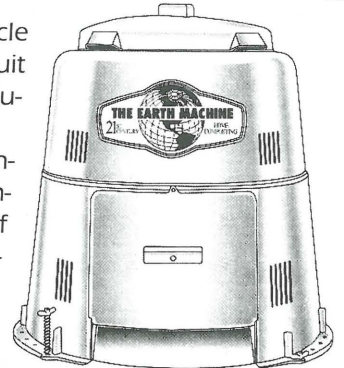
**10 a.m., Across from City Hall!**

## Pick up an Earth Machine

This year's Compost Bin Sale will be held on Saturday, May 12, 2001 from 8 a.m. to 5 p.m. at the Warn Industries parking lot, located at 13270 SE Pheasant Ct. in Milwaukie.

Buy a bin for \$25 and recycle your grass clippings, leaves, fruit and vegetable scraps into valuable compost for your garden.

The Compost Bin Sale is sponsored by Metro and local governments, including the City of Milwaukie. For more information call JoAnn Herrigel, Program Services Coordinator, (503) 786-7508. ☒



## The season for conservation

In the coming months there's a strong possibility we're all going to be hearing a lot about the region's water supply, and the shortages that may result from our unusually dry fall and winter seasons.

Now is a good time to present Milwaukie citizens with some basic facts about its water system, before the summer and water usage heats up.

Our City draws its water from the Troutdale aquifer, an underground lake that spans out to Troutdale. Our aquifer is fed by water that filtrates through the soil from three primary sources: water from the Columbia River, rainwater and snow melt from Mt. Hood.

Our water system taps this aquifer with seven wells, and serves its 6,500 customers by pumping the water through 100 miles of water line. The city has the capacity to pump up to 6 million gallons a day, and to store up to six million gallons in the City's three tanks.

The capacity of our system puts the City in a good position to withstand any region-wide shortages that may occur, but it might be a good idea to begin considering conservation strategies.

Check future editions of the Pilot and the City's cable channel for water saving tips, and if you have any questions about our water system, contact Water Operations Supervisor Jay Saatkamp at (503) 786-7616. ☒

## Attend City's Police and Fire Public Safety Open House

The Milwaukie Police Department and the City's fire protection provider, Clackamas Fire District No. 1, will hold an Open House from **1 p.m. to 4 p.m. on Saturday, May 19, 2001** at the **Milwaukie Public Safety Building**. Interested residents will be able to look around their Police and Fire Station, ask questions of the Firefighters and Police Officers on hand, and watch public safety demonstrations.

Some of the special activities include:

**A Bicycle Rodeo and free Helmet Fittings!**



**Antique Fire Truck Showcase!**

**A Bicycle Helmet Sale!**

**Free Child Identifications!**



## Mayor Bernard takes the oath

On April 17, 2001 Jim Bernard took the oath of office and became Milwaukie's 27th Mayor.

In order to familiarize himself with City staff, Mayor Bernard scheduled meetings with individual departments to learn their responsibilities and concerns. He also set office hours so residents can drop in and share their ideas and opinions.

The Mayor will be in his office on the second floor of City Hall one hour prior to Council Work Sessions and Regular Sessions. ☒



Jim Bernard (left) and Judge Ron Gray



## Residents make use of Grants

In this month's **AROUND TOWN** section on page 4-7 you will find a box listing the grant projects Milwaukie's seven Neighborhood Associations have planned. The purpose of these boxes is twofold. First of all, we want to show you the projects your Neighborhood Association is pursuing. Secondly, we hope that listing the programs will help you come up with some ideas of your own,

and that you will share them with your Neighborhood.

If you would like to learn more about the program, or have an idea for a future grant, please contact your Neighborhood Chair – the contact information is featured on page 8.

And if you have an idea, please act fast, as the deadline for next quarter's Grants is June 1, 2001. ☒

## AROUND TOWN

### LEWELLING

Written by Art Ball, Chair

#### NEXT MEETING'S INFO:

When: May 3, 7 p.m.

Where: Lewelling Elementary

Were you at the April meeting where we talked about the Logus Road Issue, Neighborhood signs, the South Corridor Transportation Study, increase in sewer rates, Festival Daze festivities, and the large parking lot sale we are planning for June?

Well, if you missed the meeting and any of the above subjects are of any interest to you, there's nothing stopping us from revisiting these topics at our May meeting. Please come to the meetings and share your comments for consideration.

#### Logus Road Sidewalk

By the time you read this article the Neighborhood Association and a Milwaukie City Engineer will have presented the Logus Road sidewalk issue to the City Council for their information and consideration.

If after weighing all the information the council determines a sidewalk is re-

Please see **Lewelling** on page 7

## Make a Book Drive donation

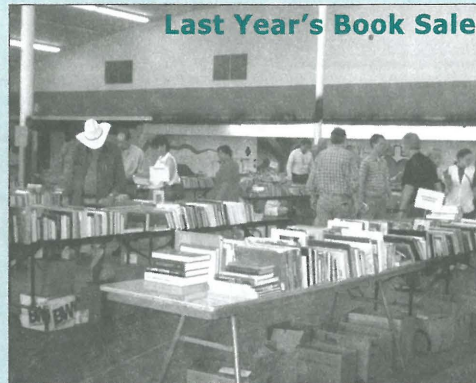
The Ledding Library will hold a Book Drive on Saturday, May 5, 2001 from 10 a.m. to 3 p.m. at the old Safeway building standing just across the parking lot from Ledding.

The materials collected at the Drive will be sold at its Book Sale held during Milwaukie Festival Daze on June 15, 16 and 17.

People can donate more than just books – compact disks, records, tapes and sheet music can all be dropped off at the old Safeway Building – the same spot where the Book Sale will be held.

All donations are tax deductible.

After you donate your books and



CD's, drop by the Library to see Emma Flores demonstrate the craft of creating Mexican Paper Flowers. The demonstration will begin at noon. ☒

### Design from page 1

adopted the Milwaukie Downtown & Riverfront Plan, creating a blueprint for the downtown that provides for the renovation of our historic buildings while setting design standards that ensure new structures fit in with downtown's existing character.

The Design and Landmarks Commis-

sion will be conducting public meetings throughout the summer, and the first one kicking off the series will be held on May 10, 2001.

The Commission is expected to recommend guidelines to the City Council by October of 2001.

The Thursday, May 10<sup>th</sup>, meeting will

be held at 6 p.m. in the City Hall Conference Room, 10722 SE Main Street. All are encouraged to attend and share their ideas and learn more about this project.

If you have any questions, please contact Planner Kenneth Kent at (503) 786-7653. ☒

### Rate from page 1

The City of Milwaukie currently charges its residential sanitary sewer customers a flat bimonthly fee of \$36.25. The commercial customers pay a fixed sanitary sewer charge plus a volume-based sanitary sewer charge for each unit of water used over 16 units.

The new proposed rate structure would charge residential customers a lower fixed rate and a variable rate based upon an average of every hun-

dred cubic feet (CCF) of water used during the winter months (December-March).

This rate structure would phase in over a three year period with the fixed rate decreasing to \$15.00 per billing cycle over the next three years. Commercial customers would be charged year round for every CCF used.

The basis for using the average flow of water during the winter months is to

compensate for water used for irrigation purposes that does not enter the sanitary sewer system.

Anyone interested in the proposed new rate structure is encouraged to attend a public hearing for the adoption of this rate structure on **June 5<sup>th</sup>, 2001 at 7:00 p.m.** in the **City Hall Chambers**.

If you have any questions, please contact the City of Milwaukie Public Works Department at (503) 786-7600. ☒



# AROUND TOWN

The Around Town section gives elected Neighborhood Leaders an opportunity to interpret issues facing their community as well as promote greater neighborhood involvement. As a result of this open forum the opinions presented may not always represent the attitudes of the City or of the author's entire Neighborhood. The Pilot and its participating Neighborhood Officers welcome your feedback. Please see page 8 for contact information.

## ARDENWALD/JOHNSON CREEK

Written by Sheri Campbell

### NEXT MEETING'S INFO:

When: May 8, 6:30 p.m.

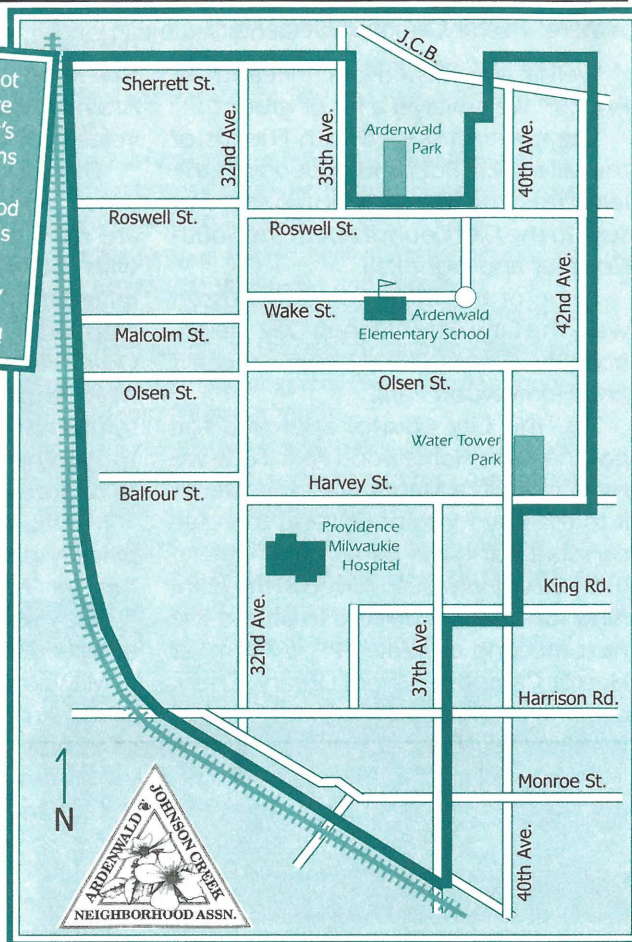
Where: Ardenwald Elementary  
Child Care Provided

As our Neighborhood includes both Portland and Milwaukie residents, a representative from SE Uplift, the Portland support agency, Anne DeVane came to our April meeting and talked about land and transportation issues and community development.

Terry Marthaller is a retired Milwaukie police officer, and he is heading up a Volunteer Project for the police department, asking for neighbor volunteer help in quite a few areas. If you are interested in volunteering, please call the police department, they have a place for you.

Lorelei Young, Crime Prevention Specialist from Clackamas County, reported a Diversity Meeting and potluck at Hillside Manor, and invited us. She also received a grant from our City grant program for a subscription for a Russian newspaper for the Russian population

In the next six issues of the Pilot we are going to provide a more detailed map of one of the City's seven Neighborhood Associations so Milwaukie residents have a better idea of which Neighborhood they live in. So take a look at this map of the Ardenwald/Johnson Creek Neighborhood Association, and if you live within its boundaries, check out a meeting!



in the Neighborhood.

In other assorted business, the Ardenwald School APT announced Family Bingo Night and Art Night as upcoming events. We passed out postcards to Metro Council to provide money to complete the final segment of the Springwater Corridor Trail right here in our Neighborhood down to the Willamette River. We are getting closer to an Entrance Sign on 32nd Avenue near Harrison Street. We are looking at designs and fonts for the lettering.

Next month we are going to have to discuss renewed Light Rail issues here in Milwaukie.

We held our annual Earth Day Cleanup on April 14, 2001, and while it wasn't as packed as last year's, some

30 cars and pickup trucks came by Ardenwald Elementary to unload their scrap metal, lawn debris and junk into the five Dumpsters that were on hand.

Thanks to the volunteers who helped out, and to the members of the school's "Energy Engineers" who served coffee and donuts at the event.

### Approved Neighborhood Grant Projects

- Russian Speaking Multimedia Center, \$250
- Summer Reading Program, \$1,500
- Neighborhood Cleanup, \$600
- Milwaukie Festival Daze, \$200
- Ardenwald Entrance Treatment, \$1,100
- Oral History Project, \$200

## ISLAND STATION

### NEXT MEETING'S INFO:

When: May 8, 6:30 p.m.

Where: Kellogg Treatment Plant

The Island Station Neighborhood Association decided to change the day and venue of their monthly meetings in hopes of encouraging greater participation.

In May the meeting will be held on May 9, at the Kellogg Sewage Treatment

Plant Community Room.

At the May meeting residents will talk about the South Corridor Study, and the fact light rail has been reintroduced as one of the options. This is your opportunity to let your feelings be known and to learn the latest developments.

Residents will also discuss the ODOT project at the intersection of McLoughlin and 22nd Avenue. An engineering firm in Salem is currently designing the project's retaining wall, and once com-

pleted, the project will progress. ODOT officials predict the project will go out to bid this summer.

These are just a couple of the topics the Island Station Neighborhood will discuss; please attend and lend a voice.

### Approved Neighborhood Grant Projects

- Donation to Friends of Milwaukie Pool, \$1,000
- Riding Mower Maintenance, \$100
- Neighborhood Float for Festival Daze, \$1,000
- Donation to the Milwaukie Grange, \$300



# AROUND TOWN

## HECTOR CAMPBELL

Written by David Aschenbrenner, Chair

### NEXT MEETING'S INFO:

When: May 14, 7 p.m.,

Where: Hector Campbell Elementary

Well if you missed our meeting on April 9<sup>th</sup> we covered a lot of ground.

The meeting started with Friends of the Milwaukie Pool and ended with the letter from the NDA Leadership that was sent to the City Council about the South Corridor and Light Rail.

Some of the other topics discussed were the City-wide Cleanup Day, Neighborhood Grants, Storm Water concerns and Homewood Park.

Yes, the City Council approved the park name as Homewood Park. Now we need to build a Master Plan and submit it to the City for approval and then we can start using our park.

If you want to be involved in the planning for the park be sure to attend the next meeting on May 14<sup>th</sup> at 7 p.m. at Hector Campbell School Library. Check out one of the preliminary designs featured to the right.

There are lots of things happening in the City of Milwaukie right now and

your input is needed.

The City is now working on the Budget for 2001-02. Do you have any concerns on how the budget is spent or have any concerns or projects that need funding attention? Attend a budget meeting and voice your concerns.

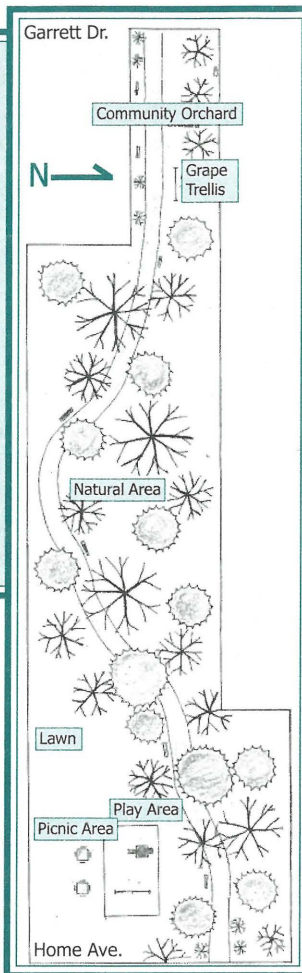
The South Corridor Study's transit options in our region are now taking a new turn with the letter that was submitted from the NDA Leadership after their March 28 Quarterly Meeting and we need your help to shape a transit system that you want. You will hear a lot about transit options and types of systems.

Milwaukie must be a major player in shaping the plans and not just sit back and say, "No we don't want this," or "No we don't want that." We need to step up and say what we do want and figure how it should be designed.

Milwaukie Festival Daze is just around the corner and the committee could use YOUR help even in a small way. There are a lot of things happening in Milwaukie and one small way to be involved and informed is to attend your Neighborhood Association meeting.

This is just one of the preliminary designs for Homewood Park. Another design features two paths, more lawn space, and a covered seating area towards Garrett Drive.

For more information about the proposed park plans, or if you would like to share your opinions about how to best use the available space, call Program Specialist JoAnn Herrigel at (503) 796-7508.



## LAKE ROAD

Written by Teresa Bresaw, Co-Chair

### NEXT MEETING'S INFO:

When: May 17, 7 p.m.

Where: Milwaukie Museum

Creating an urban forest in the Lake Road Neighborhood is presently one of our primary concerns.

In pursuit of this goal, I'm currently trying to obtain an arborist to help our Neighborhood Association pick out the right types of trees for our future tree plantings.

Additionally, the Lake Highland Neighborhood will be planting street trees and Rowe Middle School will need street trees along Lake Road and Shell Lane.

### Approved Neighborhood Grant Projects

- Donation to Friends of Milwaukie Pool, \$1,000
- Donation to Milwaukie Museum, \$500

Another Neighborhood close to 37<sup>th</sup> Avenue and the expressway needs trees to screen the car traffic.

Finally the word has gotten out that there is grant money available for worthy projects and it's gratifying to see there will be actual visual improvements to our Neighborhood. We want to be sure we pick trees that are not only beautiful, but will also be long-living so future generations can enjoy them as much as we do.

In 1990 278,850 people lived in Clackamas County; the 2000 census lists 338,391. This is a 21% increase for the last ten years. Looking at the traffic patterns, especially at peak commute times, makes us realize that many roads are at full capacity and traffic delays are becoming more frequent.

Milwaukie is in the middle and gets a lot of pass-through traffic with its close proximity to the busy Mcloughlin Boulevard, the 205 Freeway, Highway 224,

and Highway 212.

Some people think light rail will alleviate some of the traffic or at least prevent it from getting a lot worse. I'm lucky enough to be able to walk to my job on International Way. I hope as time goes on that people will decide they need to live close to their jobs, so their commute time is minimal.

It seems silly for all of these people to be crossing bridges at peak times when in a lot of cases they would be just as happy either moving to be close to their jobs or changing jobs to be close to their homes.

Some jobs give little flexibility because goods and services have to be delivered, so driving is a way of life for many. But for the vast majority of jobs there are a lot of choices, if people care enough to take a risk. Because of limited space, I'll continue this in the June Pilot.

Stay involved in our community for good things to come!



# AROUND TOWN

## HISTORIC MILWAUKIE

Written by **Ed Zumwalt**, Chair

### NEXT MEETING'S INFO:

When: May 10, 7 p.m. Where: Milwaukie Elementary

Retired Milwaukie Police Officer Terry Marthaller was the featured speaker at our April 12, 2001 meeting, outlining the goals of the Milwaukie Police Volunteer Program. Their aim is to improve livability and provide support to police field and staff personnel.

The program will require a large number of volunteers to perform functions allowing officers to focus on more involved police activities. Training will be provided for this multifaceted program; if interested, please call (503) 786-7414.

Jason Wachs, City Program Specialist, joined us and presented an outline of the new local government education series. This program will be invaluable in familiarizing citizens with a detailed look at the way our City works.

We had a lengthy discussion regarding the recent revival of light rail into Milwaukie, and the consensus was that the Neighborhood Officers' document of March 30, 2001 is a

vital tool to counteract the negative impacts of the rail.

The memorandum summarized the March 28, 2001 Neighborhood Leadership Quarterly Meeting, and requires regional government to act upon the major needs of our community in order to proceed with their plans.

Major requests are as follows:

1. No Transit Center at the old Safeway site; Consider an appropriately sized transfer facility and Park and Ride north of downtown.
2. Route local rail service behind Milwaukie Middle School with connecting buses that serve Milwaukie; donate school building and grounds to the City.
3. Partner with the Oregon Department of Transportation on building the pedestrian underpass and improving McLoughlin Blvd. to provide safer access to our riverfront.
4. No Park and Ride facility at Linwood & Harmony Avenues.
5. No station community planning that increases density or sends light rail into Neighborhoods.
6. Study the I-205 corridor to relieve traffic east of Milwaukie.
7. Carefully consider future connectivity and how extensions of light rail or commuter rail would happen.

The NDA Leadership insisted that all agreements with Metro and Tri-Met be iron-clad, with no chance to alter their promises at a later date.

## Approved Neighborhood Grant Projects

Donation to Friends of the Milwaukie Pool, \$1,100; Donation to the Milwaukie Festival Daze, \$1,000

## LINWOOD

### NEXT MEETING'S INFO:

When: May 24, 7 p.m.

Where: Linwood Elementary

The Linwood Neighborhood took perfect advantage of the Neighborhood Storm Water Improvement Fund when they applied for and received funding that corrected a longtime storm water problem area on Harlene Street.

The drainage improvement project involved three properties, and required extensive shoulder work and the construction of a couple small berms in or-

der to redirect storm water from pooling in one of the neighbor's front yard.

Storm/Sewer Operations Supervisor Jack Perry says the project "was a total success," and that "everyone in that area is completely happy with the project."

If you have an idea for a storm project in your neighborhood, contact your Neighborhood Association or attend the next Neighborhood meeting.



City workers construct some shoulder work to facilitate better drainage in Linwood.

### Lewelling from page 4

quired we are probably looking at 2005 or 2006 before funds can be allocated for this project. However, if the council determines that due to the safety factor involved that this request requires a higher priority these dates could be moved up a year or two. It's yet to be determined what weight the protection of our citizens' commands.

### Lewelling Community Park

Near future development of our Park with existing funds looks very bleak.

To be able to pursue development we must first complete the final design to the tune of \$10,000. Upon completion of the final design we can then begin with the physical development. Wouldn't it be nice to get the park developed and usable without having to wait 3 or 4 years?

The weekend of June 10, 2001 we're planning an enormous parking lot sale with all proceeds dedicated to the park. You can help this become a success by

donating money or sellable goods to this worthwhile project. For more information or donations call Art Ball at (503) 786-4016.

Hope to see you at the next meeting, you could win the \$25.00 door prize!

## Approved Neighborhood Grant Projects

Milwaukie Daze Parade, \$200  
Lewelling Park Final Design Plans, \$4,000  
Meeting Enhancement Fund, \$800





City Events Calendar

May 2001

Sunday	Monday	Tuesday	Wednesday	Thursday	Friday	Saturday
 1 2 3 4 5	MCH - Milwaukie City Hall, 10722 SE Main Street PSB - Public Safety Building, 3200 SE Harrison Street JCB - Public Works Building, 6101 SE Johnson Creek Blvd. MC - Milwaukie Center, 5440 SE Kellogg Creek Drive	6:00pm City Council Regular Session (MCH)	7:00pm Citizens Utility Advisory Board (UCB)  <b>Milwaukie Festival Daze Committee Monolith, 6:30 p.m.</b>	7:00pm Lewelling NDA (Lewelling Elementary)	10:00am Center/Community Advisory Board (MC)	<b>Leading Library Book Drive! Old Safeway Building 10 a.m. - 3 p.m. (story on pg. 4)</b>
6	7	8	9	10	11	12
13	14	15	16	17	18	19
<b>Farmer's Market Season Begins! (story on page 3)</b>	6:30pm Library Board (Library)	7:00pm Parks & Recreation Board (MCH) 6:30pm Planning Commission Regular Session (MCH)	<b>Milwaukie Festival Daze Committee Monolith, 6:30 p.m.</b> <b>Legislators Town Hall Operating Eng. Union Hall, 6:30 p.m. (555 E. 1st Ave., Gladstone)</b>	7:00pm Lake Road NDA (Milwaukie Museum)		<b>DOWN TO EARTH DAY COLLECTION EVENT (story on pg. 2)</b>  <b>Public Safety Open House, Public Safety Building, 6:30 p.m. (story on pg. 3)</b>
20	21	22	23	24	25	26
27	28	29	30	31		

Milwaukie Festival Daze is only a month away! The annual event will be held on June 15, 16, 17. Attend a Committee Meeting on the 2<sup>nd</sup> or 16<sup>th</sup> and get involved!

### NEIGHBORHOOD ASSOCIATION INFORMATION

**ARDENWALD AND JOHNSON CREEK**  
 Meetings held on second Tuesdays  
 6:30 p.m., Ardenwald School  
 Chair, Peter Koonce, 654-4558

**HECTOR CAMPBELL**  
 Meetings held on second Mondays  
 7 p.m., Hector Campbell School  
 Chair, David Aschenbrenner, 654-4258

**HISTORIC MILWAUKIE**  
 Meetings held on second Thursdays  
 7 p.m., Milwaukie Elementary  
 Chair, Ed Zumwalt, 654-2493

**LINWOOD**  
 Meetings held on fourth Thursdays, 7 p.m., Linwood Elementary  
 Acting Chair, Dolly Macken-Hambright, 659-7582

**ISLAND STATION**  
 Meeting will be held on May 9 (trial basis)  
 6:30 p.m., Kellogg Treatment Plant  
 Chair, Rick Farasy, 786-2437

**LAKE ROAD**  
 Meetings held on third Thursdays  
 7 p.m., Milwaukie Museum in April  
 Chair, Teresa Bresaw, 786-4690

**LEWELLING**  
 Meetings held on first Thursdays  
 7 p.m., Lewelling Elementary  
 Chair, Art Ball, 786-4016

### Meeting Broadcast Information:

City Council Work Sessions: Channel 30  
 Tues., Thurs., Sat.: 10 a.m., 2 p.m., 7 p.m., 2 a.m.

City Council Regular Sessions: Channel 30  
 Sun., Mon., Wed., Fri.: 6 a.m., 2 p.m., 7 p.m., 12 a.m.

**And when meetings aren't being rebroadcast, check out the City's Cable Information System**

The City of Milwaukie looks forward to any questions or suggestions you might have. Please drop us a line or give us a call.

Neighborhood Services  
 10722 SE Main Street  
 Milwaukie, Oregon 97222  
 Phone: 786-7503  
 email: wheelerg@ci.milwaukie.or.us

City of Milwaukie  
 10722 SE Main Street  
 Milwaukie, Oregon 97222

Presorted  
 Standard  
 ECRWSS  
 U.S. Postage  
 PAID  
 Gladstone, OR  
 Permit No. 30

# Postal Customer