

## RESOLUTION NO. 11-02

---

### **ADOPTING NEW PARKING METER AND PARKING PERMIT FEES**

**WHEREAS**, Oregon City has adopted ordinance provisions regulating parking in certain areas of the city and authorizing the commission to set fees for parking meters and for parking permits in certain areas; and

**WHEREAS**, the City conducted a study on parking issues in the downtown area, entitled the Downtown Oregon City Parking Study that involved a variety of stakeholders and addressed a variety of issues, and

**WHEREAS**, The Downtown Oregon City Parking Study was accepted by the Oregon City Commission on August 4, 2010, and provided for a number of recommendations to address the availability of private parking facilities, the impact on area businesses, the impact on neighboring residential areas, the demand for employee and public parking and other appropriate factors; and

**WHEREAS**, pursuant to OCMC 10.16.170, the City Commission is authorized to establish appropriate parking permit and meter fees and desires to do so, based on the recommendations of the Downtown Oregon City Parking Study,

### **NOW, THEREFORE, OREGON CITY RESOLVES AS FOLLOWS:**

Section 1. The City hereby establishes the following fees for parking at metered spaces or spaces controlled by pay stations in the zones as shown on the attached maps labeled Zone1-3, which are attached to and made a part of this resolution:

#### **Zone 1 (South Downtown Parking Zone)**

100 cents for 60 minutes;  
50 cents for 30 minutes;  
25 cents for 15 minutes;  
10 cents for 6 minutes;  
5 cents for 3 minutes.

#### **Zone 2 (North Downtown Parking Zone)**

50 cents for 60 minutes;  
25 cents for 30 minutes;  
10 cents for 12 minutes;  
5 cents for 6 minutes.

#### **Zone 3 (Bluff Parking Zone)**

50 cents for 60 minutes;  
25 cents for 30 minutes;  
10 cents for 12 minutes;  
5 cents for 6 minutes.

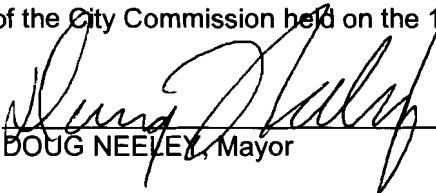
Section 2. The City hereby establishes the following fees for permit parking for the parking zones shown on the attached maps 4-5, attached to and made a part of this resolution:

Parking Permit Zone Fee Range


Brown	\$65 - \$90
Green	\$50 - \$85
Blue	\$60 - \$85
Purple	\$45 - \$75
Red...	\$25 - \$60

Upon adoption of this resolution, the fee shall be set at the lowest figure in the fee range. The City Manager has authority to adjust the permit fees up to the maximum of the fee range based upon his discretion in order to best effectuate the purposes of the Downtown Oregon City Parking Study. In order to adjust the permit fees, the City Manager shall issue an order setting forth the adjusted fees and shall provide a copy to the City Commission at a regularly scheduled commission meeting.

Approved and adopted at a regular meeting of the City Commission held on the 16th day of February 2011.

  
DOUG NEELEY, Mayor

Attested to this 16th day of February 2011,

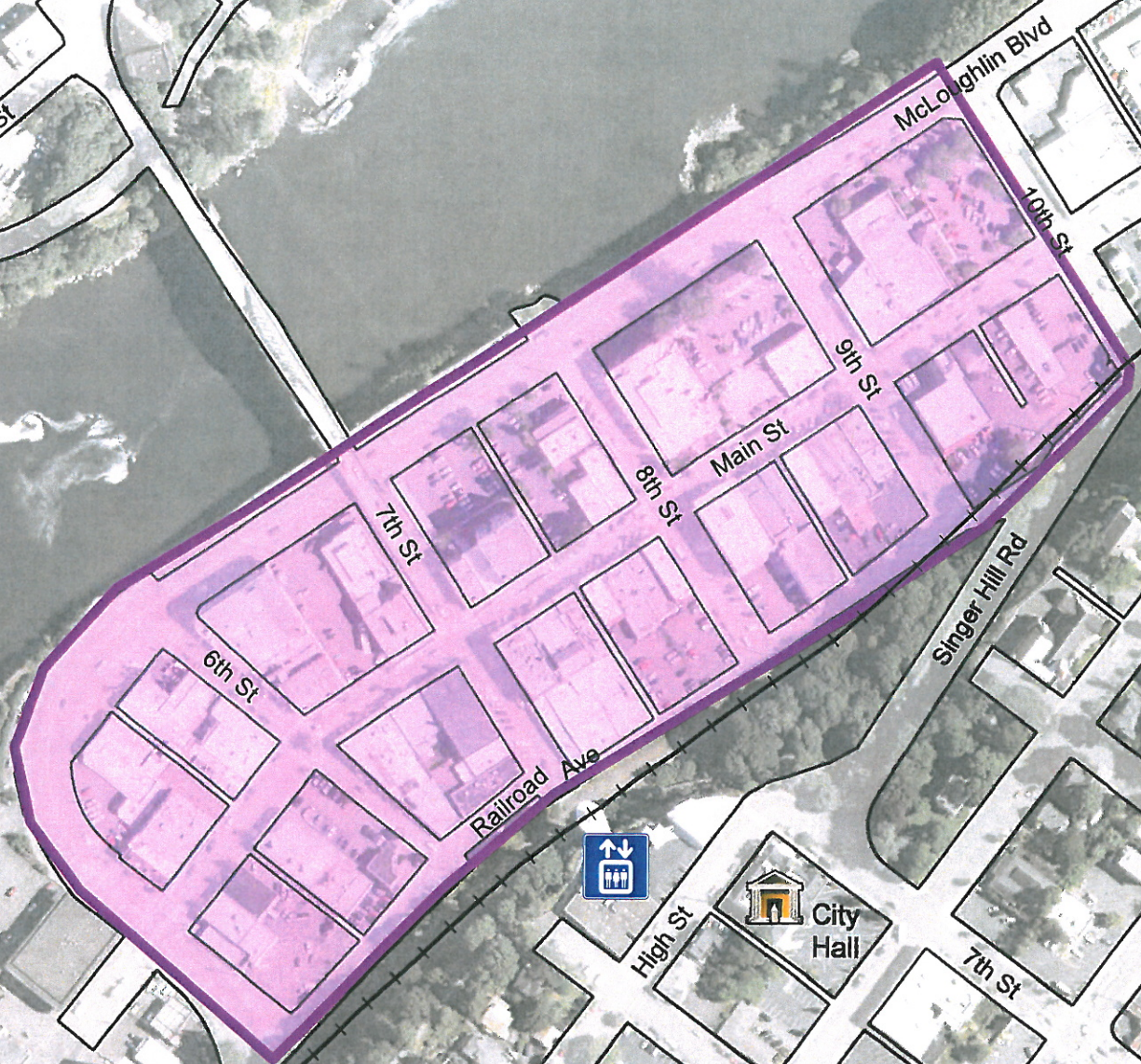
  
Nancy Ide, City Recorder

Approved as to legal sufficiency:

  
City Attorney



# Downtown Parking - Zone 1



City Hall



City of Oregon City  
625 Center St  
Oregon City, OR 97045  
(503) 657-0891  
[www.oregocity.org](http://www.oregocity.org)

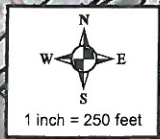
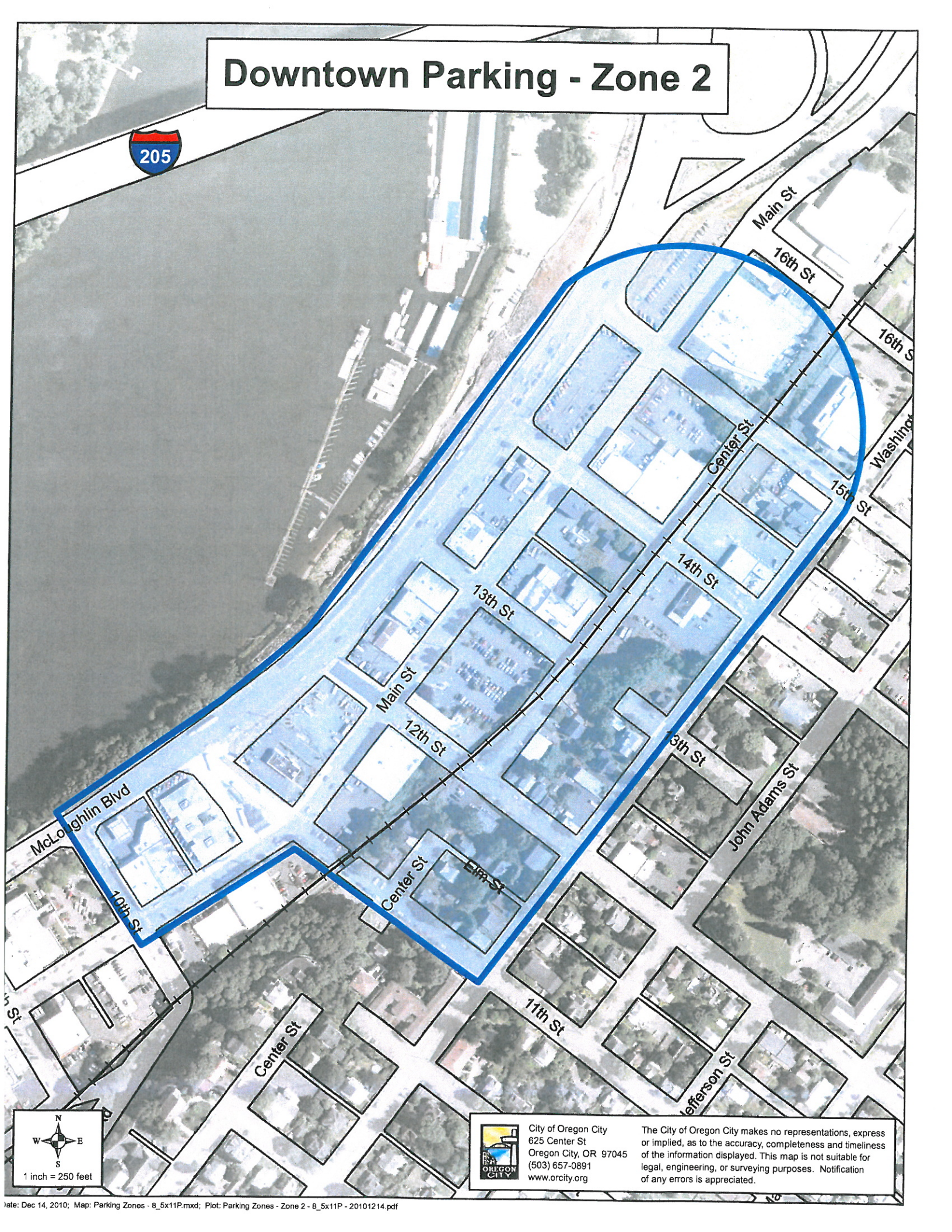
The City of Oregon City makes no representations, express or implied, as to the accuracy, completeness and timeliness of the information displayed. This map is not suitable for legal, engineering, or surveying purposes. Notification of any errors is appreciated.



1 inch = 250 feet



# Downtown Parking - Zone 2

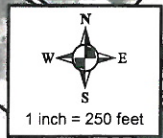



City of Oregon City  
625 Center St  
Oregon City, OR 97045  
(503) 657-0891  
[www.oregoncity.org](http://www.oregoncity.org)

The City of Oregon City makes no representations, express or implied, as to the accuracy, completeness and timeliness of the information displayed. This map is not suitable for legal, engineering, or surveying purposes. Notification of any errors is appreciated.



# Downtown Parking - Bluff Area - Zone 3





City of Oregon City  
625 Center St  
Oregon City, OR 97045  
(503) 657-0891  
[www.oregocity.org](http://www.oregocity.org)

The City of Oregon City makes no representations, express or implied, as to the accuracy, completeness and timeliness of the information displayed. This map is not suitable for legal, engineering, or surveying purposes. Notification of any errors is appreciated.

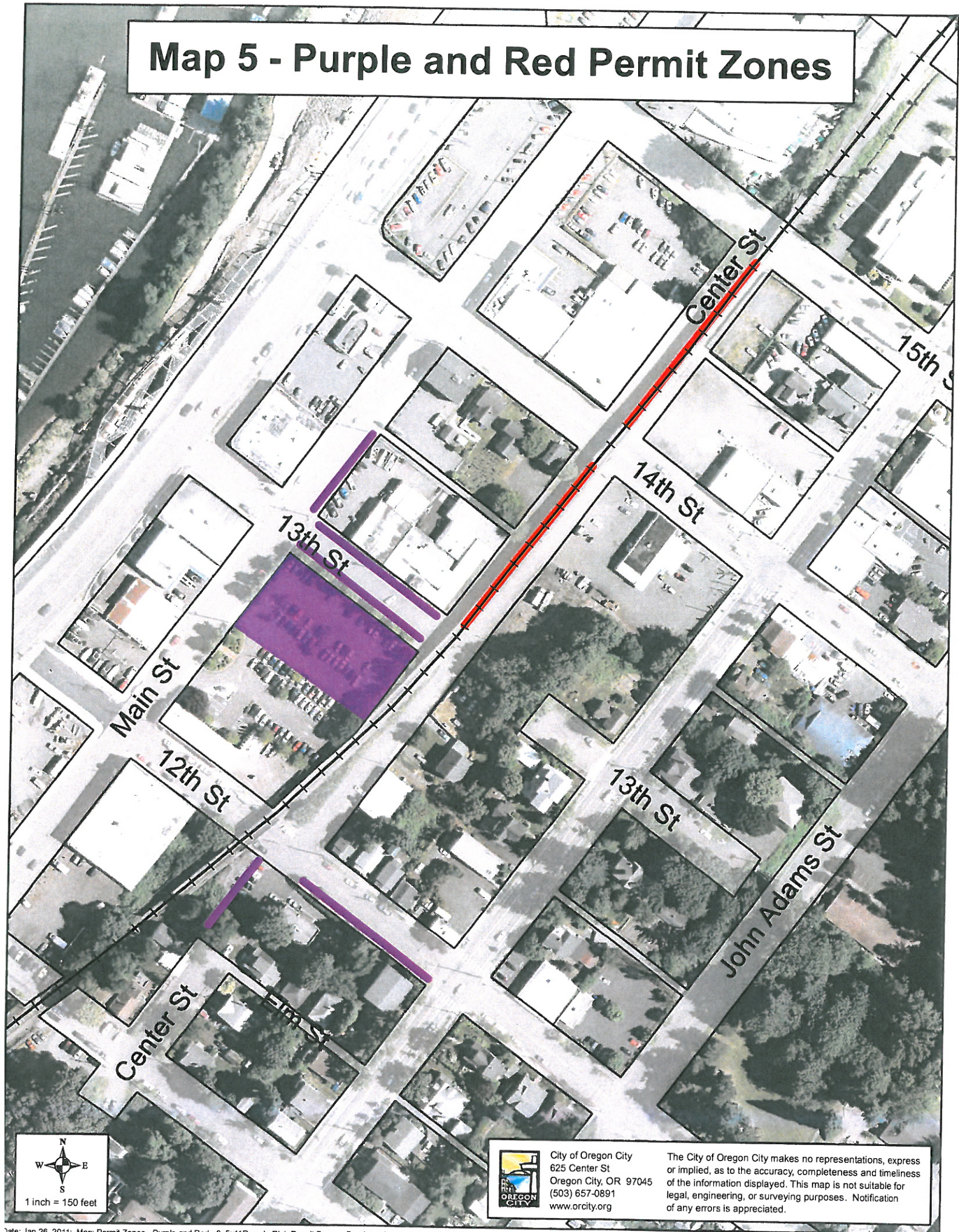


# Map 4 - Blue, Brown and Green Permit Zones





# Map 5 - Purple and Red Permit Zones



City of Oregon City  
625 Center St  
Oregon City, OR 97045  
(503) 657-0891  
[www.orcity.org](http://www.orcity.org)

The City of Oregon City makes no representations, express or implied, as to the accuracy, completeness and timeliness of the information displayed. This map is not suitable for legal, engineering, or surveying purposes. Notification of any errors is appreciated.