



## Milwaukie's Local Leaders

### One of Library's best friends

Carol Kay says she didn't plan on becoming the President of the Friends of the Ledding Library organization last year, but the Library, and the entire community, is really lucky she did.

I've been a member of the Friends since 1995, and by some accident I became President, Carol explained. I was asked to do the booksale, and the next thing I knew, I found myself President.

Just one of the fortuitous results of this accident was one of the most successful book sales ever.

Senior Librarian Joe Sandfort has been at Ledding for more than 20 years, and he says a good book sale typically brings in about \$3,000. This year's sale that was held on June 17 and 18 in conjunction with the Milwaukie Bing Cherry Festival netted more than \$5,000.

Carol handled every aspect of organizing the sale, and says that it was a lot of work, but work that was worthwhile.

For me, the Library is the hub of Milwaukie—an integral part of the community, Carol said. I use the re-



Carol Kay helped bring \$5,000 to the Library

source, so I give back to that resource. I believe in giving (Ledding Library) some of my time.

Carol's time means money and an improved Library.

The money raised by the book sale and accompanying raffle funds a variety of programs and facility improvements. This year's proceeds will purchase an additional Internet workstation, will fund children's and adult programs, and support various touch-up projects around the Library.

Carol is quick to say that it was the work of others that made the sale such a success. She pointed to the efforts of Library staff, local merchants and community members that made the event such a success.

And Carol's already looking to make next year's sale even better. Anyone interested in playing a part is asked to call the Library at 786-7580. ☐

### Transportation Study focuses

The completion of the Alternatives Analysis Phase of the South Corridor Study has been extended until fall of this year.

The decision to lengthen the timeline was made in response to input from citizens and citizen working group members who wanted to understand the technical aspects of each of the traffic alleviating alternatives in detail before selecting a few for study in future environmental analyses. These alternatives will be evaluated over the summer and narrowed for further study in the fall.

Please see **Study** on page 4

### Erosion affects water quality

The quality of Milwaukie's waterways is greatly effected by stormwater that runs off from streets and developed lots.

When storm water runs off of exposed soils it picks up sediments and silt that may eventually be deposited in the City's streams and rivers.

This process is called erosion and sedimentation, and it can adversely affect water quality and damage sensitive stream habitats. Sediment and silt are very efficient carriers of dangerous chemicals like pesticides and soil sterilants, and when such polluted sediment

Please see **Water Quality** on page 4

## INSIDE THIS ISSUE

- 2** A new park is slated for the northern portion of the Riverfront
- 3** Learn what's going on at the Ledding Library and some new facts about the Market
- 8** Calendar of events - Council, Boards and Commissions and Neighborhood Association Meetings

### Boat ramp committee forms

At a work session held on July 10, 2000 the Riverfront Board recommended Council create an ad hoc Boat Ramp Relocation Committee to examine the concerns that have emerged about the Jefferson Boat Ramp as the Downtown and Riverfront Plan has evolved.

The current draft of the Downtown and Riverfront Plan calls for the removal and relocation of the boat ramp.

Council directed the Riverfront Board to recommend members, and develop a charge statement that would govern the new Committee.

Council was expected to approve its members at the July 18, 2000 Regular Session meeting. At the time of print the members were not known.

The Riverfront Board suggested the Boat Ramp Committee consist of seven

Please see **Boat Ramp** on page 4

# Riverfront landscape soon to take improved form

## FROM YOUR COUNCIL

We'll all get a peek into what the future of our Riverfront will look like under the Downtown and Riverfront Plan this September when construction begins on the section of Riverfront Park situated north of the Jefferson Street Boat Ramp, south of Harrison Street and west of McLoughlin Boulevard.

The scope of work originally included reworking the Jefferson Street Boat Ramp, but after citizens raised a number of concerns, the City decided to focus its efforts and resources north of the site until the boat ramp issues have been addressed. (Please see the article about the creation of a Boat Ramp Committee on Page 1 for more details.)

The project will include a complete clearing of the site, a demolition of the existing pathway, and then the installation of a new pathway and lighting system.

A Park Gateway Monument will also be erected, and benches, fountains and

trash receptacles will be placed throughout the park.

What's particularly exciting about this project is that the basic elements featured in the park will be the same elements used throughout the implementation of the Downtown and Riverfront Plan.

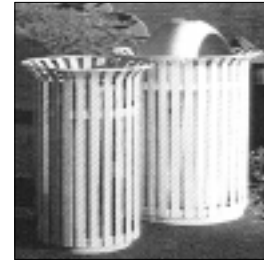
When the park is finished, it will be much easier to envision what may lie ahead.

The pathway system will be designed to link with the proposed network of paths south of the park, the sidewalks on Harrison Street and a future network that would run nearer the Willamette. It has been a long-standing goal of the Riverfront Committee to build a continuous link of pathways throughout Milwaukie.

Construction is projected to begin the third full week of September, and is expected to last until mid to late November. ☐



*Here are some of the design elements that will be implemented in the northern park area. These same elements will be used throughout the Downtown and Riverfront Plan.*



## City Manager introduces Human Resources Asst.

Written by *Dan Bartlett*, City Manager



Last month we took some time to introduce Storm Water Utility Worker Kenny Hill to the residents of Milwaukie.

This month we head over to City Hall and talk with Human Resources Assistant Cynthia Nagy.

Cynthia is a resident of Milwaukie and has been for 12 years. She's worked for the City since 1980.



*Human Resources Assistant Cynthia Nagy*

**Q.** What are your primary responsibilities here at Milwaukie?

**A.** My job, to put it short and sweet, is the employees - from the recruiting/hiring process through termination. In the interim, I maintain all personnel/medical/workers compensation and benefit files for active and inactive personnel.

**Q.** Being in Human Resources, you interact with a lot of nervous people, people who are interviewing for a job, or who are here on their first day. Do you like trying to put people at ease, and how do you try to do that?

**A.** I think that is one of the most important aspects of the job. If I can calm them down and make them more comfortable, they will have a better interview. I let them know as much about the process as possible, give them a few hints about how to go through the interview and answer any of their questions.

**Q.** Has there ever been a situation where the person was so nervous you weren't sure they were going to make it?

**A.** Probably about one third of the candidates.

**Q.** What do you like most about working for the City?

**A.** The recruiting process and orienting a new employee. Everyone is enthusiastic. Of course the down side is rejecting applicants and termination. It is hard to not get personally involved with some of the people.

**Q.** And when you're not working for the City, what do you like to do in your spare time?

**A.** I love working outside on my yard, spending time with my animals, and for anyone that has ever been to my work area, they know that I collect tiger memorabilia. My Christmas tree is all tiger ornaments that I have collected over the years. And I'm also an avid Kevin Costner fan. ☐

# Farmers market more than just a transaction

Brendan Eiswerth, the man behind Milwaukie's Sunday Farmers Market, would like you to know a couple things about the event that has been wildly successful since its inception last summer.

First of all, he'd like you to think of the Market as not only a place where you can buy fresh produce, but as a place where you can meet and socialize with members of your community.

It's really a gathering place for neighbors and family, Brendan said. It's a meeting place, a social event. There's

food vendors, free samples, music. It's more than just a stop along 82nd Avenue where somebody's selling produce out of their trunk.

He'd also like you to know that you would be hard pressed to find fresher produce anywhere in the area.

He explains that the people manning the produce stands at Milwaukie's Farmers Market are typically the farmers that grew the crops from fields in places like Boring, Molalla and Canby.

It's local produce, Brendan said. The corn was picked that morning, the

berries were picked that morning, and you don't have that at your local supermarkets. And because the farmers are right there, you have the opportunity to speak with them and ask them how they're growing their produce.

The Market currently has about 35-40 vendors every Sunday, and Brendan said it's been a trick trying to organize that number in the parking lot across from City Hall on Main Street.

The Farmers Market will run through the month of September and is open every Sunday from 10 a.m. until 2:30. ☐

## News from the Ledding Library

In just two days of work, the Friends of the Ledding Library raised more than \$5,000 at the book sale and raffle that was held in conjunction with the Milwaukie Bing Cherry Festival on June 17 and 18.

The proceeds will fund a variety of Library improvements and programs, including the addition of an Internet computer station, boosting children's programming, and touching up some of the Library's facilities.

.....

Ledding Library is now bringing its books and services to Milwaukie residents who have a difficult time visiting the Library.

Ledding's Homebound Delivery Service will take materials to residents of Milwaukie's various assisted living centers and retirement communities, in addition to private homes. For more information, please call 786-7546.

.....

Winnie the Pooh is swinging through Ledding Library on Aug. 17 at 2 p.m.



for an afternoon of party games and prizes. And for children over 10, Dark Horse Comics will make a presentation explaining how an idea becomes a finished product on Aug. 16 at 2 p.m. ☐

## Mural depicts Milwaukie's past

On July 12, 2000 muralist Larry Kangas and his team of artists unveiled the first of what the Milwaukie Downtown Development Association hopes will be a series of murals in the Downtown area.

The 36 foot long and eight foot high mural located on the south side of Bernard's Garage at the corner of 21st Avenue and Adams Street depicts four distinct periods of Milwaukie's history.

The first panel shows images of Native Americans and covered wagons, the next show scenes from before the turn of the century, the third portrays an image of a streetcar of the 50's and the final frame suggests the current and future influences of technology.

While Kangas was the art-

ist in charge of the mural, he recruited the talents of a number of Milwaukie High School students, some of the students' parents, and even one of the student's grandparents, making the mural a true community and multigenerational effort. ☐



Lois Harris (from left), Rebecca Weston, Bonnie Chasteen, Melissa Boettcher, Lauri Moe-Burgener and Larry Kangas helped bring the mural to life

## Councilors build communities

The time commitment and responsibilities are great, but so are the rewards of being a Milwaukie City Councilor.

Few opportunities exist that allow citizens to have such an incredible impact on their community. This November two positions will be up for election, and now is the time for prospective candidates to begin collecting signatures in order to file their petitions for Council Position #1 and Council Position #3 by August 29, 2000.

Candidates need to be qualified electors, a Milwaukie resident for six months prior to the election, and must turn in petitions with the signatures of 20 qualified Milwaukie electors.

The terms for these positions extends from Jan. 2, 2001, until Dec. 31, 2004.

Filing forms are now available at the City Recorder's Office in City Hall. If you have questions about the election process, please contact City Recorder Pat DuVal at 786-7502. ☐

## Collection site is nearby

If you missed the highly successful household hazardous waste collection event that was held in Milwaukie on June 24, 2000 not to worry.

Theres a facility only six miles away off of Highway 205 near Exit 10 that s open six days a week from 9 a.m. to 4

p.m. The charge for a 35-gallon load (a little more than your garbage can) of materials like pesticides and old paint is only \$5.00. And, if you call Program Services Coordinator JoAnn Herrigel at 786-7508, she ll send you a coupon for \$5.00 that will get you in free! ☐

## Deconstruction better alternative

Recycling is good for the environment, that s no secret, but what might not be as well known is that reusing is an even better alternative.

That s why the City contracted deconstruction services from the ReBuilding Center to dismantle the old Lowry Hotel located at 10961 McLoughlin, just off the Riverfront.

Deconstruction differs from demolition in that every bit of reusable material is extracted from a building before the wrecking ball comes through for the demolition. This way theres less material to demolish and to throw in a landfill, and alternatively, things like fixtures, flooring and windows are simply reused rather than



Workers extract all reusable materials

being trucked to a recycle center, crushed down and then re-fabricated.

At the Lowry, crews carefully removed moldings, doors, cabinets, toilets and tubs for reselling. ☐

## Senior program earns National recognition

The Milwaukie Center s Grandparents Raising Children Program recently earned a National Association of Counties Achievement Award, and for very good reason.

Theres a growing trend in America that has seen a 50% increase over the past 20 years in the number of grandparents that are helping raise their children s children. This phenomena presents new and complex family challenges, and Milwaukie Center s program has been developed to help people meet these challenges.

The group meets monthly, and speakers offer presentations on relevant issues, and grandparents gather to share their experiences.

For more details about Program dates, times and presentation topics, please call the Program s administrator, Cheryl Mally at 653-8100. ☐

### Study from page 1

The South Corridor Transportation Alternatives Study will evaluate several non-light-rail transportation alternatives before narrowing in the fall. The alternatives include Bus Rapid Transit (BRT), High Occupancy Vehicle (HOV) lanes, High Occupancy Toll (HOT) lanes, commuter rail, river transit, and an expanded busway system. Intelligent Transportation Systems (ITS), will be incorporated into several of the alternatives.

For more information or to be added to the South Corridor Study mailing list, call Metros Transportation Hotline at (503) 797-1900, Option 5. You can also visit Metros website at [www.metro-region.org](http://www.metro-region.org). ☐

### Water Quality from page 1

is eroded away by stormwater, it can eventually be carried into Milwaukie s network of rivers and streams. Furthermore, silt and sediment coat creek bottoms which suffocates Salmon and Steelhead eggs and creates clouded and turbid waters which inhibits fishs ability to process oxygen and find food or safety.

For these reasons, the City is currently drafting amendments that will strengthen its erosion control standards.

Current Milwaukie regulations focus on obtaining erosion control plans, rather than identifying specific erosion control standards.

Amendments that are now being drafted prohibit any visible or measurable erosion to take place on a construction site, require developers to obtain erosion control permits in addition to plans, mandate periodic site maintenance and inspections, and would allow permit fee discounts to those who take an erosion control education and training program.

These amendments will go before the Planning Commission and the City Council this fall, and both bodies will provide ample opportunity for public testimony. ☐

### Boat Ramp from page 1

members that represented a variety of stakeholders. Groups that were identified were boat launch users, parks and recreation interests, current and prior riverfront planning committee members, habitat and environmental representatives, downtown business owners and technical advisors from relevant regulatory agencies.

The committee s charge would be to advise the City Council on the feasibility and timing of the possible replacement of the Jefferson Street Boat Launch. As part of this charge the committee will assess the various regulatory conditions imposed by state agencies and the availability of grant funding that s contingent on meeting

these conditions, assess when the ramp is used most and by whom and to review alternative locations for the ramp.

The Riverfront Board recommended that the Committee meet after August of 2000, and that the Committee only meet for three months before reporting its findings to Council. ☐



# AROUND TOWN

This Around Town section gives elected Neighborhood Leaders an opportunity to interpret issues facing their community as well as promote greater neighborhood involvement. As a result of this open forum the opinions presented may not always represent the attitudes of the City or of the author's entire Neighborhood. The PILOT and its participating Neighborhood Officers welcome your feedback. Please see back panel for contact information.

## ISLAND STATION

### NEXT MEETING S INFO:

**When: August 4, 6:30 p.m.**

**Where: Milwaukie Grange**

When a Portland and Western freight train buckled under a structurally corrupt piece of track, derailed and toppled 13 cars off of the rail and into the Island Station Neighborhood on July 8, 2000, it brought a lot of issues residents have had with the rail road to the surface.

These concerns will be raised at the Island Station Neighborhood Meeting scheduled for Friday, Sept. 1 at 6:30 p.m. in the Milwaukie Grange.

Bob Nelbow, the President of the Portland and Western Rail Road, and Claudia Howelf of the Oregon Department of Transportation Rail Safety Division, will address topics such as the strength and integrity of the railroad line, the rate of speed in which trains pass through the Neighborhood, inspection processes, crossing safety mea-

sures and noise pollution.

Island Station Chair Rick Farasy strongly encourages residents to attend this meeting so concerns can be aired and information and possible solutions can be shared.

But prior to this meeting, the Island Station Neighborhood Association will be meeting on August 4, 2000, at 6:30 p.m. in the Milwaukie Grange. Among the priorities for this meeting is to nail down a new slogan for the Neighborhood. Rick says that if residents fail to submit any alternative suggestions, he'll nominate his favorite as the governing slogan: Island Station a great place for a train wreck.

Rick also wanted to send thanks to all that played a role in creating an outstanding presence for the Island Station Neighborhood in last June's Milwaukie Bing Cherry Festival Parade. He especially wanted to thank the children and parents of Oak Grove Elementary, and



Thirteen cars were completely thrown off the track when a Portland Western train derailed.

Ann Phillips of the Milwaukie Pony Prancers for providing the choreography for Island Station's young performers.

And finally, Rick encouraged anyone that's interested in taking part in the next Elk Rock Island clean up event to give him a call at 786-2437. The site has already been Master Planned, and now only needs citizen involvement to get the plan set in motion.

## HISTORIC MILWAUKIE

Written by **Ed Zumwalt**, Historic Milwaukie Chair

### NEXT MEETING S INFO:

**When: Sept. 14, 7 p.m.**

**Where: Milwaukie Elementary**

Now is a good time to make a brief assessment of Milwaukie's future.

With the rezoning of our City core imminent, it is imperative that a few priorities be established from the Neighborhood view.

The forthcoming density of the Downtown area will have a tremendous impact on the Neighborhoods, and whether this impact is good or bad depends upon the actions, or inactions, of several groups.

The City Council, after a long period of pursuing revitalization for Downtown must temper this with an equal amount of zeal for improving Neighborhoods; any imbalance in this area will lead to

deterioration in livability and community spirit.

The Planning Department will be entrusted with the task of setting design standards that will turn our Downtown into a unique gem, distinguishing it from the sameness that characterizes so many small towns. They must also design protection for the Neighborhoods to shield them from the intense traffic pressures resulting from new density. No building should be erected without infrastructure and traffic controls in place to handle the growth.

Finally, the Milwaukie Downtown Development Association should not just relish their forthcoming prosperity. It is time for them to find the maturity and integrity to assume their role as community leaders. More Downtown business owners must participate in the organization before they can be recognized as the true voice of Downtown. The citizens will demand it.

The Historic Milwaukie Neighborhood Association and the Ledding Library present their second season of lunchtime ...

## Concerts In the Park!

Building on the success of last year's Concerts in the Park series Historic Milwaukie and Ledding Library will be bringing acts from around the region to perform **Live Concerts** every **Thursday** from **July 20 until Sept. 21**. Show times start at **Noon**. Come on down to **Scott Park** behind Ledding Library and enjoy the music!



# AROUND TOWN

## LEWELLING

*Written by Art Ball, Lewelling Chair*

### Neighborhood Picnic:

**When: August 5, Noon to 4 p.m.**

**Where: Lewelling Elementary**

### Milwaukie Bing Cherry Parade

What fun! What a good time! The Lewelling Neighborhood Association participated in the Milwaukie Bing Cherry Festival Parade this year for the first time and walked away with three Blue First Place Ribbons.

Included in Lewelling's contribution to the parade there were two floats, the Lewelling Neighborhood Boy Scouts

and Girl Scouts and a number of other residents walking with the kids and floats distributing candy and Mardi-Gras beads.

Many thanks to Jeannie Parkins, who headed up the Neighborhood's Parade Committee and to Carolyn and Howard Britain, Bryce Bain, Linda Clouse, Kathy Bartmess and all the other neighbors who so generously gave of their time to make this event a great success. Many thanks as well to The Glass Shop for their contributions.

### Sidewalk on Logus

Safety of our residents in the community is of great importance to the Lewelling Neighborhood Association and we place it high on our priority list. Logus Road is a very narrow well-traveled road and is a pathway for school children going to and from Seth Lewelling School. In addition to a large volume of vehicle traffic, it is also a Tri-Met bus route. Encroachment in some areas by residents leaves no option for pedestrians other than to walk on the road placing them in danger. This is an accident waiting to happen that the Neighbor-

hood Association is trying to take steps to avoid. At the June meeting residents unanimously voted to take whatever action necessary to get a sidewalk constructed on the south side of Logus Road. The wheels are now in motion and hopefully we will achieve this goal avoiding an accident or serious injury to someone in our community.

### You Can Help

The Seth Lewelling School is looking for volunteers to assist school children in certain areas they may need help in. Teacher Tricia George attended our June meeting and outlined the requirements for the volunteers. If you have a couple of hours a day or even a week you can donate to this worthwhile cause, stop by Lewelling Elementary and sign up. They need you and so do the children.

### Neighborhood Picnic

The Lewelling Neighborhood Association is hosting its third annual Neighborhood Picnic Saturday, August 5 from Noon to 4 p.m. at Seth Lewelling School. There will be food, soft drinks, games and prizes for the kids. Please join us, as it's sure to be a good time and a chance to meet your neighbors.



*Lewelling's Blue Ribbon winning float*

## ARDENWALD/JOHNSON CREEK

*Written by Brain Koonce, Ardenwald/Johnson Creek Chair*

### NEXT MEETING'S INFO:

**When: Sept. 12, 6:30 p.m.**

**Where: Ardenwald Elementary  
Child Care Provided**

We will resume our meetings in Sept. 12, 2000 at Ardenwald Elementary.

Even though we don't meet during the summer, we sure are active. Here is what we're up to, we encourage you to get involved!

Our July Neighborhood Reading Program at Ardenwald Park was a great success. It is just one great example of the good that can be done through the Neighborhood grant program. Under this Neighborhood Grant funded program, we give books to children that participate and adults read to the children to pay back the grant in volunteer effort. It is a great opportunity for the community to get together. Special thanks to Darlene Walsh and Sherri

Campbell for their support of that program.

For August, we have the Concerts in the Park series on every Thursday night throughout the month. The bands are cosponsored by the North Clackamas Parks and Recreation District and will play rain or shine. We invite all City of Milwaukie residents and friends to join us at Ardenwald Park at 36<sup>th</sup> Avenue and Roswell Street to enjoy Thursday evening music in the park. Bands typically begin around 6 p.m. and play for an hour or two.

At our last neighborhood meeting it was decided we would hold our Neighborhood Night Out on Tuesday, Aug. 1 at 6 p.m. We will be using the Lisac's parking lot on 32<sup>nd</sup> Avenue in between Wake and Floss Streets to celebrate the Neighborhood and meet our fellow neighbors by

having a barbecue. We hope to see you there.

I will leave you with this quote from Tom McCall as further encouragement to get involved:

**H**eroes are not giant statues framed against a red sky. They are people who say "This is my community, it is my responsibility to make it better."



*Lillie Moore reads with young Ardenwald residents*

# AROUND TOWN

## LAKE ROAD

Written by *Teresa Bresaw, Lake Road Chair*

### NEXT MEETING S INFO:

**When:** Sept. 14, 7 p.m.

**Where:** Milwaukie Elementary

When you read this our neighborhood barbecue would have already taken place at Century Park, so we'd like to thank Susanna Pai, Kathy Wilke, Rob Kappa, Glorie Totten, Siri Bernard, Ron Silverman, and Debbie Patten for contributing their time to make the event a



The Lake Road float in the Bing Cherry Parade

fun time for all.

ESD (Clackamas Education Service District) has come back with a revised proposal to City Council regarding obtaining permission to convert the old Seventh Day Adventist Church site on Lake Road into an office building. There's more than just one viewpoint on this.

Some feel that an ESD office facility would be a better use of that space rather than having the land revert back to residential lots and additional housing. Others feel that the ESD offices will generate a great deal of traffic and will tax an already overburdened transportation system, and should be somewhat responsible for funding street improvements that will ease this burden.

ESD's revised proposal includes a neighborhood park. The only problem with this is that it would only be two blocks from Century Park, and would therefore fail to meet the need of the majority of neighborhood residents. The City

is aware of what many feel is the ideal location for Lake Road's future park, a plot of available land that is in the middle of two large residential subdivisions and that has good access from both sides. I would like to see the City pursue this parcel rather than the ESD site, as I believe it has superior neighborhood accessibility and is not as near Highway 224, which presents a variety of hazards, especially to children.

If you have opinions about this or any other Neighborhood concern, don't be afraid to let the City know. It takes a simple phone call and leaving a message with a member of your City Council, or going to a public meeting.

I'm also looking forward to our meeting and Open House with the Historic Milwaukie Neighborhood at Milwaukie Elementary on Sept. 14, 2000 at 7 p.m. We plan on getting several members of our City Staff to attend, and it should be a fun and informative meeting. More on that later. Hope everyone is having a good summer.

## LINWOOD

Written by *Dolly Macken-Hambright, Chair*

### NEXT MEETING S INFO:

**When:** Sept. 28, 7 p.m.

**Where:** Linwood Elementary

Edmund Burke said, "All that is necessary for the triumph of evil is that good men do nothing."

This statement was made during Revolutionary War times but still holds true today. People, busy with their children, work and personal interests, must take the time to involve themselves in the business of governmental operations, and issues affecting the community and their neighborhoods. Without people's involvement, things tend to go awry and our government becomes an unwieldy bureaucracy without user friendly direction, and does not necessarily look to the best interests of the public in general.

We are the power of our government if we choose to be. That is what a democracy is supposed to be about. We pay the bill, and opt whether to get involved in how our dollars are spent or

not. If you leave governmental affairs up to someone else and don't at least voice your opinion, by voting, attending meetings, etc., you have no one to blame but yourself when you help pay for the \$1,500 nail, the murderer who serves only two years, or when the building permit you want is not allowed because your zoning was changed and you were unaware of the change.

I cannot urge folks enough to get involved at some level in the affairs of the government. Our Neighborhood Associations are a prime way to find out what is going on, where your area of expertise may be applied for the greater good, and who is actually holding the reins of our lives and our wallets. Yes, it takes time, but there is little that is more important in the long run than preserving our community for ourselves, and generations that follow. To a high degree, we are where we live.

The Linwood Neighborhood Association will again be meeting Sept. 28, 7 p.m. at the Linwood School Library. The agenda will include a lot of information on issues that have come up during our summer hiatus. Hope to see you there!

## Reconnecting the Community

A Regional Conference for  
Neighbors

Saturday, September 16<sup>th</sup>, 2000  
9 a.m. to 4:30 p.m.

Hudson's Bay High School  
Vancouver, Washington

This conference is designed to increase effective citizen involvement, information sharing, neighborhood organizing, meeting dynamics, and neighborhood planning.

It is free to any citizen interested in Community, Neighborhoods and their City.

For more information contact Michelle Gregory, Neighborhood Services Manager, 786-7539.

## HECTOR CAMPBELL

### NEXT MEETING S INFO:

**When:** August 14, 8 p.m. (tentative)


**Where:** Not yet known at the time of print

The Hector Campbell Neighborhood Association is tentatively planning to meet on August 14, at 8 p.m. The place was not known at the time of print. Please call Chair Chris Ortalano for details.



## City Events Calendar

August 2000

| Sunday  | Monday   | Tuesday  | Wednesday  | Thursday  | Friday  | Saturday  |
|---|--|--|--|-----------|---|---|
| <br><b>Farmers Market</b><br>10 a.m. to 2:30 p.m.<br>Across from City Hall<br><b>6</b> | MCH - Milwaukie City Hall, 10722 SE Main Street<br>PSB - Public Safety Building, 3200 SE Harrison Street<br>JCB - Public Works Building, 6101 SE Johnson Creek Blvd.<br>MC - Milwaukie Center, 5440 SE Kellogg Creek Drive<br><b>7</b> | <b>National Night Out and Summer Celebrations</b><br>Ardenwald/Johnson Creek (Ardenwald Park), 6p.m.<br>Historic Milwaukie, Milwaukie Jr. High, 6 p.m.<br>Island Station, Grange, 6 p.m.<br><b>1</b> | City Council will hold its Regular Session meeting at Island Station's celebration<br><b>2</b> | <b>3</b>  | 6:30pm Island Station NDA (Grange Hall)<br><b>4</b>       | <b>Lewelling Neighborhood Summer Celebration</b><br>Noon to 4 p.m.<br>Seth Lewelling School<br><b>5</b> |
| <b>Farmers Market</b><br>10 a.m. to 2:30 p.m.<br>Across from City Hall<br><b>6</b>  | 6:30pm City Council Work Session (MCH)<br>7:00pm Traffic Safety Board (PSB)<br><b>7</b>  | 6:30pm Planning Commission Regular Session (MCH)<br><b>8</b>   | 7:00pm Citizens Utility Advisory Board (JCB)<br><b>9</b>                                       | <b>10</b> | 10:00am Center/Community Advisory Board (MC)<br><b>11</b> | <b>12</b>   |
| <b>Farmers Market</b><br>10 a.m. to 2:30 p.m.<br>Across from City Hall<br><b>13</b>   | 6:00pm City Council Discussion Session, Work Session (MCH)<br>6:30pm Riverfront Board (MCH)<br>8:00pm Hector Campbell NDA, H.C. Elementary (tentative)<br><b>14</b>  | <b>15</b>  | Noon MDDA Board<br><b>16</b>   | <b>17</b> | <b>18</b>   | <b>19</b>   |
| <b>Farmers Market</b><br>10 a.m. to 2:30 p.m.<br>Across from City Hall<br><b>20</b>   | <b>21</b>  | 6:00pm City Council Regular Session (MCH)<br><b>22</b>   | <b>23</b>  | <b>24</b> | <b>25</b>   | <b>26</b>   |
| <b>Farmers Market</b><br>10 a.m. to 2:30 p.m.<br>Across from City Hall<br><b>27</b>   | 6:30pm Library Board (Library)<br>7:00pm Parks & Recreation Board (MCH)<br><b>28</b>   | <b>29</b>  | <b>30</b>  | <b>31</b> |   |   |

## NEIGHBORHOOD ASSOCIATION INFORMATION

## ARDENWALD AND JOHNSON CREEK

Meetings held on second Tuesdays  
 6:30 p.m., Ardenwald School

Chair, **Peter Koonce, 654-4558**

## HECTOR CAMPBELL

Meetings held on second Mondays  
 8 p.m., Hector Campbell School

Chair, **Chris Ortolano, 353-3000**

## HISTORIC MILWAUKIE

Meetings held on second Thursdays  
 7 p.m., Milwaukie Elementary

Chair, **Ed Zumwalt, 654-2493**

## LINWOOD

Meetings held on fourth Thursdays, 7 p.m., Linwood Elementary  
 Acting Chair, **Dolly Macken-Hambright, 659-7582**

## ISLAND STATION

Meetings held on first Fridays  
 6:30 p.m., Grange Hall

Chair, **Rick Farasy, 283-4003**

## LAKE ROAD

Meetings held on third Thursdays  
 7 p.m., Rowe Middle School

Chair, **Teresa Bresaw, 786-4690**

## LEWELLING

Meetings held on first Thursdays  
 7 p.m., Lewelling Elementary

Chair, **Art Ball, 786-4016**

**Please Note:** Some Neighborhood Associations do not meet over the summer, consult the calendar above and the Around Town section to see when your Neighborhood's next meeting is scheduled.

## Meeting Broadcast Information:

City Council Work Sessions: Channel 30  
 Tues., Thurs., Sat.: 10 a.m., 2 p.m., 7 p.m., 2 a.m.

City Council Regular Sessions: Channel 30  
 Sun., Mon., Wed., Fri.: 6 a.m., 2 p.m., 7 p.m., 12 a.m.

Budget Committee Meetings: Channel 33  
 Fri., 4 p.m., 10 p.m.; Sat., 9 a.m., 4 p.m., 11 p.m.; Sun., 12:30 p.m., 3:30 p.m., 9 p.m.

The City of Milwaukie looks forward to any questions or suggestions you might have. Please drop us a line or give us a call.



**Neighborhood Services**  
 10722 SE Main Street  
 Milwaukie, Oregon 97222  
 Phone: 786-7503

email: [wheeler@ci.milwaukie.or.us](mailto:wheeler@ci.milwaukie.or.us)



City of Milwaukie  
 10722 SE Main Street  
 Milwaukie, Oregon 97222

Bulk Rate  
 ECRWSS  
 U.S. Postage  
 PAID  
 Gladstone, OR  
 Permit No. 30

Postal Customer