



## Budget committee approves next Budget

In addition to approving a proposed budget of \$37.6 million for the 2001-02 fiscal year, the Budget Committee suggested City Council develop an ongoing role for the citizen members that make up the Budget Committee.

The Budget Committee is comprised of the five City Councilors, and five citizens. Council is expected to adopt the Budget at its June 19, 2001 regularly scheduled meeting.

This Citizen Budget/Service Review Committee would meet on a quarterly basis to monitor and review the imple-

Please see **Budget** on page 4

## South Corridor Study will narrow options

On June 5, 2001 the South Corridor Transportation Study Policy Group will meet at Metro at 7:30 a.m. to consider which transportation alternatives will be studied further in a Draft Environmental Impact Statement (DEIS).

According to Milwaukie City Councilor Brian Newman, Milwaukie's representative on the Policy Group, it is expected that Light Rail from Portland to Milwaukie, Light Rail from the Gateway area to the Clackamas Regional Center, Bus Rapid Transit, and Busways will be forwarded for a DEIS.

Please see **Study** on page 4

## Manager search progresses

According to Bob Murray, the consultant leading the City's search for its next City Manager, Council will likely extend an offer to the candidate of their choice by the end of June.

Council was scheduled to meet with Murray and Associates on May 22 to pare down the number of 39 candidates. At the time of print it was not known how many advanced to the second round, but it was predicted to be between five and eight.

Murray expects that number to be reduced to two or three soon after Council interviews the candidates on June 1, 2001, and the final offer to follow before the end of the month. ☐

### INSIDE THIS ISSUE

- 2** Learn three good reasons to conserve water; take advantage of CPR classes; and catch the RecMobile
- 4** Meet your police officer liaison; and hit the Ledding Library's annual book sale
- 8** Calendar of events - Council, Boards and Commissions and Neighborhood Meetings

### Milwaukie's Local Leaders

## Pitching in

Roberto Rodriguez said his participation in Milwaukie's SOLV IT cleanup project was the first time he's ever participated in an organized event.

But it certainly was not the first time he's been involved with helping out those around him.

"In Mexico, I used to help people, support people," Roberto said. "I was a general contractor, and there was always a little bit of need, so I would spend a lot of time fixing this and fixing that for people."

Roberto wanted to continue his tradition of helping others here in the States, so when he saw a SOLV IT commercial on television, he called the number and learned of Milwaukie's project to cleanup the Spring Water Corridor Trail.

Stop Oregon Litter and Vandalism (SOLV) is an organization that coordinates statewide volunteer projects, and SOLV IT was a project that more than 3,500 volunteers participated in.

"I like to participate in the community as much as possible," Roberto said. "At the cleanup, I got to be con-



Roberto Rodriguez has only lived in Milwaukie for three months but was anxious to get involved.

nected with people and talked to a lot of interesting people who were from different ages and ethnic backgrounds."

Jason Wachs, Milwaukie's Program Specialist who organized Milwaukie's SOLV IT project, said Roberto was one of the hardest working of the 47 volunteers who participated in the April 21, 2001 event.

"He really stepped up and helped by driving around in the truck and picking up the heaviest debris," Jason said.

All told, Milwaukie's volunteers collected more than 90 bags of trash over four hours, and removed abandoned appliances and some 30 tires from the mile-stretch of trail. ☐

## Three good reasons to conserve

There are three good reasons why Milwaukie residents might want to be a bit more mindful of how much water they use this summer season.

1. Money can be saved on water, utility bills, sewer and septic costs, and on state and local taxes.
2. Energy can be saved by reducing the amount of hot water used and by saving electricity used to pump water.
3. The environment can be preserved by helping ease the burden on water storage, purification, distribution and

treatment facilities.

Here are just a few things that can be done around the house to conserve water:

- Use low-flow shower heads
- Check all faucets for leaks and fix drips promptly
- Do only full loads of laundry
- Use a pail or basin instead of running water for household cleaning projects

For more tips call (503) 786-7503. ☐

## Legislator Open House finale

State Senator Verne Duncan and State Representatives Carolyn Tomei and Kathy Lowe will meet with their local constituency at a Town Hall Meeting on June 23 from 10 a.m. to noon at the Oregon City Pioneer Community Center (615 5<sup>th</sup> Street).

The June Town Hall is the final meeting of the legislator's six-part series.

The lawmakers will listen to constituent concerns, discuss recent events in Salem, and answer questions about their legislative priorities. For more information call (503) 986-1425. ☐

## Scott Park receives some care

Members of Milwaukie Rotary organized a park cleanup day at Scott Park in downtown Milwaukie on Saturday, April 21, 2001. Participants from Milwaukie Rotary, Clackamas County Fire No. 1 and Cub Scout Pack 513 scoured the park for trash.

The volunteers used two boats to float the two ponds for debris, and the more than 30 participants filled half a Dumpster with trash, including 10 tires. ☐



North Clackamas Fire District No. 1 lent a boat to the effort to help fish garbage out of the pond.

## Join studio committee

The City would like to form an ad hoc advisory committee to guide policy and programs related to the new Public Access studio.

If you have an interest in Public Access programming (Channel 23) in Milwaukie and would like to be a member of this committee, please call JoAnn Herrigel at (503) 786-7508.

The first task for this committee will be the review of proposals submitted to the City in June for operation of the studio. Please call today! ☐

## CPR classes available

Every month Clackamas County Fire District No. 1 provides classes that teach lifesaving skills.

On the third Thursday of every month from 6 to 9 p.m. the Fire District teaches CPR classes focusing on infant, child and adult resuscitation. The June class will be held on the 21<sup>st</sup>, and those interested are encouraged to register promptly, as each class has only a dozen spots that typically fill up every month.

Classes cost \$10 and are held in the Fire Station at 15990 SE 13<sup>th</sup> Avenue in Clackamas. Call (503) 655-8537 to register or for more information. ☐

## RecMobile on the move

The North Clackamas Park's District "RecMobile" will visit Milwaukie parks this summer, and like years past, the van will be packed with tons of games and crafts.

On Mondays the RecMobile and Parks staff will visit Milwaukie Middle School (2300 SE Harrison) from 10 a.m. to noon, and Century Park (11500 SE 35<sup>th</sup> Ave.) from 1 to 3 p.m.

On Wednesdays look for the crew at Furnberg Park (6850 SE Furnberg) from 10 a.m. to noon, and then at North Clackamas Park (5440 SE Kellogg Creek Drive) from 1 to 3 p.m.

And on Fridays the RecMobile will be at Water Tower Park (9890 SE Roth Ave.) from 10 a.m. to noon and at Ardenwald Park (3667 SE Roswell St.) from 1 to 3 p.m. ☐



## Festival Daze action-packed

This year's Milwaukie Festival Daze will have a little bit of something for everyone: an Elvis impersonator, performing pigs, carnival rides, music, craft and food vendors, a climbing rock, a dunk tank, and the opening of Milwaukie Pool.

Beginning Friday, June 15 and continuing through Sunday, June 16, there will be tons of activity and entertainment for the entire family.

The parade will begin at 10 a.m. on Saturday, and the route will start at Rowe Jr. High on Lake Road and extend through downtown on Main Street. The carnival, food vendors and beer garden will be open all three days, and there will be live music on Friday and Satur-

day night. And from noon to 5 p.m. the Milwaukie Pool will open for the season.

On Sunday Milwaukie High's thespians will perform in Scott Park at 3 p.m., a talent show will be held from 3 to 6 p.m., a Show and Shine car show and the Farmer's Market will be held and Valentine's Performing Pigs will perform two half-hour shows.

For more information, please call (503) 786-7503. ☐



## Historic Milwaukie houses rescued and moved

Two historic homes scheduled for demolition to make way for additional student parking for the Milwaukie High School expansion project were rescued at

the last minute when buyers came forward and agreed to pick up and move the homes.

The houses stood side by side on the north side of the High School on Washington Street. Now the house to the right is placed on 3845 Jefferson Street, and the house to the left stands on a piece of property at the corner of 21<sup>st</sup> Avenue and Adams Street.

The house on Jefferson will be used as a residence, and at the time of print, it was unclear what the future held for the



The house on Jefferson Street

house at 21<sup>st</sup> and Adams. The owner of the house was leasing the piece of property from the railroad, and was negotiating buying a portion of the property. For more information, please call (503) 786-7503. ☐



The house at 21<sup>st</sup> Ave. and Adams St.

## What makes the City of Milwaukie tick?

The City of Milwaukie is developing a series of classes to help citizens, City staff, and elected and appointed officials learn more about their local government.

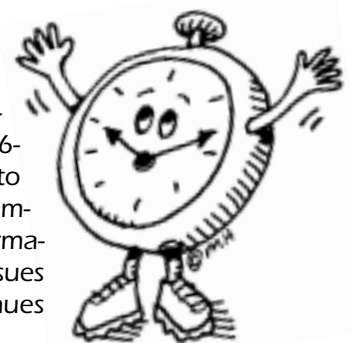
It will likely consist of two days of classes taught by each City department with the first series being offered in the Fall of 2001. The classes will include in-class lectures and exercises as well as demonstrations and field trips.

It will be a great way for you to learn about your City and meet the people who are working to provide you with your City services.

We're trying to get an idea of who would be interested in

participating and we'd like to reserve space for you in the classes.

Please contact Program Specialist Jason Wachs at (503) 786-7568 for more information or to reserve your space in the upcoming classes. More detailed information will be featured in future issues of the *Pilot* as the series continues to take its form. ☐





# Citizens discuss design guidelines for downtown

A handful of Milwaukie citizens attended a May 10, 2001 Design and Landmarks Commission Workshop to help determine how our Downtown and Riverfront should evolve.

"We gathered a lot of decent input about the character and personality of Milwaukie," Associate Planner Ken Kent said. "We jotted down a lot of points, things like 'small town feel,' 'river community,' and 'home town.' It was a good start, we recorded a lot of information we can give to our consultants who will put it in the form of design guidelines."

The guidelines will help define the aesthetics of any new Downtown development, and will help implement the Downtown & Riverfront Plan. A draft of the guidelines will be reviewed at the Design and Landmarks Commission's next meeting on June 27, 2001, and another Workshop is tentatively scheduled for July 25, 2001.

At this Workshop citizens will have the opportunity to examine the design guidelines and offer recommendations. For more information please call Ken at (503) 786-7653. ☐

## Attend Ledding's Book Sale

Head to Ledding Library's Book Sale at the old Safeway site on June 15, 16, 17 and find some great buys and help your local library at the very same time.

Books new and old, CD's, sheet music, vinyl records, pottery and ceramics will all be for sale, and all of the proceeds will benefit the Ledding Library. With last year's \$5,600, the library purchased several Internet stations, helped boost the children's program, and financed the ongoing Arts & Libraries Program.

A raffle will also be held to help raise money. A television and a variety of gift certificates from local businesses will be up for grabs.



Proceeds from last year's sale helped fund Ledding's Childrens Program

If you have some items you would like to donate for the sale, contributions can be brought to the Library until June 12, 2001. All donations are tax-deductible. ☐

## Code violations on the rise

Unfortunately, as the summer's temperatures rise, so do the number of code compliance infractions that occur within the City.

As Code Compliance Coordinator Steven Campbell explains it, the growing season brings more calls about tall and overgrown vegetation. Grass should not grow in excess of eight inches and blackberry bushes should be trimmed away from property lines and the public right of way.

Steven also says numbers are on the rise for debris and abandoned vehicles on private property, and vacant and abandoned houses. If you see what you think might be an example of any of these nuisances, call Steven at (503) 786-7545. ☐

## Meet your Neighborhood's police officer

In last month's *Pilot* we discussed the Police Department's move to Geo-Based Policing, an approach centered on developing greater accountability, familiarity and comfort between police and residents by assigning a pair of officers to each Neighborhood Association.

The officers are available to the residents of their assigned Neighborhood 24 hours, 7 days a week.

If you have a concern you would like to discuss with your assigned officer, attend a monthly Neighborhood Association meeting, or call (503) 786-7400 and ask for the officer by name. Meeting information is listed on page 8.

Here's a list of the officer assignments:

**Ardenwald/Johnson Creek**

Kevin Krebs and Floyd Marl  
Hector Campbell

**Bruce Litchfield and Robbie Graves**  
**Historic Milwaukie**

Tony Cereghino and John Truong

**Island Station**

Ron Glenn and Luke Strait

**Lewelling**

Matt Gilbert and Cheryl Dornon

**Linwood**

Larry Giddings and Uli Neitch ☐

### Budget from page 1

mentation of the budget and the Capital Improvement Plan, as well as review the City's services to find ways they can be provided more efficiently.

This committee would also consider long-range funding issues, rather than solely focusing on the upcoming fiscal year, and would examine alternative funding sources. ☐

### Design from page 1

The DEIS is a highly detailed analysis that will go a long way in determining which option will best meet the transportation needs of the South Corridor. While the statements aren't projected to be completed for about a year, outreach efforts will be held regularly to report findings and present design options for public consideration. ☐

# AROUND TOWN

The Around Town section gives elected Neighborhood Leaders an opportunity to interpret issues facing their community as well as promote greater neighborhood involvement. As a result of this open forum the opinions presented may not always represent the attitudes of the City or of the author's entire Neighborhood. The Pilot and its participating Neighborhood Officers welcome your feedback. Please see page 8 for contact information.

## HECTOR CAMPBELL

Written by **David Aschenbrenner**, Chair

### NEXT MEETING'S INFO:

When: June 11, 7 p.m., Where: Hector Campbell Elementary

**LIGHT RAIL!** Do those words and the concept of a mass transit line bring up old concerns? Well the Milwaukie Neighborhood Chairs have been working long and hard to address the concerns of the citizens of Milwaukie as plans go forward on the South Corridor Transit study. Metro, Tri-Met and the other regional partners are getting ready to study the best way to move people through the South Corridor to Portland.

There are several options that might go on for further study. They include: a Light Rail line from Portland to Milwaukie Downtown then bus service to Clackamas Town Center, a bus way from Portland to Clackamas, or a light rail line that shadows the route of Interstate 205.

There will be more chances to provide your input. I would like to thank all the Neighborhood Chairs for their hard work and forward thinking on these issues.

At our next meeting we are hoping to have Steven Campbell, the City's Code Compliance Coordinator, in to speak on code issues, and please remember the Milwaukie Sunday Farmers Market is open in Downtown Milwaukie each Sunday.

The City will be installing a stop sign on Monroe at Oak Street. This is just east of the railroad crossing and will affect traffic heading west on Monroe.

The Neighbors at the May meeting approved Grants for the Lewelling Neighborhood Park in the amount of \$2,000 and for Homewood Park in the amount of \$1,000.



**The Hector Campbell Neighborhood**

In the next five issues of the Pilot we are going to provide a more detailed map of one of the City's seven Neighborhood Associations so Milwaukie residents have a better idea of which Neighborhood they live in. So take a look at this map of the Hector Campbell Neighborhood, and if you live within its boundaries, check out a meeting! Next month will take a closer look at the Historic Milwaukie Neighborhood.

## ISLAND STATION

### NEXT MEETING'S INFO:

When: June 21, 6:30 p.m.

Where: Milwaukie Grange

A number of topics were addressed at Island Station's May Meeting.

Milwaukie Information Specialist Grady Wheeler reported the City has received design drawings for the project at McLoughlin and 22<sup>nd</sup> Avenue but the City Engineer, Brion Barnett, is seeking more detailed information and has some reservations the plans might not go far enough in slowing down the traffic exiting McLoughlin and entering the Neighborhood.

Neighborhood Services Manager Michelle Gregory explained that the vacant property at 21<sup>st</sup> and Wren Street is actually comprised of three different lots and there are generally four options for its future: subdividing the property and selling the pieces in an effort to recoup the City's costs, knocking down the house and creating a green space, selling the property to the private sector, or because it is three different lots, doing a combination of the options.

Rick handed out the 14 points the Neighborhood Leadership had drawn up at their last Quarterly Meeting addressing the possibility of Light Rail entering Milwaukie. Rick discussed the

basic content of the document, especially the point addressing circumferential rail, which would directly impact the Island Station Neighborhood. Rick wanted to make sure the Neighborhood had a chance to review the points before he endorsed the document on the Neighborhood's behalf.

Finally, the Island Station membership decided to meet on the third Thursday of every month at 6:30 p.m. at the Milwaukie Grange.

## LINWOOD

### NEXT MEETING'S INFO:

When: June 28, 7 p.m.

Where: Linwood Elementary

# AROUND TOWN

## ARDENWALD/JOHNSON CREEK

Written by **Peter Koonce**, Chair

### NEXT MEETING'S INFO:

When: June 12, 6:30 p.m.

Where: Ardenwald Elementary  
Child Care Provided

The Ardenwald-Johnson Creek Neighborhood's annual Earth Day Cleanup was held on April 14, 2001, and more than 70 residents came by the Elementary School to deposit their scrap metal, lawn debris, and household junk into the eight Dumpsters provided through the Neighborhood Association.

One bin was dedicated for metal, three for yard debris, and four for gar-



A young Ardenwald resident pitches in.

bage. By the end of the event, most were more than half-full. Those who came by for the first hours of the collection event were met by Ardenwald's "Energy Engineers," a group of especially environmentally-minded students who treated event-goers to hot coffee and donuts.

The Energy Engineers and those who made donations when dropping off their junk raised more than \$200 for the Elementary School.

Ardenwald Chair Peter Koonce said the event was a success, although turnout was lower than what the Neighborhood has experienced in recent years.

"I thought the event went well, we were well prepared this year and had more volunteers than we have had in the past," Peter said. "It's a great event that helps cleanup the Neighborhood and provides a service to the community."

Peter extended thanks on behalf of the Neighborhood Association to the Energy Engineers, the volunteers who worked the event (Sherri Campbell, Berle Palmer, Doug Bourquein, Lilly Moore, Debra Deane, and others), and to all who made donations.



Students provided coffee and donuts.

As you may have heard, our May meeting was cancelled due to the construction at Ardenwald School. We will resume our meetings June 12<sup>th</sup>.

A few things have happened since our last message but none are as important as the topic of transportation.

Figuring out how to protect our City and accommodate regional traffic is the biggest issue facing us today. The City and its Neighborhood leaders are working with Tri-Met, Metro, and Clackamas County to determine what transportation options would work best for Milwaukie. There are several issues that we are grappling with that will influence the City and our Neighborhood.

I encourage you to keep informed by attending our next meeting.

## LAKE ROAD

Written by **Teresa Bresaw**, Co-Chair

### NEXT MEETING'S INFO:

When: NOT UNTIL SEPTEMBER

Where:

We enjoyed our April meeting at the Milwaukie Museum, but it will not be our usual meeting place as the *Pilot* stated previously in error.

One topic that people need to stay involved with is our transportation issues for our area.

If you don't, there's a good possibility decisions will be made without your input. Some of these decisions you may not agree with and because you didn't take the time to voice your opinion, you can't really complain about the results.

People in government are willing to listen, and want to know what you think. Phone calls, letters, open meetings are some of the ways to voice your

opinions.

Portland is number eight on the list in the country for heaviest traffic during peak hours. The average time spent sitting in traffic is about three hours monthly. That doesn't include actual driving time, which is much higher.

I value my time and would rather be gardening than driving in heavy traffic. Because my job at GE Capital/JC Penney will be ending July 27<sup>th</sup> due to the entire office being closed, I will have to find another part-time job that is close to home. Ideally a fair number of jobs and homes should exist in close proximity so commute time is minimal.

In Clark County (Washington) an estimated one-third of the work force (59,000 people) drives to Oregon for their jobs. Their housing costs attracted permanent residents. Near Ridgefield and La Center industrial land is being open for development, so hopefully the

disparity between jobs and homes will decrease as time goes on.

Near the Columbia River in Oregon (South Columbia Shore) development is going on which will provide more jobs.

We need to be planning now for the best way to commute to these jobs and others. In downtown Portland condos are being built to provide housing choices for the workers.

In Clackamas County the population is increasing quicker than jobs, particularly east of I-205 and around Oregon City.

Because of this we will continue to have traffic congestion. Milwaukie is sandwiched between this growing population and their needed jobs.

What can Milwaukie do to keep this congestion off of Neighborhood streets and how can we invigorate our City and provide more jobs for its residents? More on this later.



# AROUND TOWN

## LEWELLING

Written by **Amy Hough**, Secretary

### NEXT MEETING'S INFO:

When: June 7, 7 p.m.; Where: Lewelling Elementary

### Lewelling Community Park Financing

A big thank you goes to the Lake Road and Hector Campbell Neighborhood Associations for contributing \$4,000 and \$2,000 respectively, toward the completion of the Final Plans of our Lewelling Community Park. Once the plans are approved and finalized, we can start developing our Park.

### Milwaukie Daze

The Lewelling Neighborhood received three blue ribbons for our outstanding float last year. But due to the busy summer schedules, and lack of volunteer time, we will regretfully not be entering a float this year. The money we were given to help with the costs of doing so will be donated to the Milwaukie Festival Daze Committee.

### Welcome to Neighborhood Signs

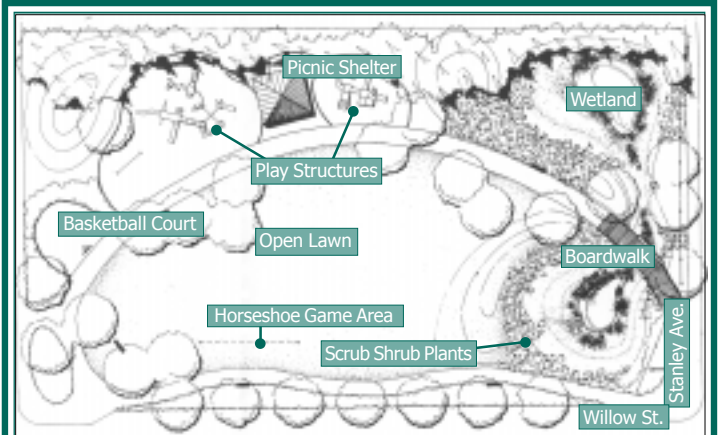
We're currently waiting for Public Works to meet us about signs being placed on-top of existing street signs. We believe this would provide the least amount of maintenance and sign pollution.

### South Corridor

Mayor James Bernard provided the Lewelling residents with an update on what the NDA's have accomplished by meeting with the major stakeholders in the South Corridor Transportation Study. City delegations comprised of City Councilors, Staff, and Neighborhood Leaders met with Metro, Tri-Met, the School District and the City of Portland.

### Neighborhood Picnic

We agreed on Saturday, August 4 at Lewelling School. Further detail to be discussed at our next meeting.



Citing it as a perfect model of neighbors coming together to pursue a common goal, City Council rewarded the Lewelling Neighborhood's extraordinary efforts to develop a park at Stanley Avenue and Willow Street with \$5,000 in seed money to help push the park towards completion.

With the \$5,000 from Council, the \$10,000 in Neighborhood Grant Money obtained with the help of significant contributions made by the Lake Road and Hector Campbell Neighborhood Association, the Lewelling Neighborhood will have about enough money to fund the construction plan that needs to be submitted to the City's Planning Commission. The construction plan provides all of the technical information needed to go ahead with the actual construction.

Not resting for a single second, the Lewelling Neighborhood Association is holding a Rummage Sale and Raffle at Lewelling Elementary School on June 9, 10 to raise money that will fund the parks construction. A brand-new custom-made bunk bed will be raffled off, and everything from bicycles to fishing poles will be for sale.

## HISTORIC MILWAUKIE

Written by **Ed Zumwalt**, Chair

### NEXT MEETING'S INFO:

When: June 14, 7 p.m.

Where: Milwaukie Elementary

At our May meeting we were honored to host officers of the other Neighborhood Associations to discuss plans and strategies to further our aims in the South Corridor Transit Study.

It is important for everyone to remember, especially the elected officials in the region, that when the Neighborhood Chairs united in their efforts to present

a comprehensive list of requirements that would permit further transit into our City, we were very serious.

In previous years transit options for our City were not options - they were commandments issued from upon high, with absolutely no consideration for the devastating impact they would have on our City as a whole and the Neighborhoods in particular.

Unfortunately, over the years many of our City officials have been so enamored with the regional governments' insatiable appetite for density that they have virtually handed us over to those who look at transit and population not as a problem to be solved with logic and an eye to livability, but as an opportunity to foist upon us their own skewed version of quasi-religious urbanism.

Their philosophy is based on the as-

sumption that we should live, work and play in the same area, and if we have to go somewhere else: Take transit! Remember Orwell's '1984'?

How many times do we have to repeat this: "They want Manhattan, we want Mayberry."

Our views on transit are the first step in protecting our City from forced density. Slow, planned growth will result in a beautiful, vibrant small City, and livability will be our reward.

If one needs a refresher on the ills of over-densification, take a quick trip to Portland's NW 23<sup>rd</sup> area, or 39<sup>th</sup> at Hawthorne or Belmont.

We must understand that, as citizens, we are the primary caretakers of our City, and it is our innate responsibility to make it a better place, all the while remembering our rich history.

Historic Milwaukie's  
Concerts in the Park Series  
begins June 20<sup>th</sup> in  
Scott Park, @ noon!

## City Events Calendar

June 2001

Sunday	Monday	Tuesday	Wednesday	Thursday	Friday	Saturday
	MCH - Milwaukie City Hall, 10722 SE Main Street PSB - Public Safety Building, 3200 SE Harrison Street JCB - Public Works Building, 6101 SE Johnson Creek Blvd. MC - Milwaukie Center, 5440 SE Kellogg Creek Drive				<b>Council Work Session Interviewing City Manager Candidates</b> (Time and place not determined at time of print. Phone (503) 786-7502 for more information.)	
<b>The Milwaukie Farmer's Market Across From City Hall 10 a.m.</b>	6:30pm City Council Work Session, (MCH)	6:00pm City Council Regular Session (MCH) 7:30am South Corridor Policy Group (Metro)	7:00pm Citizens Utility Advisory Board (JCB)	7:00pm Lewelling NDA (Lewelling Elementary)	10:00am Center/Community Advisory Board (MC)	<b>Lewelling Raffle and Rummage Sale Lewelling Elementary (see page 7)</b>
<b>The Milwaukie Farmer's Market Across From City Hall 10 a.m. Lewelling Raffle and Rummage Sale Lewelling Elem. (see page 7)</b>	7:00pm Hector Campbell, H.C. Elementary 6:00pm Transportation Safety Board, (JCB)	6:30pm Planning Commission Regular Session (MCH) 6:30pm Ardenwald/Johnson Creek, Ardenwald Elementary	Noon MDDA Board 5:30pm McLoughlin Project Open House, St. John's Episcopal Church	7:00pm Historic Milwaukie NDA (Milwaukie Elementary)		<b>Check Page 3 for more information!</b>
	6:30pm City Council Work Session, (MCH)	6:00pm City Council Regular Session - <b>Possible Budget Adoption</b> (MCH)	<b>Concerts in the Park Series Begins! Scott Park Noon</b>	6:30pm Island Station NDA (Grange)		<b>Legislator Town Hall Series Oregon City Pioneer City (615 5th Street) 10 a.m.</b>
<b>The Milwaukie Farmer's Market Across From City Hall 10 a.m.</b>	6:30pm Library Board (Library)	7:00pm Parks & Recreation Board (MCH)	6:00pm Design and Landmarks Commission, (MCH) <b>Concerts in the Park Scott Park Noon</b>	7:00pm Linwood NDA (Linwood Elementary) 6pm Open House & Fair and Free Family Swim, Aquatic Park		

## NEIGHBORHOOD ASSOCIATION INFORMATION

## ARDENWALD AND JOHNSON CREEK

Meetings held on second Tuesdays

6:30 p.m., Ardenwald School

Chair, Peter Koonce, 654-4558

## HECTOR CAMPBELL

Meetings held on second Mondays

7 p.m., Hector Campbell School

Chair, David Aschenbrenner, 654-4258

## HISTORIC MILWAUKIE

Meetings held on second Thursdays

7 p.m., Milwaukie Elementary

Chair, Ed Zumwalt, 654-2493

## LINWOOD

Meetings held on fourth Thursdays, 7 p.m., Linwood Elementary

Acting Chair, Dolly Macken-Hambricht, 659-7582

## ISLAND STATION

Meetings now held on third Thursdays

6:30 p.m., the Milwaukie Grange

Chair, Rick Farasy, 786-2437

## LAKE ROAD

No meeting until September

7 p.m., Milwaukie Museum in April

Chair, Teresa Bresaw, 786-4690

## LEWELLING

Meetings held on first Thursdays

7 p.m., Lewelling Elementary

Chair, Art Ball, 786-4016

**NEW!**

## Meeting Broadcast Information:

City Council Work Sessions: Channel 30  
Tues., Thurs., Sat.: 10 a.m., 2 p.m., 7 p.m., 2 a.m.City Council Regular Sessions: Channel 30  
Sun., Mon., Wed., Fri.: 6 a.m., 2 p.m., 7 p.m., 12 a.m.

And when meetings aren't being rebroadcast, check out the City's Cable Information System

The City of Milwaukie looks forward to any questions or suggestions you might have. Please drop us a line or give us a call.

Neighborhood Services

10722 SE Main Street

Milwaukie, Oregon 97222

Phone: 786-7503

email: wheeler@ci.milwaukie.or.us



City of Milwaukie  
10722 SE Main Street  
Milwaukie, Oregon 97222

Presorted  
Standard  
ECRWSS  
U.S. Postage  
PAID  
Gladstone, OR  
Permit No. 30

Postal Customer