



2 Councilor Hedges: 'Citizens make this City great.'

3 Ain't No Party Like a Toddler Dance Party!

5 A tip that could save you \$450!

## Council calls up Bridge decision

At its Regular Session on Jan. 3<sup>rd</sup>, City Council will open a public hearing to review Planning Commission's decision to approve the Portland-Milwaukie Light Rail bridge that will span Kellogg Lake and McLoughlin Boulevard.

The appeal is expected to focus on the proposal to remove the white oak tree in Kronberg Park to allow for construction of the bridge.

Written comments may be submitted before the hearing and all are invited to attend and provide

PLEASE SEE **BRIDGE APPEAL** ON PAGE 2

### • MILWAUKIE'S LOCAL LEADERS •

#### *Hard work pays*

Whitney Welches proves hard work pays off. Last year she chaired the Milwaukie Relay for Life event - the 24-hour walking event that raises money for cancer research - and it drew more than twice as many teams as the year before and raised more than \$50,000.

Her efforts garnered the American Cancer Society's "Pace Setter Award" and the "Explosive Growth Award." This year she's aiming for 35 teams, and to raise \$65,000.

Whitney has been involved with Relay for Life the past 10 years, since she was 15-years-old, when cancer claimed the life of her mother.

"It made me who I am and it brought me to The Relay," Whitney said. "And I love The Relay. It's a way to make it not so horrible. There are all sorts of emotions you go through at The Relay."

The kick-off event for the 2012 Relay for Life event will be held at the Milwaukie Elk's Lodge (13121 SE McLoughlin) on Friday, Jan. 27<sup>th</sup>, at 6 p.m. Anyone interested in participating on a team, or pulling one together, is invited to attend.

"There will be lots of food and music, an obstacle course for kids," Whitney said. "We make people feel very welcome."

For more information, call Whitney at (503) 939-9720 or visit [www.relayforlife.org/milwaukieor](http://www.relayforlife.org/milwaukieor)



## Special Baseball meeting on Jan. 9<sup>th</sup>

Milwaukie City Council will decide whether or not to continue the effort of bringing professional baseball to town at a special meeting on Monday, Jan. 9<sup>th</sup> at 7 p.m. in City Hall's Council Chambers.

Council will consider public testimony and a presentation reporting the findings of the first phase of the communication effort and the results of a site feasibility analysis before making its decision.

The project has been broken into four phases to provide Council different intervals to move the effort forward, or to shut it down. The decision of Jan. 9<sup>th</sup> will be to enter the second phase of the project, which would focus on the programming, design, cost and economic impact of the multi-use facility.

"Building a stadium here in Milwaukie is an idea that creates a lot of reaction, and we've heard from a lot of people we haven't heard from in the past," Mayor Jeremy Ferguson explained. "Now's the time to decide if we're going to take the next step."

The topic was originally to be taken up at the Dec. 20, 2011 Council Meeting, but Council

PLEASE SEE **BASEBALL** ON PAGE 2

## Library Director ready to begin new chapter

Katie Newell picked up everything and moved across the country to start a new chapter in her life as the new Director of Ledding Library on Jan. 4<sup>th</sup>.

For the past seven years, Katie was the Director of the New Castle Public Library in New Castle, Delaware. During her tenure she led a \$6.5 million renovation and expansion project that took the library from 8,000 sq. ft. to 22,000 sq. ft.

She hopes to lead a similar successful expansion effort in Milwaukie.

Katie said she was drawn to the Ledding Library because of its standing in the community.

"The City seems so supportive of the Library," Katie said. "It seems very important to the City, and I need that, because to me, libraries are so important."

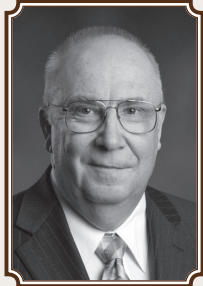
Katie is familiar with the Northwest - her sister has lived in Beaverton for 18 years.

"My brother and I used to always tell my sister, 'We're going to move out here.' Katie said. "He's mad at me because I'm doing it."



## Joe tells me to “Be Nice”

This month's Councilor Column is written by Councilor Dave Hedges. To contact Greg, call (503) 786-7512 or send him an e-mail at [hedgesd@ci.milwaukie.or.us](mailto:hedgesd@ci.milwaukie.or.us).



As my first year on City Council ends my overwhelming impression of what makes Milwaukie the great place to live that it is, is its citizens. Not that I didn't know that already but it can stand repeating.

There are seven neighborhood associations led by dedicated people who give a lot of their time to organize concerts, film nights, help build parks, community gardens and make sure Council is aware of the issues of concern to the community. If you haven't been to your neighborhood association meetings, make a resolution to attend at least one in 2012; you'll know a lot more of what goes on and new perspective is always welcome.

There are the people who serve on the boards and commissions which help to run the City. They really make a difference and the work they do is greatly appreciated. But like City Council they are term limited, and for some their terms end this year. They will be hard to replace, some hopefully will serve on another board, while some will “retire”, our thanks to all of you.

MUST is a group of people who work in many ways to improve Milwaukie, and have as one of its goals the banning of single use plastics bags. You know that really does make sense, no matter the slight inconvenience to ourselves.

To all of you who make Milwaukie the City it is, not least our staff who keep the City running and safe, may 2012 be a better year than the last, and two words which mean a lot: thank you.

Finally, to my fellow Councilors, especially Joe Loomis who tells me to be nice, I'd like to promise that in 2012 I'll be less outspoken, more diplomatic and less controversial, but I can't. Happy New Year everyone.

### BASEBALL FROM PAGE 1

thought it best to hold it until after the holidays. However, when Council appealed the light rail bridge application, the agendas for the regularly scheduled January meetings got crowded.

“We want to give this topic its due,” Ferguson said. “We need to have a meeting dedicated to baseball so we can learn more about this proposal, give citizens another chance to tell us what they think, and make the right decision.”

## City wins Finance Award

Milwaukie's Finance Department received the Distinguished Budget Presentation Award for its Fiscal Year 2012 Budget from the Government Finance Officers Association of the United States and Canada on Dec. 13<sup>th</sup>.

The City completely reformatted its Fiscal Year 2012 Budget to make it more accessible, informative, and easier to read. Performance measures and department goals were added, the overall fund structure was reduced from 29 to 8 individual funds, and the layout and presentation was overhauled.

“Winning this award validates a lot of hard work put in by the Finance team and the City Departments,” Finance Director Casey Camors said. “Special thanks to the City Councilors and the citizen members of the Budget Committee.”

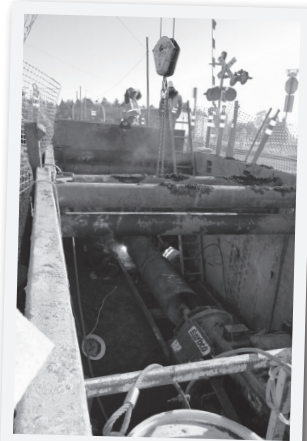
The budget document can be viewed on the City's website, under the Finance Department.

## City features Harrison Street project web page

In November the City began a waterline replacement project on Harrison Street from Campbell Street, just west of the railroad crossing, to 42<sup>nd</sup> Avenue.

Because this project will effect a number of businesses and residents, and a lot of motorists, the City has posted a project page on its homepage so people can reference the work that's been completed in previous weeks and to get a sense of the work that's planned for the coming week.

The page will be updated every Friday through construction, which is projected through January 2012.



### BRIDGE APPEAL FROM PAGE 1

verbal comment. Due to the specific rules for this type of appeal hearing, new evidence will not be allowed. However, new testimony and arguments about the evidence that was presented to the Planning Commission will be allowed. City Council will evaluate the evidence and testimony that was presented to the Planning Commission as well as new testimony and arguments.

The City Council decision will be the City's final decision on the proposal, but parties with standing may appeal this decision to the Oregon Land Use Board of Appeals (LUBA).

Those who submit comments or sign in at any of the public hearings related to the application will have standing to appeal the decision to LUBA.





## The Milwaukie Authors' Quarterly

THURS. JAN. 19<sup>TH</sup>, 6:30 P.M.  
THE LEDDING LIBRARY

thirty minutes of authors speaking ... thirty minutes of Q and A ...  
thirty minutes of 1 on 1 conversations

**MARY ANGELINE BELL - OREGON CITY**

Triumphs I&II

61 poems and 5 short stories.

**BOB BRESKY - OREGON CITY**

Tales From The Trips:

How I Grew To Be A Father

An award winning photographer and writer.

**JONATHAN STEWART - SANDY**

PILGRIMAGE TO THE EDGE - The Pacific Crest  
Trail and the U.S. Forest Service

Follow author Jonathan Stewart's four-year  
odyssey hiking the Pacific Crest Trail.

## Toddler Dance Party III!

*"Aint no party like a Toddler Dance Party because  
a Toddler Dance Party don't stop!"*

The Leding Library is hosting its third "Toddler Dance Party" on Thurs., Jan. 26<sup>th</sup>, at 10:30 a.m.

Come bop,  
dance and  
sing with your  
toddler to some  
of the children's  
library's favorite  
songs. The party  
is for toddlers  
ages 1-3 and  
their dancing  
caregivers.



## City focusing on emergency preparedness

The City is putting added emphasis on emergency preparedness - reaching out to local businesses and schools to explore the possibility of establishing a network of shelters and gathering places residents can walk to should a major incident occur, department heads and other key employees are taking trainings on the Incident Command System, and the City Manager has been meeting

regularly with the leaders of the local Citizen Emergency Response Team.

The Incident Command System is a nationally established protocol that clearly establishes roles and responsibilities for managing everything from a City event, like Milwaukie Daze, to a flood or earthquake.

"We have a responsibility to protect our residents," City Manager Bill Monahan

said. "We're investing in resources and training to be better prepared should a disaster strike."

### HELPFUL PREPAREDNESS LINKS

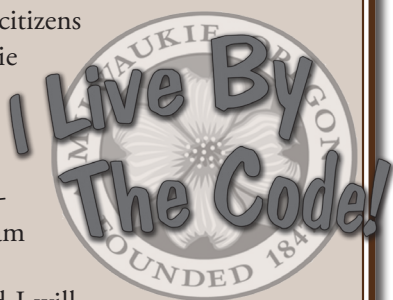
- [www.ci.milwaukie.or.us/police/disaster-preparedness](http://www.ci.milwaukie.or.us/police/disaster-preparedness)
- [www.redcross.org/](http://www.redcross.org/)
- [www.ready.gov/winter](http://www.ready.gov/winter)
- [www.emergency.cdc.gov/disasters/winter](http://www.emergency.cdc.gov/disasters/winter)

## The City Code Corner

Written by Tim Salyers, Code Compliance Coordinator

In an effort to recognize citizens who follow the Milwaukie Municipal Code, and to encourage others to do the same, the "I Live By The Code - Code Compliance Certification" program has been developed.

Citizens can call me and I will assess your property for code violations. If you comply with a list of about 17 codes you are entered into a drawing to win a prize. For full details on this new and exciting program please visit our web page.



## The Chief's Corner

Written by Bob Jordan, Chief of Police

One of the most common crimes in the City is referred to as the "car prowl" or "car clout". A car prowl is generally characterized as the burglary of your vehicle while it is unoccupied, typically at night. Laptop computers, portable GPS devices, pocketbooks and briefcases are favorites of car prowlers as these items can be re-sold or pawned, are easily concealed and transportable, and are valuable. In order to deter this type of crime:

- Always lock your car when leaving it unattended
- Never leave valuables in "plain sight"
- If possible, park your car in a locked garage
- If parked in your driveway, leave a light on at night or at least a light with a motion detector

**E**ach Neighborhood Association has a Land Use Chair monitoring applications the City receives. To help track the review process, this space announces upcoming Land Use/Development

Review hearings. Dates are subject to change. Check the City's website for the most current information.

- Appeal Hearing on the light rail bridge Jan. 3, at City Council
- Public Hearing on the Water Master Plan Jan. 17, at City Council

## LEWELLING

### NEXT MEETING INFORMATION:

WEDNESDAY, JAN. 11<sup>TH</sup>, 7 P.M., LEWELLING ELEM.

WRITTEN BY PEPI ANDERSON, CHAIR

What an amazing year! Lots of activities in the City and a lot going on in the Lewelling Neighborhood. We are now entering a new year with so many prospects for our residents.

We will soon see development of the crosswalk at Stanley and Willow thanks to the Walk Safely Milwaukie Program (WSMP). We have shared a portion of our education money from the WSMP with three of our schools greatly in need of new safety equipment for their crossing guards.

We are developing plans with our Lewelling principal and PTO Chair for provisions for our own students for emergency situations. We have enhanced safety through speed monitors on Stanley. We had a marvelous music in the park program drawing folks from all over the City and beyond.

The Winter Solstice event in December was so very successful and on behalf of the Lewelling Neighborhood, thanks to the volunteers who shared their time. We were able to raise some money to continue our earmarked projects. Now that was a great event in general with many in attendance and a blessing of perfect weather! A genuine expression of friends, families and neighborhood community!

So what does the New Year bring? Renewal and new hope. A lot more opportunities and we can always use more volunteer time and energy. Sometimes that energy alone can spark new ideas, a fresh approach to situations that need solutions.

## ISLAND STATION

### NEXT MEETING INFORMATION: *Special Time!*

MONDAY, JAN. 9<sup>TH</sup>, 5:30 P.M., LEWELLING ELEM.

WRITTEN BY DANIEL PLATTER, RESIDENT

I was asked to comment on the City's Heritage trees in this space. Many will mourn the loss of three, 100 year old Sequoias, and the stately Douglas firs along the Trolley Trail for "trail safety." Additional planned removals include an old growth Oak for "bridge construction staging" in Kronberg Park, a huge Oregon Ash on the sewer plant property for "power pole construction" and now possibly the large Redwood in our Riverfront Park "for plaza construction." Each tree is more important than the project calling for its removal! Tree canopy is what gives the visitor her first impression of a City, and the long-term resident her sense of peace.

Most of our Heritage trees are over 100 years old, of more noble

## The 2011 Umbrella Parade & Winter Solstice Events!



PHOTO BY ERIC GRISWOLD



species selection (enduring, expansive, and rare), and typically more interesting than modern plantings. This is because people practiced silviculture for shade, beauty, flowering, fall color, and as "Specimens of Interest." Hence the champion Walnuts, Sequoias, Redwoods, Chestnuts, Catalpas, and ancient Oaks gracing Milwaukie's Neighborhoods. Modern plantings tend to have different criteria: won't crack pavement, stay small, and don't fruit.

Unfortunately, though succeeding in being short-lived, meager, and shallow-rooted, they still harm pavement. These cheap shrubs don't yield the value that our heritage trees do, and certainly don't evoke the same emotions of well-being, affluence and health. When you see red maples and Bradford pears in every parking lot in America you have to be thankful you live in Milwaukie!

Please be vigilant and help defend our great trees.



## HECTOR CAMPBELL

### NEXT MEETING INFORMATION:

**NO MEETING IN JANUARY (BASEBALL MEETING CONFLICT)**  
MARY WEAVER, GOCHAIR

Thanks to all the neighbors who decorated homes and yards for the holidays. Not everyone can or chooses to decorate, but to those who do, we appreciate your efforts to share a bit of warmth, color, and cheer with us.

The Home Avenue pathway is completed and is now open for walkers' use on the east side of Home Avenue between Hunter Court and Wilma Circle. The path was funded by Walk Safely Milwaukie Program funds and the Hector Campbell NDA in December 2011.

You may have noticed that after Hector Campbell School closed last summer, all of the school zone signs on surrounding streets were removed. Please remember that on school days, children still walk to and from the school grounds for school bus transportation.

Reminders: A Homewood Park work party is scheduled for Jan 14<sup>th</sup>. Contact [Sarah@thegardensmith.com](mailto:Sarah@thegardensmith.com) or (503) 653-0015 if you would like to help now or in the future.

NCSD has approved our Campbell School Neighborhood Garden. If you would like to be on our list of people interested in this project, please contact Sarah at the email or number above. Those in our Neighborhood will have first priority for the 28 lots in the garden.

## HISTORIC MILWAUKIE

### NEXT MEETING INFORMATION:

**NO MEETING IN JANUARY (BASEBALL MEETING CONFLICT)**  
WRITTEN BY DION SHEPPARD

Baseball and saving the giant oak on Kronberg Park were the hot topics for our December meeting. As we all know, there are many unanswered questions, pros and cons, about the baseball project currently being considered for our community. Our NDA voted to send a letter with a summary of questions to the City Council requesting that an informational meeting be held soon before proceeding to the next phase of the study.

We also discussed the large Oregon White oak tree on Kronberg Park. The removal of the oak is part of Trimet's construction plan for the light rail bridge across Kellogg Lake to McLoughlin. During the recent Planning Commission hearing, an arborist testified that the tree is in a serious state of decline and is currently slated for removal. Another arborist report was obtained by residents of Island Station and Historic Milwaukie. The new report stated the tree is in good condition and should be saved. It gives renewed hope that we should continue our efforts to save the tree.

## → ARDENWALD/JOHNSON CREEK ←

### NEXT MEETING INFORMATION:

**TUESDAY, JAN. 10<sup>TH</sup>, ARDENWALD ELEM., 6:30 P.M.**  
WRITTEN BY BRYAN DORR, SECRETARY

Happy New Year and welcome to 2012! We hope you all had a safe and great time through the holidays. If you made it to our holiday potluck, thank you for stopping by and bringing something to share. The Neighborhood Association wants to thank Portland commissioner Amanda Fritz and Milwaukie councilor Dave Hedges for attending the potluck (Our Neighborhood is also within the Portland city limits).

The Christmas Families program was successful again this year. We selected two anonymous families this year to receive the gifts and donated the gifts before Christmas. We thank all the donors for their gifts, the volunteers for helping out with the wrapping and delivery, and to resident Lisa Gunion-Rinker for leading the program.

It is back to business as usual at our next Neighborhood meeting. Please visit our website and subscribe to our email list at [www.Ardenwald.org](http://www.Ardenwald.org) to receive meeting agendas, minutes, and Neighborhood news.

Friends of Tideman Johnson Park are on winter break for January, so the next work party is Sat., Feb. 4<sup>th</sup> from 9 a.m. to noon at Tideman Johnson Park. Work tools and refreshments are provided, and volunteers of all ages are welcome to show up and help.

## LAKE ROAD

### NEXT MEETING INFORMATION:

**WEDNESDAY, JAN. 11<sup>TH</sup>, ROWE JR. HIGH, 6:30 P.M.**

A major topic of discussion at the December meeting was the number of cars that are traveling through the Lake Road Improvement Project and identifying some of the dangerous spots within the work zone.

Signs reading, "CLOSED TO THRU TRAFFIC, LOCAL ACCESS ONLY" are posted at 35<sup>th</sup> Avenue and WhereElse Lane on Lake Road. This means if you don't live in the zone, or aren't conducting business in this area, you should not be driving through the work zone. Milwaukie Police have been hitting this area pretty hard, and are writing a good number of \$450 citations.

As the City's project manager, Jason Rice explains, the reason behind limiting traffic in construction zones is all about safety - safety for the workers and safety for those who live and work and have to travel through the area.

When areas are under construction, sight lines are thrown off and lane diversions and detours create added confusion, so the idea is to limit as much traffic as possible.

SUNDAY	MONDAY	TUESDAY	WEDNESDAY	THURSDAY	FRIDAY	SATURDAY
1	CITY OFFICES CLOSED	5:00PM CITY COUNCIL WORK SESSION, (MCH)  7PM CITY COUNCIL REGULAR SESSION, (MCH)	6:30PM DESIGN & LANDMARKS COMMITTEE, (MCH)	6:15PM PUBLIC SAFETY ADVISORY COMMITTEE, (PSB)		Library First Saturday Music Series, Oregon Chamber Players, 2 p.m.
MCH - MILWAUKIE CITY HALL, 10722 SE MAIN ST. PSB - PUBLIC SAFETY BUILDING, 3200 SE HARRISON ST. JCB - PUBLIC WORKS BUILDING, 6101 SE JOHNSON CREEK BLVD. MC - MILWAUKIE CENTER, 5440 SE KELLOGG CREEK DR. LED - LEDDING LIBRARY, 10660 SE 21ST AVE. PND - LIBRARY POND HOUSE, 2215 SE HARRISON ST.	Island Station NDA, 5:30 p.m., Grange Pond House  SPECIAL CITY COUNCIL MEETING ON BASEBALL PROJECT CITY HALL, 7 P.M.	6:30PM PLANNING COMMISSION, (MCH)  Ardenwald/J.C. NDA, 6:30 p.m., Ardenwald Elem.	Lake Road NDA, 6:30 p.m., Rowe Jr. High  Lewelling NDA, 7:00 p.m., Lewelling Elementary  Milwaukie Poetry Series Reading Pond House 7 p.m.	Linwood NDA, 7:00 p.m., Lindwood Elementary	9:30AM MILWAUKIE CENTER ADVISORY BOARD (MC)	
15	16	17	18	19	20	21
22	23	24	25	26		8
29	30	31				



**WATCH CITY COUNCIL  
& PLANNING  
COMMISSION  
BROADCASTS ON  
CABLE CHANNEL 30  
OR STREAM THEM ON  
THE CITY'S WEBSITE!**

## NEIGHBORHOOD DISTRICT ASSOCIATION (NDA) INFORMATION

### ARDENWALD & JOHNSON CREEK

Meetings held on second Tuesdays  
6:30 p.m., Ardenwald Elementary, 8950 SE 36<sup>th</sup> Ave.  
Co Chairs, Matt Rinker and Jeff Davis  
Neighborhood Website: [www.ardenwald.org](http://www.ardenwald.org)

### HECTOR CAMPBELL

Meetings held on second Mondays  
7:00 p.m., Public Safety Building, 3200 SE Harrison St.  
CoChairs, Mary Weaver and Linda Hedges  
Neighborhood Website: [www.hectorcampbellnda.org](http://www.hectorcampbellnda.org)

### HISTORIC MILWAUKIE

Meetings held on second Mondays  
6:30 p.m., Library Pond House, 2215 SE Harrison St.  
Chair, Chantelle Gamba, (971) 404-5279

### ISLAND STATION *Special Time In January*

Meetings held on second Mondays  
5:30 p.m., Milwaukie Grange, 12015 SE 22<sup>nd</sup> Ave.  
Chair, JoAnne Bird, (503) 653-0857  
email: [evenstar@hevanet.com](mailto:evenstar@hevanet.com)

### LAKE ROAD

Meetings held on second Wednesdays  
6:30 p.m., Rowe Middle School, 3606 SE Lake Rd.  
Chair, Debby Patten, (503) 653-7908  
email: [lakeroadna@netscape.net](mailto:lakeroadna@netscape.net)

### LEWELLING

Meetings held on second Wednesdays  
7:00 p.m., Lewelling Elementary, 5325 SE Logus St.  
Chair, Pepi Anderson, (503) 320-6577  
email: [pepi.anderson6@gmail.com](mailto:pepi.anderson6@gmail.com)

### LINWOOD

Meetings held on second Thursdays  
7:00 p.m., Linwood Elemen., 11909 SE Linwood Ave.  
CoChairs Lynn and Beth Kelland,  
(503) 652-8589, email: [LinwoodNA@msn.com](mailto:LinwoodNA@msn.com)



This newsletter is printed on  
recycled FSC™ certified paper,  
using soy base inks.

The City of Milwaukie looks forward to any  
questions or suggestions you might have.  
Please drop us a line or give us a call.

Phone: (503) 786-7503  
email: [wheelerg@ci.milwaukie.or.us](mailto:wheelerg@ci.milwaukie.or.us)



City of Milwaukie  
10722 SE Main Street  
Milwaukie, Oregon 97222  
To reach the City by phone:  
(503) 786-7555

Presorted  
Standard  
ECRWS  
U.S. Postage  
PAID  
Portland, OR  
Permit 990

# Postal Customer