

MILWAUKIE
CITY COUNCIL MEETING
February 16, 1982

COUNCIL CHAMBERS

1402nd Meeting

The one thousand four hundred and second meeting of the Council of the City of Milwaukie, Oregon was held at 7 p.m. on February 16, 1982 with the following councilors present:

Mel Paulson
Wallace Bishcoff (arrived at 8 p.m.)
Mayor Joy Burgess

Don Graf

Also present:

Richard Bailey, City Manager Pro Tem
Greg Eades, City Attorney
Steve Hall, Public Works Director

Gordon Erickson
Finance Director
Ron Schanaker, Police
Chief
Laurie Perkin, Sec'y

The invocation was given by Mayor Burgess and the pledge of allegiance was recited.

AUDIENCE PARTICIPATION

Scott Taylor, Clackamas County Residential Center, addressed the Council regarding formation of a citizen board for the center made up of Milwaukie residents. He suggested that the Council members might like to submit names for consideration. There was general discussion about the type of facility, the functions, and the individuals referred to the center.

Alfred Liane, 4809 SE Monroe Street, asked how the 32nd street sidewalks were financed. Steve Hall, Public Works Director, said that they were financed by block grants.

James Backenstos, 3626 SE Harrison, asked that a bulletin be posted at the Milwaukie Center, informing the public that the center is fully funded by the city under the current budget proposal and that the center will not close if the Senior Services Serial Levy fails.

PUBLIC HEARING - SEWER AND WATER RATE INCREASES- Resolution No. 3-1982 and 4-1982

Public Hearing was declared open at 7:20 p.m. Notices published and posted as required. Staff report was given by Public Works Director. In order to maintain the current level of service, an increase in sewer rates of approximately 12% on March 1, 1982 and in water rates of approximately 10% on July 1, 1982 are required. Correspondence received:

Letter from Marlene Brandt, 9903 SE 49th, Milwaukie.

There was general discussion on the costs of sewage treatment and the contract with Clackamas Sanitary Service District # 1. There was discussion on the billing system and whether it would be possible to bill users every month rather than every two months. Steve Hall, Public Works Director, went through alternative solutions to the rate increases and answered questions. Speaking in opposition to the rate increases:

Marlene Brandt, 9903 SE 49th
Arnold Callan, 12012 SE Wood
James Backenstos, 3626 SE Harrison

Mike Richmond, 11467 SE 30th

Alfred Liane, 4809 SE Monroe

Joy Brookhouse, 6662 SE Furnberg, expressed the hope that the Council would not increase rates more than was necessary. Bill Hupp, 2626 SE Washington, said that this issue should be put on the ballot, so that the citizens paying for the increase would have the right to vote.

There was further discussion regarding the city's contract with Clackamas Service District # 1. Public Hearing was declared closed.

It was MOVED by Graf, SECONDED by Hall, to adopt Resolutions No. 3-1982 (A RESOLUTION OF THE CITY COUNCIL OF THE CITY OF MILWAUKIE, OREGON ESTABLISHING RATES FOR SEWER USE AND REPEALING RESOLUTION NUMBER 9-1981) and Resolution No. 4-1982 (A RESOLUTION OF THE CITY COUNCIL OF THE CITY OF MILWAUKIE, OREGON SETTING FEES FOR WATER SERVICES PROVIDED BY THE CITY UNDER ORDINANCE NUMBERS 1418 and 1424, REPEALING RESOLUTION 8-1981) The MOTION CARRIED with the following roll call vote: AYES: Bischoff, Hall, Graf. NO : Burgess, Paulson. There was discussion on whether or not Bischoff had heard enough of the presentation to vote. Bischoff offered to abstain. It was MOVED by Hall, SECONDED by Bischoff to rescind the previous motion. The MOTION CARRIED with the following roll call vote: AYES: Burgess, Paulson, Bischoff, Hall. NO: Graf. It was MOVED by Hall, SECONDED by Graf, to table the vote on rate increases until the March 2, 1982 meeting to allow Bischoff time to review the tapes. MOTION CARRIED unanimously.

PUBLIC HEARING - SYSTEMS DEVELOPMENT CHARGE - ORDINANCE NO. 1514

Public Hearing was declared open at 8:35 p.m. Notices published and posted as required. Staff report was given by Steve Hall, Public Works Director. The systems development charge will equalize charge for sewer connection throughout the city, provide major additional monies in the water fund, and will help to minimize future rate increases to pay for new construction. No correspondence has been received and no one appeared to speak in favor of, or in opposition to, the proposed systems development charges. There was general discussion concerning the costs and how the funds would be used. Public Hearing was declared closed at 8:50 p.m.

It was MOVED by Paulson, SECONDED by Hall, to read Ordinance No. 1514 the first time. MOTION CARRIED unanimously. The ordinance was read in full by City Manager Pro Tem, Dick Bailey. It was MOVED by Bichoff, SECONDED by Graf, to read the ordinance the second time by title only. MOTION CARRIED unanimously. It was MOVED by Paulson, SECONDED by Bischoff, to adopt Ordinance No. 1514 (AN ORDINANCE OF THE CITY OF MILWAUKIE, OREGON CREATING A SYSTEMS DEVELOPMENT CHARGE FOR THE DEVELOPMENT OF EXTRA CAPACITY SEWAGE AND WATER FACILITIES AND REPEALING SECTION 3 OF ORDINANCE 1322 and RESOLUTION NUMBER 9-1969). MOTION CARRIED with the following roll call vote: AYES: Paulson, Bischoff, Burgess, Graf, Hall. NOES: None. Ordinance No. 1514 passed and was so declared by the Mayor.

PAYMENT OF BILLS

It was MOVED by Hall, SECONDED by Graf, that the bills listed for February 16, 1982 be approved for payment. MOTION CARRIED unanimously.

ORDINANCE 1515 - DEFINING OFFENSES AND PRESCRIBING PENALTIES.

Police Chief has requested an ordinance controlling the issues and types of weapons discharged within the city limits. Included in the ordinance are restrictions regarding the use of fire hydrants and alarms. It was MOVED by Graf, SECONDED by Hall to read Ordinance No. 1515 the first time by title only. MOTION CARRIED unanimously. It was MOVED by Graf, SECONDED by Hall, to read the ordinance the second time by title only. MOTION CARRIED unanimously. It was MOVED by Hall, SECONDED by Bischoff, to adopt Ordinance 1515 (AN ORDINANCE OF THE CITY OF MILWAUKIE, OREGON DEFINING OFFENSES AND PRESCRIBING PENALTIES). The MOTION CARRIED with the following roll call vote: AYES: Paulson, Bischoff, Burgess, Hall, Graf. NOES: none. Ordinance 1515 passed the Council and was so declared by the Mayor.

CHARTER AMENDMENTS

There was Council consensus that the charter amendments be on the November ballot and that there be citizen input. Graf suggested that the Council hold a work session to consider the changes proposed by the City Attorney and then turn it over to a citizen's committee. It was decided to hold a work session at 6 p.m. prior to the next City Council Meetings on March 2 and March 16.

REAPPOINTMENT OF CITY MANAGER PRO TEM

It was MOVED by Graf, SECONDED by Paulson, that Dick Bailey be reappointed as City Manager Pro Tem for a maximum of three months or until a new manager was appointed. MOTION CARRIED unanimously.

It was MOVED by Graf, SECONDED by Paulson, that consideration of the water and sewer rate increases be postponed until June. City Attorney said that the previous motion would have to be rescinded before another motion could be entertained. It was MOVED by Burgess, SECONDED by Paulson, that the previous motion, tabling the vote on rate increases, be rescinded. MOTION CARRIED with the following roll call vote: AYES: Paulson, Bischoff, Burgess, Graf. NO: Hall. It was MOVED by Graf, SECONDED by Paulson, that the consideration of water and sewer rate increases be postponed until June. MOTION CARRIED with the following roll call vote: AYES: Paulson, Burgess, Bischoff, Graf. NO: Hall.

CONSENT AGENDA

It was MOVED by Hall, SECONDED by Graf, that the Consent Agenda be accepted. MOTION CARRIED unanimously. Staff was directed to provide a list of services performed by the League of Oregon Cities at the March 2, 1982 Council meeting.

INFORMATION

The U.S. Postal Service has asked for suggestions regarding a possible location for a new facility. Staff will conduct research on possible locations. Ron Schanaker, Police Chief, is inquiring into the cost of leasing the present post office building.

OTHER BUSINESS

Burgess said that she had many complaints regarding the re-routing of Tri Met from Monroe Street to King Road. Steve Hall explained this was done because of previous complaints from citizens regarding structural damage to homes on Monroe due to the poor condition of the roads. Tri-Met investigated and found the complaints to be justified. Further complaints or inquiries should be directed to Mike Kyte, of Tri Met. There was general discussion on what could be done about the problem. Graf suggested creating an LID to improve the roads.

The meeting was adjourned at 9:55 p.m. to go into executive session to discuss employment of staff, labor negotiations and matters regarding litigation under ORS 192.660 (1) (a), (d) and (h)

The executive session adjourned at 11:20 p.m.

APPROVED BY:

Joy Burgess, Mayor

Laurie Perkin, City Recorder

MILWAUKIE
CITY COUNCIL AGENDA
February 16, 1982
7 p.m.

COUNCIL CHAMBERS

1402nd Meeting

- I. ✓ CALL TO ORDER
- a) ✓ Call to order
 - b) ✓ Invocation
 - c) ✓ Pledge of allegiance
- II. ✓ AUDIENCE PARTICIPATION
Scott Taylor - Residential Center
- III. PUBLIC HEARINGS
- Steve* a) Water and sewer rate increases
 - b) Systems Development charge
- IV. LEGISLATION
- a) Payment of bills
 - Low* b) Ordinance _____ defining offenses and prescribing penalties
 - c) Charter amendments (See February 2 agenda)
 - d) Reappointment of City Manager Pro Tem
- V. CONSENT AGENDA
- a) Approval of minutes - February 2, 1982 meeting
 - b) Request to retain planning consultant
 - c) Liquor license renewal - Vic's Tavern
 - d) League of Oregon Cities - league dues
- VI. INFORMATION
- a) Budget Committee minutes - February 5, 1982
 - b) Parks and Recreation Commission minutes - January 25, 1982
 - c) Letter of appreciation from James Edwards, Willamette Manor
 - d) Letter of appreciation from Larada Johnson, Hector Campbell School
 - e) Letter of appreciation from Delora Hegg, Loaves and Fishes
 - f) Downtown revitalization conference
 - g) Letter from Metro re Johnson Creek Outreach Program
 - h) Letter from Postal Service re relocation
- VII. OTHER BUSINESS
- VIII. ADJOURNMENT
- XI. EXECUTIVE SESSION - to discuss employment of staff, labor negotiations and matters regarding litigation under ORS 192.660 (1) (a), (d) and (h).

Arden, Incubator, Mediation - Police in gr. selection

3 82 10: 45

MA-315-03

III a (1)

COUNCIL SUMMARY

February 5, 1982

FROM: Steven Hall, P.E.
Public Works Director *S.M. Hall*

RE: Sewer and Water Rates
Recommendation

ACTION REQUESTED

Adopt resolutions as provided raising sewer rates approximately 12% on March 1, 1982 and water rates approximately 10% on July 1982.

BACKGROUND INFORMATION:

See attached. To maintain current level of service, a rate increase is required.

ALTERNATIVES CONSIDERED:

See attached for detailed discussions

RECOMMENDATION:

Same as action requested above. Adopt resolutions as submitted.

III a (2)

CITY OF MILWAUKIE
DEPARTMENT OF PUBLIC WORKS
SEWER AND WATER DIVISIONS

REPORT ON
RATE INCREASE REQUEST

FEBRUARY 1982

INTRODUCTION

As with our own individual budgets at home, the buying power of the dollar is shrinking. This fact is as true in government as to the individual citizen or private business.

The City of Milwaukie Public Works Divisions of Water and Sewer are termed as enterprise funds which, loosely paraphrased, means self supporting. The sources of revenues are primarily user fees and connection charges. Each division also contributes to the general fund to cover the cost of accounting, legal, purchasing, personnel, and administration. The Public Works Engineering and Administration Divisions are fully supported by the Water and Sewer Divisions.

The Sewer and Water Divisions provide for new construction, reconstruction, maintenance and operations for about 60 miles of water and sewer lines, 5200 water services, 5800 sewer services, 6 deep water wells, 3 water storage tanks, 4 sewage pump stations, 600 fire hydrants and other miscellaneous related items. This is accomplished with a total work force of 10 full time and two summer employees.

HISTORY

Approximately one-third of Milwaukie's sewer and water systems were constructed in the late 1920's and early 1930's.

For your historical "Green thumb" and to help you realize the utility divisions needs, the following sketch of our history is offered.

II a (3)

Water/Sewer Divisions
Rate increase request

February 5, 1982

DATE	PROJECT	STATUS
1. 14 Jan. 1913	Water Department Authorized.	Still operating
2. 1915	Milwaukie Chose Minthorne Springs water over Bull Run	
3. 3 Feb. 1919	City Acquired Minthorne Springs Water Company	Not used
4. 1925	165,000 Gal. water storage standpipe built	Removed in 1978
5. 1926	Downtown sewers built	Still operating
6. 1927	Residential sewers built	Still operating
7. 1935	Well #1 Built	Removed in 1981
8. 1936	Well #2 Built	Still operating
9. 1946	Well #3 Built	Still operating
10. 1949	1.5 million gal. water storage reservoir built	Still operating
11. 1950	Major water distribution system built	Still operating
12. 1960	Well #4 built	Still operating
13. 1963	Well #5 built	Still operating
14. 1963	Sewage treatment plant built	Shut down 1975
15. 1964	1.5 million gallon water elevated storage tank built	Still operating
16. 1971	Major water line distribution improvements and additions	Still operating
17. 1973	Extensive additions and improvements to sewer system	Still operating
18. 1975	City contracted with Clackamas Service District #1 to process sewage	Still operating
19. 1978	Well #6, pumphouse and 3 MG. water storage tank built.	Still operating
20. 1982	Well #7 being built to replace well #1	Will be in service Summer 1982

III a 4

Until 1978, the City had relied on grants, bonds and "good luck" to replace or maintain the existing water and sewer systems. At that time a program was initiated to provide a replacement construction fund. The intent of this fund is threefold: to provide for major crisis repairs; planned replacement and systematic upgrading; and major repair. Ideally, this fund would grow in proportion to the depreciated value of the system, but that is not reasonable at this point in time. A long term goal is to allow the fund to accrue and maintain a value equal to 5% of the total current system value. That would require an estimated fund value of \$500,000 in the Sewer Division and \$550,000 in the Water Division. This year it was hoped that \$250,000 plus inflation could be set aside in each division.

ANALYSIS

SEWER DIVISION

The "status quo" budget as required by the Budget Committee for this division will require a rate increase sufficient to produce about \$130,000 in additional revenues. To produce those revenues a rate increase of 16% is necessary effective July 1, 1982, or 12% effective March 1, 1982.

An unknown at this point is the new sewage treatment rate currently being negotiated with Clackamas Service District #1 (CSD). In the 1981-82 budget a 15% increase for CSD was programmed and actual was 22%. This has already caused some program curtailment for FY 81-82.

The "status quo" budget contains an estimated 20% increase in sewage treatment rates from CSD. The total "status quo" budget for the Sewer Division contains the following major components:

EXPENSES

1) Treatment Costs (CSD)	\$590,000
2) Debt reduction (CSD)	106,700
3) Operations (Milwaukie)	306,158
4) Replacement Construction (Milwaukie)	290,000
Total Estimated	\$1,292,858

NOTE: Over 52% (696,700) are direct "pass through" costs to CSD#1.

II a (5)

Sewer Division analysis (cont.)

REVENUES

1) Available Capital (Replacement Construction)	\$273,000
2) Sewer Service Charges	820,000
3) Connection Fees	50,000
4) Investment Interest	19,858
5) Rate Increase requested	130,000
Total Estimated	<u>\$1,292,858</u>

Following are proposed alternative rate increases, each based on effective date of July 1 or March 1, 1982 as noted.

BUDGET	INCREASE %		CUTS TO REACH BUDGET
	July 1, 1982	March 1, 1982	
\$1,292,858 "Status Quo"	16%	12%	NONE
\$1,250,000	11%	8½%	(Cut 42,858) Cut U.W.I Reserve at \$273,000
\$1,238,000	9½%	7%	(Cut 54,858) Cut U.W.I Cut Part Time Summer Aid Cut reserve to \$263,000*
\$1,198,000	4½%	3½%	(Cut 94,858) Cut 2 - U.W.I's Cut Equipment Reserve Cut Part Time Summer Aid Cut Reserve to \$251,000**

*Requires use of \$10,000 from 1980-81 reserve for operational costs.

**Requires use of \$22,000 from 80-81 reserve for operational costs.

III a
6

WATER DIVISION

The "Status quo" budget as required by the budget committee for this division will require a rate increase sufficient to provide about \$107,000 in additional revenues. To provide those revenues a rate increase of 15% is necessary July 1, 1982 or 11 1/4% effective March 1, 1982.

The "status quo" and recommended budgets for the Water Division would contain the following major components:

<u>EXPENSES</u>	<u>STATUS QUO</u>	<u>RECOMMENDED</u>
1) Operations	\$595,164	\$595,164
2) Replacement Reserve	160,000	160,000
3) New Construction	288,000	253,000
4) Debt Reduction	76,040	76,040
Total Estimated	\$1,119,204	\$1,084,204

REVENUES

1) Available Capital (Replacement Construction)	\$156,000	\$156,000
2) Water Sales	715,000	715,000
3) Service installations	30,000	30,000
4) Standby Fees	19,000	19,000
5) Miscellaneous Income	35,000	35,000
6) Interest	7,204	7,204
7) Carry-over, Reservoir Rehab.	50,000	50,000
8) Increase in rates	107,000	72,000
Total Estimated	\$1,119,204	\$1,084,204

Following are alternative rate increases, each based on effective date of July 1, or March 1, 1982.

BUDGET	INCREASE %		CUTS TO REACH BUDGET
	July 1, '82	March 1, '82	
\$1,119,204 (Status Quo)	15%	11 1/4%	None
\$1,083,700	10%	7 3/4%	Reduce capital for new well* from \$150,000 to \$115,000 & program part in 83-84.
\$1,048,000	5%	3 3/4%	Reduce capital for new well from \$150,000 to \$79,000 design in 82-83, build in 83-84.

*Alternate would be to use replacement reserve to make up \$35,000 in 1982-83 budget.

II a (7)

COMPARISON

In comparing rates to other cities or Water Districts it must be noted that each has an individual philosophy of operation and particular needs due to the age, complexity and past practices.

One item of particular difference is that Milwaukie has supported the Engineering and Public Works Administration functions from water, sewer and occasionally state gas tax funds. In the comparisons that follow, this has been shown separately to reflect that fact.

The proposed increases will change the average home owner's bi-monthly bill as follows:

FUND	CURRENT	STATUS QUO	RECOMMENDED
Sewer	\$14.00	\$15.70	\$15.70
Water	\$14.93	\$17.14	\$16.42
TOTAL	\$28.93	\$32.84	\$32.12
Annual increase		\$23.46	\$19.14

The distribution of the recommended rates would be:

ITEM	SEWER		WATER	
	BUDGET	Bi-Monthly Bill	BUDGET	Bi-Monthly Bill (2)
Gen. Fund	\$ 29,130	0.45	\$ 72,762	1.36
Eng./Admin.	74,170	1.14	148,338	2.77
Operations	197,858	3.04	374,064	7.00
Capital	5,000	0.08	203,000	3.80
Reserve	17,000	0.26	5,000	0.07
Treatment(1)	590,000	9.08		
Debt Reduction(1)	106,700	1.65	76,040	1.42
TOTAL	\$1,019,858 (3)	\$15.70	\$878,204(3)	\$16.42

- (1) Paid to Clackamas Service District - Covered by contractual Agreement.
- (2) Bases on bi-monthly consumption of 2,000 cubic feet.
- (3) Does not include cash carry-over from previous years.

III a
(8)

Using the figures previously derived, the following comparison is made for water costs using a bi-monthly billing and 2000 cubic foot (cf) consumption for an average homeowner:

CITY or District	BASE RATE	MIN. C.F.	COST/100cf above min.	AVERAGE BILL	COMMENTS
Milwaukie	\$ 6.90	600	0.68	\$13.65	(Proposed rate)
Oak Lodge	6.50	1000	0.55	\$12.00	Current rate
Clackamas	6.50	800	0.50	12.50	" "
West Linn	12.70	2000	0.60	12.70	" "
Oregon City	12.85	1500	0.50	15.35	" "
Lake Oswego	11.50	-0-	0.36	18.70	" "
Wichita	6.50	400	0.65	16.90	" "

Comparison of sewer rates is not as simple. Milwaukie direct costs are for operation and maintenance of only the collection system. Sewage treatment is via contract with Clackamas Service District #1.. The following give a "similar" comparison:

CITY or DISTRICT	TOTAL BI-MONTHLY CHARGE	COLLECTION SYSTEM ONLY	COMMENTS
Milwaukie	\$14.56	\$3.83	Proposed
New Tri-City	\$12.00	\$5.00	Proposed
Gladstone	\$11.00	\$2.75	Existing (W/CSD)
Oak Lodge	9.00	Unknown	
West Linn	8.00*	Unknown	

*Will be set at Tri-City rate.

Although it is dangerous to get into the comparison game, it is a fact that has to be dealt with. You will note that we are "in the middle" of the rate structure comparison when Public Works Administration and Engineering are removed.

Also, it is hoped that the contract negotiations with Clackamas Service District #1 for processing sewage will bring a rate increase of less than the estimated 20%, but is an unknown at this time.

RECOMMENDATION

SEWER DIVISION

Adopt 12% rate increase effective March 1, 1982 for Status Quo budget.

Water/Sewer Division
Rate increase request

-8-

February 5, 1982

II
a
(9)

RECOMMENDATION: (continued)

WATER DIVISION

Adopt 10% rate increase effective July 1, 1982 and spread construction of new well over a period of two (2) fiscal years, 1982/83 and 1983/84.

SUMMARY

Inflation is a reality. In order to maintain a somewhat reasonable program for these vital utilities the raises noted are minimum. By staggering the rate increases, the impact on the individual or company is reduced.

The rate increase proposed in the water division does not provide "status quo" as a needed project (new well) is partially deferred and no new monies are added to the replacement construction reserve.

RESOLUTION NUMBER _____

III
10

A RESOLUTION OF THE CITY COUNCIL OF THE CITY OF MILWAUKIE, OREGON ESTABLISHING RATES FOR SEWER USE AND REPEALING RESOLUTION NUMBER 9-1981.

WHEREAS, Ordinance Number 981 provides that sewer rates shall be established by Council resolution, and

WHEREAS, the Council has determined it is necessary to maintain appropriate rates in order to keep up with sewage treatment and other increasing costs.

NOW, THEREFORE, BE IT RESOLVED by the Council of the City of Milwaukie that the following charges for sewer service be established and Resolution Number 9-1981 be repealed.

1. EFFECTIVE DATE: To be effective commencing with billings prepared on or after March 1, 1982.
2. FLAT RATE: A flat bi-monthly rate to be charged.
 - a. Single family residences \$15.70
 - b. Each residence unit in multiple unit structures \$15.70
3. COMMERCIAL, INDUSTRIAL, and OTHER THAN RESIDENTIAL RATE:

A bi-monthly rate of \$15.70 to be charged based on the first 1600 cubic feet of water consumed. A rate of \$1.00 per 100 cubic feet in excess of the first 1600.
4. EXCESSIVE CONTAMINANTS: Additional charges may be established by the City Council for excessive water contaminants.
5. LOW INCOME RATE: A reduced by-monthly rate of \$6.75 for individual sewer users qualifying under Ordinance Number 1424.
6. LOW INCOME QUALIFICATIONS: Shall be the same as used in administering Water Rates under Ordinance Number 1424.

Be it so resolved.

Introduced and adopted by the City Council of the City of Milwaukie Oregon on the 16th day of February 1982 at a regular meeting of the City Council.

Joy Burgess, Mayor

ATTEST:

Laurie Perkin, City Recorder

Approved as to form:

Greg Eades, City Attorney

RESOLUTION NUMBER _____

II a (11)

A RESOLUTION OF THE CITY COUNCIL OF THE CITY OF MILWAUKIE, OREGON SETTING FEES FOR WATER SERVICES PROVIDED BY THE CITY UNDER ORDINANCE NUMBERS 1418 and 1424. REPEALING RESOLUTION 8-1981.

WHEREAS, Ordinance Numbers 1418 and 1424 provide that charges for various water services be established by the City Council,

NOW, THEREFORE, BE IT RESOLVED by the Council of the City of Milwaukie that the following charges for water service be established and Resolution Number 8-1981 be repealed.

1. EFFECTIVE DATE: To be effective commencing with billings prepared on or after July 1, 1982.
2. MINIMUM BI-MONTHLY CHARGE: Charges for water per connection:

<u>Meter Size</u>	<u>Minimum</u>	<u>Water Allowance</u>
5/8 x 3/4"	\$6.90	600 cubic feet
3/4"	6.90	600 " "
1"	13.75	1,200 " "
1 1/2"	26.50	2,400 " "
2"	41.25	3,600 " "
3"	75.75	6,600 " "
4"	103.25	9,000 " "
6"	206.25	18,000 " "

3. EXCESS OF MINIMUM: Charge for water used in excess of minimum.

All additional \$0.68 per 100 cubic feet

4. STANDBY CHARGES:
 - a. Bi-monthly charge per inch of meter size \$6.90
 - b. Water use for fire extinguishment to be charged at \$0.68 per 100 cubic feet for use in excess of minimum.
 - c. Water use for other than fire extinguishment to be charged at \$1.36 per 100 cubic feet.
5. OUTSIDE CITY LIMITS: Water use by connections outside of city limits to be charged at 1.5 times regular rates.
6. LOW INCOME CHARGES: A reduced bi-monthly minimum rate of \$3.50 for individual water users under Ordinance 1424.

III^a

12

7. LOW INCOME QUALIFICATIONS: Under Ordinance Number 1424.
- a. Application is made to the City Finance Department.
 - b. No sewer or other assessments are in arrears.
 - c. The property is occupied and used by the applicant as his or her principal residence.
 - d. Maximum yearly income cannot exceed \$6,000 for one person living alone.
 - e. Maximum yearly income cannot exceed \$8,400 for two or more people in one residence.

Be it so resolved.

Introduced and adopted by the City Council of the City of Milwaukie, Oregon on the 16th day of February, 1982, at a regular meeting of the City Council.

ATTEST:

Joy Burgess, Mayor

Laurie Perkin, City Recorder

Approved as to form:

Greg Eades, City Attorney

3 82 8
MILWAUKEE
CITY OF MILWAUKEE
MEMORANDUM
PUBLIC WORKS DEPARTMENT

III a
13

TO: City Council

DATE February 11, 1982

FROM: Steven Hall
Public Works Director *A.M.H.*

SUBJECT: Havlicek letter
Meter reading cycle

Attached are memos from Cliff Harshman and Gordon Erickson in response to Mr. Havlicek's letter.

I believe the idea has merit, although there are too many unknowns at this point in time. If Council is interested, more research could be done.

I am requesting that any action be delayed until finance acquires the new computer. There is automated technology available which could allow substantial efficiencies in the reading and billing processes.

This request shouldn't be tied to the rate proposals at this time.

SMH:js

II a
14

February 2, 1982

Suggestion to the City of Milwaukee, City Council

Re: Water service costs/rates

Existings:

Meters now read six times yearly, clerks calculate individual customer usage six times yearly and mail out six different billings to users.

Consider:

- (1) Read all residential meters semi-annually, continue to read ^{large} commercial meters as in the past.
- (2) Clerks calculate residential (and certain low volume commercial) usage on a semi-annual basis. Billings to residential customers (and low volume commercial) continue to go out bi-monthly, however, clerks average customer usage costs over the three bi-monthly billing periods, so make only one calculation every six months instead of three.
- (3) Residential customers (and low volume commercial) meters to be read on an "on call" basis if customer feels there may be a leak or special need.
- (4) Initial "start-up" billing would be based upon previous usage periods.

Advantages:

To the City--

(1) Savings of approximately 2/3 of the time meter reader now spends on residential service--also savings on mileage costs of operating vehicle for this individual. Should mean a savings of about one-half the the existing cost for meter reading. This individual can then be employed in other ways either within the water bureau or other city public works departments.

(2) Savings of approximately 2/3 of the time clerks now spend calculating and billing residential (and low volume commercial) water user rates. This time savings can be allocated to other administrative department needs and perhaps reduce the need for additional employees.

(3) Elimination of approximately 2/3 of the dog bites the city meter reader is now exposed to.

To the User--

(1) Constant water bills--no sudden shock when the two summer billings arrive as the summer cost will be averaged into winter usage (the ~~many~~ utility companies do this for customers all the time).

(2) Lower city administrative costs to operate the water bureau, hence lower rates.

T. L. Haylicek
1520 SE Eton Lane

CITY OF MILWAUKIE
M E M O R A N D U M
PUBLIC WORKS DEPARTMENT

IIIa
15

TO: Steve Hall
Public Works Director

FROM: Cliff Harshman
Public Works Superintendent

SUBJECT: Meter reading

DATE February 10, 1982

From an operation and maintenacne standpoint a change in meter reading intervals has its pros and cons.

PROs - -

1. Decreases, somewhat, the labor cost; depending on how much more time is added to the cycle.
2. Decrease in vehicle operation and maintenance, which is an ever increasing expense.

CONs - -

1. Unable to detect leaks in customers usage.
2. Possibility that it will take more time to read meters due to grass and debris over meter box.
3. Delay in detecting malfunctioning meters.

Depending on the method implemented, several approaches to meter reading can be undertaken. 1) Remain the same with one Meter Reader reading all month. 2) Utilize four or five people to read the whole City within a specific time period prior to billing.

One consideration which should be studied if a change is undertaken would be to take a look at existing meter reading routes to determine if changes are going to speed up reading and thus become more cost effective as well as time effective.

I have talked only of operation and maintenance and not the financial aspect. Gordon Erickson will reply to that.

On a related subject I would like to suggest that the meter reader stop extending the meter books especially if we go to having several people read the meters. In either method of reading the probability of the reader making adjustments or not reading the meters is eliminated..

CH:js

IIa
16

February 10, 1982

M E M O R A N D U M

TO: City Council
FROM: Gordon Erickson, Finance Director
SUBJECT: Water Service Costs

The following are the items that I consider to be detrimental to a change in our current billing systems.

1. If meters are read on a less frequent basis, many of the leaks currently discovered would go undiscovered for longer periods of time. This would create a situation in which large amounts of water would be lost from the system. Our current practice is that when water flows through a meter the customer is considered to have received it regardless of where a leak exists in his system. The anticipated cost increases to the user because of leaks is very significant compared to the amount that might be saved by reading less frequently.
2. Determining an initial start of billing for a customer or tenant moving into a location would be difficult. We would in effect be creating a deposit system whereby we instructed a customer to pay a certain stated amount for the first two billing periods and then we would adjust it at the third billing. This could create a situation where if we estimated at \$12.00 per period for water and the actual turned out to be \$14.00 the customer would then, when we adjusted, have to pay \$16.00 in order to make up for the lost \$2.00 per billing in the prior periods and to adjust to the current anticipated usage.

Advantages;

1. The City would save a portion of the meter readers time now spent in reading meters.
2. With our current accounting equipment we would not save any time related to calculating fewer billings. Under computerized systems it would be possible to save approximately one quarter of an Accounting Clerks time due to the lack of calculating billings.

III a
①7

3. We could estimate better the total revenue that would be received in a given month because the billings would be primarily on an estimated basis. This does not provide a substantial benefit to us as we now invest money on a daily basis.

Summary:

We currently have an average of 70 water customers per month moving or requesting a billing due to change of occupancy. This volume, is indicative of a fairly mobil population. With less frequent readings we would tend to have larger adjustments and more difficulty in collecting billings from those people moving out. In summary, I feel that less frequent meter reading would not be beneficial to the Finance Department due to the collection problems that it would create and because it would tend to make our operations even more impersonal than they are now.

COUNCIL SUMMARY

February 8, 1982

III
b
①

FROM: Steven Hall, P.E.
Public Works Director *S.M. Hall*

SUBJECT: Systems Development Charges
Water and Sewer Divisions

ACTION REQUESTED:

Approve attached Ordinance establishing systems development charges for sewer and water.

BACKGROUND INFORMATION:

See attached study and report

ALTERNATIVES CONSIDERED:

Option #1. Adopt Ordinance with systems development charges as recommended.

- A. Beneficial and Adverse Effects. Will equalize charge for sewer connection throughout City. Will eliminate question as to interpretation of Section 3., Ordinance 1322 for sewer connection charges. Will not provide major additional monies in sewer fund. Will provide additional monies in water fund. Will assist in minimizing future rate increases to pay for new construction.
- B. Consistency with City Policy. Will provide distribution of costs more equitably for new construction and extra capacity now in place and future new capacity demands. Council policy is to seek new revenue sources.
- C. Legal Opinion: Reviewed and approved by City Attorney.
- D. Budgetary Impacts. Will have minor impact on sewer fund revenues. Will provide additional monies for Water Department facility expansion.

Option #2. Leave connection fees "status quo".

- A. Beneficial and Adverse Effects. Only potential adverse effect would be loss of revenues in water fund and vague language of Ordinance 1322 would still remain. No beneficial impacts.
- B. Consistency with City Policy. Provides "status quo".
- C. Legal Opinion. None required
- D. Budgetary Impacts. None

111-OR

10 FEB 22 1982

Council Summary
Systems Development Charge

-2-

February 8, 1982

II b
(2)

RECOMMENDATION:

Adopt ordinance establishing Systems Development Charges for
Water and Sewer Divisions as presented.

Enclosure: Report
Ordinance (proposed)
Calculation form
Ordinance 1322
Resolution 9-1969
Samples

SMH:js

Steven Hall, Public Works Director
Mayor, Jay Burgess
Council members

2 16 82
RECEIVED

FEB 16 1982
S.M. Hall
CITY OF MILWAUKIE
DEPT. OF PUBLIC WORKS

In regards to the increase in water & sewer charges, I am sorry to hear it. After reading the Key Communicator letter and trying to get over the shock of another increase, I read in the Review that there is also another increase for water & sewer in the upcoming budget. Doesn't anyone in City Hall ever wonder how these constant increases affect the citizens?!

Our family is a "one income" family and we only get one raise every three years. At this point we can hardly make ends meet and we are not alone in this situation.

I know there is no chance in your not giving up these increases, so I am asking that the billing system be changed to make it easier on the citizen. I am suggesting that we be able to pay monthly instead of every two months. Please don't throw your arms up & say it can't be done because there are ways it can be done. We are having to change our budget systems on the home fronts in order to pay your increases, so the least you can do is try to help us make it possible.

Marlene Brandt
9903 S.E. 49th
Milwaukie, Or. 97122

659-3859

STUDY AND REPORT
MILWAUKIE PUBLIC WORKS DEPARTMENT
SEWER AND WATER DIVISIONS
SYSTEM DEVELOPMENT CHARGE

III
h
3

BACKGROUND

Historically, additions to the City's utility system have been financed by grants, revenue bonds, general obligation bonds or utility revenues in various combinations. At the time those additions were completed the size of each component was based on full growth of the area served. As a result, residents and users at the time of completion of a given facility are paying for additional capacity to serve new customers who will build in the future. In summary existing customers are subsidizing future customers.

As an example, in 1969 the City entered into an agreement with Clackamas County Service District #1 and agreed to "buy" 40% of the capacity of the Kellogg Treatment Plant, 13.5% of the Lower Kellogg Sewer Interceptor and 11.2% of the Lower Mt. Scott Creek Sewer Interceptor. Those facilities were sized for Milwaukie's ultimate estimated population of 20,900 while serving a population of about 18,300 at the time of construction. In this particular example 18,300 people were paying the cost for a future population of 20,900.

A systems development charge (SDC) is intended to have each major system expansion paid on a pro-rata share of the cost, for all "future" customers. As an example, within Ordinance 1322 a fee has been levied by assessment as a connection charge to recover the city investment in the "extra" capacity of the system in the amount of \$560,473.83 (Roll #117), principle only.

It is the intent of this proposal to request the City Council complete four actions:

1. Delete collector assessment, connection charge and interceptor assessment from Ordinance 1322.
2. Delete Resolution 9-1969 providing for connection fees outside of area covered by Ordinance 1322.
3. Establish uniform SDC for all new connections to sewer system in Milwaukie.
4. Establish SDC for all new connections to water system in Milwaukie.

These items will be detailed in report as follows.

11 b
④

SEWER DIVISION
DETAILED ANALYSIS

The initial assumption is that the connection charges and assessments collected under Ordinance 1322 have already offset the city's investment as noted in Assessment Roll #117.* With that assumption, a Systems Development Charge (SDC) will be developed based on a per dwelling unit cost share of treatment plant, interceptor and collector sewer construction costs. The construction costs will be based on current values and be varied based on the Engineering News Record Construction Cost Index.

TABLE I - FACILITY COSTS

ITEM	DATE	ENR	ENR Jan '82	COST	CURRENT COST (Based on ENR)
Clack Service Dist. #1	1974	2020	3725	** \$1,763,632	\$3,252,242
Milwaukie Interceptors	1975	2212	3725	** \$1,770,206	\$2,981,020
TOTAL					\$6,233,262
Collector Assessment		2293	3725	0.06***	\$0.10/sq. ft.

* Revenues thru 1979-80 = \$560,949
Systems Cost = \$560,474

** Includes Construction, Engineering, Bond Interest

*** Ordinance 1322

1974 Population = 18,300 (Portland State University)
Maximum Population = 20,900 (Milwaukie Comprehensive Plan)
Single Family Density = 2.99 (" ")
Multi Family Density = 1.94 (" ")

Cost per capita, Maximum population = $\frac{\$6,233,262}{20,900}$
= \$298/capita

Unit cost for single family unit. = (\$298/capita)(2.99 capita/sfu)
= \$891

Unit cost for multi family unit = (\$298/capita)(1.94 capita/unit)
= \$578

Multi family as percent of single family SDC = $\frac{(\$578)}{(\$891)}$ (100%)
= 65%

SEWER DIVISION

III B (5)

RECOMMENDATION

1. Set base unit cost at \$890 with ENR at 3725.
2. Set Equivalent at:

TYPE OF USE	EQUIVALENT
Single family residence	One single family res. = 1 unit
Multiple family dwelling	One dwelling = .65 unit
High Schools	10 students = 1 unit
Elementary Schools	15 students = 1 unit
Motels & transient hotels	2 rental spaces = 1 unit
Trailer parks	1 rental space = 1 unit
Restaurants and taverns	6 seating spaces = 1 unit
Hospitals and institutions	2 beds = 1 unit
Industrial and commercial bldgs. (without industrial waste)	Each 1200 sq.ft. floor area = 1 unit
Warehouse	Each 2400 sq.ft = 1 unit

2. System Development Charge shall equal the total number of units times the base unit cost times the current Engineering News Record Construction Cost Index divided by 3725 (ENR at the time of base unit cost).
4. All areas which have not been previously assessed for collector sewers shall pay a collector assessment of \$0.10 per square foot of land area times the current Engineering News Record Construction Cost Index divided by 3725 less construction cost of collectors born by property but not less than zero (0).
5. Establish a separate fund for accumulation of System Development Charges with specific uses of sewer system expansion or reconstruction. (Capital outlay)

WATER DIVISION
DETAILED ANALYSIS

4 b
①

TABLE I

AVERAGE WATER CONSUMPTION

* PER Capita Peak	285 Gallons per capita per day (GPCD)
* 25% Reserve Storage	1.45 Million Gallons (MG)
* 25% Peaking Storage	1.45 MG
* Fire Storage	1.50 MG
Population	18,500 (1979 Est.)

*Source: "Water Survey & Storage Review",
August 1977.

$$\begin{aligned} \text{Total per capita storage} &= \frac{1.45 \text{ MG} + 1.45 \text{ MG} + 1.50 \text{ MG}}{18,500} \\ &= 240 \text{ Gallons per capita (GPC)} \end{aligned}$$

TABLE 2

COST ESTIMATES

Facility	Cost x \$1,000	ENR at Bid	ENR Jan. '82	Cost X 1,000 @ Jan. '82	Cost/ Unit
3 MG Storage	324.0	2769	3725	436	\$0.145/Gal
Well (16")	38.5	2674	3725	54	\$ 72/GPM
¹ Pump Station					
Well PUMP	29.4	2855	3725	38	\$ 58/GPM
Domestic	68.7	2855	3725	90	\$ 60/GPM
Fire	228.9	2855	3725	299	\$ 60/GPM
Land					
Acquisition (1.97 acres)	46.0	2673	3725	64	\$ 32,000/acre

¹ Computation based on cost percent, GPM Produced:

Well Pump	650 GPM	9%	\$29,400
Domestic Pumps	1500 GPM	21%	68,700
Fire Pumps	5000 GPM	70%	228,900
<u>TOTAL</u>	<u>7150 GPM</u>	<u>100%</u>	<u>\$327,000</u>

For purposes of setting an SDC, it is recommended that the unit equivalency used in sewer connection charges be utilized for the water SDC. See recommendation, Sewer Division. A single family residence with 2.99 persons per residence (1) will also be used.

(1) Comprehensive Plan

WATER DIVISION
(continued)

ESTIMATE OF BASE UNIT CHARGE

Factor 1 -- Domestic/supply capacity

$$\text{Cost} = (2.99 \text{ capita})(285 \text{ GPCD}) \left(\frac{\$72 + \$58 + \$60}{\text{GPM}} \right) \left(\frac{\text{GPM}}{1440 \text{ GPD}} \right) \\ = \$112/\text{unit}$$

Factor 2 -- Reserve, Peaking and Fire Storage

$$\text{Cost} = (2.99 \text{ capita})(240 \text{ GPC})(\$0.145/\text{Gal}) \\ = \$104/\text{unit}$$

Factor 3 -- Fire Pumping Capacity

$$\text{Cost} = \frac{5,000 \text{ GPM}}{18,500 \text{ capita}} (2.99 \text{ capita})(\$60/\text{GPM}) \\ = \$48/\text{unit}$$

Total Connection Charge

$$\text{Estimate per Unit} = \$112 + \$104 + \$48 \\ = \$264/\text{Unit (1)}$$

(1) Based on Engineering News Record Construction Cost Index of 3725, January 1982

RECOMMENDATION

1. Set base unit cost at \$265 with ENR at 3725.
2. Set equivalent factor at same as sewer.
3. Establish a separate fund for accumulation of System Development Charges with specific uses of Water System Expansion/Reconstruction. (Capital outlay only)

CITY OF MILWAUKIE
PUBLIC WORKS DEPARTMENT

II b
8

SYSTEMS DEVELOPMENT CHARGE COMPUTATION
(Ordinance)

APPLICANT	PROPERTY DESCRIPTION
NAME: _____	_____
ADDRESS: _____	_____
City _____ State _____ Zip _____	_____
DATE: _____	NOTE: Attach copy of Assessor's or Subdivision map.

Equivalent Units (see table 1)	=	_____ (1)
Engineering News Record Ratio* <u>3725</u>	=	_____ (2)
*Current value as of _____ (date)		
<u>SEWER SDC</u>		
(_____) (_____) (\$890.00)	=	\$ _____
(1) (2)		
<u>WATER SDC</u>		
(_____) (_____) (\$265.00)	=	\$ _____
(1) (2)		
<u>SEWER COLLECTOR ASSESSMENT*</u>		
(_____) (_____) (\$0.10)	=	\$ _____
(Area) (2)		
<u>COLLECTOR CONSTRUCTION COSTS**</u>	=	(-) \$ _____
	TOTAL CHARGE =	\$ _____

Computed by _____ Date _____
Checked by _____ Date _____

* Only if property has not been previously assessed for same.
** Construction costs attributable to property, not greater than sewer collector assessment.

MILWAUKIE ORDINANCES

ORDINANCE NO. _____

III
b
9

AN ORDINANCE OF THE CITY OF MILWAUKIE, OREGON CREATING A SYSTEMS DEVELOPMENT CHARGE FOR THE DEVELOPMENT OF EXTRA CAPACITY SEWAGE AND WATER FACILITIES AND REPEALING SECTION 3 OF ORDINANCE 1322 and RESOLUTION NUMBER 9-1969.

WHEREAS, having considered various proposals and plans for equitable financing of all or part of future or existing sewage and water improvements and developments within the City of Milwaukie and recognizing that the continuing increase in the intensity of the use of land and sewage and water facilities within the City will require substantial changes for the safety of the public and in order to protect the values and usefulness of properties within the City, the City Council has determined that a systems development charge for existing and future extra capacity sewage and water facilities development should be imposed and collected as the fairest, most equitable method of funding the required improvements.

THE CITY OF MILWAUKIE DOES ORDAIN AS FOLLOWS:

Section 1. Purpose. A system development charge for existing and future extra capacity sewage and water facilities development is hereby imposed for the purpose of creating a source of funds to pay for the installation, construction, and extension of extra capacity sewage and water facilities. This charge shall be collected at the time of the development of properties which contribute to increase the need for those facilities.

Section 2. Definitions.

A. "Building Permit". Any permit issued by the Building Division for the construction of any building under the City or State Building Code, except permits for the construction, repair or remodel of any building damaged or destroyed by fire or any natural disaster, where such construction does not result in additional sewage or water facility capacity.

B. "Extra Capacity Sewer and Water Facilities." Existing or future improvements which have been or will be required to provide adequate facilities. Such extra capacity facilities include sewage treatment plant, sewage collection lines, sewage pump stations, water wells, water distribution facilities, water storage facilities and water pumping facilities.

C. "Unit". Defined as one (1) single family living unit.

Section 3. Charge imposed. A system development charge for extra capacity sewer and water facilities development is hereby imposed upon all development within the City of Milwaukie after the effective date of this ordinance. Charges shall be as follows:

II
b
10

A. Sewer Facilities. Base unit cost is \$890.

B. Sewer Facilities. For areas described in Ordinance 1322, an additional Systems Development Charge will be levied at the rate of \$0.10 per square foot of land if not previously assessed under Ordinance 1322, Section 2.B.

C. Water Facilities. Base unit cost is \$265.

D. System Development Charge shall equal the total number of units times the base unit cost times the current Engineering News Record Construction Cost Index (ENR) divided by 3725 (ENR at the time of base unit cost).

E. Number of units shall be determined by the following table:

TYPE OF USE	EQUIVALENT
Single family residence	One single family res. = 1 unit
Multiple family dwelling	one dwelling = .65 unit
High Schools	10 students = 1 unit
Elementary schools	15 students = 1 unit
Motels and Transient hotels	2 rental spaces = 1 unit
Trailer parks	1 rental space = 1 unit
Restaurants and taverns	6 seating spaces = 1 unit
Hospitals and institutions	2 beds = 1 unit
Industrial and commercial bldgs. (without industrial waste)	Each 1200 sq.ft. floor area = 1 unit
Warehouse	Each 2400 sq.ft. = 1 unit

Section 4. Collection.

A. A system development charge for extra capacity sewer or water facilities is immediately due and payable upon receipt of an application for a sewer or water permit. The applicant for a sewer or water permit shall pay the applicable charge prior to the issuance of a sewer or water permit for any new construction or any addition, alteration, or change in use which increases the amount of sewage or water demand use. The City shall decline to issue any such permit until that charge has been paid in full. Whenever the full and correct system development charge for extra capacity sewer or water facilities has not been paid and collected for any reason, the City Manager shall report to the City Council the amount of the uncollected charge, the description of the real property to which the charge is attributable, the date upon which the charge was due, and the name or names of the owner or owners of record title, and of any purchasers under a recorded sale agreement relating to the described land.

III
b
11Section 4. A. (continued)

City Council shall take testimony at a public hearing and shall direct the City Manager to give notice of that hearing to each of those owners and contract purchasers. The notice shall include a copy of the City Manager's report concerning the unpaid charge, and the notice shall be delivered either in person or by certified mail. At the time of the public hearing the City Council may accept, reject, or modify the City Manager's report and, if it finds that any charge is unpaid and uncollected the Council by motion shall direct the City Recorder to docket the unpaid and uncollected charge in the record of liens. Upon completion of the docketing the City shall have a lien against the described land for the full amount of the unpaid charge, interest, and the City's costs incurred in serving notice upon the owners and contract purchasers. The lien shall be enforced in the manner provided by law.

Section 5. Segregation of revenues. All funds derived from the system development charge for extra capacity sewer and water facilities development shall be kept in a special line item in the sewer fund and/or water fund entitled "replacement construction". This line item shall be segregated from other line items of the City, and shall be used for no purpose other than the installation, construction, replacement and improvement of extra capacity sewer and water facilities as defined in Section 2 of this ordinance.

Section 6. Appeals. Any person who is aggrieved by a decision required or permitted to be made by the City Manager under this ordinance may appeal that decision to the City Council by filing a written request with the City Recorder, describing the decision of the City Manager from which the person appeals. In considering the appeal the Council shall determine whether the City Manager's decision is correct and may affirm, modify, extend or overrule that decision.

Section 7. Scope. The system development charge of extra capacity sewer and water development provided for in this ordinance is separate from and in addition to any and all applicable taxes, assessments, charges, or fees otherwise provided by law. In particular, it is a charge to be imposed in addition to any such charges as may be imposed in the way of ordinary sewer and water assessments pursuant to the City of Milwaukie applicable ordinances.

Section 8. Repealer.

A. Section 3, Future Assessments of Ordinance 1322 is hereby repealed upon the effective date of this ordinance.

ORDINANCE NUMBER _____

Page 4

II b (12)

B. Resolution 9-1969 is repealed in its entirety.

Read the first time _____, 1982, and moved to second reading by _____ vote of the City Council.

Read the second time and adopted by the City Council _____, 1982.

Signed by the Mayor _____, 1982.

Joy Burgess, Mayor

ATTEST:

Laurie Perkin, City Recorder

Approved as to form:

Greg Eades, City Attorney

III
b
13

AN ORDINANCE DECLARING THE ASSESSMENT FOR THE CONSTRUCTION OF SANITARY SEWERS AND APPURTENANCES IN THE EAST MILWAUKIE AND ISLAND STATION AREAS OF THE CITY OF MILWAUKIE.

The assessment is hereby declared and levied and appears in Assessment Roll No. 117 now on file in the office of the City Recorder of Milwaukie, Oregon.

THE CITY OF MILWAUKIE DOES ORDAIN AS FOLLOWS:

SECTION 1. The assessment for the construction of sanitary sewers and appurtenances in the EAST MILWAUKIE AND ISLAND STATION AREAS OF THE CITY OF MILWAUKIE AS DESCRIBED IN ORDINANCE NO. 1265 Creating the Local Improvement District in Milwaukie and applicable drainage basins, Clackamas County, Oregon.

SECTION 2. The assessment method approved by the City Council is as follows:

A. The assessment for interceptor sewer shall be at the rate of \$0.0125 per square foot of the total lot, tract or parcel area.

B. The assessment for the collection system shall be at the rate of \$0.06 per square foot of property lying within 150 feet of a sanitary sewer to a maximum lot area of 15,000 square feet for a single family site with appropriate additional areas equivalency for multi-family, commercial and industrial properties as outlined in Exhibit B of Ordinance 1265.

C. A base connection charge of \$550.00 for each single family resident with appropriate additional charges for multi-family, commercial and industrial properties as outlined in Exhibit B of Ordinance 1265.

SECTION 3. Future Assessments:

A. An assessment for those areas of L.I.D. which exceed 15,000 square feet shall be assessed as follows: up to 15,000 square feet as set forth in Section 2. Any square feet over the 15,000 square feet will be assessed for the collection system and a connection charge based on the formula in exhibit B at the rate of Section 2 of this ordinance, amended to reflect the construction cost increase or decrease which is reported in the Engineering News-Record of October 2, 1975 which index value is 2293.00. The time for determining the assessment on area over 15,000 square feet shall be at the option of the owner, either at the time of the assessment of the first 15,000 square feet or at time of development.

B. There shall be a connection charge for each new structure requiring sanitary sewers placed upon the land for which there had been no previous connection charge levied.

SECTION 4. The cost of the improvements made by the construction of sanitary sewers and appurtenances discribed in Exhibit A of Ordinance No. 1265 is the sum of \$3,820,430.21.

Read the first time this 20th day of October, 1975, and moved to second reading by unanimous vote of the City Council.

11/1/75

TO BE DELETED

I

Read the second time and adopted by the City Council this 20th day of October, 1975.

b (14)

Signed by the Mayor this 20th day October, 1975.

Bill Hupp
Bill Hupp, Mayor

ATTEST:

Dorothy E. Farrell
Dorothy E. Farrell, Recorder

Approved as to form:

Myer Avedovech
Myer Avedovech, City Attorney

To BE REPEALED

III B (15)

RESOLUTION NUMBER 9-1969

RESOLUTION REPEALING RESOLUTION NUMBER 38-1967, AMENDING RESOLUTION NUMBER 65-1968, AND ESTABLISHING SANITARY SEWER CONNECTION FEE AND PERMIT AND INSPECTION FEES FOR THE CITY OF MILWAUKIE, OREGON.

BE IT RESOLVED by the Council of the City of Milwaukie, Oregon, that Resolution Number 38-1967 be amended as follows:

"BE IT RESOLVED by the Council of the City of Milwaukie, Oregon, that the connection fee for connecting to a sanitary sewer by any premises shall be as follows:

Single family	\$550
Duplex	\$825
Tri-plex	\$962.50
Apartments, other multiple dwellings and trailer parks:	
first 4 dwelling units	\$1100
each additional unit	\$110

All connection fees not specifically provided for herein shall be established by the City Council.

BE IT FURTHER RESOLVED, that the permit and inspection fee for connecting to a sewer shall be \$15, or the actual cost to the city for said inspection, whichever is greater."

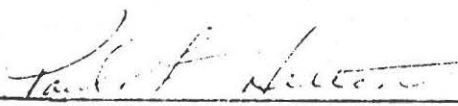
Be it so resolved.

Introduced and adopted by the City Council on the 28th day of April, 1969, at a regular meeting of the City Council.



Frank C. Clore, Mayor

ATTEST:



Paul F. Helton, Recorder

SYSTEMS DEVELOPMENT CHARGES

II b (16)

EXAMPLES

Equation: $SDC = (\text{Base Unit Charge})(\text{Equivalent Units}) \left(\frac{\text{Current ENR}}{3725} \right)$
Engineering News Record on 2 February 1982.

CASE 1, NEW SINGLE FAMILY RESIDENCE, EXISTING LOT

$$\text{Sewer SDC} = (\$890.00)(1) \left(\frac{3725.56^*}{3725} \right) = \$890.13$$

$$\text{Water SDC} = (\$265.00)(1) \left(\frac{3725.56^*}{3725} \right) = \$265.04$$

$$\text{TOTAL SDC} = \$1155.17$$

CASE 2, NEW SINGLE FAMILY RESIDENCE, 7,500 sq.ft. Minor Land Partition
Lot, inside Ordinance 1322 area, no collector assessment.

$$\text{Sewer SDC} = (\$890.00)(1) \left(\frac{3725.56^*}{3725} \right) = \$890.13$$

$$\text{Additional Sewer SDC} = (7,500 \text{ sq.ft.})(\$0.10/\text{sq.ft.}) = \$750.00$$

$$\text{Water SDC} = (\$265.04)(1) \left(\frac{3725.56^*}{3725} \right) = \$265.04$$

$$\text{TOTAL SDC} = \$1905.17$$

CASE 3, 64 UNIT APARTMENT, NEW CONSTRUCTION

$$\text{Sewer SDC} = (\$890.00)(64 \times 0.65) \left(\frac{3725.56^*}{3725} \right) = \$37,029.56$$

$$\text{Water SDC} = (\$265.00)(64 \times 0.65) \left(\frac{3725.56^*}{3725} \right) = 11,025.66$$

$$\text{TOTAL SDC} = \$48,055.22$$

SYSTEM DEVELOPMENT CHARGES
EXAMPLES (continued)

III
b
17

CASE 4, NEW 100 UNIT MOTEL WITH 120 SEAT RESTAURANT

$$\begin{aligned} \text{Sewer SDC} &= (\$890.00) \left(100 \times \frac{\text{unit}}{2 \text{ rentals}} + 120 \times \frac{\text{units}}{6 \text{ seats}} \right) \\ &= \frac{(3725.56^*)}{(3725)} = \$62,309.36 \end{aligned}$$

$$\begin{aligned} \text{Water SDC} &= (\$265) \left(100 \times \frac{\text{unit}}{2 \text{ rentals}} + 120 \times \frac{\text{unit}}{6 \text{ seats}} \right) \\ &= \frac{(3725.56^*)}{(3725)} = \underline{\$18,552.79} \\ \text{TOTAL SDC CHARGE} &= \$80,862.15 \end{aligned}$$

CASE 5, 250,000 SQUARE FOOT WAREHOUSE

$$\begin{aligned} \text{Sewer SDC} &= (\$890.00) \left(250,000 \text{ sq.ft.} \times \frac{\text{unit}}{2,400 \text{ sq.ft.}} \right) \\ &= \frac{(3725.56^*)}{(3725)} = \$92,722.26 \end{aligned}$$

$$\begin{aligned} \text{Water SDC} &= (\$265) \left(250,000 \text{ sq.ft.} \times \frac{\text{unit}}{2,400 \text{ sq.ft.}} \right) \\ &= \frac{(3725.56^*)}{(3725)} = \underline{\$27,608.31} \\ \text{TOTAL SDC} &= \$120,330.57 \end{aligned}$$

CITY OF MILWAUKIE
BILLS PAYABLE FEBRUARY 16, 1982

IV a ①

1.	A & B Automotive	25.65	7-	25.65
2.	AM Multigraphics	12.60	1-42	12.60
3.	ASE Supply, Inc.	135.36	7-	135.36
4.	Able Equipment, Inc.	36.00	7-	36.00
5.	Alder Street Clock Shop, Inc.	55.00	1-70	55.00
6.	Allen's Press Clipping Bureau	27.00	1-21	27.00
7.	American Management Assoc.	24.00	1-21	24.00
8.	Appro Northwest	20.00	1-53	20.00
9.	Asphalt Institute	4.00	1-92	4.00
10.	Bailey, Dick	22.65	1-61 ✓	22.65
11.	Baker & Taylor	50.60	1-70	50.60
12.	Baker & Taylor	103.05	1-70	103.05
13.	Baldwin, Lyle	70.00	7-	70.00
14.	Ballard, Dick	511.00	1-22	511.00
15.	Blake, Moffitt & Towne	221.35	1-42	55.60
			1-62 ✓	165.75
16.	Boise Cascade Office Products	10.06	1-53	10.06
17.	The Bookmen, Inc.	261.73	1-70	261.73
18.	R.R. Bowker	78.15	1-70	78.15
19.	Broadsheet Publications	10.95	1-70	10.95
20.	Brodart, Inc.	17.33	1-70	17.33
21.	Bud's Custom Upholstery	80.00	1-94	40.00
			7-	40.00
22.	Bureau of Governmental Research & Service	4.50	1-41	4.50
23.	Childers Corporation	213.95	1-41	213.95
24.	Citizens Photo	47.00	1-52	47.00
25.	Clackamas Garbage Co., Inc.	78.70	1-22	78.70
26.	Clackamas Water District	116.25	1-22	98.25
			1-94	18.00
27.	Clean One	39.65	1-22	39.65
28.	Clothing Allowances	3,375.00	1-62 ✓	3,375.00
29.	Columbia Equipment	400.00	20-	400.00
30.	Consolidated Supply	456.78	30-	456.78
31.	Contemporary Images	25.00	1-52	25.00
32.	Cunningham Associates, Inc.	193.40	30-	193.40
33.	Clackamas Cty Assessor	50.00	1-21	12.50
			1-41	12.50
			1-80	12.50
			1-92	12.50
34.	Clackamas Cty Bar Assoc.	25.00	1-30	25.00
35.	" " Department of Environmental Services	114.97	4-	114.97
36.	Clackamas Cty. Fire Dist. #1	4,209.47	1-62 ✓	4,209.47
37.	" " " " "	20.00	1-62 ✓	20.00
38.	" " Recorder	12.00	1-30	12.00
39.	" " Service Dist.	52,701.14	1-22	60.50
			20-	52,640.64
40.	Dick's Concrete Service	235.20	4-	78.40
			20-	78.40
			30-	78.40

CITY OF MILWAUKIE
BILLS PAYABLE FEBRUARY 16, 1982

IV a (2)

41.	Dixon, Robert	17.50	1-62✓	17.50
42.	Eades, Greg	17.45	1-30	17.45
43.	Electrical Construction Company	314.65	1-62✓	314.65
44.	Erickson, Gordon	66.00	1-41	66.00
45.	Executive Dept. Executive Bldg.	819.00	1-53	819.00
46.	Far West Office Products	41.56	1-41	36.36
			1-42	5.20
47.	Fire Engineering, Book Dept.	39.90	1-63✓	39.90
48.	First State Bank	196.24	1-52	98.12
			1-70	98.12
49.	Fred Meyer	32.67	1-92	32.67
50.	Gaylord Bros., Inc.	83.80	1-70	83.80
51.	Goldsmith	68.05	1-62✓	68.05
52.	Graphic Arts Supply Co.	190.11	1-42	190.11
53.	Hyneman, Glorianne C. RN	191.10	1-22	191.10
54.	Jafco	238.91	1-22	149.94
			1-62✓	88.97
55.	Jury Fees	60.00	1-23	60.00
56.	Kovak, Leonard	500.00	1-30	500.00
57.	Krider, K.D.	44.90	1-53	44.90
58.	League of Oregon Cities	60.00	1-30	60.00
59.	Loy Clark Pipe Line Co.	4,270.00	6-	4,270.00
60.	McCall Oil & Chemical	4,976.35	GL	4,976.35
61.	McFarlane Bark	46.75	1-94	46.75
62.	Main Street Cleaners	641.85	1-52	574.80
			1-61✓	2.01
			1-62✓	60.35
			1-63✓	4.69
63.	Marriott Corporation	493.00	1-62✓	284.00
			1-63✓	209.00
64.	Miller, Nash, Yerke, et al	1,735.84	1-21	1,735.84
65.	Milwaukie Automotive Service	2,643.00	3-	2,643.00
66.	" Firestone	29.30	7-	29.30
67.	" Glass	41.79	1-43	41.79
68.	" Lumber	213.22	1-53	39.54
			1-62✓	4.98
			1-94	10.20
			3-	144.25
			20-	7.12
			30-	7.13
69.	Milwaukie Tour and Travel	758.00	1-62✓	758.00
70.	Moore Business Forms	46.99	1-41	46.99
71.	Motorola, Inc.	1,840.25	3-	1,840.25
72.	The New Review	24.95	1-24	24.95
73.	" " "	26.00	1-20	9.00
			1-70	17.00
74.	Northwest Copy Products	840.00	1-51	420.00
			1-70	420.00
75.	Northwest Hotel Supply	491.20	1-62✓	491.20

CITY OF MILWAUKIE
BILLS PAYABLE FEBRUARY 16, 1982

IV^a ③

76.	Northwest Law Enforcement Equip.	86.00	1-62 ✓	86.00
77.	Northwest Natural Gas	1,367.55	1-70	527.42
			4-	447.86
			30-	392.27
78.	Nudelman's	411.00	1-52	411.00
79.	OAPI	25.00	1-21	25.00
80.	Oak Lodge Sanitary District	420.00	20-	420.00
81.	Oregon ARMA	135.00	1-21	135.00
82.	Oregon Association for Court Administration	40.00	1-23	40.00
83.	Oregon Special Libraries Assn.	30.00	1-70	30.00
84.	Oregon State University	120.00	1-21	120.00
85.	PGE	3,230.32	1-52	249.59
			1-61 ✓	310.84
			1-70	306.05
			4-	263.79
			20-	62.35
			30-	2,037.70
86.	Pacific Coast Laundry	320.75	1-43	24.00
			1-62 ✓	20.25
			1-70	27.00
			4-	83.16
			20-	83.17
			30-	83.17
87.	Pacific Northwest Bell	17.28	1-62 ✓	17.28
88.	Pacific Northwest Bell	1,269.72	1-52	36.12
			1-53	566.40
			1-61	176.94
			1-70	120.17
			4-	247.89
			20-	81.50
			30-	40.70
89.	Pacific Water Works Supply	90.73	30-	90.73
90.	Petty Cash	149.17	1-1	2.50
			1-21	10.00
			1-30	19.02
			1-41	5.37
			1-43	2.94
			1-51	.25
			1-52	27.83
			1-53	7.72
			1-92	5.25
			7-	48.97
			30-	19.32
91.	Pitney Bowes	155.00	1-41	155.00
92.	Pixler Auto Parts	203.94	1-62 ✓	74.70
			3-	92.74
			7-	36.50

CITY OF MILWAUKIE
 BILLS PAYABLE FEBRUARY 16, 1982

IV a (4)

93.	Platt Electric Supply	51.31	1-62✓	51.31
94.	Portland Road & Driveway	559.50	1-94	60.00
			4-	399.50
			30-	100.00
95.	Portland Stores	259.49	1-43	26.07
			1-53	26.26
			1-62✓	17.91
			1-70	18.21
			7-	24.50
			20-	73.27
			30-	73.27
96.	Radio Shack	379.00	1-22	379.00
97.	Reading Enrichment Co.	35.42	1-70	35.42
98.	Robben Oil Company	473.77	1-43	473.77
99.	Rock Creek Sand & Gravel	372.50	4-	317.50
			30-	55.00
100.	Rook, Roger	190.80	1-23	190.80
101.	Rossman's Landfill	58.00	4-	58.00
102.	Safety Kleen	35.75	4-	11.91
			20-	11.92
			30-	11.92
103.	SA-SO	25.43	20-	12.71
			30-	12.72
104.	Schanaker, Ronald	10.90	1-51	10.90
105.	Shell Oil	51.48	1-21	51.48
106.	Southgate News Agency	35.88	1-21	17.94
			1-61✓	17.94
107.	Southpark Industries, Inc.	118.09	7-	118.09
108.	Stevens Automotive	554.12	7-	554.12
109.	Sunnyvale	3.00	1-70	3.00
110.	Talos Systems, Inc.	105.15	1-62✓	105.15
111.	Truck Wrecking Yard	45.00	20-	22.50
			30-	22.50
112.	Tap Plastics, Inc.	48.60	1-53	48.60
113.	Turner, Ted	100.00	1-23	100.00
114.	Tri-County Training Officers Assn.	20.00	1-63✓	20.00
115.	Union Oil	668.20	7-	668.20
116.	URS	13.11	1-62✓	13.11
117.	University of Washington	88.00	7-	88.00
118.	Valley Communications	969.20	1-52	577.85
			1-53	65.00
			1-62✓	161.62
			1-91	14.51
			1-93	40.00
			1-94	21.01
			4-	70.33
			30-	18.88

TU 25

CITY OF MILWAUKIE
 BILLS PAYABLE FEBRUARY 16, 1982

119.	Water Metrics Co.	327.68	30-	327.68
120.	Western Pump Service	386.50	20-	386.50
121.	Western Fire Equipment	155.15	1-62 ✓	155.15
122.	Western Pacific Construction	256.66	4-	256.66
123.	Wallace Buick AMC/Jeep	60.80	7-	60.80
124.	Wall Street Journal	89.00	1-20	89.00
125.	Water, Feed & Research Lab.	121.00	30-	121.00
126.	Wichita Feed	240.64	1-61 ✓	5.16
			1-62	85.88
			1-94	5.98
			4-	41.80
			7-	9.55
			20-	17.37
			30-	74.90
127.	Wilco Fire Equipment	280.35	1-62 ✓	280.35
128.	Wilcox Printery	18.00	1-42	18.00
129.	Waterworks Supplies	10.14	30-	10.14
130.	Wilson, H.W.	70.00	1-70	70.00
131.	Zellerbach	199.84	1-41	81.84
			1-62 ✓	118.00
		\$101,753.74		\$101,753.74

CHART OF ACCOUNTS
FUNDS, DEPARTMENTS & DIVISIONS Effective July 1, 1981

CITY COUNCIL	01-10	BONDED DEBT FUND	02
CITY MANAGER'S OFFICE	01-21	EQUIPMENT RESERVE FUND	03
COMMUNITY SERVICE	01-22	STATE TAX STREET FUND	04
MUNICIPAL COURT	01-23	IMPROVEMENT BOND SINKING FUND	05
GENERAL GOVERNMENT	01-24	STREET IMPROVEMENT FUND	06
CITY ATTORNEY	01-30	EQUIPMENT REPAIR FUND	07
FINANCE	01-41	BIKE AND FOOTPATH FUND	09
PURCHASING	01-42	FIXED ASSET ACCOUNT GROUP	10
CITY HALL	01-43	REVENUE SHARING FUND	12
POLICE ADMINISTRATION	01-51	COMMUNITY DEVELOPMENT GRANT FUND	13
" FIELD SERVICE	01-52	SEWER FUND	20
" SUPPORT SERVICE	01-53	WATER FUND	30
FIRE ADMINISTRATION	01-61		
" SUPPRESSION	01-62		
" PREVENTION	01-63		
LIBRARY	01-70		
PLANNING	01-80		
PUBLIC WORKS ADMINISTRATION	01-91		
" " ENGINEERING	01-92		
" " BUILDING	01-93		
" " PARKS	01-94		

ORDINANCE NUMBER _____

IV b ①

AN ORDINANCE OF THE CITY OF MILWAUKIE, OREGON DEFINING OFFENSES AND PRESCRIBING PENALTIES.

THE CITY OF MILWAUKIE DOES ORDAIN AS FOLLOWS:

Section 1. Discharge of Weapons.

(a) Except at firing ranges approved by the Chief of Police, no person other than a peace officer shall fire or discharge a gun, including spring or air-actuated pellet guns, air guns, or BB guns, or other weapon which propels a projectile by use of gunpowder or other explosive, jet or rocket propulsion.

(b) The provisions of this section shall not be construed to prohibit the firing or discharge of a weapon by any person in the defense or protection of his property, person or family, or as specifically authorized by the Chief of Police.

Section 2. Fire Control.

(a) No person, unless authorized by the Fire Chief or Water Superintendent, may unfasten, open or draw water from, or otherwise interfere with, any fire hydrant or interfere with a fire alarm device used or maintained by the city.

Section 3. Penalties. A violation of this ordinance shall be punishable by a fine not to exceed \$750.

Read the first time _____, 1982, and moved to second reading by _____ vote of the City Council.

Read the second time and adopted by the City Council _____, 1982.

Signed by the Mayor _____, 1982.

Joy Burgess, Mayor

ATTEST:

Laurie Perkin, City Recorder

Approved as to form:

Greg Eades

Greg Eades City Attorney

M E M O R A N D U M

IV
b
②

TO: Greg Eades, City Attorney
FROM: ~~R~~ Ron Schanaker, Police Chief
DATE: January 13, 1982
SUBJECT: CITY ORDINANCE - DISCHARGE OF WEAPONS

With the repeal of Ordinance No. 1257, it has become apparent that Section 9 of the Ordinance, relating to the discharge of weapons, was without an overlapping applicable ORS section. To insure the continued safety of our citizens, and to control the discharging of weapons within the city limits, I am requesting that an ordinance be drafted and implemented specifically delineating the issues and types of weapons as described in Section 9, sub-section (1) and (2) of the previous city ordinance.

RCS:jh

A similar problem exists with unauthorized use of fire hydrants. I've included that offense also in the enclosed ordinance.

Greg Eades

MEMORANDUM

IV d
February 12, 1982

TO: CITY COUNCIL

FROM: CITY RECORDER

SUBJECT: APPOINTMENT OF CITY MANAGER PRO TEM

On February 21, 1982, Dick Bailey's appointment as City Manager Pro Tem will expire. Under the City Charter regulations, he is allowed one three month extension.

If it is Council's desire that Mr. Bailey continue as City Manager Pro Tem, that appointment should be made at the February 16 Council meeting.



Laurie Perkin
City Recorder

MILWAUKIE
CITY COUNCIL MEETING
February 2, 1982

V₂ ①

COUNCIL CHAMBERS

1401st Meeting

At 6:40 p.m. prior to the regular Council meeting at 7 p.m. the City Council met to interview candidates for appointment to the Budget Committee.

Present: Mel Paulson Roger Hall
Wallace Bischoff Donald Graf
Mayor Joy Burgess

Also Present: Laurie Perkin, Secretary
Jo Durand, Administrative Assistant

The following persons were interviewed:

Alfred Liane, 4809 SE Montoe Street
Kenneth Upton, 11175 SE 30th

The one thousand four hundred and first meeting of the Council of the City of Milwaukie, Oregon was held at 7 p.m. on February 2, 1982 with the following councilors present:

Mel Paulson Donald Graf
Wallace Bischoff Roger Hall
Mayor Joy Burgess

Also present:

Richard D. Bailey, City Manager Pro Tem Gordon Erickson
Greg Eades, City Attorney Finance Director
Steve Hall, Public Works Director Laurie Perkin, Sec'y
Topaz Faulkner, Planning Director

AUDIENCE PARTICIPATION

The following people spoke in support of the Senior Services Serial Levy: Cathryn Boyles, Friends of The Milwaukie Center; Irene Suchland, Center Advisory Board; Doris Olson, Senior Citizens Advisory Commission; Ralph Groener, Clackamas County Board of Commissioners.

Jane Tomlin, 4760 SE Logus Road, answered questions concerning the levy; the amount of money going to the cities and the kinds of services provided which would be as stated in the levy.

The following people spoke in opposition to the levy:

Arnold Callan, Wood Avenue; James Backenstos, 3626 SE Harrison; Bill Hupp, 2626 Washington Street.

There was general discussion on the difference in the tax rate if the levy passed. Graf pointed out that if the levy passed, the Center would get over twice as much money as the city could provide through their budget and the tax rate for Milwaukie residents would be slightly less. It was MOVED by Graf, SECONDED by Hall, that the Council support the Senior Services Serial Levy. The MOTION CARRIED with the following roll call vote: AYES: Paulson, Bischoff, Graf, Hall. NO: Burgess.

Cable T.V. Report

City Attorney reported that several firms have expressed interest in the city franchise and have submitted the \$2000 non-refundable fee. He requested that the Council not ask for details at this point however, since there have been very few discussions and it would not be in the best interests of the city to make it known what companies are

city chose to change the traffic pattern of the other streets, that was alright with them.

Pete Sinclair, Bank of Milwaukie, presented a memorandum dated February 1, 1982, from the Milwaukie Business Association, recommending acceptance of the Chevron site. The recommendation contained a list of eight requirements to be agreed upon between the city and Tri-Met.

There was more discussion on the problems involved in relocation. Steve Hall, Public Works Director, endorsed the second site and said that there were very few sites in Milwaukie where the Transit Center could be located. Time was running out, said Hall, and staff was recommending that the Council approve the site, the plan in concept, and the requirements listed by the Milwaukie Business Association. Mr. Floyd Jones, owner of the Chevron Gas Station, asked the Council to consider another site, since he did not want to move and would have problems relocating.

There was more discussion on the design of the plan and possible parking problems as a result of the Transit Center. It was MOVED by Paulson, SECONDED by Hall, that the Council approve site # 2 as proposed by Tri-Met, including recommendation by Steve Hall, that Council accept the concept plan, authorize Tri-Met to proceed with the grant application and accept recommendations of the Milwaukie Business Association. MOTION CARRIED unanimously.

Request to serve liquor at The Milwaukie Center

Nan Hermann, John Inskeep Environmental Learning Center, addressed the Council, requesting permission to serve wine at the Center. Their organization would provide security guards and a refundable deposit. Sara Hite, Center Director, has prepared memo dated February 2, recommending that no exceptions be made to the present policy regarding alcohol until more research could be done and a new policy formulated. It was MOVED by Hall that the matter be tabled until the next Council meeting. Jo Durand explained that The Center Advisory Board wanted direction from the Council regarding alcohol use at the Center. Bailey offered the suggestion that the Council make an exception for the John Inskeep Environmental Learning Center and consider a proposed policy at a later meeting. Hall WITHDREW the motion. It was MOVED by Graf, SECONDED by Bischoff, that the Learning Center be allowed to serve wine on a one time basis. MOTION CARRIED unanimously.

Offer to purchase property

It was MOVED by Paulson, SECONDED by Bischoff, that the city accept Chuck Swan's offer to purchase property at 32nd Street as outlined in his agreement. Graf announced a potential conflict of interest. The MOTION CARRIED with the following roll call vote: AYES: Paulson, Bischoff, Burgess, Hall. ABSTAIN: Graf.

involved. Eades said that Liberty had not yet paid the non-refundable \$2000 fee and that since he had assured the other companies involved that the city's intentions were to treat each application equally and for this reason, even though Liberty did pay the initial fee, he did not think that the city should negotiate with them at this time if they refuse to pay the additional \$2000.

Sylvia Sycamore, Liberty T.V. representative, said that Liberty felt that they were being penalized for being the first company to bid. She did not agree that Liberty should have to pay two fees.

Hall said that he was concerned that the city be fair with Liberty and would be in favor of waiving the additional fee. It was MOVED by Hall, SECONDED by Bischoff, that the Council waive the \$2000 fee, making it \$200 with the purpose of equalizing the amount paid by other companies; that the City Council go on record as being favorable to Liberty's continued participation; that Council instruct staff to conduct the negotiating process in such a manner as to insure that all companies receive equal consideration. MOTION CARRIED unanimously.

LEGISLATION

Tri-Met Transit Center

Planning Director said that Tri-Met was going to make a recommendation on the site of the transit center and was requesting that the city council make a decision tonight on that recommendation.

Rick Gleason, Tri-Met, said that after conferring with both the businessmen and city staff, Tri-Met was recommending the Chevron site, between Jackson and Monroe.

Jack Baker, representative of Chevron, expressed disappointment in the selection of the Chevron site, saying that the Company had long range plans for this site and they did not want to move. Burgess asked City Attorney what the role of the city should be in a matter of this sort. Eades said that the city should not take an active role. Council was being asked only to give tentative approval to a site.

Bill McDonald, 10851 SE Main, expressed concern about the maintenance of this facility. He said that the city needed assurances on some controls.

Rick Gleason said that Tri-Met would take the lead in any land acquisition process. They are required to submit a plan with the grant application. As far as maintenance was concerned, there would probably be some sort of deal worked out with Greyhound to take care of the maintenance. He said that Tri-Met is also required to come up with a relocation plan and will reimburse the property owners for the costs incurred.

There was general discussion on the one-way grid. Rick Gleason from Tri-Met said that Monroe Street would be the only street that it would be necessary to change to two-way as far as Tri-Met was concerned but if the

Recommendation for Utility Rate Increases

Public Works Director has prepared report dated January 27, 1982, recommending water and sewer rate increases. It was MOVED by Graf, SECONDED by Hall to extend the meeting 20 minutes. MOTION CARRIED unanimously.

Public Works Director broke down the cost of the increases and talked about alternatives, one of which would be to cut services.

Ted Havlicek, 1520 SE Eton Lane, presented a list of suggestions for Water service costs/rates to the City Council. It was MOVED by Graf, SECONDED by Hall, that a Public Hearing be held on rate increases in water and sewer rates at the next council meeting on February 16, 1982. MOTION CARRIED unanimously. There was concurrence by the Council that the information be sent to the Key Communicators.

Systems Development Charges

Public Works Director has prepared a memo dated January 27, 1982 recommending acceptance of Systems Development Charges. Hall explained that these charges would have to do with new construction. He requested that staff be directed to come up with an ordinance to implement these charges at the next meeting. It was MOVED by Graf, SECONDED by Bischoff that the Council accept the recommendation as stated in Hall's memo. MOTION CARRIED unanimously.

Appointment to Budget Committee

It was MOVED by Paulson, SECONDED by Burgess, that Alfred Liane be nominated for the Budget Committee. It was MOVED by Graf, SECONDED by Hall, that Kenneth Upton be nominated for the Budget Committee. Kenneth Upton was appointed to the Budget Committee by the following vote: voting for Liane: Paulson, Burgess. voting for Upton: Graf, Hall, Bischoff.

Payment of Bills

It was MOVED by Graf, SECONDED by Hall, that the bills listed for February 2, 1982 be approved for payment. MOTION CARRIED unanimously.

It was MOVED by Graf, SECONDED by Burgess, that the meeting be extended for 20 minutes. MOTION CARRIED with the following roll call vote: AYES: Bischoff, Burgess, Hall, Graf. NO: Paulson
ORDINANCE 1513 REQUIRING AUTOMATIC SPRINKLER SYSTEMS

Bailey explained that the ordinance was an attempt to get private industry to share responsibility for fire protection. There was discussion regarding insurance rates and cost of system. It was MOVED by Hall, SECONDED by Graf, to read Ordinance Number 1513 (AN ORDINANCE OF THE CITY OF MILWAUKIE, OREGON, REQUIRING AUTOMATIC SPRINKLER SYSTEMS IN CERTAIN STRUCTURES) the first time by title only. MOTION CARRIED unanimously. It was MOVED by Graf, SECONDED by Hall to read the ordinance the second time by title only. MOTION CARRIED unanimously. It was MOVED by Graf, SECONDED by Hall to adopt Ordinance Number 1513. MOTION CARRIED with the following roll call vote: AYES: Paulson, Bischoff, Burgess, Hall, Graf. NOES: none.

Recommendation for increased fees at Milwaukie Center
It was MOVED by Graf, SECONDED by Paulson, that the Council accept the recommendation of the Center Advisory Board regarding increased fees at The Milwaukie Center. MOTION CARRIED unanimously.

There was council concurrence that there be a public hearing for systems development charges at the February 16 meeting.

CONSENT AGENDA

It was MOVED by Paulson, SECONDED by Graf, that the Consent Agenda be approved. MOTION CARRIED unanimously.

Community Development Block Grant

Planning Director has prepared memo dated February 2, 1982, requesting that the city rescind previous approval of CDBG request, and direct staff to develop a new grant application for funds to improve the downtown. It was MOVED by Graf, SECONDED by Bischoff to rescind the previous approval of CDBG request and direct staff to prepare new application for grant. MOTION CARRIED unanimously.

The meeting was adjourned at 10:40 to go into executive session under ORS. 192.660 (1) (a) to discuss employment of staff.

The executive session adjourned at 11 p.m.

Laurie Perkin, City Recorder

ATTEST:

Joy Burgess, Mayor

MILWAUKIE
CITY COUNCIL MEETING
February 5, 1982

IV
a
6

MILWAUKIE CENTER

6:00 p.m.

An Executive session of the City Council of the City of Milwaukie was held on February 5, 1982 under ORS 192.660 (1) (a) to consider employment of staff.

The meeting was recessed at 7 p.m.

The meeting resumed at 9 p.m. and was adjourned at 10:20 p.m.

Laurie Perkin

ATTEST:

Joy Burgess, Mayor

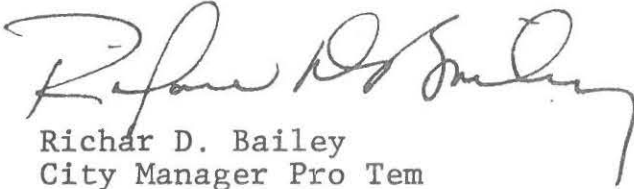
MEMORANDUM

V_b

February 11, 1982

TO: HONORABLE MAYOR AND CITY COUNCIL
FROM: DICK BAILEY, CITY MANAGER PRO TEM
SUBJECT: REQUEST TO RETAIN CONSULTANT

I respectfully request Council's permission to retain Cogan and Associates, 71 SW Oak Street, Portland, as consultants in land use planning matters currently anticipated by the city. I request that the City Council authorize expenditures for such consultant work not to exceed \$8000.



Richard D. Bailey
City Manager Pro Tem

RDB/lp

March 12, 1982

~~Sumner~~ Sharpe
Cogan and Associates
71 SW Oak Street
Portland, OR 97204

Dear Sumner:

On February 16, 1982, the City Council did take action authorizing retention of Cogan and Associates as consultants. in land use matters and the expenditure of up to \$8000 for the contract.

I look forward to working with you.

Cordially,

Richard D. Bailey
City Manager Pro Tem

REB/lp


M E M O R A N D U M

Vc

TO: Dick Bailey, Interim City Manager
FROM: Ron Schanaker, Police Chief
DATE: February 8, 1982
SUBJECT: APPLICATION FOR LIQUOR LICENSE RENEWAL

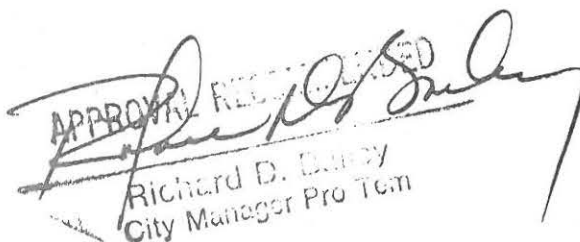
State and local law enforcement records fail to reflect any negative information on the below-listed applicant. I therefore find no reason to deny issuance of the requested license renewal.

APPLICANT: Sandy Crispin
C. V. Crispin DBA
VICS TAVERN
10901 S.E. McLoughlin Blvd
Milwaukie, Oregon 97222



Ronald C. Schanaker
Chief of Police

RCS:jh

APPROVED RECEIVED

Richard D. Bailey
City Manager Pro Tem

INVOICE

July 1, 1982

City of Milwaukie

Population 17,930

Please remit to:

LEAGUE OF OREGON CITIES

P.O. Box 928

Salem, Oregon 97308

Phone 588 6466

IV do

ANNUAL SERVICE CHARGE for the year 1982 @ 27.5¢ per capita

\$ 4,930.75

LEAGUE SERVICES

INFORMATION - INQUIRIES - CONSULTATION - LEGISLATIVE INFORMATION AND SERVICE - TRAINING
REGIONAL MEETINGS - ANNUAL CONFERENCE - NEWSLETTER - SPECIAL BULLETINS



League of Oregon Cities

Id ②

SALEM: Local Government Center, 1201 Court Street N.E., P.O. Box 928, Salem 97308, Telephone: (503) 588-6466

EUGENE: Hendricks Hall, University of Oregon, P.O. Box 3177, Eugene 97403, Telephone: (503) 686-5232

Salem, Oregon
February 4, 1982

Mayor Joy Burgess
12208 SE 22nd. Ave.
Milwaukie, OR 97222

Mayor Burgess:

The purpose of this letter is to advise you of the city's League dues for the year beginning July 1, 1982. (The information invoice is being sent directly to your city manager or city recorder.) As announced earlier, the amount includes an increase of 2.5 cents per capita with a corresponding increase in minimum dues from \$60 to \$66 per year.

This increase is necessary for several reasons. In last year's dues letter, League President Keller explained that there had been enormous inflationary increases since the previous dues increase in 1977. At the same time, high interest rates paid on the League's cash carryover substantially increased interest income as a portion of the League's budget. This was a happy event while it occurred. But inflation has caused the League to dip into its reserves to continue operations. The combination of having less money to invest and interest rates that have declined over the past year have made it clear that we were depending increasingly on an unreliable revenue source. While a larger dues increase was justified last year to offset projected future deficits, the executive committee chose to spread needed increases over two years rather than passing on a single, larger increase all at once.

Despite grim state and national news, 1981 was a successful year for the League in delivering services to cities. Several new programs were begun and existing programs were expanded, in spite of the longest legislative session in history--a session that was very successful for cities. A copy of the annual report, which was distributed at the League convention and included in the January, 1982, Newsletter, outlined League services to cities during 1981. Another copy is enclosed with this letter to help you in explaining the League's services both to council members and members of your budget committee. If you desire additional copies of the annual report, please don't hesitate to let us know.

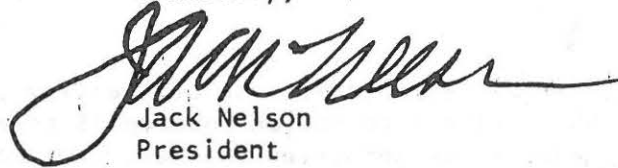
It is appropriate to ask why, in these uncertain economic times, the League does not just tighten its belt and forego a dues increase. The League's executive committee considered that option carefully and rejected it. Without the dues increase or cutting staff, the League would face a substantial deficit beginning in the 1983-84 fiscal year. The executive committee chose not to reduce League programs, feeling that in times like these, League lobbying, training, and technical assistance services are more critical than ever. 1981 was a challenging and trying year. But it was only

V d (3)

the beginning. 1982 and the next few years promise to be nothing less than revolutionary for local governments. The League will play a critical role in helping cities meet the challenges ahead.

Your continued support for the League is an important investment for your city and is appreciated by members of the executive committee. In return for that support, we pledge to work harder than ever to make sure that the League meets the challenge of serving the needs of all of Oregon's cities in the most efficient and economical fashion possible. Should you have any questions about the dues or League services, please feel free to contact me or the staff at the League office. We'd be pleased to respond to your questions or comments. In the meantime, we'll count on you to keep the cities' voice strong and include League dues in next year's budget.

Sincerely,



Jack Nelson
President

SCB:bas
cc: City Managers/Recorders

MILWAUKIE
BUDGET COMMITTEE MEETING
February 5, 1982

VII a (1)

THE MILWAUKIE CENTER

7 p.m.

Present:

Joy Burgess, Mayor	Georgia Brakeman, Sec'y
Mel Paulson	James Backenstos
Roger Hall	Kenneth Upton
Donald Graf	Shirley Brown, Chairman
Wallace Bischoff	Absent: Joe Bernard

Also present:

Richard Bailey, City Mgr. Pro Tem
Steven Hall, Public Works Director
Gordon Erickson, Finance Director
Topaz Faulkner, Planning Director
Ron Schanaker, Police Chief
Laurie Perkin, City Recorder

The meeting was called to order by Chairman, Shirley Brown, at 7:05 p.m.

Elmer Hodges, 11607 SE 48th, presented a petition requesting that the Animal Control Officer position be full time.

APPROVAL OF MINUTES

It was MOVED by Backenstos, SECONDED by Paulson, that the minutes of the February 1 and 3, 1982 meetings be approved. MOTION CARRIED unanimously by those present.

GENERAL SERVICES

Administration: Personnel costs for the Director, Topaz Faulkner, are the only significant costs in the General Services Administration budget.

Community Services: Sara Hite, Center Director noted some changes in the Community Services budget, explained the outreach program, costs of repairs and maintenance. There was discussion of the Senior Services Serial Levy. If the Levy passed, it would be a direct deduction from this budget. There was discussion on whether Loaves and Fishes should pay for the use of the building. It was MOVED by Backenstos, SECONDED by Brakeman, that the matter of charging Loaves and Fishes for use of the center be referred to the City Council after the vote on the Senior Services Serial Levy. The MOTION CARRIED with the following roll call vote: AYES: Backenstos, Burgess, Bischoff, Graf, Brakeman, Hall, Brown, Upton. NO: Paulson.

Municipal Court: There is no increase in the judge's salary. Professional services has increased because of the salary of the pro tem judge and the court appointed attorneys. the total for these two positions is \$5,000.

Library: The following items were discussed: payment for computer services, copy machine, methods of buying books, salary of custodian and senior librarian, amount of funding from county.

Va ②

Planning: Director talked about staff in Planning Department explaining that the Planning Intern's salary is paid for by a grant. There was discussion on the use of grant monies, for example, the downtown business survey was done through grant money.

Parks: The only change from last year is the hiring of two park aides for the summer as a result of increased park fees. There was discussion on the spraying of trees, improvements made in park grounds and use of grant monies, cost of printing and a volunteer program.

POLICE

Administration: There was an increase in professional services. Testing costs are now charged to departments rather than personnel. Chief would like to attend conference in September. There was discussion on the new Community Service Officers; what their duties would be, the type of uniform to be worn and the type of training they would have.

The following items were discussed: Transfer of Manager Support Services, amount of mileage on patrol cars before they are turned in, selling the police building, painting of the police building.

FIRE

There were decreases in Administration, Suppression and Prevention due to the fact that the Fire Department is doing all their own preventative maintenance. The major costs in the Fire Department are in the Suppression Division. The following items were discussed: Organizational structure, reduction in overtime costs, donations for emergency vehicle, EMT program, fire equipment and costs, the setting up of a central dispatch center together with the police department, the 911 emergency system, a new training program through the Fire Academy.

PUBLIC WORKS

Administration and Engineering are supported by street, water and sewer funds. The Building Division is supported by building permit fees. The following items were discussed: loss of assistant building inspector, decrease in construction, street repair fund.

There were no further questions.

It was MOVED by Backenstos, SECONDED by Upton, that the budget be approved as proposed. There was discussion on possible changes under consideration by the state legislature. Bailey suggested that after the legislature meets, if there are any changes affecting the city budget, he would come back to the Budget Committee for direction. MOTION CARRIED with the following roll call vote: AYES: Paulson, Burgess, Bischoff, Graf, Hall, Brakeman, Upton, Backenstos, Brown. NOES: none

The meeting was adjourned at 9:10 p.m.

MILWAUKIE PARKS AND RECREATION COMMISSION

MINUTES January 25, 1982

VI
B

Council Chambers, City Hall

The meeting was called to order at 7:40 P.M. by Chairman Larry Mura. All members were present except Virginia Coyne. Staff present was Randy Westrick. The minutes of the January 11, 1982 meeting were corrected to list Betty Steppan and Wayne Logemann as excused. Then it was moved Dave and seconded John that they be approved as corrected and the motion passed unanimously.

New Business Randy explained that the vacant lot at 32nd and Boyd is being offered for sale by the city. This property was some years ago referred to the Parks Dept as a potential park site. That development never took place. Dave moved that a May 1979 motion to recommend development of the site be rescinded. His motion failed. He then moved that PARC recommend to City Council that the money from the sale of the property be given to PAR Dept. for the purchase of alternate property and/or the development of existing properties. That motion was seconded by Wayne and carried.

Randy showed slides illustrating the problem caused by trees near PGE power lines at Weber Park. PGE has a policy of removing the trees and transferring them to a designated location. It was moved Becky that PGE remove the trees and deliver them to the Milwaukie Community Center to be used in the Center's energy program. The motion was seconded by Dave and carried.

Randy reported that he had been contacted by Clackamas County about their County Drainage District. This involves putting in a series of flood retention ponds to help control flooding. They would like PARC to consider MCP as a site for some of these ponds. Randy explained that it could be a means of developing some areas of the park into more usable space. Possibilities included parking lots, soccer fields, amphitheater and jogging runs on dike tops. PARC members were asked to give some thought to the idea and Randy will continue to research it.

OLD BUSINESS Randy reported he has the "Gift Catalog" organized and it includes the new gazebo for MCP at the site of the now removed Howitzer. He will have a design on the waterfront improvements to present next meeting, the Marine Board has indicated they are ready to go ahead with the project. The City Attorney is still looking into the legal aspects of removing the log boom.

John moved for adjournment at 8:40, it was seconded Wayne and passed unanimously.

WVPC

WILLAMETTE VIEW MANOR, INC.
12705 S.E. RIVER RD. • PORTLAND, OREGON 97222
(503) 654-6581

JAMES G. EDWARDS
Executive Director

WILLAMETTE VIEW MANOR
WILLAMETTE METHODIST CONVALESCENT CENTER
THE MANN HOME

VLC

JAMES G. EDWARDS

Feb 2, 1982

Dear Dick,

Congratulations on the
impressive list of achievements for
the city of Milwaukie in 1981.
As you said in your Key Communicators
letter, the change of attitude is
undoubtedly the most important
factor that was so desperately
needed. Thanks for your good work!

February 3, 1982

Dear Dick and Ron,

Thank you so much for
the talk you presented at
our school on January 14th.
It was both interesting and
informative.

We appreciate your taking
time from your busy schedule
for presentations at schools.

Sincerely,

Larada Johnson, Sec.
Nector Campbell PTA

MILWAUKIE LOAVES AND FISHES
MILWAUKIE, OREGON 97222

VI
E

February 3, 1982

Milwaukie City Council

and

Dick Bailey, City Manager Pro-Tem

City Hall
Milwaukie, Oregon, 97222

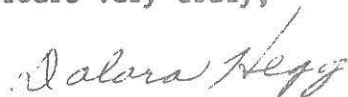
Dear Mayor Burgess and Gentlemen:

It has been a joy serving the people of the community. Being able to provide food and programs to strengthen the bodies and dignity of the seniors has been especially gratifying.

The beautiful Milwaukie Center provides just the right setting for our efforts, for the people who benefit from them, for the many volunteers who help.

Thank you for your cooperation.

Yours very truly,



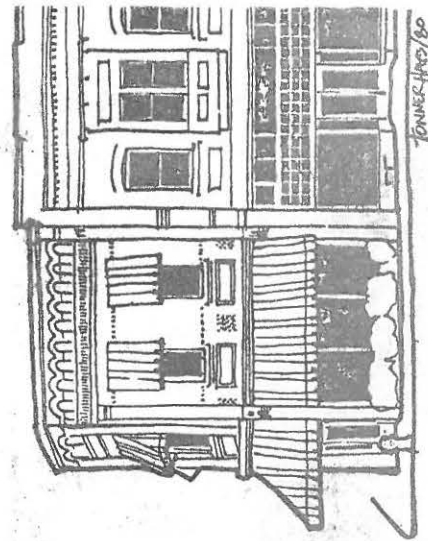
Dolora Hegg, Director
Milwaukie Loaves & Fishes

the OREGON DOWNTOWN
REVITALIZATION COALITION
offers you a one-day look at

SOLVING DOWNTOWN PROBLEMS
for OREGON'S CITIES

Friday, February 26th
9-4:30 pm

in downtown Albany, at the
Old Armory—4th & Lyon Streets



HISTORIC PRESERVATION LEAGUE
OF OREGON
P.O. BOX 40053
PORTLAND, OREGON 97240

Non-Profit
Organization
**U.S. POSTAGE
PAID**
Permit No. 699
Portland, Oregon

Joy Burgess, Mayor
City of Milwaukee
City Hall
10722 SE Main Street
Milwaukee, OR 97222

DOWNTOWN REVITALIZATION CONFERENCE PRE-REGISTRATION FORM

Name _____

Title and Organization _____

Business Address _____

Home Address _____

Telephone: Office _____ Home _____

General Registration Fee \$25.00 — includes lunch and materials

You may also register at the door. *(Registration limited to first 300 people.)*

Please mail this form, with payment to: Downtown Revitalization Coalition, P.O. Box 1146,
Albany, OR 97321 Attn: Meredith Wiley 967-0444

This seminar is designed to assist...merchants, building owners, elected officials, local government staff, chambers of commerce, lenders, community and business leaders...to better deal with downtowns' special problems.

AGENDA:

- 9:00 WELCOME: Don Brudvig—Mayor, City of Albany
- 9:10 INTRODUCTIONS: Bill Wyatt (Seminar Moderator) Director, Association for Portland Progress
- 9:15 GETTING STARTED: Scott Gerloff, Asst. Director, National Main Street Center
Identifying Community Assets/Needs
The Incremental Approach
Initiation & Role of a Downtown Organization
- 10:30 BREAK
- 10:45 ECONOMIC RESTRUCTURING: Jeffrey L. Lamy, MS—Business Economics Inc.
Competing in the retail marketplace
Evaluating the market for office space
Attracting retail operations
• identifying prospective retailers
• approaching chain stores
- 12:00 LUNCH (box lunch available with pre-registration)
Films—"Main Street"
"Signage for Main Street"
- 1:30 PANEL—A brief look at Promotions, New Tax Laws, and Parking: John Tess (Moderator) Grants/Tax Manager, State Historic Preservation Office; Scott Gerloff, NMSC; Dr. T. Allan Comp, Acting Director

Cultural Programs, National Park Service; Eric Blackledge, Corvallis businessman and downtown leader.

- 2:45 BREAK
- 3:00 REVITALIZATION IN ACTION—Ellensburg, Wash., a case study: Larry Nichols, City Councilman-Ellensburg
- 4:00 TODAY'S RESOURCES & WRAP-UP
QUESTIONS: John Merritt, Asst. Director, National Trust for Historic Preservation—Western Regional Office
- 4:30 ADJOURN
- 5:00 NO HOST COCKTAILS AND DINNER is scheduled at Albany's Buzz Saw Restaurant (on the Willamette River) for informal discussions of your city's downtown problems with the speakers and other participants.

(Real estate credit information available at Registration)

About The Speakers:

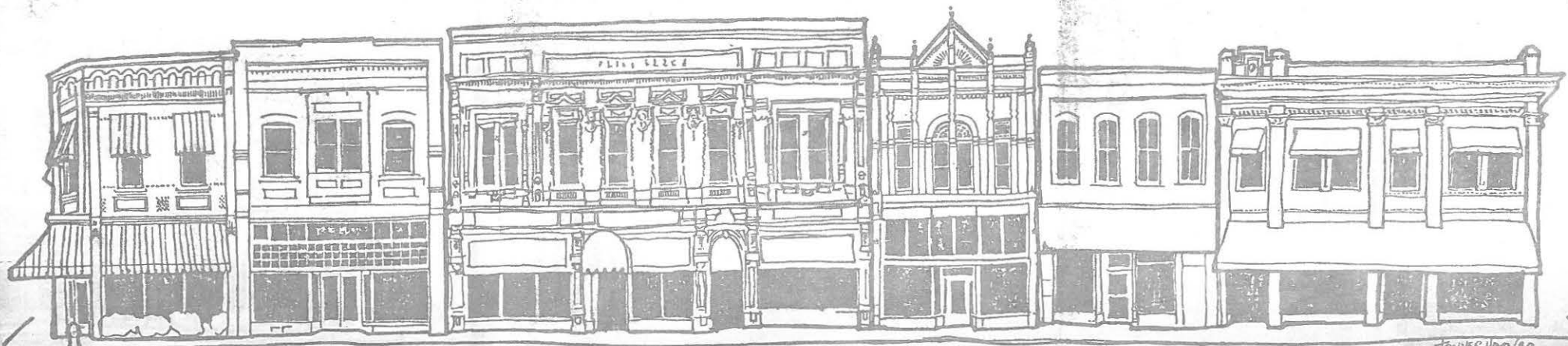
Scott Gerloff is the Assistant Director of the National Main Street Center. He has been in small city (under 50,000) downtown revitalization for more than eight years. First, in charge of the survey and public awareness programs for the South Dakota State Historic Preservation Office, Scott later became downtown manager for one of the three pilot Main Street cities sponsored by the National Trust. He spent three years in this position of Main Street manager for the City of Hot Springs, SD. This was followed by a move to the National Main Street Center as a Program Associate, responsible for the North Carolina and Pennsylvania state-wide programs.

Jeffrey L. Lamy, President of Business Economics, Inc., has over 21 years' research, consulting, and administrative experience in urban land economics, regional and community economic development, feasibility investigations and financial planning for real estate development, business and economic forecasting, and corporate development. During the two years prior to founding BEI, Lamy fulfilled a White House appointment, working with the Governors and agencies of three states for regional economic development.

Larry Nichols was recently elected to his second term as City Councilman in Ellensburg, Washington. He is regional vice-president for the Washington Trust and Washington State's Advisor for the National Trust for Historic Preservation. Active in the community, Larry is Director of the Kittitas County Museum.

The Oregon Downtown Revitalization Coalition was started as a special committee of the Historic Preservation League of Oregon (HPLO). Encouraged to broaden its base, the group has evolved to include civic leaders from Albany, Corvallis, Portland, Sherwood and Grants Pass. Today we are a private coalition receiving some assistance from both the HPLO and the League of Oregon Cities. Our goal is to assist small city revitalization state-wide by establishing a means for resource exchange, education and lobbying.

The Coalition has received funding and assistance to present this seminar to the state from: the Cities of Albany and Corvallis, the Historic Preservation League of Oregon, the League of Oregon Cities as well as several private citizens.





METROPOLITAN SERVICE DISTRICT
827 S.W. HALL ST., PORTLAND, OR. 97201, 803/231-1646

VI 201

February 8, 1982

The Honorable Joy Burgess
Mayor of Milwaukie
10722 S. E. Main Street
Milwaukie, Oregon 97222

Dear Mayor Burgess:

I want to take this opportunity to let you know what I have found in the last three months and where the Johnson Creek Outreach Program is headed. What I have found is that to most of the creekside residents, Johnson Creek is much more than simply a flood hazard or an open drainage ditch. Johnson Creek still supports a healthy population of crawdads, some winter steelhead, trout and salmon. It serves as a corridor for the movement of beaver, coyotes, pheasant, kingfishers, blue herons and, very occasionally, deer. Generations of kids have learned to swim and fish in the creek and a number of its marsh areas serve as wintering grounds for wild water fowl. Johnson Creek, as a free flowing stream in an urban area, is rapidly becoming a unique, scarce and rare resource.

People choose to live along the creek because of the scenery and lifestyle that it offers. I have yet to talk with any long-time resident that wishes to move from the area. To the people along the creek the major issue is resource management, of which flood control is only a part. Any effort to manage the flooding must be done with sensitivity to the natural resource value of the creek. In fact, I have found that people on both sides of the LID fence feel the same way: the last thing that they want to see is Johnson Creek in a culvert or "improved" to resemble the canals in the central valley of California.

Channel Cleaning

The project most mentioned with respect to management of the creek is channel cleaning. I have found places along the creek where, during low flow periods, a previously 25-foot wide

February 8, 1982
Page 2

VI g ②

channel has been narrowed to less than three feet. In addition to deposits of silt, sand and gravel choking the creek, there is also the occasional tire, tree limb and stump, and the ever-present blackberry encroaching on the flow of water.

Cleaning the channel can be done with fish and wildlife management in mind. Silt and debris cover spawning beds and block fish migrations. Habitat diversity is the key to keeping a broad range of wildlife "happy" with the Johnson Creek corridor. Streambanks lined 100 percent by cement, blackberries or anything else cannot provide the different types of habitat needed to support a host of different species.

Channel cleaning would also increase the capacity of the creek to carry floodwaters within its banks. The degree to which simply cleaning the channel would decrease or prevent the flooding cannot be known without a thorough technical study. However, the project proposed by the Corps of Engineers in 1975 relied almost entirely on channel cleaning, with streambank stabilization only in areas that needed it and channel relocation to eliminate bends in the vicinity of 112th-106th Streets. It is fairly safe to say that channel cleaning has the potential for correcting at least a portion of the flooding problem.

Organized channel cleaning has been done as recently as 1980 when high school groups got together to remove trash and debris from several sections of the creek. These efforts help but are not on a large enough scale to cope with the tons of silt, debris and trash clogging the channel. Furthermore, any cleaning effort needs to incorporate a system for ongoing maintenance to protect the investment in creek management made by the community.

Creek Resources Management

The challenge, therefore, is to devise a management program that is consistent with the desire of area residents to maintain the natural resource features of the creek while reducing the risk of damaging floods to property owners and the creek itself. In addition, any program for creek management must be responsive to people's pocketbooks; the costs must be in line with the benefits people believe they are receiving. In effect, the challenge before us is to figure out a way that the desires of local residents for the future of the creek can be translated into a resource management program at little or no cost.

VI 803

One Option

One possible option would be to take the Corps of Engineers up on their offer. Since the early 1950s, the Corps has offered to engage in a flood control and channel management project on Johnson Creek. Essentially, the Corps would do all the initial channel cleaning work at their expense with the understanding that a "local sponsor" would assume responsibility for:

1. securing easements or rights-of-way needed for the project;
2. providing for the relocation or alteration of any buildings, utilities, bridges, roads, etc., in conflict with the project;
3. assuming liability for any damages during the construction phase, except for those due to negligence;
4. maintaining and operating the project after completion;
5. complying with applicable federal laws relating to civil rights and flood control;
6. preventing any future encroachment on the project which might limit its ability to perform its function; and
7. assuming liability for future design and engineering costs should the sponsor fail to perform its duties.

Although becoming a local sponsor for the purposes of the Corps would accomplish an initial channel cleaning at little cost, the responsibilities of the sponsor do involve costs that cannot be avoided. Specifically, maintenance and possibly altering bridges or other structures are likely to be costs billed to the local sponsor.

In assessing these costs, or the cost for any other creek project, the next question is "who pays?" The point most often made by area residents is that those who benefit ought to pay. Because so much of the access to the creek is in private ownership, the benefits of channel cleaning to manage the creek resources will go primarily to creekside residents and those in the adjacent floodplain. It follows that creekside and floodplain residents ought to be the backbone of a local sponsor.

However, it is also true that the entire drainage basin contributes water to the creek during the winter months and that, therefore, the creekside and floodplain residents should not have to be responsible for the whole sponsorship bill. Because there is some publically-owned land along the creek and

VI 204

in the floodplain, local government would have to get involved in a sponsorship project to some extent. This would spread some of the cost.

Yet, two points need to be recognized. First, most people away from the creek do not recognize the resources that creekside and floodplain residents enjoy simply because they have very little access to those resources. Second, drainage is not a process that most people are very interested in unless it affects them directly; most people are not affected by changes in the character of the creek. As people throughout the basin have told me time and again, if creekside and floodplain residents are not interested in doing something, then there is little reason for others to be concerned.

I am inclined to agree. The decision to do anything to the creek rests with the people most directly concerned, and rightfully so. Local governments must be involved, but initially, the decision to move ahead must come from the creekside and floodplain residents.

Next Steps

What I have described above is but one possible option. There are certainly many more. At this point, I am developing as much specific information about different locally inspired and controlled management efforts as I can. I would then like to call a meeting of all of the people that I have been in contact with to consider the potential for some kind of creek management effort, focused on the needs and desires of creekside and floodplain residents. If there is interest in continuing, then I would suggest that a wider group be contacted and a more formal project selection process begin. I would be able to provide technical and administrative support for this effort, but the ultimate direction and control of the project would rest with those called on to pay for at least a part of the improvements.

If there is little or no interest in continuing, then Metro will turn its attention to other water quality issues in the region. We will not pursue and help facilitate a project to manage the creek resources unless there is significant local interest in doing something and in having us help get it rolling.

As you are probably aware, Metro has been experiencing some budgetary problems recently. The result, for this project, is that it is unclear right now how long or how much we can

February 8, 1982
Page 5

VI 2 (5)

contribute. However, should the communities along the creek choose to move forward with a project, we will do all that we can to assure project success.

In the meantime, please discuss the prospect of a locally based and controlled resource management program for Johnson Creek with your friends and neighbors. Johnson Creek is special and it is my hope that its special qualities not be lost. I will be glad to meet with groups or individuals to help get the discussions going and I welcome suggestions, both about what I have described here, as well as for other people that I ought to be talking to.

Thanks again for your patience and time. I look forward to seeing you in the near future.

Sincerely,

Ethan Seltzer
Outreach Project Coordinator

ES/gl
5206B/D1

A handwritten signature in black ink, appearing to read 'Ethan Seltzer', with a long, sweeping horizontal line extending to the right below the name.

CITY OF MILWAUKIE



CITY COUNCIL
in the City Hall • phone 659-5171

February 10, 1982

Ethan Seltzer
Outreach Project Coordinator
Metro
527 SW Hall
Portland, OR 97201

VI 20

Dear Mr. Seltzer:

Thank you for your letter of February 8, 1982, officially notifying me of the project and effort being contemplated to clean up and improve Johnson Creek through a possible flood control and management program.

I will furnish a copy of your letter to the other members of the City Council for their consideration and there may be a discussion on it at our February 16 City Council meeting.

I will be in contact with you in the future if I become aware of any degree of local interest in pursuing these improvement efforts along the creek.

Yours very truly,

Joy Burgess
Mayor

JB/lp



VI
h

**United States
Postal Service**

February 11, 1982

Honorable Joy Burgess, Mayor
City of Milwaukie
10722 S.E. Main
Milwaukie, OR 97222

Dear Mayor Burgess:

In our continuing effort to provide improved postal service, we are developing plans to find alternate quarters for the Milwaukie Branch retail and lockbox operation. Our present post office is too small to provide adequate service to the public. The Postal Service's planning concept is to relocate the delivery operation currently at 2146 Monroe Street to the newly purchased site on Naef Road upon completion of construction. This facility will be known as Portland, Oregon Oak Grove Branch. A full retail operation with lockbox service will be provided for the City of Milwaukie within the preferred site area as follows;

Scott St/Harrison St. - North
Lake Rd. Intersection - South
22nd St. - East
McLoughlin Blvd. - West

Our study indicates that the facility should have 3160 sq.ft. of net interior space on a site of 16,731 sq.ft. We anticipate that the facility will house up to 4 employees and provide up to 19 off-street parking spaces for customers.

At this stage we are seeking your suggestions and comments, as well as your concurrence in locating the facility within the preferred boundaries given above. If you wish, a postal representative will meet with local officials, or attend public discussions, to further review our project plans.

Sincerely

B. W. Luscher, Jr.
MSC Manager/Postmaster
Portland, OR 97208-9998

Agenda items- Council and Manager only.

1. Letter to Greg Eades from Liberty Cable T.V. dated 2-10-82
2. Proposal to assist Milwaukie concerning annexation
3. Letter to council from Eades re Cable T.V.
4. Materials listed that were sent to City Mgr. Selection candidates....

MEMORANDUM

February 12, 1982

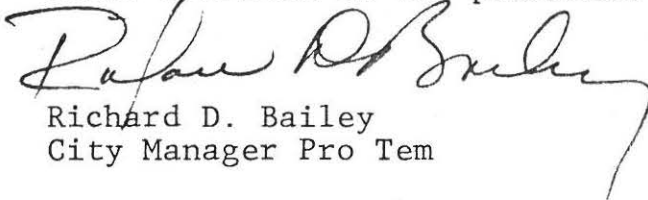
TO: CITY COUNCIL

FROM: DICK BAILEY, CITY MANAGER PRO TEM

SUBJECT: CITY MANAGER SELECTION PROCESS

The attached material has been sent to the four candidates for City Manager, along with a copy of the City Charter, the Comprehensive Plan, the Budget Document and an assortment of press clippings from the last few months.

As you know, Mr. Greenamyre has been replaced by Mr. Shaw and all candidates listed have confirmed their interest in the position.



Richard D. Bailey
City Manager Pro Tem

Congratulations on being selected as a finalist in the City Manager search for the City of Milwaukie, Oregon.

As you will see on the attached schedule, interviews have been scheduled for Saturday, February 20 in the City Hall Council Chambers. Lodging arrangements have been made for you and your spouse at the Sunnyside Inn Motel on SE Sunnyside Road in Clackamas. For those of you who will be arriving at Portland International Airport on Friday, February 19, the city will provide staff to transport you to the Sunnyside Inn. Please advise us of your arrival time. The city will reimburse you, upon receipt, for your travel expenses for you and your wife.

Attached you will find five supplemental questions to be commented upon in writing. Please bring these to the interview with sufficient copies for each of the five council members.

It is anticipated that the City Council will make its selection on or before February 23 and will send two council members to visit cities of present or prior employment of the successful applicant before making its final decision.

Again, congratulations on your selection. I am looking forward to meeting with you and your spouse on February 19.

Sincerely,

Richard D. Bailey
City Manager Pro Tem

P.S. In case you are interested, I have enclosed information regarding car rentals.

February 5, 1982

This letter sent to: Samuel C. Gesko, Jr., 2826 Colter Avenue, Bozeman, Montana 59715; Rocky J. Fluhart, 1516 West Airport Avenue, Lompoc, CA 93436; Jackson B. Haggard, 454 SE Park Hill Drive, Chehalis, Washington 98532; and David Greenamyre, 8621 West 109 Street, Overland Park, Kansas 66210.
Mr. George Shaw, 924 Rosewood Drive, Carpentersville, ILL 60110

ITINERARY

Friday, February 19

Arrive Portland International Airport and/or Milwaukie
City Staff pick-up.

Lodging- Sunnyside Inn- Intersection of I-205 and SE Sunnyside Road.

Saturday, February 20

Interviews- City Hall, 10722 SE Main Street, Milwaukie

8:00 to 8:30	Council Preparation
8:30 to 10:30	Mr. Gesko
10:30 to 12:30	Mr. Fluhart
<u>12:30 to 1:30</u>	<u>Council Lunch</u>
1:30 to 3:30	Mr. Haggard
3:30 to 5:30	Mr. Shaw

Guided Tour of City and Facilities by staff-

8:00 to 10:30	Mr. and Mrs. ^{Brown} Haggard	Ron Schanaker Police Chief
	Mr. and Mrs. Shaw	- Dick Bailey City Manager Pro Tem
1:00 to 3:30	Mr. and Mrs. Gesko-	Dick Bailey
	Mr. and Mrs. Fluhart-	Ron Schanaker

Sunnyside Inn

7:00 to 8:00	Social Hour-	all candidates, spouses and City Council
8:00	Dinner	

LOCAL RENTAL AGENCIES

Weiler Rental & Leasing (National)
12th & Main Streets656-1431
Oregon City, OR 97045

Agency Rent-A-Car
13800 SE Webster Road653-1334
Milwaukie, OR 97222

John Link Pontiac
1404 Main Street
Oregon City, OR 97045656-5285

SUPPLEMENTAL INFORMATION - City Manager Selection

Detail the process you would use in working with staff, community and Council to revitalize an aging commercial core area.

Describe your philosophy in regards to personnel management, labor union relations/contract maintenance, and productivity/motivation.

Explain your concept of senior administrative staff (department head) utilization. Relate your comments to the continuum of authoritarianism to team management.

Comment upon your perception of the role of the City Manager and how it relates to the role of the City Council.

Describe in a conceptual manner innovations useful to a city in an era of "cutback management".

PRESS RELEASE

#####

SUBJECT: CITY MANAGER CANDIDATE INTERVIEWS

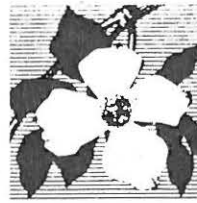
CONTACT: LAURIE PERKIN, CITY RECORDER

On February 20 from 8:30 a.m. to 12:30 p.m. and from 1:30 p.m. to 5:30 p.m., the City Council will meet in executive session in the Council Chambers at City Hall to interview candidates for the position of City Manager. Following the interviews the City Council will meet for dinner with the candidates and their wives at the Sunnyside Inn at 7:00 p.m.

CITY HALL • 10722 S.E. MAIN STREET • MILWAUKIE, OREGON 97222 • TELEPHONE (503) 659-5171

vk

CITY OF MILWAUKIE



OFFICE OF THE CITY ATTORNEY
in the City Hall • phone 659-5171

February 10, 1982

William Aitchison
1000 SW Third Avenue
Portland, OR 97204

Subject: 1982-83 Negotiations, I A F F Local 1159

Dear Will:

I've reviewed your offer of January 21 and decided to continue the city's proposal for a freeze on wage increases. While I appreciate your thoughts and research on ways to save the department money in order to free up funds for salaries, it seems to me that the city is in the best position to determine how tax dollars are spent. If in fact there will be substantial savings in the Fire Department budget this year, the Budget Committee and City Council will determine whether those funds should be allocated to the Fire Department or some other city function. They could decide that the carry-over funds should be used to offset property tax increases or fund other high priority non-personnel expenses. Even you will agree that funds appropriated for wage increases don't usually buy any additional productivity, nor is there likely to be any other observable benefit to the city, except possibly improved employee morale.

However, as I told you at the last session, I am interested in suggestions the union has to improve productivity or cut costs in the department, whether they involve reducing overtime, communications or any other department functions. I'm sure I could convince the city administration to provide incentives for workable suggestions which will save money for the department. I'm willing to pursue this if you and the union are interested.

As I indicated in my first letter, if the union will agree to forego additional salary and improved benefits this year, the city is prepared to accept most of your non-economic proposals. Specifically, we will accept the following:

1. New language on non-discrimination (Article IV).
2. Continuation of benefits on retirement at employee's cost (subject to carrier approval).

3. New language on uniform inspections.
4. Deletion of language in Article X, Section 1, Sick Leave, dealing with loss of pay for misuse and "check-up" by the Chief.
5. One year agreement (Article XIX).
6. 14 days notice of shift change (new Article).

We will also accept the following, with certain changes:

1. Blue Cross Plan IV option, if the employee pays the difference between Plan III and Plan IV (currently \$15 - \$20 per month, depending on number of dependents). It will also be necessary to specify the amount of the city-paid premium in this article, in order to determine the employee's cost.
2. Modification of first sentence of paragraph B in Article X, Section 1, to change "one shift" to "three shifts."
3. New article on working out of class, if "top rate" is changed to "next highest rate."
4. Incentive for non-use of sick leave if "five shifts" is changed to "four."

This is substantial improvement in our original offer and represents our best efforts to meet your needs. In order to help me justify these concessions, I request your approval of items 2 and 4 listed in my memorandum of January 21. Of course, we do not agree to any of your proposals not mentioned here.

Finally, I don't think it is fair to characterize the city's offer on wages and fringes as "0." I've calculated the cost for step increases and increased insurance premiums and other "roll-ups" at about \$20,000 for next year. Our proposal includes these items. It's reasonable, therefore, to say that the city's offer is close to 3% at this point.

I'm looking forward to discussing this offer at our meeting on Friday. If any of these proposals prove unacceptable, I'll need the flexibility to alter the entire package, if necessary. Let me know if you have any questions before the meeting.

Very truly yours,


Greg Eades
City Attorney

Steven Hall, Public Works Director
Mayor, Joy Burgess
Council Members

2/16/82
RECEIVED

FEB 16 1982

S.M. Hall

CITY OF MILWAUKIE
DEPT. OF PUBLIC WORKS

In regards to the increase in water & sewer charges, I am sorry to hear it. after reading the Key Communicator letter and trying to get over the shock of another increase, I read in the Review that there is also another increase for water & sewer in the upcoming budget. Doesn't anyone in City Hall ever wonder how these constant increases affect the citizens?!

Our family is a "one income" family and we only get one raise every three years. At this point we can hardly make ends meet and we are not alone in this situation.

I know there is no chance in your not giving up these increases, so I am asking that the billing system be changed to make it easier on the citizen. I am suggesting that we be able to pay monthly instead of every two months. Please don't throw your arms up & say it can't be done because there are ways it can be done. We are having to change our budget systems on the home fronts in order to pay your increases, so the least you can do is try to help us make it possible.

Marlene Brandt

9903 S.E. 49th

Milwaukie, Or. 97222

659-3859

MILWAUKIE
CITY COUNCIL AGENDA
February 16, 1982
7 p.m.

COUNCIL CHAMBERS

1402nd Meeting

- I. CALL TO ORDER
a) Call to order
b) Invocation
c) Pledge of allegiance
- II. AUDIENCE PARTICIPATION
Scott Taylor - Residential Center
- III. PUBLIC HEARINGS
a) Water and sewer rate increases *Resolution # _____*
b) Systems Development charge + *Resolution # _____*
Ordinance 1514 1514
- IV. LEGISLATION
a) Payment of bills
b) Ordinance 1515 defining offenses and prescribing penalties
c) Charter amendments (See February 2 agenda)
d) Reappointment of City Manager Pro Tem
- V. CONSENT AGENDA
a) Approval of minutes - February 2, 1982 meeting
b) Request to retain planning consultant
c) Liquor license renewal - Vic's Tavern
d) League of Oregon Cities - league dues
- VI. INFORMATION
a) Budget Committee minutes - February 5, 1982
b) Parks and Recreation Commission minutes - January 25, 1982
c) Letter of appreciation from James Edwards,
Willamette Manor
d) Letter of appreciation from Larada Johnson,
Hector Campbell School
e) Letter of appreciation from Delora Hegg, Loaves
and Fishes
f) Downtown revitalization conference
g) Letter from Metro re Johnson Creek Outreach Program
h) Letter from Postal Service re relocation
- VII. OTHER BUSINESS
- VIII. ADJOURNMENT
- XI. EXECUTIVE SESSION - to discuss employment of staff,
labor negotiations and matters regarding litigation
under ORS 192.660 (1) (a), (d) and (h).

MILWAUKIE
CITY COUNCIL MEETING
February 16, 1982

Va①

COUNCIL CHAMBERS

1402nd Meeting

The one thousand four hundred and second meeting of the Council of the City of Milwaukie, Oregon was held at 7 p.m. on February 16, 1982 with the following councilors present:

Mel Paulson
Wallace Bishcoff (arrived at 8 p.m.)
Mayor Joy Burgess

Don Graf

Also present:

Richard Bailey, City Manager Pro Tem
Greg Eades, City Attorney
Steve Hall, Public Works Director

Gordon Erickson
Finance Director
Ron Schanaker, Police
Chief
Laurie Perkin, Sec'y

The invocation was given by Mayor Burgess and the pledge of allegiance was recited.

AUDIENCE PARTICIPATION

Scott Taylor, Clackamas County Residential Center, addressed the Council regarding formation of a citizen board for the center made up of Milwaukie residents. He suggested that the Council members might like to submit names for consideration. There was general discussion about the type of facility, the functions, and the individuals referred to the center.

Alfred Liane, 4809 SE Monroe Street, asked how the 32nd street sidewalks were financed. Steve Hall, Public Works Director, said that they were financed by block grants.

James Backenstos, 3626 SE Harrison, asked that a bulletin be posted at the Milwaukie Center, informing the public that the center is fully funded by the city under the current budget proposal and that the center will not close if the Senior Services Serial Levy fails.

PUBLIC HEARING - SEWER AND WATER RATE INCREASES- Resolution No. 3-1982 and 4-1982

Public Hearing was declared open at 7:20 p.m. Notices published and posted as required. Staff report was given by Public Works Director. In order to maintain the current level of service, an increase in sewer rates of approximately 12% on March 1, 1982 and in water rates of approximately 10% on July 1, 1982 are required. Correspondence received:

Letter from Marlene Brandt, 9903 SE 49th, Milwaukie.

There was general discussion on the costs of sewage treatment and the contract with Clackamas Sanitary Service District # 1. There was discussion on the billing system and whether it would be possible to bill users every month rather than every two months. Steve Hall, Public Works Director, went through alternative solutions to the rate increases and answered questions. Speaking in opposition to the rate increases:

Marlene Brandt, 9903 SE 49th
Arnold Callan, 12012 SE Wood
James Backenstos, 3626 SE Harrison

Va (2)

Mike Richmond, 11467 SE 30th
Alfred Liane, 4809 SE Monroe

Joy Brookhouse, 6662 SE Furnberg, expressed the hope that the Council would not increase rates more than was necessary. Bill Hupp, 2626 SE Washington, said that this issue should be put on the ballot, so that the citizens paying for the increase would have the right to vote.

There was further discussion regarding the city's contract with Clackamas Service District # 1. Public Hearing was declared closed. It was MOVED by Graf, SECONDED by Hall, to adopt Resolutions No. 3-1982 (A RESOLUTION OF THE CITY COUNCIL OF THE CITY OF MILWAUKIE, OREGON ESTABLISHING RATES FOR SEWER USE AND REPEALING RESOLUTION NUMBER 9-1981) and Resolution No. 4-1982 (A RESOLUTION OF THE CITY COUNCIL OF THE CITY OF MILWAUKIE, OREGON SETTING FEES FOR WATER SERVICES PROVIDED BY THE CITY UNDER ORDINANCE NUMBERS 1418 and 1424, REPEALING RESOLUTION 8-1981) The MOTION CARRIED with the following roll call vote: AYES: Bischoff, Hall, Graf. NO : Burgess, Paulson. There was discussion on whether or not Bischoff had heard enough of the presentation to vote. Bischoff offered to abstain. It was MOVED by Hall, SECONDED by Bischoff to rescind the previous motion. The MOTION CARRIED with the following roll call vote: AYES: Burgess, Paulson, Bischoff, Hall. NO: Graf. It was MOVED by Hall, SECONDED by Graf, to table the vote on rate increases until the March 2, 1982 meeting to allow Bischoff time to review the tapes. MOTION CARRIED unanimously. PUBLIC HEARING - SYSTEMS DEVELOPMENT CHARGE - ORDINANCE NO. 1514

Public Hearing was declared open at 8:35 p.m. Notices published and posted as required. Staff report was given by Steve Hall, Public Works Director. The systems development charge will equalize charge for sewer connection throughout the city, provide major additional monies in the water fund, and will help to minimize future rate increases to pay for new construction. No correspondence has been received and no one appeared to speak in favor of, or in opposition to, the proposed systems development charges. There was general discussion concerning the costs and how the funds would be used. Public Hearing was declared closed at 8:50 p.m.

It was MOVED by Paulson, SECONDED by Hall, to read Ordinance No. 1514 the first time. MOTION CARRIED unanimously. The ordinance was read in full by City Manager Pro Tem, Dick Bailey. It was MOVED by Bichoff, SECONDED by Graf, to read the ordinance the second time by title only. MOTION CARRIED unanimously. It was MOVED by Paulson, SECONDED by Bischoff, to adopt Ordinance No. 1514 (AN ORDINANCE OF THE CITY OF MILWAUKIE, OREGON CREATING A SYSTEMS DEVELOPMENT CHARGE FOR THE DEVELOPMENT OF EXTRA CAPACITY SEWAGE AND WATER FACILITIES AND REPEALING SECTION 3 OF ORDINANCE 1322 and RESOLUTION NUMBER 9-1969). MOTION CARRIED with the following roll call vote: AYES: Paulson, Bischoff, Burgess, Graf, Hall. NOES: None. Ordinance No. 1514 passed and was so declared by the Mayor.

Va (3)

PAYMENT OF BILLS

It was MOVED by Hall, SECONDED by Graf, that the bills listed for February 16, 1982 be approved for payment. MOTION CARRIED unanimously.

ORDINANCE 1515 - DEFINING OFFENSES AND PRESCRIBING PENALTIES.

Police Chief has requested an ordinance controlling the issues and types of weapons discharged within the city limits.

Included in the ordinance are restrictions regarding the use of fire hydrants and alarms. It was MOVED by Graf, SECONDED by Hall to read Ordinance No. 1515 the first time by title only.

MOTION CARRIED unanimously. It was MOVED by Graf, SECONDED by Hall, to read the ordinance the second time by title only. MOTION CARRIED unanimously. It was MOVED by Hall, SECONDED by Bischoff, to adopt Ordinance 1515 (AN ORDINANCE OF THE CITY OF MILWAUKIE, OREGON DEFINING OFFENSES AND PRESCRIBING PENALTIES). The MOTION CARRIED with the following roll call vote: AYES: Paulson, Bischoff, Burgess, Hall, Graf. NOES: none. Ordinance 1515 passed the Council and was so declared by the Mayor.

CHARTER AMENDMENTS

There was Council consensus that the charter amendments be on the November ballot and that there be citizen input. Graf suggested that the Council hold a work session to consider the changes proposed by the City Attorney and then turn it over to a citizen's committee. It was decided to hold a work session at 6 p.m. prior to the next City Council Meetings on March 2 and March 16.

REAPPOINTMENT OF CITY MANAGER PRO TEM

It was MOVED by Graf, SECONDED by Paulson, that Dick Bailey be reappointed as City Manager Pro Tem for a maximum of three months or until a new manager was appointed. MOTION CARRIED unanimously.

It was MOVED by Graf, SECONDED by Paulson, that consideration of the water and sewer rate increases be postponed until June.

City Attorney said that the previous motion would have to be rescinded before another motion could be entertained. It

was MOVED by Burgess, SECONDED by Paulson, that the previous motion, tabling the vote on rate increases, be rescinded.

MOTION CARRIED with the following roll call vote: AYES: Paulson, Bischoff, Burgess, Graf. NO: Hall. It was MOVED by Graf, SECONDED by Paulson, that the consideration of water and sewer rate increases be postponed until June. MOTION CARRIED with the following roll call vote: AYES: Paulson, Burgess, Bischoff, Graf. NO: Hall.

CONSENT AGENDA

It was MOVED by Hall, SECONDED by Graf, that the Consent Agenda be accepted. MOTION CARRIED unanimously.

Staff was directed to provide a list of services performed by the League of Oregon Cities at the March 2, 1982 Council meeting.

INFORMATION

The U.S. Postal Service has asked for suggestions regarding a possible location for a new facility. Staff will conduct research on possible locations. Ron Schanaker, Police Chief, is inquiring into the cost of leasing the present post office building.

Va (4)

OTHER BUSINESS

Burgess said that she had many complaints regarding the re-routing of Tri Met from Monroe Street to King Road. Steve Hall explained this was done because of previous complaints from citizens regarding structural damage to homes on Monroe due to the poor condition of the roads. Tri-Met investigated and found the complaints to be justified. Further complaints or inquiries should be directed to Mike Kyte, of Tri Met. There was general discussion on what could be done about the problem. Graf suggested creating an LID to improve the roads.

The meeting was adjourned at 9:55 p.m. to go into executive session to discuss employment of staff, labor negotiations and matters regarding litigation under ORS 192.660 (1) (a), (d) and (h)

The executive session adjourned at 11:20 p.m.

APPROVED BY:

Joy Burgess, Mayor

Laurie Perkin, City Recorder