

# **HILLSBORO POLICE DEPARTMENT**

## **ANNUAL REPORT**



**FISCAL YEAR  
1990 - 1991**

***Herman Woll  
Chief of Police***

# CITY OF HILLSBORO



October 7, 1991

TO THE HONORABLE MAYOR AND COUNCIL:

I am pleased to submit for your review and approval the Annual Report for the Fiscal Year 1990-1991.

Year 1990-91 offered the police department unique and challenging activities. The year began with the entire membership of the department involved in the planning and implementation of the Community Policing project. The Community Policing office is located in the Shute Park Plaza complex. The office is called the Tenth Avenue Station and was opened on October 1, 1990. The office space was donated by the Hayden Island Corporation. Twelve officers and two supervisors were assigned to the Tenth Avenue Station. A clerk assisted in the operations of the office.

The Community Policing project theme is "A Community Partnership Against Crime". An open house was held on October 14, 1990 with several hundred citizens attending.

The School Community Resource Officers returned to Glencoe and Hilhi for their second year of the program. School Community Resource Officers Henry Reimann and Andy Schroder brought the Drug Abuse Resistance Education (D.A.R.E.) program into the elementary schools and graduated 291 elementary students from this drug awareness series.

The Crime Prevention Program has developed a community Neighborhood Watch and Crime Stoppers programs.

The Records Division has implemented a new and innovative computerized police records system. The system is termed LEADS, "Law Enforcement Automated Data System".

The Police Department began a new training program termed LETN, "Law Enforcement Training Network". LETN is a nationally recognized satellite transmitted public safety training program.

Employee actions during the past year include the hiring of Officer Vin Ambrose, Records Clerk, Jeri Trembley and the promotions, to the rank of Lieutenant, Jeff Boutwell and Lila Ashenbrenner. The police department received the resignation of Officer Lisa Kennell.

We again participated in the Maxwell House Rose Festival Air Show. The 1991 Air Show marks the fourth year of the City's participation in this event.

The Patrol and Investigations Divisions are continuing to battle the tide against crime. The Police Department is actively engaged in combatting a new area of enforcement, gangs. Gang activity is approaching our City from the Portland area.


On May 3, 1991, the City Council passed the new Nuisance Ordinance. The Police Department began immediate enforcement action, resulting in the elimination of previous community concerns in the areas of dilapidated buildings, litter and debris and noise complaints.

The Police Department utilized regular and reserve personnel to respond to 53 community events. These functions include the Washington County Fair, Fourth of July - Happy Days, St. Patrick's Day, school dances and athletic competitions and other public activities.

The Command management team responded to issues concerning budgetary problems and solutions brought forth by the passage of Measure 5. This was the second year of the Three Year Serial Levy. These funds, \$389,995, provided funding for 8 patrol officer positions and equipment. These officers are assigned to the Street Crimes Unit, Selective Enforcement, Crime Prevention, and the School Community Resource Program.

April 30, 1991 marked the end of my 34 year career as a Police Officer with the City of Hillsboro. I have been a part of your lives, the members of my department and the community and I wish you all the very best in the coming months and years. I hope I have been able to assist the members of the Police Department and community in achieving the highest level of professional law enforcement.

Sincerely,

  
HERMAN WOLL  
Chief of Police

## **GOALS 1990 AND BEYOND**

The Management Assistant Team (MAT) assisted police management in assessing and implementing the 1990 and beyond goals. The MAT Team aided in the continuing reorganization of the Police Department to meet the future needs of the community, the growing and constantly changing citizen needs and the development of the employees within the department.

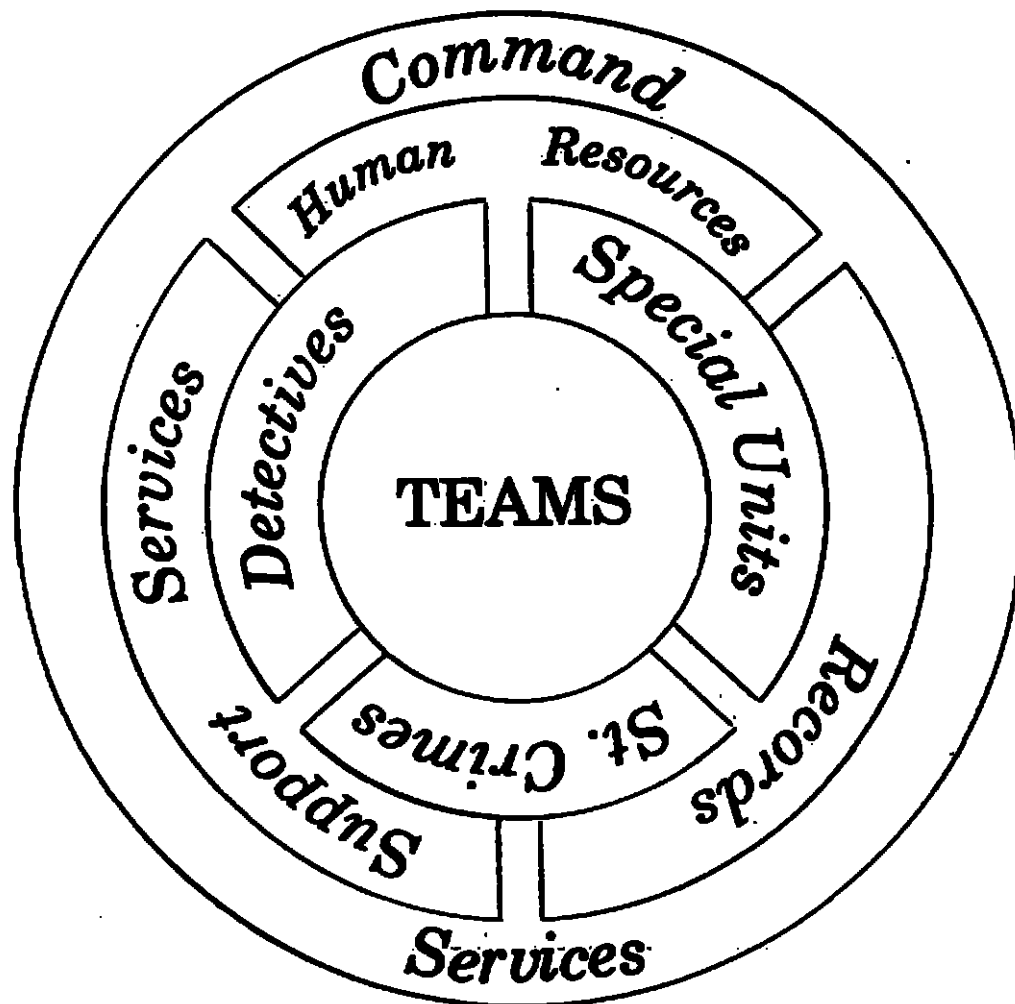
1. Our approach will be generalized with less division of labor and more decentralized command.
2. We will stress individual discretion and trust in individual decision making.
3. Our approach to activities will be proactive, geared toward prevention and deterrence.
4. We will be personally involved with the public and their problems and be active in developing solutions.
5. Our selection and promotion of personnel will be based on testing, achievement and criteria related to job performance.
6. We will actively recruit minorities representative of our population.
7. We will stress persuasion rather than authority to accomplish our tasks.
8. We will encourage the expansion of our employee's role in accomplishing our tasks.
9. We will expect exemplary conduct of our employees based on training, self-control and individual responsibility.
10. Our goal is to promote a happy, productive employee who will be a credit to themselves, our police department, our community and the law enforcement profession.

## **MANAGEMENT PLAN**

The MAT Team proposed a new organizational structure that evolves around patrol and is flexible to community needs. This structure supports the patrol teams who are proactive to the needs of the community. The uniqueness of the structure is its ability to flex and change according to the needs and growth of the community. This is accomplished by change in management philosophy and proactive crime management.

The new organizational structure was implemented on a trial basis with positions filled by assignment. The new structure is operating and providing a foundation to explore implementation of community policing concepts.

This circular diagram represents the new organizational structure. Patrol teams are the core and supported by administrative, investigative and executive functions.



**MANAGEMENT ASSISTANCE TEAM MEMBERS**  
Reporting to Chief Herman Woll

David Lawrence (Facilitator)

Jeff Boutwell (Chairperson)

Lila Ashenbrenner

David Buckmaster

Bruce Parks

Joel Wilson

Greg Baxter

Pat Hess

Henry Reimann

Derald Riggleman

Mike Johnston

Matt Shannon

Special Advisors - Nancy Jones  
Andy Schroder

## **Management Assistance Team Projects**

We continued to address a variety of problems and issues facing the growth of the department and the community. These issues and problems were identified by the 1989/90 MAT Team. We proceeded with the task of analyzing and solving areas of concern. Subcommittees were formed with Management Assistance Team and other Department personnel. These subcommittees continued to meet formally and informally to examine the possible options, make recommendations and present them to the Management Assistance Team. MAT then made recommendations to Administration.

### **Continuing Project Areas:**

Management plan for Department structure, promotions and assignments.

Internal communications.

School Community Resource Officer and Drug Abuse Resistance Education (D.A.R.E.).

Street Crimes Unit

Selective Enforcement Unit

Crime Prevention

Fleet Management

800 Radio System

Computerization of the Records system

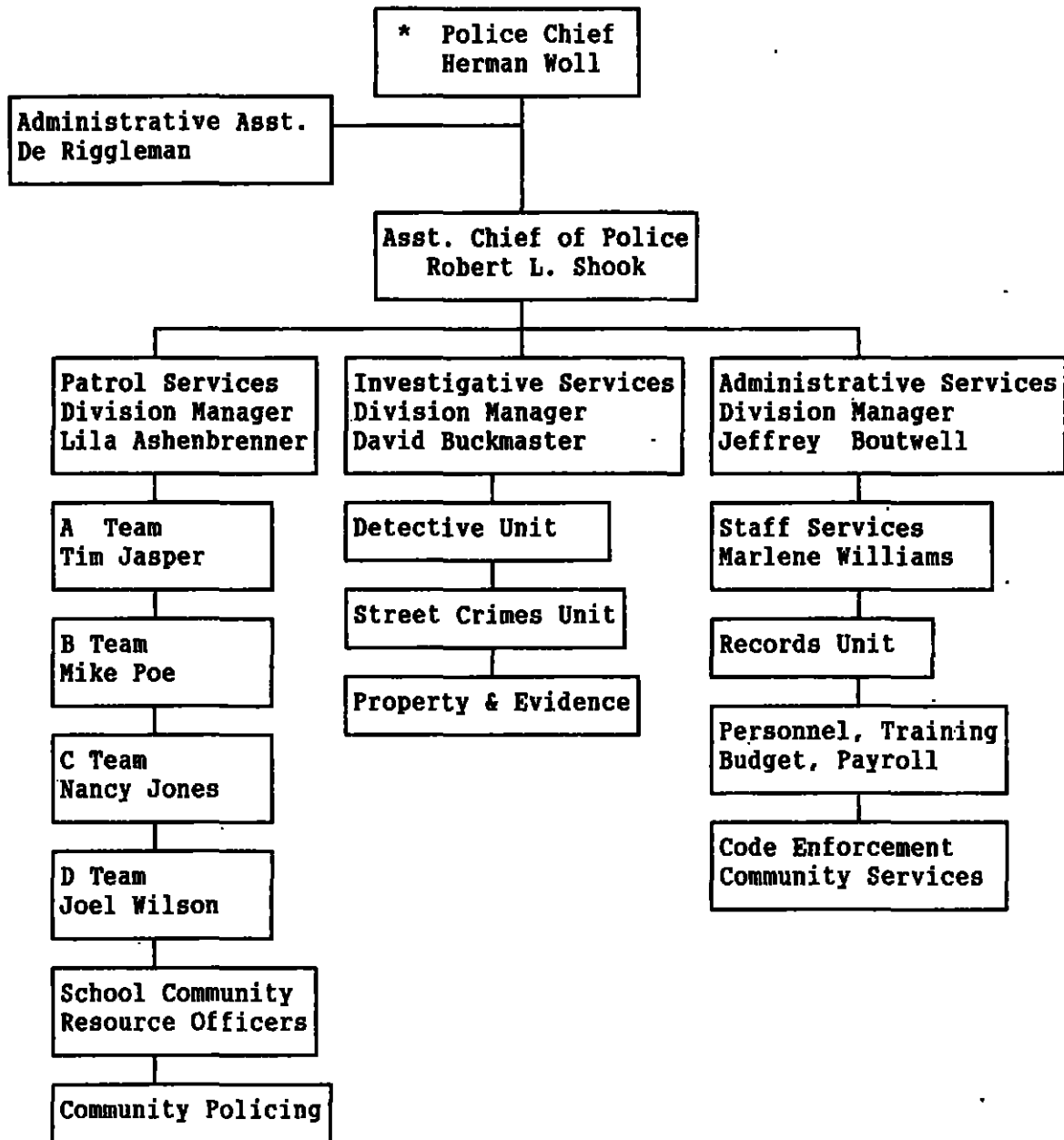
Community Policing projects

Personal development training program

Evaluation of patrol and investigative services

Critique of the MAT team

**Organizational Chart  
Fiscal Year  
1990 - 1991**



\* Chief Woll retired 4-30-91. Robert L. Shook was appointed as the Chief of Police in May 1991.



**HILLSBORO POLICE DEPARTMENT  
BUDGET HISTORY 1980 TO PRESENT**

<u>FISCAL YEAR</u>	<u>APPROVED BUDGET</u>	<u>TOTAL PERSONNEL</u>
1980-81	\$ 1,484,853	* 40 Personnel
1981-82	1,532,456	41 Personnel
1982-83	1,532,456	40 Personnel
1983-84	1,629,250	40 Personnel
1984-85	1,663,506	40 Personnel
1985-86	1,963,913	43 Personnel
1986-87	2,057,166	43 Personnel
1987-88	2,208,874	44 Personnel
1988-89	2,451,656	47 Personnel
1989-90	2,630,240	47 Personnel
1990-91	+ 3,270,898	57 Personnel

\* Contracted Dispatch Services

+ Includes \$389,995 3-year Serial Levy Funds and \$50,036 from the Community Services budget.

**POLICE/POPULATION RATIO HISTORY**

<b><u>YEAR</u></b>	<b><u>POPULATION</u></b>	<b><u>SWORN PERSONNEL</u></b>	<b><u>RATIO PER 1000</u></b>
1981	28,650	36	1.25
1982	28,772	35	1.21
1983	29,675	35	1.19
1984	30,000	35	1.12
1985	29,750	36	1.21
1986	30,270	36	1.19
1987	30,528	36	1.18
1988	31,749	37	1.17
1989	32,320	40	1.23
1990	33,810	41 General Fund	1.21
		* 49 3 YR SL	1.44
1991	37,814	41 General Fund	1.08
		* 49 3 YR SL	1.30

\* Includes eight 3 year serial levy personnel added in November 89 and January 90.

**CITY OF HILLSBORO**

**CRIME LEVELS\***

<b><u>YEAR</u></b>	<b><u>REPORTED PART I AND PART II CRIMES</u></b>
1981	3778
1982	3290
1983	3109
1984	2829
1985	3212
1986	3451
1987	3727
1988	3419
1989	3815
1990	3868
1991	3525

\* These are fiscal year totals which vary from the calendar State Report totals shown on Page 11.

## COMPARATIVE CRIME STATISTICS

The Hillsboro Police Department participates yearly in the State crime reporting system known as the Oregon Uniform Crime Reporting System (OUCR). This system is used as a reporting and comparison tool for the cities and counties of Oregon. The State of Oregon forwards our statistics to the Federal Bureau of Investigation for inclusion in the nation wide annual report "Crime in the U.S." published by the Department of Justice.

Washington County continues to have the second largest population in the State with the total population for 1991 being 313,000.

### WASHINGTON COUNTY CITIES COMPARED

<u>CITY</u>	<u>POPULATION</u>	<u>% OF COUNTY POPULATION</u>	<u>TOTAL CRIME RATE PER 1000</u>	<u>TOTAL INDEX CRIMES</u>	<u>RANK IN COUNTY DESCENDING</u>
Beaverton	51,750	16.5	99.7	2,501	6
Forest Grove	13,300	4.2	104.7	528	5
HILLSBORO	37,350	11.9	96.3	1,454	7
Tigard	29,100	9.3	129.9	3,779	3
Tualatin	15,160	4.8	88.6	729	8

### SIMILAR SIZE OREGON CITIES COMPARED

<u>CITY</u>	<u>POPULATION</u>	<u>TOTAL OFFENSES</u>	<u>% OF CHANGE</u>	<u>NUMBER OF POLICE OFFICERS</u>
Albany	29,375	9,833	+29.8	40
Beaverton	51,750	5,158	- 2.9	60
Corvallis	44,525	5,704	-14.5	43
Gresham	68,000	7,037	- 5.7	75
HILLSBORO	37,350	3,598	- 8.4	50
Lake Oswego	30,800	1,948	- 3.7	38
Medford	46,850	5,623	-69.2	69
Springfield	44,550	6,321	4.1	52

**SERVICES PROVIDED IN THE CITY OF HILLSBORO  
BY  
THE WASHINGTON COUNTY SMALL ANIMAL SHELTER**

<u>SERVICE PROVIDED</u>	<u>88/89</u>	<u>89/90</u>	<u>90/91</u>
Vicious/Dangerous Dogs	37	70	71
Bite Investigations	39	46	58
Injured Dogs	26	18	17
Loose Animal Complaints	320	435	420
Loose Animal Patrol	412	459	514
Impounded Animals	98	123	144
Confined Strays	180	197	244
Owner Requested Euthanasia	12	21	23
Barking Dogs	53	84	84
Cruelty Investigations	49	77	77
DOA Dogs	20	38	34
Citations/Licenses Written	362	496	432
Other Calls	584	940	1028

# ***PATROL DIVISION***

## PATROL DIVISION

Division Manager  
Lila Ashenbrenner

### PATROL PERSONNEL

<u>A TEAM</u>		<u>C TEAM</u>	
Tim Jasper	Team Leader	Nancy Jones	Team Leader
Dave Gulosh	Asst. Team Leader	John Marshall	Asst. Team Leader
<u>Officer</u>		<u>Officer</u>	
Mitch Rademacher		Dick McKereghan	
Jeff Rose		Allen Zaugg (K-9)	
Jim Kelly		Bob Erickson	
Jeff Martin		Roger Bush	
Lisa Kennell (Sabbatical/Resigned)		Kerry Aleshire - TAS	
Ray Gruby - TAS		Steve Vuylsteke - TAS	
Matt Shannon - TAS			
<u>B TEAM</u>		<u>D TEAM</u>	
Mark Bonnett(K-9)	Team Leader	Joel Wilson	Team Leader
Roger Kadell	Asst. Team Leader	Greg Baxter	Asst. Team Leader
<u>Officer</u>		<u>Officer</u>	
Mike Johnston		Jaime Castro - TAS	
Ed Vance - TAS		Randy Lapp (K-9)	
Bob Crain		Terry Jordan	
John Schmerber - TAS		Gary Greenlee - TAS	
Dale Sabine		Bruce Kelley	
Vin Ambrose		Rob Ward	

Patrol units are responsible to provide law enforcement services twenty-four hours a day, seven days a week to the resident of the City.

We received 15,504 calls for service from our residents during this fiscal year, an average of 1,292 calls per month.

TAS - Officers with TAS behind their names are assigned to the Community Policing Project area and work out of the Tenth Avenue Station (TAS).

**COMMUNITY POLICING PROJECT**  
**TENTH AVENUE STATION**

**"A COMMUNITY PARTNERSHIP AGAINST CRIME"**

The Community Policing Project was the result of ideas presented in the Management Assistance Team during the first part of 1990. The ideas came to fruition and were implemented in October of 1990. Community policing is a method of providing police service in which the police and the community work together to solve community problems. This concept gave rise to the slogan: "A Community Partnership Against Crime".

Crime is directly related to social conditions in the neighborhoods: poverty, illiteracy, drugs, unemployment, population density and social differences. These conditions are the basis for the need of a good partnership between the police and the community in order to "fix" what is broken in the community. The "Broken Window Theory" of James Q. Wilson holds that if you have a building with one broken window left unrepaired, then soon all the windows will be broken. The unrepaired window is a signal that no one cares.

The "broken windows" of the neighborhoods - deteriorating property, abandoned vehicles, litter, graffiti and other problems - send a message of uncaring and before long things begin to get out of control. Citizens sense that crime is up, they become fearful. They start avoiding one another and stop interacting socially. They keep to themselves and don't get involved in taking care of minor problems in the neighborhood. Before long, disorder increases and the area is now susceptible to more serious crime. Community Policing seeks to repair these "broken windows" by applying whatever community resources are appropriate: law enforcement, neighborhood groups, public and private social service agencies, etc.

Under Community Policing, successful policing is measured by the decrease of disorder, crime and fear of crime as well as improved neighborhood livability and citizen satisfaction.

The Police Officers assigned to the project area made a concerted effort to get the community involved by holding community meetings, walking or bicycling through the neighborhoods to learn citizen concerns and then working with residents to alleviate their concerns.



Some of the activities of the community policing officers included:

Working on neighborhood livability projects which consisted of cleaning up vacant lots of all litter and debris. Cleaning up vacant houses, correcting parking problems, removing litter off the streets and eliminating graffiti. This was accomplished using a work force of police officers, citizens, and Community Corrections Clients.

Increased foot patrols to cover potential problem areas.

Conducting crime prevention seminars and neighborhood watch programs, home security surveys and attending community meetings with several senior citizen groups to address their safety and well being concerns.

Working in conjunction with the Planning Department, the police officers conducted a survey of the residences in a specific area to gather statistical data to support an application for a federal grant to improve streets, lighting, etc.

Initiation of local landlord training using Portland Police Bureau's Landlord Training Program.

Attending Conversational Spanish Language classes sponsored by McDonalds for four officers from the project area.

Sending two officers through the Portland Police Bureau Bicycle Officer class which qualifies them to train our own officers.

Making efforts to identify the members of a new youth gang in the area and giving them special attention in order to head off potential gang related problems.

## **SPECIAL PROJECT ASSIGNMENTS**

### **COMMUNITY POLICING OFFICERS**

**\*Project Coordinator - Joel Wilson**

Ray Gruby	Kerry Aleshire	Ed Vance	Gary Greenlee
Matt Shannon	Steve Vuylsteke	John Schmerber	Jaime Castro
Ron Baer*			

**\*Acting Sergeant Joel Wilson was reassigned to D Team and Officer Baer was assigned to the Selective Enforcement position on January 1, 1991. Officer Shannon replaced Officer Baer.**

### **SCHOOL COMMUNITY RESOURCE OFFICERS**

**Andy Schroder  
Henry Reimann**

**The School Community Resource Officers continued in the program developed during FY 89/90 in cooperation with the Hillsboro High School District.**

**The program was funded jointly by the School District and the City of Hillsboro. Officers Schroder and Reimann were assigned as follows:**

<b>Henry Reimann -</b>	<b>Glencoe High School Poynter Jr. High Evergreen Jr. High</b>
<b>Andy Schroder -</b>	<b>Hillsboro High School J. B. Thomas Jr. High Brown Jr. High</b>

**The School Community Resource Officers dress in regulation police uniforms and drive marked patrol units. Their activities included problem solving, class room presentations on a variety of subjects including Youth and the Law, drug awareness, proper conduct and behavior and social issues. Other activities included campus security, enforcement of laws and Hillsboro City ordinances, traffic and student control. They also spent class time in Hillsboro elementary schools teaching Drug Abuse Resistance Education (D.A.R.E.).**

## COMMUNITY POLICING PRODUCT COORDINATOR

Pat Hess

Officer Pat Hess was assigned as the Community Policing Product Coordinator and the Community Education Officer.

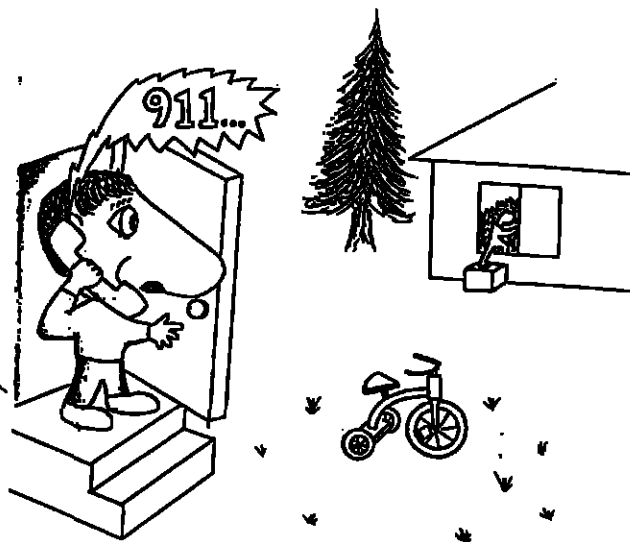
Hess publishes a neighborhood newsletter called the Nosey Neighbor. The newsletter is hand delivered each month to approximately 800 residences in the City. It contains crime prevention tips, updates citizens as to what is happening in the Police Department and provides them with neighborhood information. He organizes and holds monthly meetings with neighborhood leaders. He listens to neighborhood concerns and coordinates solutions with the citizens and officers assigned to the Community Policing Project. Officer Hess coordinates and maintains Crime Prevention programs.

## SELECTIVE ENFORCEMENT/COMMUNITY SERVICES

Ron Baer

Officer Ron Baer attended the Board on Police Standards and Training Motorcycle Officer school and was assigned to do selective enforcement in problem areas and when specific complaints were received. Selective enforcement involved conducting traffic surveys, identifying unsafe intersections, writing proposals for speed reductions, traffic signals and changes in traffic patterns. He responded to citizen concerns about speeding vehicles and initiated an enforcement program to reduce the violations.

A portion of Officer Baer's enforcement program included investigating code enforcement complaints and removal of abandoned vehicles from the streets.



---

## Nosey Neighbor

---

### HILLSBORO POLICE

MONTHLY NEWSLETTER  
OCTOBER, 1991

---

October is "National Crime Prevention Month." All across the country citizens are celebrating the efforts they have taken to improve the livability factor in their communities.

Locally, I feel we have made great progress in our fight against crime. We now have about 20 neighborhoods, large and small, in the city of Hillsboro organized under the Neighborhood Watch program, with an average of three neighborhoods joining monthly. Our "New and Improved" Block Home Program was unveiled this school year. Although still in the start up phase, I expect this program to be as successful as our Neighborhood Watch Program.

Preliminary statistics indicate our overall crime rate to be lower than in past years. I think we can attribute this to our dedication to our neighborhoods. We need to keep up the good work!

---

The closing of the Tenth Avenue Station has moved the offices for the Community Education Unit (CEU) and the Community Action Team (CAT) to the Hillsboro Police Main Station. Our phone numbers have changed also. You can reach Sgt. Joel Wilson and the CAT at 681-6182. Officer Pat Hess can be reached at 681-6140. We are still here to help you!!

As our children will certainly remind us, Halloween is fast approaching. Although many



of us have fears about the potential dangers of this holiday, there are many things we can do to make it safe for our children.

- Children's costumes should fit in a manner so they do not hamper movement or cause them to trip.
- If a mask is worn, make sure there are large eye holes. Face paint is a good alternative to masks.
- Use a flashlight when walking at night.
- Costumes should be light colored and fire retardant. Reflective tape on costumes and trick-or-treat bags helps motorists see your child in the dark.
- Whenever possible, parents would accompany children on their rounds. If you don't accompany your children, make sure you know where they will be going.
- Children should be reminded to stay on the sidewalks and cross the street only at crosswalks.
- Parents should inspect all goodies before they are eaten.

These are but some suggestions for a safe Halloween.

The Downtown Merchants are again providing goodies. Details are given in the Argus, or you can contact the Chamber of Commerce. Other alternatives to the traditional door-to-door trick-or-treating are costume parades, Halloween parties and haunted houses. These can be done in your neighborhood, or in conjunction with a church or school.

When driving on Halloween night, use extra caution and watch for trick-or-treaters.

We normally see an increase in minor vandalism around Halloween. Keep an extra eye out for abnormal activities and report any suspicious activity to the Police.

Take a walk or drive through your neighborhood between the hours of 9:00 and midnight being watchful for abnormal activity.

---

#### ⑥ PREVENTION TIP ⑥

Recently there has been an increase in stolen cars in the west-metro area. Remember to not leave your keys in the ignition or leave a spare key in the car. Lock your doors. Park in a safe location: near a light at night, in a parking lot, park near the main flow of traffic. Losses due to car theft are estimated to be \$5.5 billion each year. Don't be a statistic!

---

The Hillsboro Police Patrol Division is currently in the process of re-evaluating our "call prioritization" criteria. Call prioritization is done to ensure that the most serious calls for service are answered first. Crimes against persons, such as rape, and serious assaults are high on the priority list and are responded to on an immediate basis. Calls lower on the priority list like minor thefts without suspect information are lower on

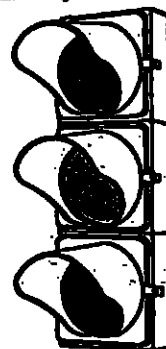
the priority list and are answered as time allows.

A tremendous amount of research is being done on this project, the end result of which will be a more effective means of delivering police service to you. We will report further details to you as our project progresses.

---

#### ◆ TRAFFIC TIP ◆

Green light go, red light stop, right? What about yellow? Oregon statute says that a driver facing a steady yellow light is warned that the light will be changing to red, and you will lose your right of way to the intersection. You must stop before reaching the intersection unless you cannot stop safely.



Area Traffic Court Judges have interpreted this rule to mean that if you enter, or are in, the intersection when the traffic light is red, you are in violation. Speeding up to "beat the red" usually only attracts the attention of a Policeman who will watch the light a little closer. The "stopping safely" clause does not cover you when you are going too fast to stop.

Surprisingly, a great percentage of accidents in the city are at intersections controlled by a traffic light. This means that someone did not obey the signal. If the light is yellow, stop. This may save you from being involved in an accident, or receiving a traffic citation.

---

#### COORDINATOR'S MEETING

Monday, October 21, 1991 7:00pm  
205 SE Second Street

All are invited to attend!

**PATROL STATISTICS**  
**TRAFFIC ENFORCEMENT**

<u>CITATIONS</u>	<u>87/88</u>	<u>88/89</u>	<u>89/90</u>	<u>90/91</u>
Violation of the Basic Rule	2434	2090	1799	1513
Traffic Control Device	702	694	567	435
Miscellaneous Citations	4727	5546	4366	4354
Driving Under the Influence	240	224	283	391
 Total Citations Issued	 8103	 8554	 7015	 6693
Total Warnings Issued	<u>8543</u>	<u>7951</u>	<u>6962</u>	<u>7403</u>
Total Traffic Activities	16646	16505	13977	14,096

**OTHER ACTIVITIES**

Calls for Service	12927	14270	15627	15504
Reports Written	12598	13093	11815	9980
Deliveries	1001	1006	808	725
Warrants Served	602	726	687	566
Motorists Assists	1084	1286	1249	1244
Field Interview Reports	822	1089	937	465
Accidents Investigated	401	426	433	450
Assigned Cover Calls	6552	6605	6172	6194

### RESERVE UNIT

Unit Liaison

Lt. Jeff Boutwell

Reserve Coordinators

Res. Officer Mark Fresh

Res. Officer Scott Griffith

During the fiscal year, the Hillsboro Police Reserves donated 6,277 hours of service to the Department and the citizens of Hillsboro.

They actively participated in at least 56 different community events throughout the fiscal year. Their volunteer hours consists of training, traffic and crowd control and security at public events.

### ACTIVE RESERVES

Ed Ackerman

Mark Fresh

Scott Griffith\*

Tim Krieck

Dan Walsh

Mark Bongiorno

Linda Mascarro

Mark Stanley

Steve Berry

Bruce Cuyler\*

Mike McCloud

Shaleen Wernli

Larry Duggan

Troy Landers

Don Moore

David Swendseid

Jean Cuyler\*

Tom Kind

Rodney Wilkerson

Kathy Matson

David Shook

Dave Meyers\*

Robert Shook

### INACTIVE RESERVES

Pat Krautschied

Chuck Lawton

Tammie Sabine Terry Petsche

Harold Kosko

### CHIEF'S SPECIAL RESERVES

Ron Bottema

George Papadopoli

\* Again, during this fiscal year, we "lost" four of our reserves to other law enforcement positions. Scott Griffith and Dave Meyers were hired as regular police officers at Forest Grove and Portland Police Bureau, respectively. Bruce and Jean Cuyler joined the Multnomah County Sheriff's Posse.

# ***INVESTIGATIVE SERVICES UNIT***



## INVESTIGATIONS DIVISION

Division Manager  
David Buckmaster

### INVESTIGATIONS PERSONNEL

#### Detective Personnel

Leo Gossman  
Tom Robinson  
Larry Harris  
Derald Riggleman

#### Street Crimes Unit

Bruce Parks (K-9)  
Charles Johnson

#### Special Assignments

Sgt. Mike Poe - PAINT\*  
Sam Urias - INET/ROCN\*\*

- \* Portland Airport Interagency Narcotics Team.
- \*\* Interagency Narcotics Enforcement Team/Regional Organized Crime & Narcotics Task Force.

**O U C R    ACTIVITIES**

<b><u>CRIME</u></b>	<b><u>87/88</u></b>	<b><u>88/89</u></b>	<b><u>89/90</u></b>	<b><u>90/91</u></b>
Homicide	-0-	-0-	-0-	2
Robbery	22	35	34	22
Burglary	419	427	302	269

**Total Part I Crimes**

Homicide, Rape, Robbery, Burglary, Theft I, Motor Vehicle Theft, Arson.

<b><u>87/88</u></b>	<b><u>88/89</u></b>	<b><u>89/90</u></b>	<b><u>90/91</u></b>
1573	1732	1631	1450

**Total Part II Crimes**

Sexual Abuse, Minor Theft, Minor Assaults, Harassment, Forgery, etc.

<b><u>87/88</u></b>	<b><u>88/89</u></b>	<b><u>89/90</u></b>	<b><u>90/91</u></b>
1843	2089	2237	2084

## INVESTIGATIVE SERVICES STATISTICS

	<u>88/89</u>	<u>89/90</u>	<u>90/91</u>
Cases Assigned	166	150	211
Cases Cleared	181	85	190
Persons Arrested	173	179	207
Property Recovered	\$321,704	\$202,418	\$218,567

### Other Detective Activities

Persons Interviewed	1234	975	976
Telephone Contacts	4002	5134	4942
Reports Written	1808	1625	1303

## ***ADMINISTRATIVE SERVICES UNIT***

## **ADMINISTRATIVE SERVICES**

This Unit is responsible for providing clerical and administrative services for the Police Department.

Administrative Specialist	De Riggelman
Police Staff Assistant	Marlene Williams
Records Clerks	Pat Allan Rita Papadopoli Cindy Brackett Jeri Trembly

Reports Processed	11,283
-------------------	--------

**CODE ENFORCEMENT UNIT**

**Investigator**

Officer Ron Baer

<b><u>ACTIVITIES</u></b>	<b><u>88/89</u></b>	<b><u>89/90</u></b>	<b><u>90/91</u></b>
Discarded Vehicles on Private Property	73	99	47
Animal Complaints	16	15	19
Business Licenses/Complaints	56	48	27
Litter/Debris Complaints	132	120	110
Liquor License Applications	81	74	89
Public Presentations Scheduled	33	55	53
Security Licensing	128	124	111
Miscellaneous	<u>544</u>	<u>172</u>	<u>168</u>
<b>* TOTAL CASES</b>	<b>1226</b>	<b>707</b>	<b>624</b>

\* These totals include only the activities that required some type of field investigation and/or investigation related to licensing. It does not include the totals of other administrative functions.

## **PARKING ENFORCEMENT UNIT**

### **Parking Enforcement Officers**

Reserve Mark Fresh - Part time

Reserve David Shook - Part time

This Unit is responsible for enforcing parking regulations in the downtown core area, off-street regulated parking areas, posted areas near Shute Park and the City Library, Tuality Hospital and other marked areas in the City during regular business hours. The officers also responded to citizens regarding parking problems or complaints in their neighborhoods.

<b><u>STATISTICS</u></b>	<b><u>88/89</u></b>	<b><u>89/90</u></b>	<b><u>90/91</u></b>
Warnings	89	128	340
Citations	1712	2158	4685