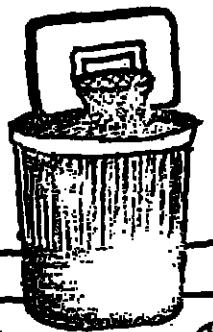
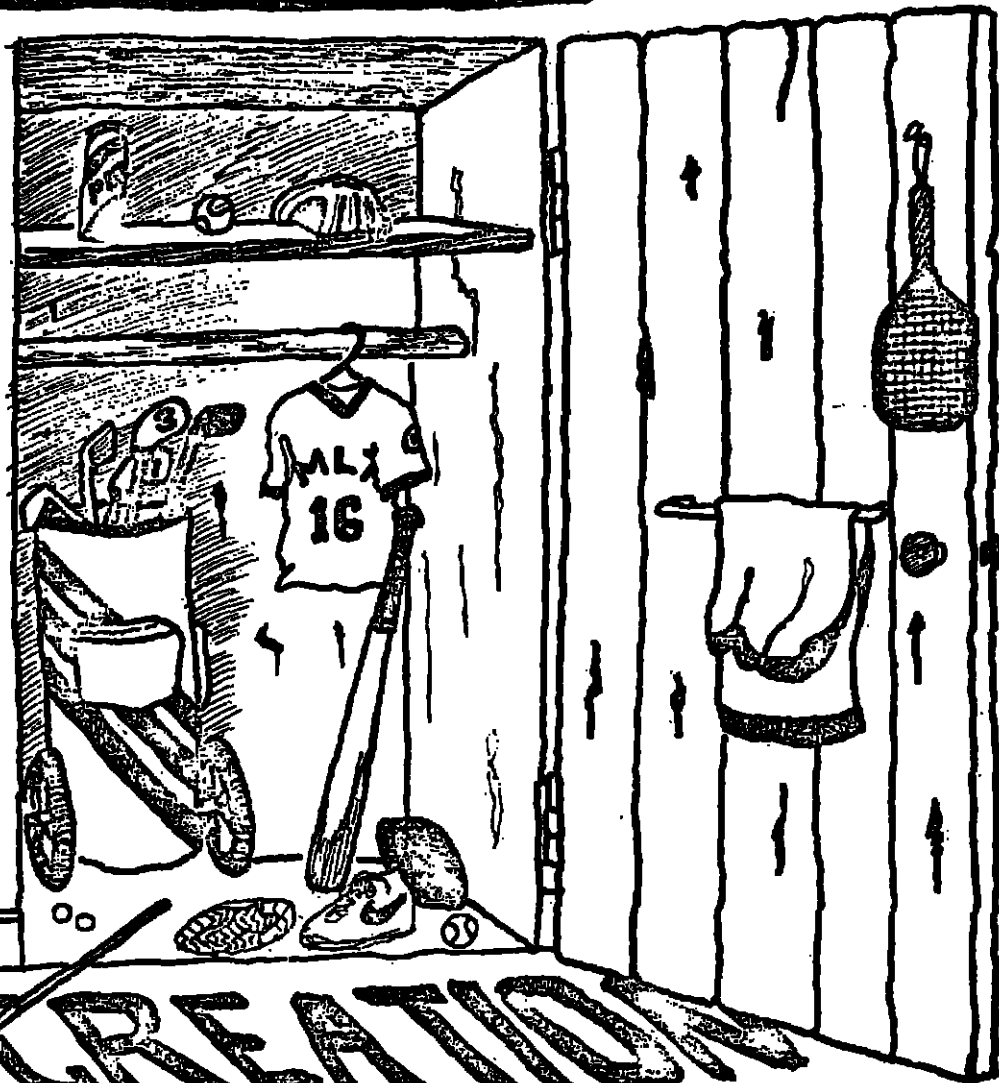
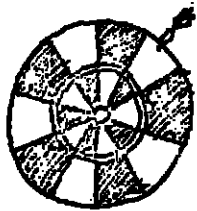


**MOUNTLAKE
TERRACE**

1978



**RECREATION
AND PARKS DEPT.
ANNUAL REPORT**

ACKNOWLEDGEMENT

TO THE PUBLIC AND CITIZENRY THAT UTILIZE, PATRONIZE, AND SUPPORT OUR CITY'S FACILITIES AND PROGRAMS;

TO THE DEDICATED ELECTED AND APPOINTED CITY OFFICIALS THAT DEVOTE THEIR TIME, ENERGY AND INTEREST TO HELP KEEP OUR RECREATION AND PARK DEPARTMENT ONE OF THE BEST IN THE NATION;

TO THE LOCAL BUSINESSES THAT SPONSOR YOUTH AND ADULT RECREATION PROGRAMS;

TO THE MANY PRIVATE AND PUBLIC AGENCIES PROVIDING COOPERATION AND ASSISTANCE TO OUR RECREATION AND PARK DEPARTMENT;

TO ALL RECREATION AND PARK DEPARTMENT PERSONNEL CONTRIBUTING TO THE EXCELLENT LEISURE SERVICE SYSTEM PROVIDED BY THIS CITY;

THANK YOU FOR MAKING THIS REPORT POSSIBLE, AND THE CITY OF MOUNTLAKE TERRACE A BETTER PLACE IN WHICH TO LIVE, WORK AND PLAY.

**MICHAEL D. CORSO
DIRECTOR OF RECREATION AND PARKS**

TABLE OF CONTENTS

PAGE 1	-	CITY OFFICIAL AND STAFF ROSTER
PAGE 2	-	ORGANIZATIONAL CHART
PAGE 3	-	RECREATION AND PARK FACILITY INVENTORY
PAGE 4	-	FINANCIAL ANALYSIS
PAGE 5	-	ATTENDANCE SUMMARY
PAGE 6	-	HIGHLIGHTS AND ACHIEVEMENTS FOR THE YEAR

CITY OFFICIAL & STAFF ROSTER

FOR 1978

CITY COUNCIL

John Enbom, Mayor
Vic Sood
Lois Anderson
Harry Sherman
Dale Straight
Roger J. Bergh
Bette Kaploski

RECREATION AND PARK COMMISSION

Clark Hogle, Chairman
Patricia Unger
Herb Day
Sue Lubash
Dale Morgan
Fred Matteucci
Barbara Swanson

RECREATION FAIR COMMISSION

Al Unger, Chairman
Bill Hanks
Don Wade
Terry McCann
Sonya Beardsley
Louise Lippman
Bob Whipple

FINE ARTS COMMISSION

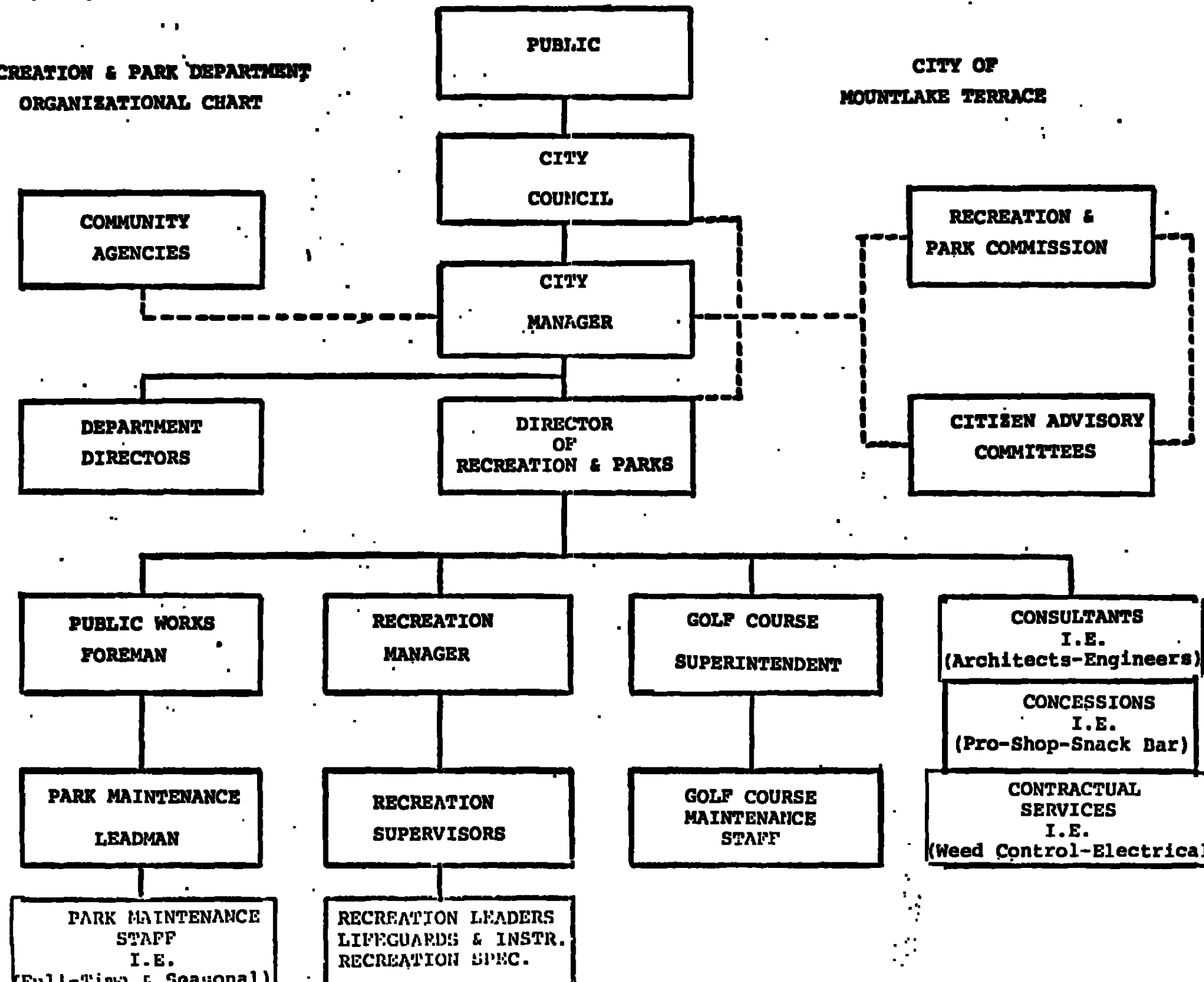
Marge White, Chairperson
Nancy Rummel
Kathy Funk
Joyce Kelly
Laura McDaniel
Hal Willits
Grace Anderson

ADMINISTRATIVE STAFF

City Manager	-	Robert G. White
Recreation & Park Director	-	Mickey Conso
Recreation Manager	-	Jo N. Miles
Aquatics Supervisor	-	Roberta Galloway
Athletic Supervisor	-	Don Sarcletti
Clerical Supervisor	-	Marilyn Stahle
Assistant Aquatics Supervisor	-	Janie Sapien
Public Works Foreman	-	Jim Portch
Park Maintenance Leadman	-	Gerald Darby
Golf Course Superintendent	-	John Eby
Golf Course Concessionaire	-	Gary Barrett

**RECREATION & PARK DEPARTMENT
ORGANIZATIONAL CHART**

**CITY OF
MOUNTLAKE TERRACE**



Dear Citizen:

The Mountlake Terrace Recreation and Park Department would like for you to know and enjoy your local Recreation and Park facilities.

Mickey Corso, Director
Phone 776-1161, Ext. 236

RECREATION AND PARK FACILITIES INVENTORY - 1979

NAME	ADDRESS	PHONE #	SIZE	DESCRIPTION
1. Ballinger Park Boat/Fishing Access	23500 Lakeview Drive	775-6467	2 Acres	RR, BBQ, PA
2. Ballinger Park Clubhouse	23000 Lakeview Drive	775-6467	5,000 Sq. Ft.	RR, AR, SB, Pro Shop.
3. Ballinger Park Golf Course	23000 Lakeview Drive	775-6467	40 Acres	9 Holes, 2900 Yds, Course Rating-65
4. Ballinger Playfield	23000 Lakeview Drive	776-9173	7 Acres	Scheduled for Completion - 1980
5. Cedar Way Bicentennial Park	222nd St. S.W. & 40th Ave. W.	None	5 Acres	NA, PE, CS, PA
6. Civic Center	23204 58th Avenue W.	776-1161	2 Acres	RR, AR
7. Evergreen Playfield	56th Ave. W. & 224th St. S.W.	775-6477	10 Acres	RR, PE, PF, BBQ, TR, PA, TC, SB
8. Forest Crest Playfield	50th Ave. W. & 236th St. S.W.	776-9173	5 Acres	PF
9. Jack Long Park	58th Ave. W. & 222nd St. S.W.	None	3 Acres	NA, PE, PA
10. Lake Ballinger	23500 Lakeview Drive	None	100 Acres	Fishing, Boating (No Water Skiing)
11. Lake Ballinger Island	Middle of Lake	None	3 Acres	NA
12. Larry Egbert Park	228th St. S.W. & 39th Ave. W.	776-1161, Ext. 252	1 Acre	PE, PA, BBQ
13. Library	52nd Ave. W. & 236th St. S.W.	776-8722	31,000 Books	RR, AR
14. Racquetball Courts	5303 - 228th St. S.W.	776-9173	3 Indoor Cts.	Racquetball or Handball
15. Recreation Pavilion	5303 - 228th St. S.W.	776-9173	25,000 Sq. Ft.	RR, AR, SB, SP
16. Terrace Creek Park	48th Ave. W. & 233rd St. S.W.	None	60 Acres	NA, RR, PE, CS, PF, BBQ, TR, PA
17. Terrace Ridge Park	242nd St. S.W. & 46th Ave. W.	None	6 Acres	PE, PA, BBQ
18. Veteran's Memorial Park	58th Ave. W. & 234th St. S.W.	None	10 Acres	NA, PE, BBQ, TR, PA

DESCRIPTION KEY

AR	Activity (or Meeting) Rooms	PA	Picnic Areas	TC	Tennis Courts
BBQ	Barbeque Pits	PE	Playground Equipment	TR	Trails
CS	Covered Shelters	PF	Playfield	SB	Snack Bar
NA	Natural Areas	RR	Restrooms	SP	Swimming Pool

TOTAL PARK ACREAGE:	114 Acres	Park Land (60 Acres Undeveloped - 54 Acres Developed)
	40 Acres	Golf Course
	100 Acres	Lake Ballinger

FINANCIAL ANALYSIS

BUDGET SUMMARY:

Maintenance & Operation

<u>Revenues:</u>	<u>1976</u>	<u>1977</u>	<u>1978</u>
Golf Course	\$123,705	\$ 82,050	\$ 67,235
Swimming Pool	130,387	143,732	141,959
Racquetball Courts	N/A	N/A	27,854
Recreation Programs	45,980	47,911	52,112
Athletic Leagues, Playfield Fees, Miscellaneous	23,850	39,356	42,879
Special Recreation Program	<u>14,750</u>	<u>17,864</u>	<u>17,310</u>
TOTALS:	\$338,672	\$330,913	\$349,349

Expenditures:

Administration	\$ 27,817	\$ 29,347	\$ 31,759
Recreation Programs	199,666	223,650	263,404
Golf Course	122,442	80,067	71,807
Park Maintenance	80,736	96,798	104,621
Building/Pool Maintenance	91,527	104,057	114,603
Special Recreation Program	<u>14,613</u>	<u>16,495</u>	<u>15,734</u>
TOTALS:	\$536,801	\$550,414	\$601,928

Capital Improvements

Revenues:

Rec/Park Construction Fund	\$492,961	\$ 6,545	\$151,789
Golf Course Construction Fund	N/A	13,717	N/A
Racquetball Construction Fund	<u>N/A</u>	<u>313,969</u>	<u>\$ 5,720</u>
TOTALS:	\$492,961	\$334,231	\$157,509

Expenditures:

Rec/Park Construction Fund	\$516,984	\$ 77,893	\$190,253
Golf Course Construction Fund	129,732	13,717	N/A
Racquetball Construction Fund	<u>N/A</u>	<u>98,336</u>	<u>\$210,401</u>
TOTALS:	\$646,716	\$189,946	\$400,654

ATTENDANCE SUMMARY

<u>Recreation Programs/Facilities</u>	<u>1976</u>	<u>1977</u>	<u>1978</u>
1. Public Swim	97,214	80,503	68,591
2. Swim Instruction	99,544	99,604	110,920
3. School Rentals	5,400	3,000	6,000
4. Public Rentals	1,800	2,140	2,200
5. Rec Classes	36,457	38,191	42,622
6. Athletic Leagues	22,626	28,334	28,000
7. Open Gym	5,613	5,859	5,500
8. Playgrounds	3,258	3,815	3,700
9. Pavilion Drop-in	138,000	144,900	159,390
10. Playfield Participants	18,665	23,190	24,340
11. Special Recreation	2,828	3,412	3,664
12. Child Care	1,218	2,720	2,778
13. Dolphin Swim Team	20,750	22,825	22,200
14. Recreation Fair	-0-	3,228	3,380
15. Tennis Courts	8,000	16,000	16,800
16. Special Events	4,000	4,200	4,450
17. Racquetball Courts	-0-	-0-	19,045
18. Pavilion Room Requests	No Record	2,768	2,895
19. Forest Crest Rentals	No Record	3,037	3,647
TOTAL:	465,373	487,726	530,122

Golf Course

1. 9 Hole Rounds	18,428	18,148	14,842
2. 18 Hole Rounds	4,046	4,127	3,384
3. Annual Pre-paid Rounds	2,342	3,778	3,017
4. Daily Jr/Sr Rounds	3,460	4,765	5,699
5. Family Weekend Special Rounds	1,459	1,549	2,131
6. Special Promotion Rounds	325	180	158
7. Banquet Room Rentals	2,600	4,500	5,000
TOTAL:	32,660	37,047	34,231

HIGHLIGHTS - ACHIEVEMENTS

IN 1978

1. Three (3) indoor Racquetball-Handball Courts were constructed at the Recreation Pavilion, opened in May and by December were up to 95% court usage.
2. Additional major improvements were made to the Recreation Pavilion in conjunction with the Racquetball Court construction: Increased lighting in Locker Rooms and Arts and Crafts Room, major repairs to swimming pool filters and mechanical systems, remodeling and expansion of the receptionists desk in the front lobby, addition of a staff lounge and first-aid room, and other miscellaneous improvements.
3. Fencing was installed around the Golf Course with a positive result of vandalism reduction observed during the year.
4. Extensive drainage repairs were made to the Golf Course - 8 new drain lines were installed around #3 green and #7 fairway.
5. Drainage and field surface rehabilitation was started at the Evergreen Playfield Baseball Field.
6. An extensive extermination program for eliminating nuisance and undesirable bird habitat from the Golf Course was investigated and initiated.
7. The Ballinger Playfield Master Plan was undated after several community and public meetings, in hopes for a 1979 IAC development grant submittal.
8. The Mountlake Terrace Youth Athletic Association hosted the 1978 West Coast Divisional Championship Tournament for Little League and Senior League Softball at Evergreen Playfield July 31 through August 5 - featuring the State Champions from Alaska, Montana, Oregon and Washington.
9. The Ballinger Park Boat and Fishing Access development project was brought to near completion, in preparation for an early 1979 Spring opening.
10. A new Athletic Supervisor was hired, Don Sarcletti, to replace Ward Wyman who resigned.
11. The Evergreen Playfield Snack Bar Concession Agreement with M.T.Y.A.A. was revised to more adequately reflect the needs and operating capabilities of the M.T.Y.A.A.
12. The Recreation and Park Directors from Mountlake Terrace, Edmonds and Lynnwood provided key input to Edmonds School District officials to stimulate the implementation of a Recreation and Athletic facility study for City and School facilities for 1979.