



# CITY OF MILWAUKIE

TRAFFIC REGULATION NO.: **532**

DATED: **12/19/2025**

As provided in the City of Milwaukie Municipal Code Chapter 10.08 Section 020, and having based my determination only upon:

- a. Traffic engineering principles and traffic investigations.
  - b. Standards, limitations and rules promulgated by the State Highway Commission.
  - c. Other recognized traffic control standards.
  - d. Required needs.
- 

## **General Description of Regulation:**

Install three stop signs with stop bars.

## **General Location:**

1. Tax ID: 12E30AC04400. East corner of intersection.
2. Tax ID: 12E30AC03700. North corner of intersection.
3. Tax ID: 12E30BD08900. West corner of intersection.

## **Need for Traffic Regulation:**

There are currently no traffic control devices at the 3-way intersection of SE Rainbow Lane and SE Winsor Drive causing speeding and confusion amongst drivers resulting in frequent lane incursions.

## **Description for New Traffic Control Measure(s):**

- Sign Type: STOP Signs**
- MUTCD Code: R1-1**
- Sign Size: 30 x 30**
- Red FIRE LANE Curb**
- Installed on Square Metal Pole:**
  - Anchor Sleeve:**
  - Round Surface Mount Base:**
  - Other:**
- Pavement Marking: 12-inch white thermoplastic**
- Symbol:**
- Line: Stop bar**

*Jennifer Garbely*

Jennifer Garbely, City Engineer

Daniel Hofmann

TRG Author

12/17/2025

Date

I hereby establish the following traffic regulation, the attached map identifies parking restrictions, which will take effect as soon as appropriate signs or markings are posted in the areas affected.

*ES*




Emma Sagor, City Manager

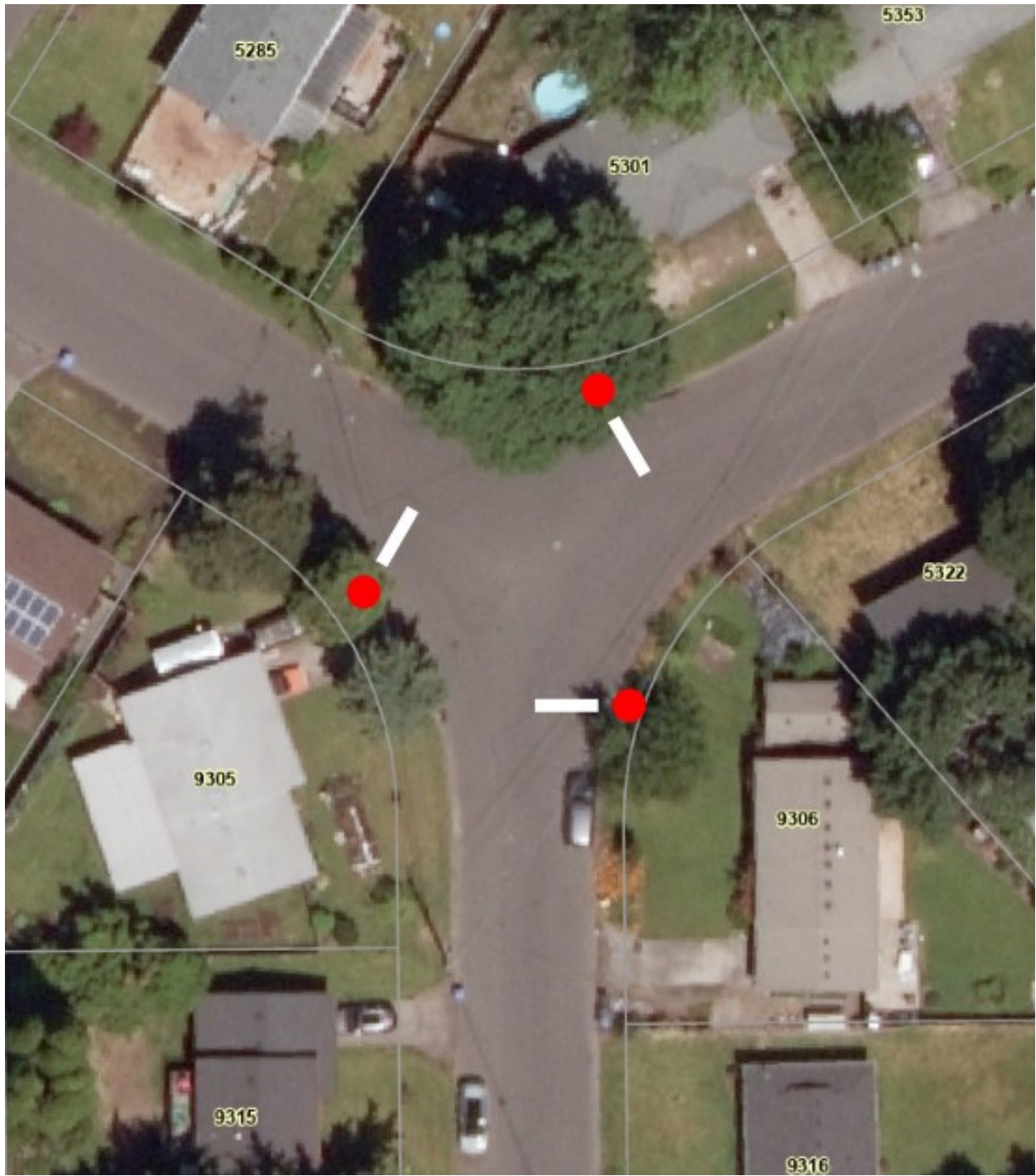
This regulation has been recorded by the Office of the City Recorder (OCR).

- cc:  City of Milwaukie Engineering.       City of Milwaukie Parking Enforcement.
- City of Milwaukie Police.                       City of Milwaukie Operations and Sign Shop.
- Clackamas County Fire Dept.                       City of Milwaukie Court.

Temporary Expiration Date: \_\_\_\_\_

Does this regulation replace or repeal a previous regulation? If so, which TRG #s? \_\_\_\_\_

Reference Table		
Description	Symbol	Image
Adds R1-1 stop sign(s).  30" x 30"		
Adds white 12" thermoplastic stop bar		



Site Plan



East Corner



North Corner



West Corner