



CITY OF MILWAUKIE

TRAFFIC REGULATION NO. 529

DATED: 10/25/2025

As provided in the City of Milwaukie Municipal Code Chapter 10.08 Section 020, and having based my determination only upon:

- a. Traffic engineering principles and traffic investigations.
 - b. Standards, limitations and rules promulgated by the State Highway Commission.
 - c. Other recognized traffic control standards.
 - d. Required needs.
-

General Description of Regulation:

Create a no parking zone on the eastern side of SE Waverly Ct.

General Location:

Eastern side of SE Waverly Ct north of SE Lava Dr up to Waverly Hall and Stuart Hall apartment entrance.

Need for Traffic Regulation:

This portion of SE Waverly Ct has a steep hill and curves significantly reducing sight distance. Vehicles parking on both sides of the street exacerbates the issue. By limiting street parking to only one side of the street, it will alleviate vision obstructions.

Description for New Traffic Control Measure(s):

Add no parking anytime signs to indicate no parking from the start of the block till the entrance to Stuart Hall.

Sign Type: No Parking Anytime signs with directional arrows

MUTCD Code: R7-1

Sign Size: 12" x 18"

Red FIRE LANE Curb

Installed on Square Metal Pole:

Anchor Sleeve:

Round Surface Mount Base:

Other

Pavement Marking:

Symbol:

Line:



Jennifer Garbely, City Engineer

Adi Salinas
TRG Author

10/23/2025
Date

I hereby establish the following traffic regulations, a repeal of past parking-related traffic regulations and establishing the attached map identifying parking restrictions, which will take effect as soon as appropriate signs or markings are posted in the areas affected.



Emma Sagor, City Manager

Date 10/25/2025

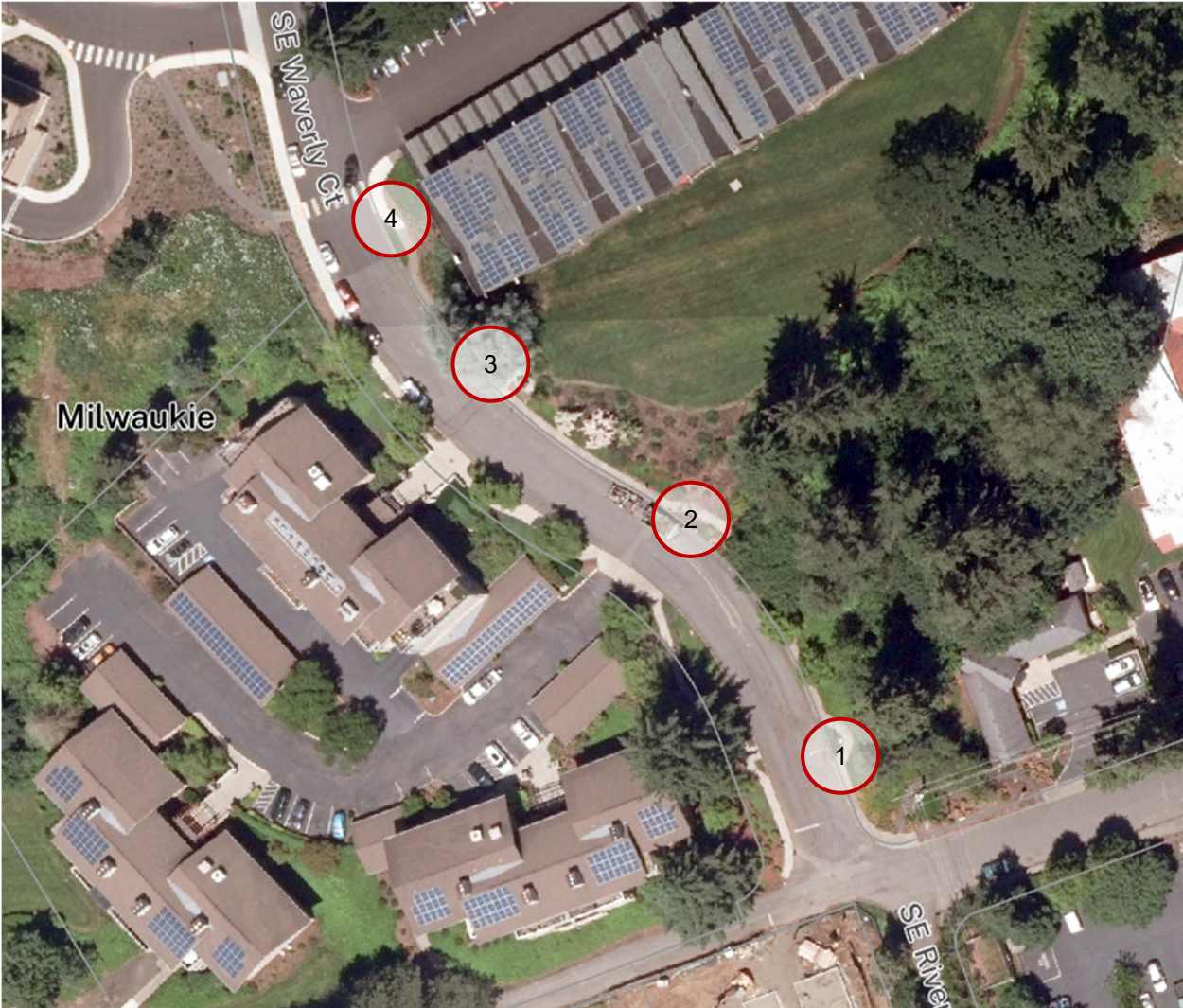
This regulation has been recorded by the Office of the City Recorder (OCR).

- cc: City of Milwaukie Engineering City of Milwaukie Parking Enforcement
 City of Milwaukie Police City of Milwaukie Operations and Transportation
 Clackamas County Fire Dept. City of Milwaukie Court

Temporary Expiration Date: _____

Does this regulation replace or repeal a previous regulation? If so, which TRG #s? _____

Sign Locations:



**1. No Parking Anytime
with left arrow**

**2 & 3. No Parking
Anytime with double
arrows**



**4. No Parking Anytime
with right arrow**

