



Special Session **SPS**

Milwaukie City Council

COUNCIL SPECIAL SESSION & RETREAT

City Hall Community Room, 10501 SE Main Street
 & Zoom Video Conference (www.milwaukieoregon.gov)

AGENDA

JULY 9, 2024

Council will hold this meeting in-person and by video conference. The public may come to City Hall or join the Zoom webinar. For Zoom login visit <https://www.milwaukieoregon.gov/citycouncil/city-council-special-session-35>. This meeting will not be broadcast live or recorded.

Written comments may be delivered to City Hall or emailed to ocr@milwaukieoregon.gov.

Note: agenda item times are estimates and are subject to change.

Page #

1. **CALL TO ORDER** (5:15 p.m.)
 - A. **Pledge of Allegiance**
 - B. **Native Lands Acknowledgment**

2. **ANNOUNCEMENTS** (5:17 p.m.)

3. **PROCLAMATIONS AND AWARDS**
 - A. **None Scheduled.**

4. **SPECIAL REPORTS**
 - A. **None Scheduled.**

5. **COMMUNITY COMMENTS** (5:20 p.m.)

To speak to Council, please submit a comment card to staff. Comments must be limited to city business topics that are not on the agenda. A topic may not be discussed if the topic record has been closed. All remarks should be directed at the whole Council. The presiding officer may refuse to recognize speakers, limit the time permitted for comments, and ask groups to select a spokesperson. **Comments may also be submitted in writing before the meeting, by mail, e-mail (to ocr@milwaukieoregon.gov), or in person to city staff.**

6. **CONSENT AGENDA** (5:25 p.m.)

Consent items are not discussed during the meeting; they are approved in one motion and any Council member may remove an item for separate consideration.

A. Approval of Council Meeting Minutes of:	2
1. May 21, 2024, work session, and	
2. May 21, 2024, regular session.	
B. Adoption of the Natural Hazard Mitigation Plan (NHMP) – Resolution	8
C. Approval of an Oregon Liquor and Cannabis Commission (OLCC) Application for Pietro’s Pizza, 11050 SE Oak Street – Limited On-Premises Sales	69
D. Approval of an OLCC Application for Taqueria Portland, 5821 SE Johnson Creek Blvd – Full On-Premises Sales	70

7. **BUSINESS ITEMS**
 - A. **None Scheduled.**

8. **PUBLIC HEARINGS**
 - A. **None Scheduled.**
9. **COUNCIL REPORTS** (5:30 p.m.)
10. **ADJOURNMENT** (5:40 p.m.)

COUNCIL RETREAT

After the special session Council will hold a retreat at the same location as the special session. The public may attend the retreat via the same in-person or Zoom options as the special session.

1. **Council Norms and Working Agreements – Discussion** (5:45 p.m.) **72**
Staff: Emma Sagor, Acting City Manager
2. **Financial Stability Strategy – Discussion** (7:00 p.m.)
Staff: Emma Sagor, Acting City Manager
Michael Osborne, Finance Director
3. **Looking Forward – Discussion** (7:30 p.m.)
Staff: Emma Sagor, Acting City Manager
4. **Adjourn** (8:00 p.m.)

Meeting Accessibility Services and Americans with Disabilities Act (ADA) Notice

The city is committed to providing equal access to public meetings. To request listening and mobility assistance services contact the Office of the City Recorder at least 48 hours before the meeting by email at ocr@milwaukieoregon.gov or phone at 503-786-7502. To request Spanish language translation services email espanol@milwaukieoregon.gov at least 48 hours before the meeting. Staff will do their best to respond in a timely manner and to accommodate requests. Most Council meetings are broadcast live on the [city's YouTube channel](#) and Comcast Channel 30 in city limits.

Servicios de Accesibilidad para Reuniones y Aviso de la Ley de Estadounidenses con Discapacidades (ADA)

La ciudad se compromete a proporcionar igualdad de acceso para reuniones públicas. Para solicitar servicios de asistencia auditiva y de movilidad, favor de comunicarse a la Oficina del Registro de la Ciudad con un mínimo de 48 horas antes de la reunión por correo electrónico a ocr@milwaukieoregon.gov o llame al 503-786-7502. Para solicitar servicios de traducción al español, envíe un correo electrónico a espanol@milwaukieoregon.gov al menos 48 horas antes de la reunión. El personal hará todo lo posible para responder de manera oportuna y atender las solicitudes. La mayoría de las reuniones del Consejo de la Ciudad se transmiten en vivo en el [canal de YouTube de la ciudad](#) y el Canal 30 de Comcast dentro de los límites de la ciudad.

Executive Sessions

The City Council may meet in executive session pursuant to Oregon Revised Statute (ORS) 192.660(2); all discussions are confidential; news media representatives may attend but may not disclose any information discussed. Final decisions and actions may not be taken in executive sessions.



COUNCIL SPECIAL SESSION & RETREAT

City Hall Community Room, 10501 SE Main Street
& Zoom Video Conference (www.milwaukieoregon.gov)

MINUTES

JULY 9, 2024

Council Present: Councilors Will Anderson, Adam Khosroabadi, Rebecca Stavenjord, and Council President Robert Massey, and Mayor Lisa Batey

Staff Present: Joseph Briglio, Acting Assistant City Manager
Matt Deeds, Assistant Finance Director
Justin Gericke, City Attorney
Dan Harris, Events & Emergency Management Coordinator

Brent Husher, Library Director
Brandi Leos, Human Resources Director
Michael Osborne, Finance Director
Emma Sagor, Assistant City Manager
Scott Stauffer, City Recorder

Mayor Batey called the meeting to order at 5:21 p.m.

1. CALL TO ORDER

A. Pledge of Allegiance.

B. Native Lands Acknowledgment.

Councilor Khosroabadi arrived at 5:22 p.m.

2. ANNOUNCEMENTS

Mayor Batey noted upcoming community activities; see packet for details.

3. PROCLAMATIONS AND AWARDS

A. None Scheduled.

4. SPECIAL REPORTS

A. None Scheduled.

5. COMMUNITY COMMENTS

Mayor Batey noted the comment procedures. **Sagor** reported on comments from the June 18 meeting regarding the use of the Metro South Transfer Station by waste haulers who operate in the city and a community member request for a Council proclamation on the Palestinian conflict. No audience member wished to speak to Council.

6. CONSENT AGENDA

It was moved by Councilor Anderson and seconded by Council President Massey to approve the Consent Agenda as presented.

A. City Council Meeting Minutes:

1. May 21, 2024, work session, and
2. May 21, 2024, regular session.

B. Resolution 38-2024: A resolution of the City Council of the City of Milwaukie, Oregon, adopting an updated Natural Hazard Mitigation Plan (NHMP).

C. An Oregon Liquor and Cannabis Commission (OLCC) Application for Pietro's Pizza, 11050 SE Oak Street – Limited On-Premises Sales.

D. An OLCC Application for Taqueria Portland, 5821 SE Johnson Creek Blvd – Full On-Premises Sales.

Motion passed with the following vote: Councilors Anderson, Khosroabadi, Massey, and Stavenjord and Mayor Batey voting “aye.” [5:0]

7. BUSINESS ITEMS

A. None Scheduled.

8. PUBLIC HEARING

A. None Scheduled.

9. COUNCIL REPORTS

Councilor Anderson noted that a resolution in support of an ongoing Oregon Nurses Association (ONA) labor negotiation would be on the July 16 regular session agenda.

Councilor Stavenjord reported on a Homeless Solutions of Clackamas County meeting and the grand opening of a new day center in Oregon City.

Council President Massey thanked staff and the community for putting on great Juneteenth and Pride events.

Councilor Khosroabadi reported on a site tour of the Clackamas County Children’s Commission that the Clackamas County Community Advisory Board (CAB) had gone.

Mayor Batey discussed the city’s role in Metro’s proposed supportive housing services (SHS) bond measure. **Batey** and **Councilors Stavenjord and Khosroabadi** commented on possible responses to the community member request for a Council proclamation on the Israeli-Palestinian conflict.

10. ADJOURNMENT

Mayor Batey announced that after the special session Council would hold a retreat.

It was moved by Councilor Khosroabadi and seconded by Council President Massey to adjourn the special session. Motion passed with the following vote: Councilors Anderson, Khosroabadi, Massey, and Stavenjord and Mayor Batey voting “aye.” [5:0]

Mayor Batey adjourned the meeting at 5:38 p.m.

Mayor Batey called the retreat to order at 5:46 p.m.

COUNCIL RETREAT

1. Council Norms and Working Agreements – Discussion

The group participated in various discussions about Council meetings and group logistics, including the Council Communication Agreement and committee assignments.

Mayor Batey recessed the retreat at 8:08 p.m. and reconvened at 8:15 p.m.

2. Financial Stability Strategy – Discussion

Sagor and **Osborne** provided an overview of the city's financial circumstances and the group discussed strategies for stabilizing revenue sources.

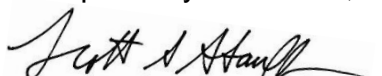
3. Looking Forward – Discussion

The group discussed previously identified Council projects and objectives for the Council's winter retreat.

4. Adjourn

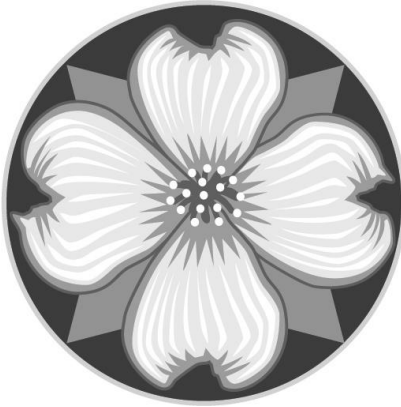
Mayor Batey called the retreat to order at 9:05 p.m.

Respectfully submitted,



Scott Stauffer, City Recorder

This page intentionally left blank.



RS Agenda Item

6

Consent Agenda

COUNCIL WORK SESSION

City Hall Council Chambers, 10501 SE Main Street
& Zoom Video Conference (www.milwaukieoregon.gov)

MINUTES

MAY 21, 2024

Council Present: Councilors Shane Abma, Adam Khosroabadi, Rebecca Stavenjord, and Council President Robert Massey, and Mayor Lisa Batey

Staff Present: Joseph Briglio, Acting Assistant City Manager Emma Sagor, Acting City Manager
Justin Gericke, City Attorney Scott Stauffer, City Recorder
Peter Passarelli, Public Works Director

Mayor Batey called the meeting to order at 4:05 p.m. and noted that it was election day and Dogwood Day!

1. Transportation System Plan (TSP) Goals and Policy – Discussion

(removed from the agenda)

2. Supervisory Control and Data Acquisition (SCADA) – Update

Passarelli provided an overview of the SCADA project explaining the importance of the system for controlling and securing the city’s water and wastewater infrastructure, noting the project timeline and improvements in the new system.

The group remarked on the communication enhancements of the new system.

Council President Massey and **Passarelli** noted how the new system had been tested and implemented.

Councilor Abma and **Passarelli** commented on different alarm levels in the new system.

Mayor Batey and **Passarelli** noted that the city’s stormwater infrastructure did not interact with the SCADA system.

3. Staff Strategic Plan – Update

Sagor reviewed how and why the staff strategic plan had been created and provided an overview of the plan including staff values, priorities and objectives. **Councilor Stavenjord** commented on the importance of placemaking and how staff’s priorities support the community’s sense of inclusion. **Councilor Khosroabadi** suggested staff reach out to the 2-1-1 call center to provide information about city resources.

Sagor discussed how the staff strategic plan would be implemented over the next year with a focus on measuring outcomes and regular reporting.

Sagor asked for feedback on how Council would like to interact with the staff strategic plan and receive updates on the plan implementation. The group discussed how Council’s goals and work could align with the staff strategic plan, and how Council could interact with staff on the plan.

Sagor summarized that a joint Council and Equity Steering Committee (ESC) session would be scheduled to discuss the staff strategic plan.

The group discussed the feasibility of developing an artificial intelligence (AI) policy, plans for future staff surveys, and how the city supports the growth of staff career paths.

4. Council Reports

Councilor Khosroabadi reported on recent Clackamas County Water Environment Services (WES) budget meetings. **Councilor Abma** and **Passarelli** remarked on how low-income utility assistance programs work. **Mayor Batey** commented on WES' Kellogg Creek Wastewater Recovery Facility 50th anniversary event and suggested that Council encourage the North Clackamas Parks and Recreation District (NCPRD) Board to complete Milwaukie Bay Park. **Batey** provided several NCPRD related updates.

5. Adjourn

Mayor Batey adjourned the meeting at 5:33 p.m.

Respectfully submitted,

Scott Stauffer, City Recorder

COUNCIL REGULAR SESSION**MINUTES**

City Hall Council Chambers, 10501 SE Main Street
& Zoom Video Conference (www.milwaukieoregon.gov)

MAY 21, 2024

Council Present: Councilors Shane Abma, Adam Khosroabadi, Rebecca Stavenjord, and Council President Robert Massey, and Mayor Lisa Batey

Staff Present: Joseph Briglio, Acting Assistant City Manager
Mandy Byrd, Development Project Manager
Ryan Dyar, Associate Planner
Justin Gericke, City Attorney
Peter Passarelli, Public Works Director

Emma Sagor, Acting City Manager
Gabriela Santoyo Gutierrez, Equity & Inclusion Coordinator
Scott Stauffer, City Recorder
Jherica Zink, Administrative Specialist II

Mayor Batey called the meeting to order at 6:04 p.m.

1. CALL TO ORDER

A. Pledge of Allegiance.

B. Native Lands Acknowledgment.

2. ANNOUNCEMENTS

Mayor Batey noted it was election day and announced upcoming activities, including the State of the City address, the return of First Friday events, the curbside bulky waste pick-up days, and Juneteenth and Pride events.

Mayor Batey read a Haiku inspired by Dogwood Day and the May 21 election.

3. PROCLAMATIONS AND AWARDS**A. Dogwood Day – Proclamation**

Stauffer, Phyllis Hines with the Susannah Lee Barlow Chapter Daughters of the American Revolution (DAR), and the Milwaukie Historical Society's **Steven Bennett**, remarked on Dogwood Day and announced the winner of the 2024 #milwaukiedogwood Instagram photo contest. **Mayor Batey** proclaimed May 21st to be Dogwood Day.

B. Historic Preservation Month – Proclamation

Mayor Batey and **Bennett** remarked on preserving historic structures and updating the city's historic homes inventory. **Batey** proclaimed May to be Historic Preservation Month.

C. Memorial Day – Proclamation

Council President Massey remarked on recognizing those who lost their lives in the armed services and **Mayor Batey** proclaimed May 27th to be Memorial Day.

D. Asian American Pacific Islander (AAPI) Heritage Month – Proclamation

Councilor Khosroabadi and Milwaukie resident **Liz Start** commented on the importance of representation and inclusion and recognizing AAPI community members and their contributions to Milwaukie. **Mayor Batey** proclaimed May to be AAPI Heritage Month.

E. Public Works Week – Proclamation

Passarelli and **Zink** commented on the important work of public works staff in creating a safe city. **Mayor Batey** proclaimed May 19-25 to be Public Works Week.

4. SPECIAL REPORTS

A. None Scheduled.

5. COMMUNITY COMMENTS

Mayor Batey reviewed the comment procedures. **Sagor** reported there was no follow-up from the May 7 comments and noted that written correspondence regarding the Israeli-Palestinian conflict, the city’s tree code, and downtown parking had been submitted.

Rod Smith, Milwaukie resident, asked about the city’s plans to care for trees along Highway 224 and suggested the city allow community members help maintain trees on public property. **Mayor Batey** noted that several community groups hold work parties to clean-up natural areas around Milwaukie. **Smith** remarked on a prior occasion when the city had ignored **Smith’s** offer to help maintain trees on public property.

6. CONSENT AGENDA

It was moved by **Councilor Khosroabadi** and seconded by **Councilor Abma** to approve the Consent Agenda as presented.

A. City Council Meeting Minutes:

1. April 2, 2024, work session,
2. April 2, 2024, regular session,
3. April 9, 2024, study session,
4. April 16, 2024, work session, and
5. April 16, 2024, regular session.

B. Resolution 21-2024: A resolution of the City Council of the City of Milwaukie, Oregon, acting as the Local Contract Review Board, approving a construction contract for the 2024 slurry seal project to Black Line, Inc.

Motion passed with the following vote: **Councilors Abma, Khosroabadi, Massey, and Stavenjord** and **Mayor Batey** voting “aye.” [5:0]

7. BUSINESS ITEMS

A. None Scheduled.

8. PUBLIC HEARING

A. Solar Project Contracting Authorization – Ordinance

Call to Order: **Mayor Batey** called the public hearing on the proposed alternative contracting method, to order at 6:55 p.m.

Purpose: **Mayor Batey** announced that the purpose of the hearing was to hear the staff report and take public comment on the proposed contracting method.

Conflict of Interest: No Council member declared a conflict of interest.

Staff Presentation: **Passarelli** and **Byrd** provided an overview of the solar project at the city’s Johnson Creek Boulevard (JCB) facility and explained why an alternative contracting design-build method, was necessary for the project.

Councilor Abma and **Byrd** remarked on the benefits of design-build contracting.

Councilor Stavenjord and **Passarelli** commented on the feasibility of building solar arrays over open spaces instead of on existing rooftops.

Council President Massey, **Byrd**, and **Passarelli** noted the timeline for completing the project and using the grant funds before the grant fund expiration deadlines in 2025.

Mayor Batey remarked on the idea of covering parking areas with solar arrays.

Correspondence: No correspondence on the hearing topic had been received.

Audience Testimony: No audience member wished to address Council.

Close Public Comment: **It was moved by Councilor Khosroabadi and seconded by Council President Massey to close the public testimony part of the solar project alternative contracting method hearing. Motion passed with the following vote: Councilors Abma, Khosroabadi, Massey, Stavenjord, and Mayor Batey voting “aye.” [5:0]**

Mayor Batey closed the public comment part of the hearing at 7:09 p.m.

Council Decision: **It was moved by Councilor Khosroabadi and seconded by Council President Massey to approve the resolution, acting as the Local Contract Review Board, adopting findings in support of using the design-build alternative contracting for the Johnson Creek Solar Project. Motion passed with the following vote: Councilors Abma, Khosroabadi, Massey, and Stavenjord and Mayor Batey voting “aye.” [5:0]**

Resolution 22-2024:

A RESOLUTION OF THE CITY COUNCIL OF THE CITY OF MILWAUKIE, OREGON, ACTING AS THE LOCAL CONTRACT REVIEW BOARD, ADOPTING FINDINGS IN SUPPORT OF USING THE DESIGN-BUILD ALTERNATIVE CONTRACTING FOR THE JOHNSON CREEK SOLAR PROJECT.

B. Climate Friendly Equitable Communities (CFEC) Code Adoption – Ordinance

Call to Order: **Mayor Batey** called the CFEC code adoption hearing to order at 7:10 p.m.

Purpose: **Mayor Batey** announced that the purpose of the hearing was to hear the staff report and take public comment on the proposed code adoption.

Conflict of Interest: No Council member declared a conflict of interest.

Staff Presentation: **Briglio** introduced the topic. **Dyar** provided an overview of the state mandated CFEC code amendments, including how the amendments had been incorporated into the Milwaukie Municipal Code (MMC) related to off-street parking, parking lots, and bicycle parking.

Councilor Khosroabadi and **Dyar** commented on when tree canopy requirements would be triggered through CFEC parking lot related actions.

Council President Massey and **Dyar** noted the deadline to adopt the CFEC rules.

Mayor Batey and **Dyar** discussed how the CFEC process works for removing or shrinking existing parking lots, encouraged shared parking lots, and how the code brought pre-existing parking lots into compliance.

Correspondence: No correspondence on the hearing topic had been received.

Audience Testimony: No audience member wished to address Council.

Council Questions to Staff: **Councilor Stavenjord** appreciated how staff had incorporated the CFEC rules into the MMC.

Close Public Comment: **It was moved by Council President Massey and seconded by Councilor Stavenjord to close the public testimony part of the CFEC code adoption hearing. Motion passed with the following vote: Councilors Abma, Khosroabadi, Massey, Stavenjord, and Mayor Batey voting “aye.” [5:0]**

Mayor Batey closed the public comment part of the hearing at 7:33 p.m.

Council Decision: **Mayor Batey** and **Councilor Khosroabadi** expressed frustration with the CFEC rules imposed by the state on cities.

It was moved by Councilor Stavenjord and seconded by Councilor Abma for the first and second readings by title only and adoption of the ordinance, amending Municipal Code (MMC) Title 19 Zoning Ordinance for the purpose of addressing off-street parking requirements citywide as required under Transportation Planning Rule, Oregon Administrative Rule (OAR) 660-012-0400 – 0450 and OAR 660-012-0630 (File #ZA-2022-005). Motion passed with the following vote: Councilors Abma, Khosroabadi, Massey, and Stavenjord and Mayor Batey voting “aye.” [5:0]

Sagor read the ordinance two times by title only.

Stauffer polled the Council with **Councilors Abma, Khosroabadi, Massey, and Stavenjord** and **Mayor Batey** voting “aye.” [5:0]

Ordinance 2243:

AN ORDINANCE OF THE CITY OF MILWAUKIE, OREGON, AMENDING MUNICIPAL CODE (MMC) TITLE 19 ZONING ORDINANCE FOR THE PURPOSE OF ADDRESSING OFF-STREET PARKING REQUIREMENTS CITYWIDE AS REQUIRED UNDER THE TRANSPORTATION PLANNING RULE, OREGON ADMINISTRATIVE RULES (OAR) 660-012-0400 – 0450 AND OAR 660-012-0630 (FILE #ZA-2022-005).

9. COUNCIL REPORTS

Mayor Batey noted that Council had given reports at the May 21, 2024, work session and **Councilor Abma** noted the time of the upcoming Pride celebration event.

10. ADJOURNMENT

It was moved by Councilor Abma and seconded by Councilor Stavenjord to adjourn the Regular Session. Motion passed with the following vote: Councilors Abma, Khosroabadi, Massey, and Stavenjord and Mayor Batey voting “aye.” [5:0]

Mayor Batey adjourned the meeting at 7:40 p.m.

Respectfully submitted,

Scott Stauffer, City Recorder

COUNCIL STAFF REPORT

To: Mayor and City Council
Emma Sagor, Acting City Manager

Date Written: June 20, 2024

Reviewed: Joseph Briglio (as to form), Acting Assistant City Manager,
Peter Passarelli, Public Works Director, and
Gabriela Santoyo Gutierrez, Equity and Inclusion Coordinator

From: Dan Harris, Events and Emergency Management Coordinator

Subject: **Natural Hazards Mitigation Plan Adoption**

ACTION REQUESTED

Council is asked to adopt the attached Natural Hazards Mitigation Plan (NHMP).

HISTORY OF PRIOR ACTIONS AND DISCUSSIONS

[August 1, 2023](#): the events and emergency management coordinator met with Council to discuss progress made on the NHMP update and to receive feedback.

[August 15, 2023](#): the events and emergency management coordinator returned to Council to share updates from the Engage Milwaukie survey and changes made to the NHMP.

ANALYSIS

The NHMP is a federally mandated emergency planning document. Adopting an NHMP is an eligibility requirement for many federal disaster grants. The plan is intended both to cause jurisdictions to review their local natural hazards and to consider what actions might be taken to mitigate the effects of those hazards.

Milwaukie's NHMP is an addendum to the Clackamas County NHMP. The county, in partnership with the University of Oregon, has taken primary responsibility for formatting the document and establishing a timeline for the update.

Development of the NHMP occurs on a five-year cycle. Between fall 2022 and spring 2024, the attached NHMP went through a series of drafts shared and reviewed at the local, county, state, and federal levels. The local and county reviews included extensive public engagement as described below. Once adopted, the 2024 NHMP will be active until it is superseded in 2028.

Hazards Mitigation Advisory Committee

The Hazards Mitigation Advisory Committee (HMAC) serves as the local review and implementation body for the City of Milwaukie. HMAC members met several times during plan development and will continue to meet quarterly during the lifecycle of the NHMP to coordinate implementation.

The HMAC comprises representatives from the following city departments: public works, community development, police, and the city manager's office. A complete list of HMAC members who participated in the development of this plan can be found on page two of the attached NHMP. Milwaukie's events and emergency management coordinator serves as the convener for the HMAC.

Public Engagement

Members of the public were given numerous opportunities to review and comment on the updated NHMP during its development. Drafts of the plan were taken to the Public Safety Advisory Committee (PSAC) and Council four times during the summer and fall of 2023.

A near-final draft of the NHMP was posted to Engage Milwaukie in July and August 2023 for public comment. The Engage Milwaukie page was advertised through city social media, the Pilot, and through an email to relevant community partners, most notably the North Clackamas Urban Watersheds Council (NCWC) and the Milwaukie Community Emergency Response Team (CERT). Ultimately, the Engage Milwaukie page received 664 individual visits. Commentary from this page helped to refine the language used in the NHMP about Kellogg Dam removal and the location of facilities housing vulnerable populations.

Milwaukie's addendum draft was also included in Clackamas County's community review process in February and March 2024. No comments were received specifically related to Milwaukie's draft during this process.

Hazards Ranking

The HMAC used a standardized hazard analysis matrix to rank the relative threat presented by ten natural hazards identified by the Federal Emergency Management Agency (FEMA). These hazards are listed in order on Table 4 of the NHMP and include winter storms, earthquakes, and volcanic eruptions, among others. Wildfire (due to the risk of extreme air pollution) and earthquakes were identified as being the most significant hazards to Milwaukie.

Action Items

Implementation of the NHMP is carried out through eight action items identified by the HMAC. All action items included in this updated NHMP are part of existing work plans for their respective departments. For example, debris management planning and coordination are listed as action item 3 and are part of the ongoing work of the city's public works department.

Action item progress is reviewed on a quarterly basis during HMAC meetings. A complete list of action items is included as Table MI-1 in the NHMP.

BUDGET IMPACT

None. The action items described in this report are all already in line with existing departmental work plans.

CLIMATE IMPACT

This plan was developed in conjunction with the climate and natural resources program manager and the public works department to ensure conformity of NHMP goals and actions with those of the city's Climate Action Plan (CAP). Any climate impact from implementation of the NHMP would most likely have occurred in the normal course of work.

EQUITY IMPACT

This updated NHMP was developed with specific consideration to the disparate impact of natural hazards across the Milwaukie community due to factors including systemic racism, financial and housing instability, and English language fluency/literacy.

Action item 2 calls for increased hazard awareness and city outreach, especially to vulnerable populations. Outreach materials are available in English and Spanish and can be translated to

other languages. To the extent that residents are requested to act, limited planning time and budget are considered in those requests.

WORKLOAD IMPACT

None. As noted, the action items included in the NHMP are all already included in various departmental work plans.

COORDINATION, CONCURRENCE, OR DISSENT

Milwaukie’s HMAC, representing an array of city departments, has reviewed and approved this NHMP.

STAFF RECOMMENDATION

Staff recommends that Council adopt the NHMP as written. The plan has been reviewed and approved by the Milwaukie HMAC, Clackamas County Disaster Management, the Oregon Department of Emergency Management, and FEMA.

ATTACHMENTS

1. Adoption Resolution
2. NHMP Final Adoption Draft

COUNCIL RESOLUTION No.**A RESOLUTION OF THE CITY COUNCIL OF THE CITY OF MILWAUKIE, OREGON, ADOPTING AN UPDATED NATURAL HAZARDS MITIGATION PLAN (NHMP).**

WHEREAS the City of Milwaukie recognizes the threat that natural hazards pose to people, property, and infrastructure within our community; and

WHEREAS undertaking hazard mitigation actions will reduce the potential for harm to people, property, and infrastructure from future hazard occurrences; and

WHEREAS an adopted Natural Hazards Mitigation Plan is required as a condition of future funding for mitigation projects under multiple Federal Emergency Management Administration (FEMA) pre- and post-disaster mitigation grant programs; and

WHEREAS the city has identified natural hazard risks and prioritized a number of proposed actions and programs to mitigate the vulnerabilities of the city to the impacts of future disasters within the Clackamas County Multi-Jurisdictional Natural Hazards Mitigation Plan; and

WHEREAS these proposed projects and programs have been incorporated into the Clackamas County Multi-Jurisdictional Natural Hazards Mitigation Plan that has been prepared for consideration and implementation by the participating cities and special districts of Clackamas County; and

WHEREAS the Oregon Department of Emergency Management and FEMA Region X officials have reviewed the Clackamas County Multi-Jurisdictional Natural Hazards Mitigation Plan and pre-approved it on May 29, 2024, contingent upon official adoption by participating governments and entities.

Now therefore, be it Resolved by the City Council of the City of Milwaukie, Oregon, that the City of Milwaukie adopts the NHMP and directs the city manager to develop, approve, and implement the mitigation strategies and any administrative changes to the NHMP.

And be it further Resolved that the City of Milwaukie adopts the Clackamas County Multi-Jurisdictional Natural Hazards Mitigation Plan as an official plan.

And be it further Resolved that the City of Milwaukie will submit this adoption resolution to the Oregon Department of Emergency Management and FEMA Region X officials to enable final approval of the Clackamas County Multi-Jurisdictional Natural Hazards Mitigation Plan.

Introduced and adopted by the City Council on **July 9, 2024**.

This resolution is effective immediately.

ATTEST:

Scott S. Stauffer, City Recorder

Lisa M. Batey, Mayor

APPROVED AS TO FORM:

Justin D. Gericke, City Attorney

City of Milwaukie Addendum to the Clackamas County Multi-Jurisdictional Natural Hazard Mitigation Plan



Photo Credit: City of Milwaukie

Effective:

April XX, 2024-April XX, 2029

Prepared for
The City of Milwaukie

Updated:

Date, 2024, (Resolution # X-2024)

January 21, 2020, (Resolution # 8-2020)

2013

2009

SPS12

This Natural Hazard Mitigation Plan was prepared by:



Planning grant funding provided by:



Federal Emergency Management Agency (FEMA)

Project Award Number: DR-4562-39-P-OR

Additional Support Provided by:



This material is a result of tax-supported research and, as such, is not copyrightable. It may be freely reprinted with the customary crediting of the source.

Table of Content

PURPOSE	1
NHMP PROCESS, PARTICIPATION AND ADOPTION	1
<i>Convener</i>	1
NHMP IMPLEMENTATION AND MAINTENANCE	2
<i>Implementation through Existing Programs</i>	3
CAPABILITY ASSESSMENT	3
<i>Existing Authorities</i>	3
<i>Policies and Programs</i>	6
<i>Personnel</i>	8
<i>Capital Projects</i>	8
<i>Capital Resources</i>	7
<i>Findings</i>	7
MITIGATION PLAN MISSION	8
MITIGATION PLAN GOALS.....	8
MITIGATION STRATEGY	9
<i>Mitigation Successes</i>	7
RISK ASSESSMENT	13
<i>Hazard Analysis</i>	13
<i>Community Characteristics</i>	15
<i>Community Lifelines</i>	18
<i>Hazard Characteristics</i>	23
ATTACHMENT A: ACTION ITEM CHANGES.....	45
ATTACHMENT B: PUBLIC INVOLVEMENT SUMMARY	47

List of Tables

TABLE MI-1 ACTION ITEMS	11
TABLE MI-2 HAZARD ANALYSIS MATRIX	14
TABLE MI-3 COMMUNITY CHARACTERISTICS	17
TABLE MI-4 CRITICAL FACILITIES	18
TABLE MI-5 RAPID VISUAL SURVEY SCORES	28
TABLE MI-6 EXPECTED DAMAGES AND CASUALTIES FOR THE CSZ FAULT AND PORTLAND HILLS FAULT: EARTHQUAKE, SOIL MOISTURE, AND EVENT TIME SCENARIOS.....	29
TABLE MA-8 REPETITIVE LOSS AND SEVERE REPETITIVE LOSS PROPERTIES DETAIL	34
TABLE MI-8 STATUS OF ALL HAZARD MITIGATION ACTIONS IN THE PREVIOUS PLAN	46

List of Figures

FIGURE MI-1: UNDERSTANDING RISK.....	13
FIGURE MI-2 CASCADIA SUBDUCTION ZONE EXPECTED SHAKING.....	24
FIGURE MI-3 ACTIVE CRUSTAL FAULTS, EPICENTERS (1971-2008), AND SOFT SOILS	26
FIGURE MI-4 FEMA FLOOD ZONES.....	31
FIGURE MI-5 LANDSLIDE SUSCEPTIBILITY EXPOSURE.....	36
FIGURE MI-6 WILDFIRE RISK	42

Purpose

This is an update of the Milwaukie addendum to the Clackamas County Multi-Jurisdictional Natural Hazard Mitigation Plan (NHMP). This addendum supplements information contained in Volume I (Basic Plan) which serves as the NHMP foundation and Volume III (Appendices) which provide additional information. This addendum meets the following requirements:

- Multi-Jurisdictional **Plan Adoption** §201.6(c)(5),
- Multi-Jurisdictional **Participation** §201.6(a)(3),
- Multi-Jurisdictional **Mitigation Strategy** §201.6(c)(3)(iv) and
- Multi-Jurisdictional **Risk Assessment** §201.6(c)(2)(iii).

Updates to Milwaukie’s addendum are further discussed throughout the NHMP and within Volume III, Appendix B, which provides an overview of alterations to the document that took place during the update process.

Milwaukie adopted their addendum to the Clackamas County Multi-jurisdictional NHMP on [DATE TBD, 2024]. FEMA Region X approved the Clackamas County NHMP on [DATE TBD, 2024] and the City’s addendum on [DATE TBD, 2024]. With approval of this NHMP the City is now eligible to apply for the Robert T. Stafford Disaster Relief and Emergency Assistance Act’s hazard mitigation project grants through [DATE TBD-1, 2024].

NHMP Process, Participation and Adoption

This section of the NHMP addendum addresses 44 CFR 201.6(c)(5), *Plan Adoption*, and 44 CFR 201.6(a)(3), *Participation*.

Milwaukie first developed an addendum to Clackamas County’s Natural Hazard Mitigation Plan in 2003. This plan was updated in 2009, 2012/2013, and in 2018/2019.

In addition to establishing a comprehensive community-level mitigation strategy, the Disaster Mitigation Act of 2000 (DMA2K), and the regulations contained in 44 CFR 201, require that jurisdictions maintain an approved NHMP to receive federal funds for mitigation projects. Local adoption, and federal approval of this NHMP ensures that the city will remain eligible for pre- and post-disaster mitigation project grants.

The Oregon Partnership for Disaster Resilience (OPDR) at the University of Oregon’s Institute for Policy Research, and Engagement (IPRE) collaborated with the Oregon Office of Emergency Management (OEM), Clackamas County, and Milwaukie to update their NHMP.

The Clackamas County NHMP, and Milwaukie addendum, are the result of a collaborative effort between citizens, public agencies, non-profit organizations, the private sector, and regional organizations. The Milwaukie HMAAC guided the process of developing the NHMP.

Convener

The Milwaukie Events & Emergency Management Coordinator serves as the NHMP addendum convener. The convener of the NHMP will take the lead in implementing, maintaining, and updating the addendum to the Clackamas County NHMP in collaboration with the designated convener of the Clackamas County NHMP (Clackamas County Resilience Coordinator).

Representatives from the City of Milwaukie HMAC met formally and informally, to discuss updates to their addendum (Volume III, Appendix B). The HMAC reviewed and revised the City’s addendum, with focus on the NHMP’s risk assessment and mitigation strategy (action items).

This addendum reflects decisions made at the designated meetings and during subsequent work and communication with the Clackamas County Resilience Coordinator, and the OPDR. The changes are highlighted with more detail throughout this document and within Volume III, Appendix B. Other documented changes include a revision of the City’s risk assessment and hazard identification sections, NHMP mission and goals, action items, and community profile.

The Milwaukie HMAC was composed of the following representatives:

- Convener, Dan Harris, Events and Emergency Management Coordinator
- Luke Strait, Police Chief
- Robbie Graves, Police Captain
- Damien Farwell, Fleet and Facilities Supervisor
- Mike Harman, Acting Fleet and Facilities Supervisor
- Nick Lindekugel, GIS Coordinator
- Natalie Rogers, Climate and Natural Resources Manager
- Peter Passarelli, Public Works Director
- Steve Adams, City Engineer
- Jennifer Garbely, City Engineer
- Patrick McLeod, Building Official
- Joseph Briglio, Community Development Director
- Brett Kelter, Senior Planner

The HMAC served as the local review body for the NHMP update.

NHMP Implementation and Maintenance

The City Council will be responsible for adopting the Milwaukie addendum to the Clackamas County NHMP. This addendum designates a HMAC and a convener to oversee the development and implementation of action items. Because the City addendum is part of the County’s multi-jurisdictional NHMP, the City will look for opportunities to partner with the County. The City’s HMAC will convene after re-adoption of the Milwaukie NHMP addendum on an annual schedule. The County is meeting on a semi-annual basis and will provide opportunities for the cities to report on NHMP implementation and maintenance during their meetings. The city’s Events & Emergency Management Coordinator will serve as the convener and will be responsible for assembling the HMAC. The HMAC will be responsible for:

- Reviewing existing action items to determine suitability of funding;
- Reviewing existing and new risk assessment data to identify issues that may not have been identified at NHMP creation;
- Educating and training new HMAC members on the NHMP and mitigation actions in general;
- Assisting in the development of funding proposals for priority action items;
- Discussing methods for continued public involvement;
- Evaluating effectiveness of the NHMP at achieving its purpose and goals (use Table 26, Volume I, Section 4, as one tool to help measure effectiveness); and
- Documenting successes and lessons learned during the year.

The HMAC will be responsible for the following activities described in detail in Volume I, Section 4.

The jurisdiction will utilize the same implementation and maintenance process identified in Volume I, Section 4.

The jurisdiction will provide continued public participation during the plan maintenance process through periodic presentations to elected officials, public meetings, postings on social media, and/or through interactive content on the jurisdiction's website (for more information see Volume I, Section 4).

The jurisdiction will utilize the same action item prioritization process as the County (for more information see Volume I, Section 4 and Volume III, Appendix E).

Implementation through Existing Programs

This NHMP is strategic and non-regulatory in nature, meaning that it does not necessarily set forth any new policy. It does, however, provide: (1) a foundation for coordination and collaboration among agencies and the public in the city; (2) identification and prioritization of future mitigation activities; and (3) aid in meeting federal planning requirements and qualifying for assistance programs. The mitigation plan works in conjunction with other city plans and programs including the Comprehensive Land Use Plan, Capital Improvements Plan, and Building Codes, as well as the Clackamas County NHMP, and the State of Oregon NHMP.

The mitigation actions described herein (and in Attachment A) are intended to be implemented through existing plans and programs within the city. Plans and policies already in existence have support from residents, businesses, and policy makers. Where possible, Milwaukie will implement the NHMP's recommended actions through existing plans and policies. Many land-use, comprehensive and strategic plans get updated regularly, allowing them to adapt to changing conditions and needs. Implementing the NHMP's action items through such plans and policies increases their likelihood of being supported and implemented. Implementation opportunities are further defined in action items when applicable.

Capability Assessment

The Capability Assessment identifies and describes the ability of the City of Milwaukie to implement the mitigation strategy and associated action items. Capabilities can be evaluated through an examination of broad categories, including: existing authorities, policies, programs, funding, and resources. As applicable the 2019 NHMP was integrated into these authorities/documents over the last five years (e.g., land use regulations, capital improvement plan, etc.).

Existing Authorities

Hazard mitigation can be executed at a local scale through three (3) methods: integrating hazard mitigation actions into other local planning documents (i.e., plan integration), adopting building codes that account for best practices in structural hardening, and codifying land use regulations and zoning designations that prescribe mitigation into development requirements. The extent to which a municipality or multi-jurisdictional effort leverages these approaches is an indicator of that community's capabilities.

Comprehensive Plan

Oregon's Statewide Planning Goal 7 requires comprehensive planning within every jurisdiction that is designed to reduce risks to people and property from natural hazards.

Milwaukie adopted a new Comprehensive Plan document in August 2020. The Community Vision in the Comprehensive Plan includes the statement: “Milwaukie is a resilient community, adaptive to the realities of a changing climate, and prepared for emergencies, such as the Cascadia Event.” The [Environmental Stewardship and Community Resiliency](#) chapter addresses Statewide Planning Goal 7 Natural Hazards. It includes “important issues that have gained prominence more recently, such as climate change adoption and mitigation” in Subsection 5, Natural Hazards. This chapter reflects the findings and recommendations of the Milwaukie Climate Action Plan (2018), Milwaukie Hazard Mitigation Plan (2020), and Clackamas County Multi-Jurisdictional Hazard Mitigation Plan (2019).

Hazards specifically called out include flooding, landslides, weak foundation soils, earthquakes, high winds, and wildfires. Key issues include climate change, Cascadia Subduction Zone Earthquake, and vulnerable populations. Goals identify areas with high natural hazard potential and develop policies and programs to avoid or reduce potential negative impact, expand partnerships and education, ensure that the City’s build environment and infrastructure are adequately prepared, and develop programs for adaptation and mitigation. This includes a prohibition against building essential facilities that serve vulnerable populations in areas at risk from flooding, landslides, liquefaction, and fire.

Planned updates to the jurisdiction’s Goal 7 element or its broader comprehensive plan will reflect the data and findings within this NHMP and integrate analyses of future climate and natural hazard impacts into the community’s long-range plans.

Land Use Regulations

Existing land use policies that define zoning and address hazardous conditions provide another source of mitigation capability.

Title 3 of the Metro Urban Growth Management Functional Plan

This policy requires the city to balance any fill in the floodplain with a corresponding cut that excavates an equal amount of material. In addition, Title 3 requires the city to regulate the area of inundation from the 1996 flood in addition to the area with a 1% chance of flooding as identified on National Flood Insurance Program (NFIP) maps.

Municipal Development Codes

The Planning Department maintains and implements the Comprehensive Plan and other planning documents, and implements the community’s development standards through the Zoning, Land Division, and Sign Ordinances. They work closely with the County and neighboring jurisdictions to ensure plans are aligned.

Examples of Municipal Code sections that directly relate to resilience and mitigation efforts include:

- Title 16 Environment
 - Includes Chapter 16.12 Seismic Conditions, Chapter 16.16 Weak Foundation Soils, and Chapter 16.28 Erosion Control.
- Title 18 Flood Hazard Regulations
 - Adopted 2021 by Ordinance 2199, this section enforces the National Flood Insurance Program requirements within the city limits. Special flood hazard areas are those identified in the Flood Insurance Study for Clackamas County, Oregon and Incorporated Areas,” dated January 18, 2019, with accompanying FIRMs 4100C0009D, 4100C0017D, 4100C0028D, and 4100C0036D. The February 1996 flood inundation area identified by the Metro Water Quality and Flood Management Area is also incorporated by reference. Their flood prevention code section is based on the Oregon Model Flood Hazard

Prevention code, which includes provisions addressing substantial improvement/substantial damage.

- Title 19 Zoning
 - Title 19 includes land use standards for all zones and uses within the city.
- Title 12 Public Services
 - Includes development standards to meet provisions of the City’s NPDES permit, including design standards for water quality facilities.

Structural Building Codes

The Oregon Legislature recently adopted updated building codes for both residential (2023 adoption) and commercial structures (2022) since the last update of this Plan. These building codes are based on the 2021 version of the International Building Code, International Fire Code, and International Existing Building Code.

The Milwaukie **Community Development Department** oversees the following departments and services:

The **Planning Division** regulates growth and development in the city of Milwaukie by administering the city’s Comprehensive Plan and Municipal Code related to zoning and land division. Tasks range from implementing existing zoning regulations to assisting city Council with land use and growth planning policy development. Planning is also responsible for regulating development impacts in natural resource areas.

The **Building Division** is responsible for plan review and inspections on commercial, industrial, and residential developments, as well as fire life and safety plan review. The Division administers and enforces the 2022 Oregon Fire Code, the 2022 Oregon Structural Specialty Code, Mechanical Specialty Code, Plumbing Specialty Code, Electrical Specialty Code, and Residential Specialty Code.

The **Engineering Department** provides quality engineering services to ensure that all city utilities, including wastewater collection, water, streets, and storm water infrastructure, meet all municipal code requirements, are efficiently managed at the lowest cost to ratepayers, and serve the long-term needs of the community. In addition, the Engineering Department provides floodplain management and regulation for the city.

Public Works

The City of Milwaukie Public Works Department is composed of the divisions responsible for stormwater, wastewater, water, streets, facilities, natural resources, and the city’s fleet. Much of their work is associated with the reduction of hazards to the community and the implementation of resilience measures.

The **Public Works Department** provides many of the basic urban services to the citizens of Milwaukie including the following:

The **Stormwater Division** conducts regular sewer line cleaning and inspection. The Stormwater Division maintains all the components that comprise the city's stormwater infrastructure, valued at over \$6,094,886. The various components of the system include: 1190 catch basins, 548 manholes, 62 sedimentation-manholes, 197 drywells, 37 miles of pipe and open ditches, and 5 detention ponds. It uses information from inspections for ongoing analysis of the sewer system components and capital needs assessment, and on the spot pipe rehabilitation to minimize sewer back-ups.

The **Wastewater Division** is responsible for the maintenance of the city’s wastewater (sanitary sewer) system. The Wastewater Division maintains all the components that comprise the city's wastewater

infrastructure, valued at over \$7,029,552. The various components of the system include: 75 miles of sanitary sewer, 5 lift stations, and 1,607 manholes.

The **Water Division** is responsible for the supply and distribution of drinking water. The Water division maintains all the components that comprise the city's infrastructure, valued at over \$16,516,356. The various components of the system include: 100 miles of water main, 964 fire hydrants, 6,911 water services, 7 well houses, 3 storage reservoirs and 4 pump stations. The division ensures that the city's water storage and distribution systems comply with all state and federal regulations.

The **Streets Division** maintains all the components that comprise the city's infrastructure, valued at over \$38,785,042. The various components of the system include: 75 miles of road surface, signage, and street pavement markings.

The **Fleet Division** maintains all the city's vehicles and equipment including police cars, sweepers, excavators, dump trucks and 150 pieces of small equipment and generators. And, the **Facilities Division** is responsible for maintaining all city facilities.

The **Natural Resources Division** is responsible for the maintenance of green infrastructure in the city, including management of the urban forest. It also ensures that the city complies with the National Discharge Elimination System (NPDES) to protect surface water quality. The Natural Resources division also leads the city's climate work and environmental outreach and education.

City Administration

The City Council of Milwaukie has the responsibility of developing and adopting the annual city budget. Integrating hazard mitigation goals and projects into the annual budget is key to implementing the plan. The City Council tries to broadly address resilience planning needs while it determines city and departmental priorities and looks for multiple-impact projects wherever possible. They also work with staff to apply for federal and state grant funding to pursue larger projects that are outside of general fund capacity.

The **Office of the City Manager** is responsible for taking charge of the daily supervision of city affairs. The Events & Emergency Management Coordinator is assigned to this department.

Policies and Programs

This Plan directs Milwaukie and Clackamas County to explore integration into other planning documents and processes. Milwaukie has made significant progress in integrating the NHMP into its portfolio of planning processes and programs over the last five years.

Transportation System Plan 2025

The City has begun a comprehensive Transportation System Plan update (updating the original 2008 document, which was partially updated in 2013). One of the broad goals for the update is to “improve Milwaukie’s ability to recover from severe storms or an earthquake.”

Water System Master Plan 2021

This 2021 Water Master Plan (2021 WMP) updates the City of Milwaukie’s 2010 Water Master Plan. The 2021 WMP describes current conditions of the City’s water system and addresses projected future needs. Information in the 2021 WMP enables City staff to respond effectively to new water system demand for future development. It includes a capital improvement program (CIP) designed to meet current and future demand and to replace aging and seismically non-resilient assets. The 2021 WMP includes an assessment of seismic resiliency of public water system assets in compliance with Oregon Health

Authority requirements and identifies water system risks associated with natural hazards and malevolent act based on the U.S. Environmental Protection Agency’s comprehensive list of water system threats.

Stormwater Management

Under the Clean Water Act, the City of Milwaukie is permitted to manage storm water in a manner that reduces pollution from entering local streams and groundwater to the maximum extent practicable. The division develops and oversees the Capital Improvement Program (CIP) for replacing or upgrading Stormwater infrastructure found in the 2014 Stormwater Management Plan.

The Stormwater division must ensure that the work is done in compliance with the National Pollutant Discharge Elimination System (NPDES) Permit. This Division has an aggressive sweeping cycle of every eight days to meet NPDES MS4 Permit requirements and it is committed to an ongoing education program for its employees to keep up with the evolving changing technology, rules, and regulations.

TMDL Plan

The City maintains a Total Maximum Daily Load (TMDL) Plan (updated in 2022). The Total Maximum Daily Load (TMDL) program is intended to comply with the Willamette Basin TMDL order and to address the Revised Willamette Basin Mercury TMDL (effective February 2021). The goal of this Implementation Plan is to minimize and reduce temperature, bacteria, mercury, and DDT/dieldrin (Johnson Creek only) contributions to surface waters within Milwaukie. The NHMP actions are incorporated into this document as appropriate. Example projects include erosion control education and enforcement, stormwater conveyance system cleaning and maintenance, and consistent street cleaning.

Community Wildfire Protection Plan

The Clackamas County Community Wildfire Protection Plan (CWPP) will be incorporated into this Plan as a functioning annex. The NHMP will also be integrated into the City’s Capital Improvement Plan, to be adopted by early 2024.

National Flood Insurance Program

Milwaukie participates in the National Flood Insurance Program. The Engineering and Planning Divisions and Public Works share responsibility for administering the day-to-day activities of the city’s floodplain program.

Specifically, the floodplain manager is responsible for:

- maintains and administers Milwaukie’s floodplain regulations;
- reviews and issues floodplain development permits;
- maintains elevation certificates for all new and substantially improved structures (and maintains an extensive database of historic elevation certificates);
- ensures that encroachments do not occur within the regulated floodway;
- implements measures to ensure that new and substantially improved structures are protected from flood losses;
- maintains floodplain studies and maps and makes this information available to the public;
- maintains a flood information website with digital flood insurance rate map (DFIRM) data;
- conducts site visits to assess conditions and provide technical assistance to the public;
- maintains a library of historical flood related information;
- informs the public of flood insurance requirements; and
- conducts outreach and training about flood hazards and development within the floodplain.

Community Emergency Response Teams (CERT)

The Milwaukie CERT program was founded in 2010 and includes active and reserve members who meet periodically for training and to conduct drills that prepare them to help in responding to natural hazards – such as flooding, earthquakes, and snow/ice – that impact Milwaukie.

Personnel

The following Milwaukie personnel have assignments related to natural hazard mitigation planning and implementation:

Emergency Management: Dan Harris, Events & Emergency Management Coordinator

Public Information Officer: Jordan Imlah, Communication Program Manager

Floodplain Manager: Brett Kelter, Senior Planner

Grant writing (for Public Works or emergency management): Dan Harris, Events & Emergency Management Coordinator

Capital improvement planning: Jennifer Garbely, City Engineer

Capital improvement execution: Jennifer Garbely, City Engineer

Milwaukie does not have any employees solely designated to Emergency Management or Mitigation. These personnel integrate hazards and resilience planning into their greater work programs to the best of their abilities. However, there is limited capacity to expand upon their capabilities or workloads.

Capital Projects

Milwaukie has implemented recommendations from the last NHMP into its capital improvement projects over the last 5 years, including:

The following mitigation-related or resilience projects are a sample of those completed prior to 2018:

- Ardenwald Elementary reconstruction (2010)

The following mitigation-related or resilience projects have been completed since 2019:

- Milwaukie High School reconstruction

Ongoing projects that enhance the City's resilience include:

- Public Safety Building seismic upgrade

Proposed projects that relate to hazard mitigation and resilience within the next five years include:

- Seismic evaluation of Stanley Reservoir and performance of required retrofit
- Seismic evaluation of wells, pumphouses, and 3rd Pressure Zone building.
- Removal of Kellogg Dam in 2027-2028. The project will include habitat restoration on lower Kellogg Creek.

Mitigation Successes

The community has several examples of mitigation success including the following projects funded through FEMA [Hazard Mitigation Assistance](#) and the Oregon Infrastructure Finance Authority's [Seismic Rehabilitation Grant Program](#)¹.

FEMA Funded Mitigation Successes

- 2016: FMA-PJ-10-OR-2016-002, *Rusk Road Acquisition/demolition* (\$395,485) In City
- 2016: FMA-PJ-10-OR-2016-003, *Acquisition/demolition* (\$474,078) In City

Seismic Rehabilitation Grant Program Mitigation Successes

- 2022: Public Safety Building (\$1,233,817) *-in process*

Capital Resources

Milwaukie maintains several capital resources that have important roles to play in the implementation of the natural hazard mitigation plan.

Critical facilities with power generators for use during emergency blackouts include: City Hall, the Public Safety Building, and several Public Works facilities around the city.

Warming or cooling shelters include: The City's Ledding Library acts as a de facto warming/cooling center during operating hours. Discussions are underway with Clackamas County to expand its capacity as a cooling center and to identify private providers for a warming shelter within the city.

Food pantries include: The city does not maintain any food pantries. Pantries are maintained by Providence Milwaukie Hospital, the North Clackamas School District, the LoveOne community organization, and other non-city organizations.

Fueling storage: The city does not maintain fueling services following the decommissioning of its fueling center at its Johnson Creek Boulevard facility. The city relies on commercial fueling centers for gasoline and diesel fuel.

Findings

Several important findings from this capability assessment informed the design of the Plan's mitigation strategy and aided in prioritizing action items.

Staffing Limitations and Capacity

Milwaukie staff are assigned hazard mitigation responsibilities as a part of their larger job responsibilities. Restricted capacity reduces the breadth of the programming the community can undertake in any year. The city relies upon its relationships with the County and other cities within its region to expand its operations.

¹ The Seismic Rehabilitation Grant Program (SRGP) is a state of Oregon competitive grant program that provides funding for the seismic rehabilitation of critical public buildings, particularly public schools, and emergency services facilities.

Reliance upon outside funding streams and local match requirements

Milwaukie operates on a limited budget with many conflicting priorities. The city incorporates hazard mitigation as part of infrastructure and other projects, even where hazard mitigation is not the primary purpose of those projects. The city relies upon state and federal grant funds as the primary means for securing mitigation funding. Hazard mitigation grants such as HMGP and BRIC require 10-25% local funding match, as well as extra staff capacity and expertise to navigate the application process and manage the funding.

Leveraging Partnerships with Public and Nonprofit Entities

Regional planning displayed in Community Wildfire Protection Planning process demonstrates the City's ability to effectively share information and identify priority needs.

Mitigation Plan Mission

The 2024 HMAC reviewed the previous NHMP Mission and Goals in comparison to the State NHMP Goals and determined that they would make necessary updates to include references to community lifelines and to advance equity and inclusion in hazard mitigation.

The NHMP mission states the purpose and defines the primary functions of NHMP. It is intended to be adaptable to any future changes made to the NHMP and need not change unless the community's environment or priorities change.

The mission of the NHMP is to:

“Enhance county resiliency and capacity to address natural hazards by promoting sound public policy and effective mitigation strategies designed to equitably reduce risk and impacts on community members, community lifelines, historic and cultural resources property, and ecological systems.”

This can be achieved by increasing public awareness, documenting the resources for risk reduction and loss-prevention, and identifying activities to guide the county towards building a safer, more sustainable community.

Mitigation Plan Goals

Mitigation plan goals are more specific statements of direction that residents and public and private partners can take while working to reduce the risk from natural hazards. These statements of direction form a bridge between the broad mission statement and action items. The goals listed here serve as checkpoints as agencies and organizations begin implementing mitigation action items.

Meetings with the HMAC, previous hazard event reports, and the previous NHMPs served as methods to obtain input and identify priorities in developing goals for reducing risk and preventing loss from natural hazards.

All the NHMP goals are important and are listed below in no order of priority. Establishing community priorities within action items neither negates nor eliminates any goals, but it establishes which action items to consider implementing first, should funding become available.

Goal 1: Protect Life and Property

- Develop and implement mitigation and climate adaptation projects and policies that aid in protecting lives by making homes, businesses, community lifelines, and other property more resilient to natural hazards and impacts from climate change.
- Establish mitigation projects and policies that minimize losses and repetitive damages from recurring disasters while promoting insurance coverage for severe hazards.
- Improve hazard identification and risk assessment information to inform and provide recommendations for enhanced resilience in new development decisions and promote preventative measures for existing development in areas vulnerable to natural hazards.

Goal 2: Enhance Natural Systems

- Incorporate natural hazard mitigation planning and activities into watershed planning, natural resource management, natural systems enhancement, and land use planning to protect life, property, and ecological system.

Goal 3: Augment Emergency Services

- Strengthen emergency operations by enhancing communication, collaboration, and coordination of natural hazard mitigation activities and policies across agencies at all levels and regions of government, sovereign tribal nations, and the private sector.

Goal 4: Encourage Partnerships for Implementation

- Improve communication, coordination, and participation among and with public agencies, community members, community lifelines, and private sector organizations to prioritize and implement hazard mitigation activities and policies.
- Enhance efforts toward identifying and optimizing opportunities across state agencies, surrounding communities, and private entities for resource sharing, mutual aid, and funding sources/support.

Goal 5: Promote Public Awareness

- Build community resilience and awareness and reduce the effects of natural hazards and climate change through community-wide engagement, collaboration, resource-sharing, learning, leadership-building, and identifying mitigation project-related funding opportunities.

Goal 6: Advance Equity and Inclusion

- Mitigate the inequitable impacts of natural hazards by prioritizing the directing of resources and efforts to build resilience and engagement in the most vulnerable communities least able to prepare, respond, and recover.
- Strengthen efforts aimed at increasing engagement, outreach, and collaboration with community and cultural organizations and agencies that are dedicated to providing services and support to vulnerable and underserved communities.

Mitigation Strategy

This section of the NHMP addendum addresses 44 CFR 201.6(c)(3(iv), *Mitigation Strategy*.

The City's mitigation strategy (action items) was first developed during the 2009 NHMP planning process and revised during subsequent NHMP updates. During these processes, the HMAC assessed the City's risk, identified potential issues, and developed a mitigation strategy (action items).

During the 2023 update process, the City re-evaluated their mitigation strategy (action items). During this process action items were updated, noting if the action is complete, not complete and whether the

actions were still relevant; any new action items were identified at this time (see Attachment B for more information on changes to action items).

Action Items

Table MI-1 documents the title of each action along with, the lead organization, partners, timeline, cost, and potential funding resources. The HMAc decided to modify the prioritization of action items in this update to reflect current conditions (risk assessment), needs, and capacity (see Attachment A for more information). High priority actions are shown with orange highlight. The City will focus their attention, and resource availability, upon these achievable, high leverage, activities over the next five-years. Although this methodology provides a guide for the HMAc in terms of implementation, the HMAc has the option to implement any of the action items at any time. This option to consider all action items for implementation allows the committee to consider mitigation strategies as new opportunities arise, such as capitalizing on funding sources that could pertain to an action item that is not currently listed as the highest priority. Refer to Attachment A for changes to actions since the previous NHMP.

Table MI-1 Action Items

		Impacted Hazard									Implementation and Maintenance			
Action Item #	Statement	Drought	Earthquake	Extreme Heat	Flood	Landslide	Volcanic Event	Wildfire	Windstorm	Winter Storm	Lead/ Partners	Timeline	Potential Funding Source	Estimated Cost
1	Coordinate with Clackamas County, OEM, the American Red Cross, and other relevant agencies to identify shelter facilities within Milwaukie to ensure there are adequate shelter facilities in hazard-free zones to serve Milwaukie residents.		X	X	X	X	X	X	X	X	Emergency Management/ CERT Volunteer, CFD#1	Ongoing	General Fund, BRIC	Low
2	Increase outreach and education for hazard awareness and natural disaster preparedness, especially for low-income, elderly, non-English speaking, and other vulnerable populations.	X	X	X	X	X	X	X	X	X	Emergency Management/ Public Works, Community Services, CFD#1, CERT	Ongoing	General Fund, HMGP, BRIC	Medium
3	Maintain and enhance strategies for debris management for all hazards.		X		X	X	X	X	X	X	Public Works/ METRO	Ongoing	General Fund	Medium
4	Improve and obtain resources and equipment essential for responding to and recovering from disasters.	X	X	X	X	X	X	X	X	X	Public Works/ Emergency Management	Ongoing	General Fund, HMGP, BRIC, Seismic Rehabilitation Grant Program	High
5	Coordinate natural hazard related climate change action items through the Milwaukie Community Climate Action Plan (CAP).	X		X	X			X	X	X	Public Works/ Planning, CFD#1, EM, Community Services	Ongoing	General Fund	High
6	Evaluate alternatives for reducing the flooding hazard for properties along Kellogg Creek, Johnson Creek, Mount Scott Creek area, and the Willamette River.				X						Engineering/ Planning, Public Works	Long	General Fund, HMGP, FMA, PDM	High

		Impacted Hazard									Implementation and Maintenance			
Action Item #	Statement	Drought	Earthquake	Extreme Heat	Flood	Landslide	Volcanic Event	Wildfire	Windstorm	Winter Storm	Lead/ Partners	Timeline	Potential Funding Source	Estimated Cost
7	Bury vulnerable critical infrastructure, such as power lines, to lessen potential failures during severe weather.								X	X	Public Works / Engineering	Long	General Fund, HMGP, BRIC	High
8	Coordinate wildfire mitigation action items through the Clackamas County Community Wildfire Protection Plan.									X	Emergency Management/ Clackamas FD1, Public Works, Building, Planning	Ongoing	General Fund, HMGP, BRIC	Low

Source: Milwaukie NHMP HMAc, updated 2023

Cost: Low (less than \$50,000), Medium (\$50,000-\$100,000), High (more than \$100,000)

Timing: Ongoing (continuous), Short (1-2 years), Medium (3-5 years), Long (5 or more years)

Priority Actions: Identified with orange highlight

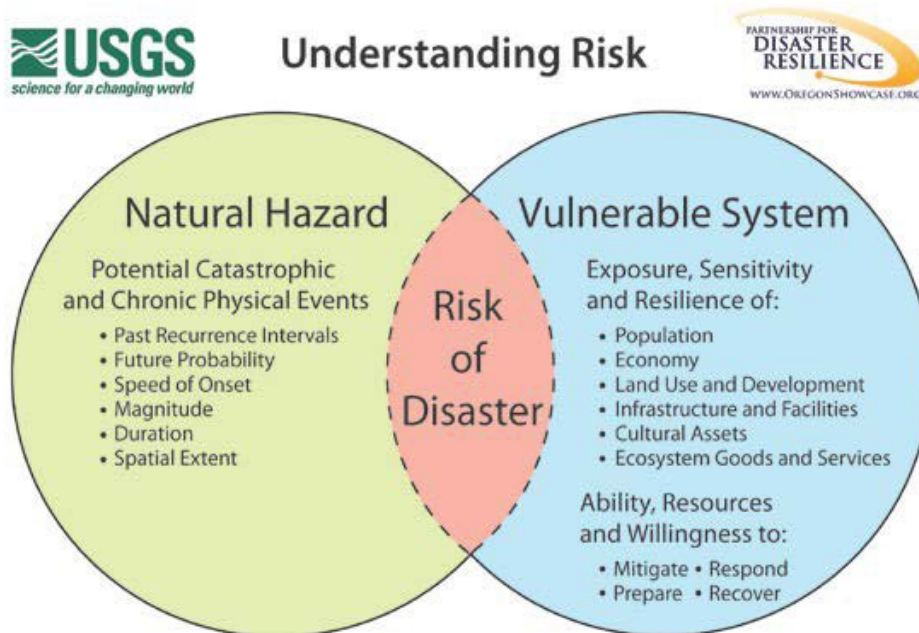
Risk Assessment

This section of the NHMP addendum addresses 44 CFR 201.6(b)(2) - Risk Assessment. In addition, this chapter can serve as the factual basis for addressing Oregon Statewide Planning Goal 7 – Areas Subject to Natural Hazards. Assessing natural hazard risk has three phases:

- **Phase 1:** Identify hazards that can impact the jurisdiction. This includes an evaluation of potential hazard impacts – type, location, extent, etc.
- **Phase 2:** Identify important community assets and system vulnerabilities. Example vulnerabilities include people, businesses, homes, roads, historic places and drinking water sources.
- **Phase 3:** Evaluate the extent to which the identified hazards overlap with or have an impact on, the important assets identified by the community.

The local level rationale for the identified mitigation strategies (action items) is presented herein and within Volume I, Section 3 and Volume III, Appendix C. The risk assessment process is graphically depicted in Figure MI-1. Ultimately, the goal of hazard mitigation is to reduce the area of risk, where hazards overlap vulnerable systems.

Figure MI-1: Understanding Risk



Source: USGS- Oregon Partnership for Disaster Resilience Research Collaboration, 2006

Hazard Analysis

The Milwaukie HMA developed their hazard vulnerability assessment (HVA), using their previous HVA and the County’s HVA as a reference. Changes from their previous HVA and the County’s HVA were made where appropriate to reflect distinctions in vulnerability and risk from natural hazards unique to Milwaukie, which are discussed throughout this addendum. Table MI-2 shows the HVA matrix for

Milwaukie listing each hazard in order of rank from high to low. For local governments, conducting the hazard analysis is a useful step in planning for hazard mitigation, response, and recovery. The method provides the jurisdiction with a sense of hazard priorities but does not predict the occurrence of a hazard. Three chronic hazards (extreme heat, wildfire, and flood) rank as the top hazard threats to the City (Top Tier). Cascadia earthquake, crustal earthquake, winter storm, drought, and windstorm comprise the next highest ranked hazards (Middle Tier), while landslide and volcanic event comprise the lowest ranked hazards (Bottom Tier).

Table MI-2 Hazard Analysis Matrix

Hazard	History	Vulnerability	Maximum Threat	Probability	Total Threat Score	Hazard Rank	Hazard Tiers
Extreme Heat Event	16	50	90	70	226	1	Top Tier
Wildfire	16	45	90	70	221	2	
Flood	10	30	80	70	190	3	
Earthquake - Cascadia	2	50	100	35	187	4	Middle Tier
Earthquake - Crustal	2	40	100	42	184	5	
Winter Storm	16	20	90	56	182	6	
Drought	16	20	70	70	176	7	
Windstorm	8	25	70	56	159	8	
Landslide	12	15	60	56	143	9	Bottom Tier
Volcanic Event	2	15	50	7	74	10	

Source: Milwaukie HMAc, 2023.

Future Climate Variability

Human-caused climate change is impacting the natural systems and environmental health of regional and local communities. The city of Milwaukie recognizes the effects that climate change will have on the city and its residents, including changes to the frequency, severity, and impacts of natural hazards from historical norms. According to the [Intergovernmental Panel on Climate Change Fourth National Climate Assessment](#), the Pacific Northwest region will see impacts to drought risk, water quality, wildfires and air quality, human health and more due to climate change. Even with these challenges, the Pacific Northwest and the city of Milwaukie will shelter a growing population seeking livability and refuge from more extreme climates in the nation.

Climate models for Oregon suggest, future regional climate changes include increases in temperature around 0.2-1°F per decade in the 21st Century, along with warmer and drier summers, and some evidence that extreme precipitation will increase in the future.² Increased droughts may occur in the Willamette Valley under various climate change scenarios because of factors, including reduced snowpack, rising temperatures, and reductions in summer precipitation. Climate models suggest that as the region warms, winter snow precipitation will likely shift to higher elevations and snowpack will be diminished as more precipitation falls as rain altering surface flows.

Acknowledging the city’s responsibility to be a leader in the climate crisis, Milwaukie adopted a [Climate Action Plan](#) detailing 53 city-led actions to mitigate and adapt to climate change. Along with reducing the city’s greenhouse gas emissions and contribution to climate change, the Climate Action Plan calls for

² Oregon Climate Change Research Institute (OCCRI), [Fourth Oregon Climate Assessment Report](#) (2019) and [Fourth National Climate Assessment, Chapter 23: Northwest](#) (2019). <http://www.occri.net/publications-and-reports/publications/>

increasing the community’s resiliency and preparedness for natural hazards through policy, advocacy, outreach, and education.

Milwaukie is committed to planning and preparing for the immediate and future threats that climate change will have on the community. By addressing the climate crisis through the actionable goals of the Climate Action Plan, Milwaukie hopes to reduce the risk and impact of climate change related natural hazards on residents of Milwaukie and the region while encouraging others to take climate action.

Community Characteristics

Table MI-3 and the following section provides information on City specific demographics and assets. Many of these community characteristics can affect how natural hazards impact communities and how communities choose to plan for natural hazard mitigation. Considering the City specific assets during the planning process can assist in identifying appropriate measures for natural hazard mitigation.

The city is located within the southern bounds of the Portland metropolitan area approximately six miles from downtown Portland. The city is within the Willamette River basin and has two major creeks flowing through it, Johnson Creek in the northern part of the city and Kellogg Creek in the south.

Milwaukie’s climate is consistent with the Marine West Coast Climate Zone, with warm summers and cool, wet winters. Milwaukie receives most of its rainfall between October and May, and averages 43 inches of rain, and less than one (1) inch of snow, per year. Elevations in the city range from 205 feet near 59th Avenue and Monroe Street to a low of 43 feet on the shores of the Willamette River. Milwaukie is characterized by flat or gently hilly topography.

Population, Housing, and Income

Milwaukie has grown substantially since its incorporation in 1903 and has an area today of about 5 square miles. Between 2016 and 2021 the City grew by 795 people (4%; as of 2022 the population is 21,305). Between 2022 and 2040 the population is forecast to grow by 9% to 23,268.

Most of the population is White/Caucasian (81%) and about 18% of the population is Hispanic or Latino. The poverty rate is 8% (7% of children under 18, 11% for people 65 and older), 6% do not have health insurance, and 53% of renters pay more than 30% of their household income on rent (34% for owners). About 38% of the population has a bachelor’s degree or higher (5% do not have a high school degree). Approximately 12% of the population lives with a disability (30% of population 65 and older), and 38% are either below 15 (21%) or over 65 (17%) years of age. About 12% of the population are 65 or older and living alone and 10% are single parents.

The City includes a diversity of land uses but is zoned primarily residential. About 73% of housing units are single-family, 26% are multifamily, and 1% are mobile homes. Over half of homes (55%) were built before 1970 and only 22% were built after 1990. Newer homes are more likely to be built to current seismic, flood, wildfire, and other hazard standards. Almost two-thirds (57%) of housing units are owner occupied, 40% are renter occupied, less than 1% are seasonal homes, and 3% are vacant.

Transportation and Infrastructure

Milwaukie is accessible by two state highways, 99E (or McLoughlin Blvd.), running north to south in the western part of the city, and Highway 224, running west to east through the central part of the city. Milwaukie is also bisected by the Union Pacific Railroad main line, which travels northwest to southeast carrying both passengers and freight.

As shown in Table MI-3 Motor vehicles represent the dominant mode of travel through and within Milwaukie. Nine percent (9%) of renters and 39% of owners do not have a vehicle. Most workers drive alone to work (69%); 7% carpool, 6% use public transit, 4% either walk or use a bicycle, and 14% work at home.

The responsibility and authority, as well as the financial capability, to maintain an adequate level of service for the highways rests with Metro and Oregon Department of Transportation (ODOT) authorities. Congestion can result in the diversion of traffic onto City streets.

The City's public transit is provided by the TriMet transit system. Nine bus routes go through the downtown Milwaukie transit center daily. The [MAX Orange Line](#) provides service to Milwaukie. The availability and quality of pedestrian and bicycling facilities (sidewalks, bike lanes, and pathways) is inconsistent but has improved substantially since the 2019 NHMP update due to an increased investment in the Safe Routes to School and Safe Access for Everyone Programs. [Base Maps](#) are found on the city's website.

Economy

Milwaukie is a major industrial center in the Portland metropolitan area containing one of the largest concentrations of warehousing and distribution facilities in the region. The Milwaukie Industrial Park, Omark Industrial Park, and the Johnson Creek industrial area comprise over 300 acres of industrial land within the city. These areas are nearing capacity and very little land within the city is currently available for new industrial development.

Milwaukie's commercial lands are largely built up. New commercial development along Highway 224, McLoughlin Boulevard, and 82nd Avenue has lured many people away from downtown Milwaukie for purchasing comparison goods such as clothes, furniture, and appliances. Downtown Milwaukie, however, has continued to attract commercial investment in the form of commercial service uses including banks, insurance, professional offices, and several residential mixed-use developments. The city has identified areas for commercial, office, or mixed use development: [map](#).

The City, school district, and smaller employers (retail, offices and other professional services) provide for most of Milwaukie's employment.

About 56% of the resident population 16 and over is in the labor force (11,892 people) and are employed in a variety of occupations including professional (25%), management, business, and financial (19%), office and administrative (13%), sales (10%), and construction, extraction, and maintenance (9%) occupations.

Most workers residing in the city (93%, 9,523 people) travel outside of the city for work primarily to Portland and surrounding areas.³ A significant population of people travel to the city for work, (95% of the workforce, 12,992 people) primarily from Portland and surrounding areas.⁴

³ U.S. Census Bureau. LEHD Origin-Destination Employment Statistics (2002-2021). Longitudinal-Employer Household Dynamics Program, accessed on December 18, 2023 at <https://onthemap.ces.census.gov>.

⁴ Ibid.

Table MI-3 Community Characteristics

Population Characteristics		Population	Household Characteristics	
		Growth		
2016 Population Estimate	20,510		Housing Units	
2022 Population Estimate	21,305	4%	Single-Family (includes duplexes)	6,935 73%
2045 Population Forecast*	23,268	9%	Multi-Family	2,507 26%
Race			Mobile Homes (includes RV, Van, etc.)	116 1%
American Indian and Alaska Native		< 1%	Household Type	
Asian		3%	Family Household	5,176 56%
Black/ African American		1%	Married couple (w/ children)	1,482 16%
Native Hawaiian and Other Pacific Islander		< 1%	Single (w/ children)	892 10%
White		81%	Living Alone 65+	1,090 12%
Some Other Race		< 1%	Year Structure Built	
Two or More Races		6%	Pre-1970	5,212 55%
Hispanic or Latino/a (of any race)			1970-1989	3,129 33%
Limited or No English Spoken	309	2%	1990-2009	1,151 12%
Vulnerable Age Groups			2010 or later	66 1%
Less than 5 Years	1,108	5%	Housing Tenure and Vacancy	
Less than 15 Years	3,264	16%	Owner-occupied	5,441 57%
65 Years and Older	3,217	15%	Renter-occupied	3,779 40%
85 Years and Older	369	2%	Seasonal	32 < 1%
Age Dependency Ratio		0.44	Vacant	306 3%
Disability Status (Percent age cohort)			Vehicles Available (Occupied Units)	
Total Disabled Population	2,618	12%	No Vehicle (owner occupied)	171 3%
Children (Under 18)	124	3%	Two+ vehicles (owner occupied)	3,824 70%
Working Age (18 to 64)	1,546	11%	No Vehicle (renter occupied)	352 9%
Seniors (65 and older)	948	30%	Two+ vehicles (renter occupied)	1,268 34%
Income Characteristics			Employment Characteristics	
Households by Income Category			Labor Force (Population 16+)	
Less than \$15,000	504	5%	In labor Force (% Total Population)	11,892 56%
\$15,000-\$29,999	754	8%	Unemployed (% Labor Force)	632 5%
\$30,000-\$44,999	1,363	15%	Occupation (Top 5) (Employed 16+)	
\$45,000-\$59,999	994	11%	Professional & Related	2,978 25%
\$60,000-\$74,999	1,090	12%	Management, Business, & Financial	2,223 19%
\$75,000-\$99,999	1,167	13%	Office & Administrative	1,585 13%
\$100,000-\$199,999	2,891	31%	Sales & Related	1,152 10%
\$200,000 or more	457	5%	Construction, Extraction, & Maint.	1,027 9%
Median Household Income			Health Insurance	
		\$73,351	No Health Insurance	1,329 6%
Gini Index of Income Inequality			Public Health Insurance	7,194 34%
		0.40	Private Health Insurance	15,210 72%
Poverty Rates (Percent age cohort)			Transportation to Work (Workers 16+)	
Total Population	1,902	9%	Drove Alone	8,126 69%
Children (Under 18)	403	10%	Carpooled	841 7%
Working Age (18 to 64)	1,159	8%	Public Transit	678 6%
Seniors (65 and older)	340	11%	Motorcycle	0 0%
Housing Cost Burden (Cost > 30% of household income)			Bicycle/Walk	416 4%
Owners with a Mortgage	1,406	34%	Work at Home	1,662 14%
Owners without a Mortgage	226	17%		
Renters	1,986	53%		

Source: U.S. Census Bureau, 2016-2021 American Community Survey; Portland State University, Population Research Center, "Annual Population Estimates", METRO 2040 Population Distributed Forecast (2021, [Exhibit A to Ordinance 21-1457](#)).

Note: ACS 5-year estimates represent average characteristics from 2012-2016 or 2017-2021. Sampling error may result in low reliability of data. This information or data is provided with the understanding that conclusions drawn from such information are the responsibility of the user. Refer to the original source documentation to better understand the data sources, results, methodologies, and limitations of each dataset presented.

Community Lifelines

This section outlines the resources, facilities, and infrastructure that, if damaged, could significantly impact the public safety, economic conditions, and environmental integrity of the city. [Community Lifelines](#) are the most fundamental services in the community that, when stabilized, enable all other aspects of society to function. Mitigating these facilities will increase the community’s resilience.

The community lifelines identified below were identified by the City of Milwaukie. This integrated network of assets, services, and capabilities are used day-to-day to support the recurring needs of the community and enable all other aspects of society to function. Decisive intervention (e.g., rapid re-establishment or employment of contingency response solutions) is required to maintain/reestablish these facilities and services following a hazard incident.

Critical Facilities

Facilities that are critical and essential to government response, and recovery activities (i.e. life, safety, property, and environmental protection). These facilities include: 911 Centers, Emergency Operations Centers, Police, and Fire Stations, Public Works facilities, sewer, and water facilities, hospitals, bridges, roads, shelters, and more. Table MI-4 includes critical facilities identified in the DOGAMI Risk Report (2024) and assumed impact from individual hazards.

Table MI-4 Critical Facilities

	Flood 1% Annual Chance	CSZ 9.0 Earthquake Moderate to Complete Damage	Canby-Molalla Fault Mw-6.8 Moderate to Complete Damage	Landslide High and Very High Susceptibility	Wildfire High or Moderate Risk
Critical Facilities by Community	Exposed	>50% Prob.	>50% Prob.	Exposed	Exposed
Ardenwald Elementary School	-	X	X	-	-
Campbell Elementary School	-	X	X	-	-
Public Safety Building (CFD #1 - Station 2)	-	X	-	-	-
Kellogg Creek WWTP	-	X	X	-	-
Lewelling Elementary School	-	X	-	-	-
Milwaukie Elementary School	-	X	X	-	-
Milwaukie High School	-	X	X	-	-
Milwaukie Public Works Campus	-	X	X	-	-
Portland Waldorf School	-	X	X	-	-
Providence Milwaukie Hospital	-	X	X	-	-
Rowe Middle School	-	X	X	-	-

Source: DOGAMI, *Multi-Hazard Risk Report for Clackamas County, Oregon* (2024), Table A-27.

Additional Critical Facilities not included in the DOGAMI Risk Report:

Facilities not in the City:

- [Town Center Station](#) (11300 SE Fuller Rd)
- [Oak Grove Station](#) (2930 SE Oak Grove Blvd)
- [Lake Road Station](#) (6600 SE Lake Rd)
- Clackamas County Sheriff’s Office (9101 SE Sunnybrook Blvd)
- Oregon State Police (8805 SE Deer Creek Ln)

Hospitals:

- Kaiser Permanente Sunnyside Hospital (10180 SE Sunnyside Rd; not in city)
- Providence Willamette Falls Medical Center (1500 Division St; not in city)

Essential Facilities

Facilities that are essential to the continued delivery of key government services, and/or that may significantly impact the public’s ability to recover from the emergency. These facilities may include: community gathering places, commercial centers, and other public facilities such as school fields.

City Buildings:

- City Hall
- Ledding Library
- Milwaukie Community Center
- Johnson Creek Blvd Campus
- Public Safety Building

County Buildings:

- Kellogg Treatment Plant

Schools:

- Ardenwald Elementary
- Clackamas Community College (Harmony Road Campus)
- Linwood Elementary
- Milwaukie Elementary/ El Puente
- Milwaukie High School
- Portland Waldorf School (private)
- Rowe Middle School
- Seth Lewelling Elementary
- St. John the Baptist School (private)
- School Transportation Center (not in city)
- Wichita Center (not in city)

Potential Red Cross Shelter Sites:

- Milwaukie Community Center (5440 SE Kellogg Creek Dr)
- Milwaukie Presbyterian Church (2416 SE Lake Rd)
- Clackamas Park Friends Church (8120 SE Thiessen Rd, Oak Grove)
- King of Kings Lutheran Church (5501 SE Thiessen Rd, Oak Grove)
- New Hope Church (5197 SE King Rd, Milwaukie)
- Grace Pointe Church (10750 SE 42nd Ave)
- Oddfellows Hall (10282 SE Main St)
- Schools throughout Milwaukie

Essential Infrastructure

Infrastructure that provides necessary services for emergency response include:

Bridges:Clackamas County:

- 55th Ave across Johnson Creek
- 60th Ave across Johnson Creek
- Linwood Ave across Johnson Creek
- Milport Rd across Johnson Creek
- Oatfield Rd across Kellogg Creek
- Rusk Rd across Mount Scott Creek

Portland:

- Johnson Creek Blvd. across Johnson Creek
- Ochoco St across Johnson Creek

TriMet (rail):

- Rail across Highway 99E
- Rail across Kellogg Creek
- Rail crossing north of Mailwell Dr

State of Oregon:

- 17th Ave across Johnson Creek
- McLoughlin Blvd. across Johnson Creek N. of city
- McLoughlin Blvd. across Kellogg Creek
- McLoughlin off-ramp to Hwy 224 across Johnson Creek
- Hwy 224 across Johnson Creek, McLoughlin Blvd. & Main
- Hwy 224 across railroad tracks and 26th Ave
- Hwy 224 across Mount Scott Creek
- Hwy 224 across MAX Light Rail Orange Line tracks

City of Milwaukie:

- Kellogg Creek near Milwaukie Bay Park
- Wichita Ave across Johnson Creek
- Stanley Ave across Johnson Creek
- 55th Ave across Johnson Creek

Transportation Corridors:

- 17th Ave
- 32nd Ave
- 55th Ave
- Harrison St/42nd Ave/King Rd.
- Highway 224
- Johnson Creek Blvd
- King Rd
- Lake Rd
- Linwood Ave
- Max Orange Line
- McLoughlin Blvd/Highway 99E
- Oatfield Rd
- River Rd

Water Treatment Facilities:

- 8 City Wells
- Aeration Packed Towers – 5 total at two locations
- Concrete Storage Tank – 40th Ave & Harvey St
- Elevated Water Storage Tank – 40th Ave & Harvey St
- Ground Level Metal Tank – Stanley Ave & Harlow St
- Sewerage Pump Stations – 5

Other Utilities:

- NW Natural pipelines
- PGE Substations (One is at edge of Lake Rd / Harmony Rd; a second is on the East end of Johnson Creek; a third is on the border between Milwaukie and Oak Grove)

Environmental Assets

Environmental assets are those parks, green spaces, wetlands, and rivers that provide an aesthetic and functional ecosystem service for the community include:

City-owned Parks:

- Ball-Michel Park
- Dogwood Park
- Homewood Park
- North Clackamas Park
- Milwaukie Bay Park
- Stanley Park
- Water Tower Park
- Spring Park
- Wichita Park
- Scott Park
- Balfour Park
- Bowman Brae Park

City-managed greenspaces and green infrastructure:

- Stormwater detention facilities
- Public bioswales and raingardens
- Elk Rock Island
- Minthorn Wetlands (partial ownership)
- Willow Place Natural Area
- Public street trees

Waterways and Willamette Tributaries

- Johnson Creek
- Kellogg creek
- Spring Creek

Vulnerable Populations

Vulnerable populations, including seniors, disabled citizens, women, and children, as well those people living in poverty, often experience the impacts of natural hazards and disasters more acutely. Populations that have special needs or require special consideration include:

- Behavioral Health Facility (9200 SE McBrod Ave)
- Hillside Manor (2889 SE Hillside Ct)
- Johnson Creek Treatment Facility (2808 SE Balfour St)
- Prestige Post-Acute and Rehab Center (12045 SE Stanley Ave)
- Royal Marc Retirement Residence (5555 SE King Rd)
- Annie Ross House (transitional family housing; 2316 SE Willard St)
- Milwaukie Community Center (daytime programs; 5440 SE Kellogg Creek Dr)
- ElderPlace Providence (daytime programs, Providence Milwaukie; 10330 SE 32nd Ave)
- Retirement Community near North Clackamas Park (5801 SE Kellogg Creek Dr)
- Deerfield Village (5770 SE Kellogg Creek Dr, not in city)

Hazardous Materials

Facilities that, if damaged, could cause serious secondary impacts may also be considered “critical.” Hazardous materials sites are particularly vulnerable to earthquake, landslide, volcanic event, wildfire, and winter storm hazards. A hazardous material facility is one example of this type of critical facility. Those sites that store, manufacture, or use potentially hazardous materials include:

- Johnson Creek Blvd (numerous businesses along the road)
- North Milwaukie Industrial Area

- Milwaukie Business Industrial Area
- Kellogg Treatment Plant
- Precision Cast Parks

Economic Assets/Population Centers

Economic assets include businesses that employ large numbers of people and provide an economic resource to the City of Milwaukie. If damaged, the loss of these economic assets could significantly affect economic stability, and prosperity. Population Centers usually are aligned with economic centers, and are a concern during evacuation/notification during a hazard event. These assets include: Downtown, McLoughlin Commercial Areas, and North Milwaukie Industrial Area.

Cultural and Historic Assets

The cultural and historic heritage of a community is more than just tourist charm. For families that have lived in the city for generations and new resident alike, it is the unique places, stories, and annual events that makes the community an appealing place to live. The cultural and historic assets are both intangible benefits and obvious quality-of-life- enhancing amenities. Because of their role in defining and supporting the community, protecting these resources from the impact of disasters is important.

Historic Inventory: (see [State Historic Preservation Office](#) for more information)

- | | | |
|--------------------------|--------------|----------------|
| • Over 500 houses | • 3 schools | • 1 city hall |
| • 5 commercial buildings | • 1 cemetery | • 1 waterworks |
| | • 1 church | |

Community Attractions:

- | | |
|--|-----------------------------------|
| • 17 th Avenue Bike/Pedestrian Path | • Milwaukie Farmers Market |
| • Bob’s Red Mill | • Milwaukie Museum |
| • Carefree Sunday | • Sara Hite Memorial Rose Garden |
| • Dark Horse Comics Corporate Headquarters | • Spring Park and Elk Rock Island |
| • First Friday (June-October) | • Springwater Trail |
| • Milwaukie Art and Artisan Market | • Trolley Trail |
| • Milwaukie Bay Park | • Umbrella Parade |
| | • Winter Solstice Event |

Hazard Characteristics

Drought

The HMAC determined that the City’s probability for drought is **high** and that their vulnerability to drought is **moderate**. *These ratings both increased from the previous NHMP addendum due to a combination of a different understanding of the most severe possible effects of drought and an increasingly unstable climate.*

Volume I, Section 2 describes the characteristics of drought hazards, history, as well as the location, extent, and probability of a potential event. Due to the climate of Clackamas County, past and present weather conditions have shown an increasing potential for drought.

The City of Milwaukie currently obtains its potable water from the Troutdale Aquifer through eight operating wells located throughout the city. Interties to the City of Portland and Clackamas River Water systems are maintained for emergency water supplies. The network of three water reservoirs provides a storage volume of six million gallons. The [Water System Master Plan](#) was last updated in 2021 to provide long-term guidance for the development of the city’s water system. It is a supporting document for the Comprehensive Plan. The document also includes recommended capital improvement projects and a map documenting the water infrastructure placement within the city.

Vulnerability Assessment

Due to insufficient data and resources, Milwaukie is currently unable to perform a quantitative risk assessment, or exposure analysis, for this hazard.

Future Projections

According to the Oregon Climate Change Research Institute “Future Climate Projections, Clackamas County,”⁵ drought, as represented by low summer soil moisture, low spring snowpack, low summer runoff, and low summer precipitation, is projected to become more frequent in Clackamas County by the 2050s.

Increasingly frequent droughts will have economic and social impacts upon those who depend upon predictable growing periods (ranches, farms, vineyards, gardeners) as well as upon the price and availability of fresh vegetables. It may also stress local jurisdiction’s ability to provide water for irrigation or commercial and household use.

Mitigation Activities

Milwaukie has a public awareness action item that can be used to address drought education. The existing drought hazard mitigation activities are conducted at the county, regional, state, and federal levels and are described in the Clackamas County NHMP.

Earthquake (Cascadia Subduction Zone)

The HMAC determined that the City’s probability for a Cascadia Subduction Zone (CSZ) earthquake is **moderate** and that their vulnerability to a CSZ earthquake is **high**. *These ratings did not change since the previous version of this NHMP.*

Volume I, Section 2 describes the characteristics of earthquake hazards, history, as well as the location, extent, and probability of a potential event. Generally, an event that affects the County is likely to affect

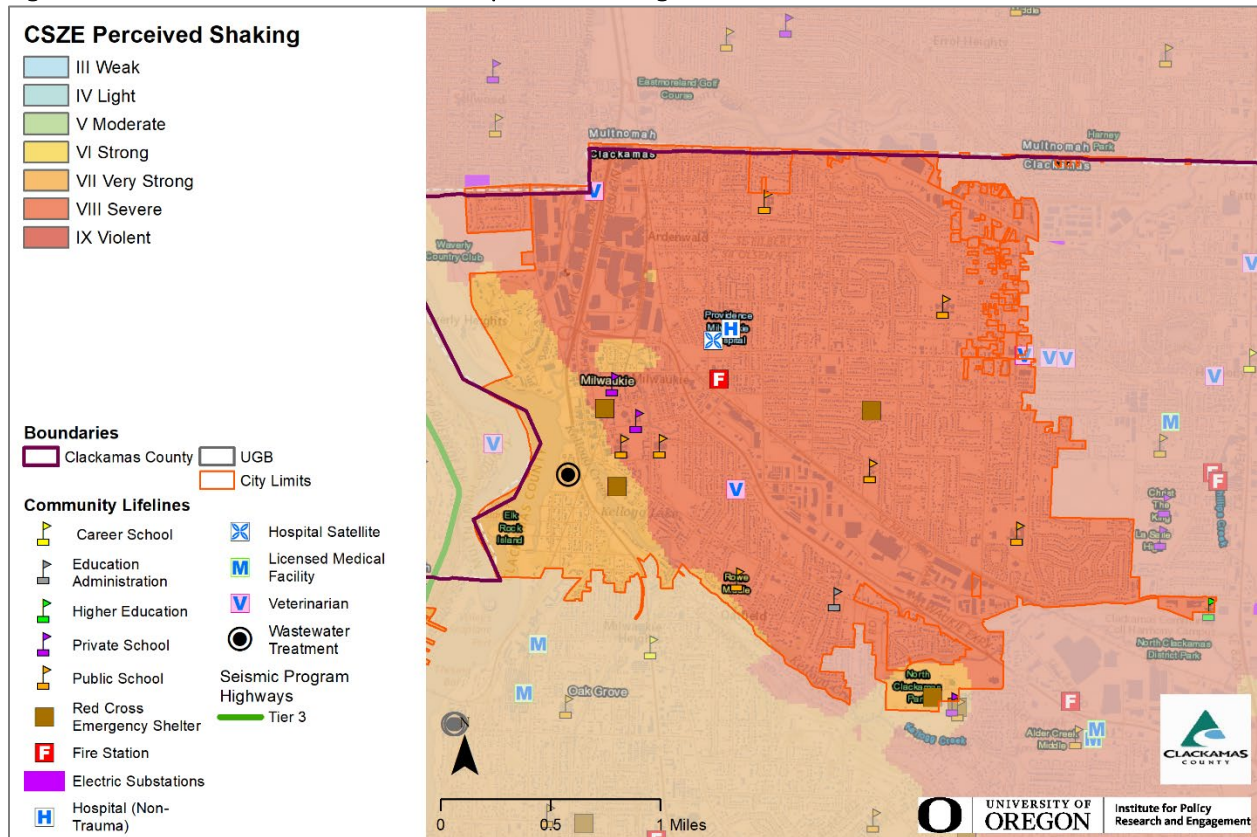
⁵ Oregon Climate Change Research Institute, *Future Climate Projections, Clackamas County, Oregon*. February 2023.

Milwaukie as well. The causes and characteristics of an earthquake event are appropriately described within Volume I, Section 2 as well as the location and extent of potential hazards. Previous occurrences are well documented within Volume I, Section 2 and the community impacts described by the County would generally be the same for Milwaukie as well.

Within the Northern Willamette Valley/Portland Metro Region, three potential faults and/or zones can generate high-magnitude earthquakes. These include the Cascadia Subduction Zone, Gales Creek-Newberg-Mt Angel Structural Zone, Portland Hills Fault Zone, and the Canby-Milwaukie Fault Zone (discussed in the crustal earthquake section).

Figure MI-2 displays relative shaking hazards from a Cascadia Subduction Zone earthquake event. As shown in the figure, most of the city is expected to experience very strong shaking (orange), while areas around the city will experience severe shaking (light red) (shown by the red northeast corner) in a CSZ event.

Figure MI-2 Cascadia Subduction Zone Expected Shaking



Cascadia Subduction Zone

The Cascadia Subduction Zone is a 680-mile-long zone of active tectonic convergence where oceanic crust of the Juan de Fuca Plate is subducting beneath the North American continent at a rate of 4 cm per year. Scientists have found evidence that 11 large, tsunami-producing earthquakes have occurred off the Pacific Northwest coast in the past 6,000 years. These earthquakes took place roughly between 300 and

5,400 years ago with an average occurrence interval of about 510 years. The most recent of these large earthquakes took place in approximately 1700 A.D.⁶

The city's proximity to the Cascadia Subduction Zone, potential slope instability, and the prevalence of certain soils subject to liquefaction and amplification combine to give the city a high-risk profile. Due to the expected pattern of damage resulting from a CSZ event, the Oregon Resilience Plan divides the State into four distinct zones and places the city predominately within the "Valley Zone" (Valley Zone, from the summit of the Coast Range to the summit of the Cascades). Within the Northwest Oregon region, damage and shaking is expected to be strong and widespread - an event will be disruptive to daily life and commerce and the main priority is expected to be restoring services to business and residents.

Earthquake (Crustal)

The HMAC determined that the City's probability for a crustal earthquake is **moderate** and that their vulnerability to crustal earthquake is **high**. *The probability rating increased while the vulnerability rating did not change since the previous version of this NHMP addendum due to an improved understanding of the likelihood of a crustal earthquake.*

Volume I, Section 2 describes the causes and characteristics of earthquake hazards, history, as well as the location, extent, and probability of a potential event. Generally, an event that affects the County is likely to affect Milwaukie as well. Figure MI-3 shows a generalized geologic map of the Milwaukie area that includes the areas for potential regional active faults, earthquake history (1971-2008), and soft soils (liquefaction) hazard. The figure shows the areas of greatest concern within the City limits as red and orange.

There are two potential crustal faults and/or zones near the city that can generate high-magnitude earthquakes. These are the Gales Creek-Mt. Angel Structural Zone and Portland Hills Fault Zone (discussed in greater detail below). Other faults include the Oatfield fault (just to the east of the city on the eastern side of the Willamette River), the Damascus-Tickle Creek fault, also to the east of the city, and the Mt. Hood Fault in eastern Clackamas County. Historical records count over 56 earthquakes in the Portland-metro area. The more severe ones occurred in 1877, 1880, 1953 and 1962. The most recent severe earthquake was the March 25, 1993, Scotts Mills quake. It was a 5.6 magnitude quake with aftershocks continuing at least through April 8.

Canby-Molalla Fault Zone

The Canby-Molalla Fault Zone is a series of NE-trending fault that vertically displace the Columbia River Basalt with discontinuous aeromagnetic anomalies that represent significant offset of Eocene basement and volcanic rocks. The fault zone extends for 31 miles from the vicinity of Tigard south through the towns of Canby and Milwaukie in northern Oregon.

Portland Hills Fault Zone

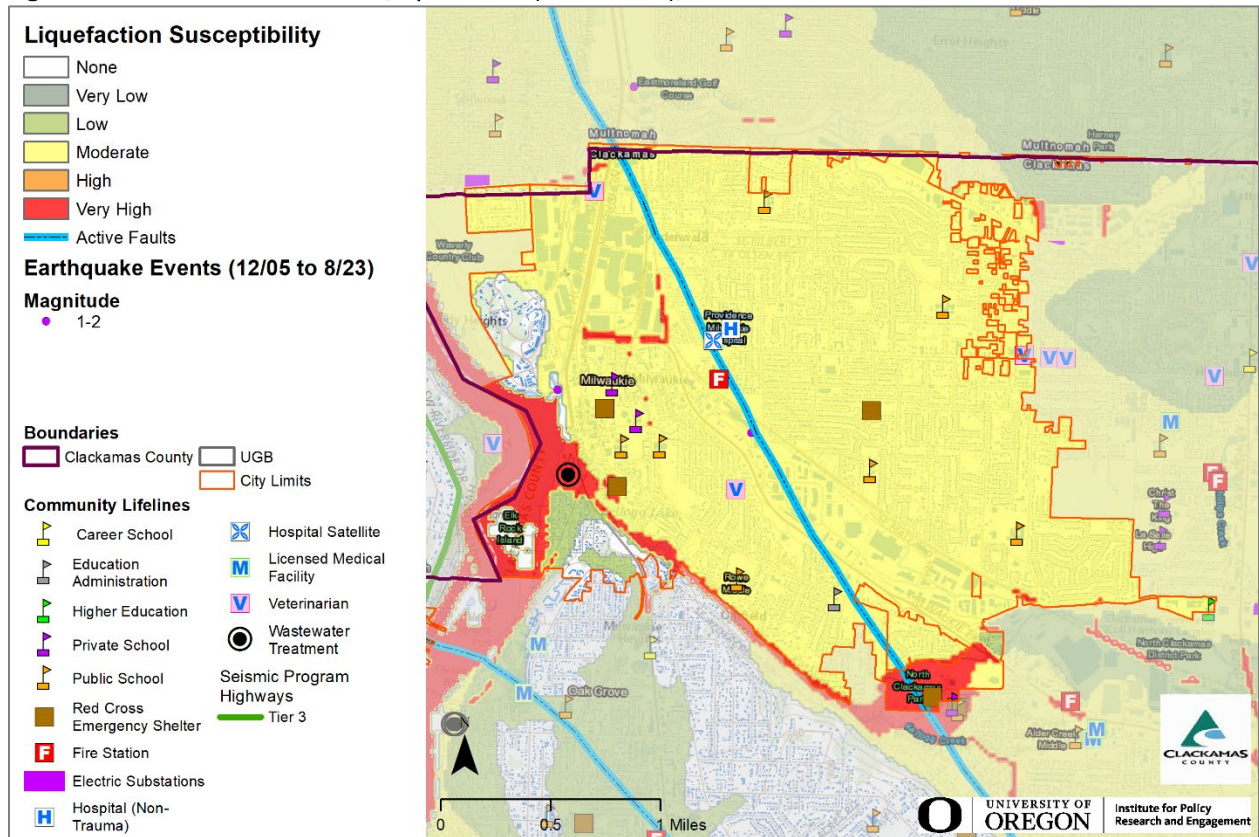
The Portland Hills Fault Zone is a series of NW-trending faults that vertically displace the Columbia River Basalt by 1,130 feet and appear to control thickness changes in late Pleistocene (approx. 780,000 years ago) sediment. The fault zone extends along the eastern margin of the Portland Hills for 25 miles and runs through the western side of Milwaukie.

Earthquake-induced damages are difficult to predict, and depend on the size, type, and location of the earthquake, as well as site-specific building, and soil characteristics. Presently, it is not possible to

⁶ The Cascadia Region Earthquake Workgroup, 2005. Cascadia Subduction Zone Earthquakes: A magnitude 9.0 earthquake scenario. <http://www.crew.org/PDFs/CREWSubductionZoneSmall.pdf>

accurately forecast the location or size of earthquakes, but it is possible to predict the behavior of soil at any site. In many major earthquakes, damages have primarily been caused by the behavior of the soil.

Figure MI-3 Active Crustal Faults, Epicenters (1971-2008), and Soft Soils



Vulnerability Assessment

The city completed an analysis, using the best available data, as a component of the vulnerability assessment in 2009, updated in 2012, and reviewed and updated, as appropriate, in 2018 and 2023. This analysis looked at identified hazard areas in conjunction with available data on property exposed to the hazard. Exposure of community assets to natural hazards was determined by manually comparing community assets with each hazard and identifying where assets and hazards intersected. Additionally, in 2018 the Department of Geology and Mineral Industries (DOGAMI) completed a regional impact analysis for earthquakes originating from the Cascadia Subduction Zone and Portland Hills faults (O-18-02). Findings from that report are provided at the end of the crustal earthquakes hazard section.

Community assets located in the highest hazard zone for earthquakes include the Public Safety Building (Milwaukie Police Department and Clackamas Fire District Station 2), Providence Milwaukie Hospital, and the Milwaukie Business Industrial Area. Milwaukie’s infrastructure is particularly vulnerable to earthquake damage, especially Highway 224, Highway 99E, and the crossings of Johnson Creek. Of the city’s eight wells, two of them are along the fault line, with others in the moderate to high hazard zones for earthquakes. During a major earthquake, emergency responders may have difficulty performing their duties because their buildings could be impacted by the event. The Public Safety Building is in the moderate to high hazard zones. Areas near the Willamette River and various creeks around Milwaukie are

likely composed of softer soils prone to liquefaction. This can be very destructive to underground utilities such as water and sewer lines. Buildings and water lines can sink into the liquefied ground while sewer pipes, manholes and pump stations (assets partially filled with air) may float to the surface. After the earthquake, the liquefied soil will re-solidify, locking tilted buildings and broken pipe connections into place.

Vulnerable populations, including children, could be significantly impacted, as many schools lie in the highest two hazard zones. The data gathered from the statewide DOGAMI inventory should be used to prioritize school buildings in Milwaukie for seismic hazard retrofitting.

Seismic building codes were implemented in Oregon in the 1970s; however, stricter standards did not take effect until 1991 and early 2000s. As noted in the community profile, approximately 36% of residential buildings were built prior to 1990, which increases the City's vulnerability to the earthquake hazard. Information on specific public buildings' (schools and public safety) estimated seismic resistance, determined by DOGAMI in 2007, is shown in Table MI-5; each "X" represents one building within that ranking category. Of the facilities evaluated by DOGAMI using their Rapid Visual Survey (RVS), zero (0) have a very high (100% chance) collapse potential and zero (0) have a high (greater than 10% chance) collapse potential. *Note: two schools, Ardenwald Elementary and Milwaukie High School, have been rebuilt since the 2007 DOGAMI study.*

In addition to building damages, utility (electric power, water, wastewater, natural gas) and transportation systems (bridges, pipelines) are also likely to experience significant damage. There is a low probability that a major earthquake will result in failure of upstream dams.

Utility systems will be significantly damaged, including damaged buildings and damage to utility infrastructure, including water treatment plants and equipment at high voltage substations (especially 230 kV or higher which are more vulnerable than lower voltage substations). Buried pipe systems will suffer extensive damage with approximately one break per mile in soft soil areas. There would be a much lower rate of pipe breaks in other areas. Restoration of utility services will require substantial mutual aid from utilities outside of the affected area.

Mitigation Activities

Milwaukie has taken mitigation steps to reduce the city's vulnerability in earthquake events. Additional mitigation activities completed by the City of Milwaukie include:

- Compliance with SB 13, enacted in 2001, requiring local governments to develop seismic preparation procedures, inform their employees about the procedures, and conduct earthquake drills.
- Conformance with seismic-related construction requirements in the Oregon Structural Specialty Code and Oregon One- and Two-Family Dwelling Specialty Code.
- Adoption of a policy to require undergrounding of power lines in new subdivisions.
- Development Code restrictions regarding construction on steep slopes.
- The following buildings have been constructed to be earthquake safe:
 - Water tower at 40th Ave and Harvey St, Milwaukie High School Fine Arts Center, and Linwood Elementary Media Center and Gym.
 - Ardenwald Elementary rebuilt per 2008 bond passed by voters (former building demolished in 2009).
 - Milwaukie High School Main building rebuilt in 2021.

Table MI-5 Rapid Visual Survey Scores

Facility	Site ID*	Level of Collapse Potential			
		Low (<1%)	Moderate (>1%)	High (>10%)	Very High (100%)
Schools					
Alder Creek Middle (13801 SE Webster Rd)	Clac_sch83	X			
Ardenwald Elementary (8950 SE 36th Ave)	Clac_sch14	Retrofitted ca. 2010 per a 2008 bond.			
Hector Campbell Elementary (11326 SE 47th Ave) - CLOSED	Clac_sch87		X	X	
Linwood Elementary (11909 SE Linwood Ave)	Clac_sch19	X			X
Milwaukie Elementary School (11250 SE 27th Ave)	Clac_sch20			X	X
Milwaukie High School (2301 SE Willard St)	-	Rebuilt ca. 2021 per a 2016 bond.			
Portland Waldorf School (2300 SE Harrison St)	-	2007 RVS report did not include structural appendix for this facility.			
Seth Lewelling Elementary (5325 SE Logus Rd)	Clac_sch88	X			
St. John Catholic School (10956 SE 25th Ave)	-	2007 RVS report did not include structural appendix for this facility.			
Fire Facilities					
<u>CFD Fire Station 1</u> (ca. 1983) (11300 SE Fuller Rd)	Clac_fir09	X			
<u>CFD Fire Station 2</u> (ca. 1993) (Public Safety Building) (3200 SE Harrison)	Clac_fir26	X			
<u>CFD Fire Station 3</u> (ca. 1997) (2930 SE Oak Grove Blvd)	Clac_fir27	X			
<u>CFD Fire Station 4</u> (ca. 1999) (6600 SE Lake Rd)	Clac_fir08	X			
Hospital					
Providence Milwaukie (10150 SE 32nd Ave)	Clac_hos02	X			

Source: [DOGAMI 2007. Open File Report 0-07-02. Statewide Seismic Needs Assessment Using Rapid Visual Assessment.](#)

“*” – Site ID is referenced on the [RVS Clackamas County Map](#)

Earthquake Regional Impact Analysis

In 2018 DOGAMI completed a regional impact analysis for earthquakes originating from the Cascadia Subduction Zone and Portland Hills faults ([O-18-02](#)). Their study focused on damage to buildings, and the people that occupy them, and on two key infrastructure sectors: electric power transmission and

emergency transportation routes. Each earthquake was studied with wet and dry soil conditions and for events that occur during the daytime (2 PM) and nighttime (2 AM). Impacts to buildings and people were tabulated at the county, jurisdictional (city), and neighborhood unit level. Estimated damage varied widely across the study area depending on local geology, soil moisture conditions, type of building, and distance from the studied faults. In general, damage from the Cascadia Subduction Zone scenario was greater in the western portion of the study area, however, damage could still be significant in some areas east of the Willamette River. The report found that damage to high-value commercial and industrial buildings was high since many of these facilities are in areas of high to very high liquefaction hazard. Casualties were higher during the daytime scenario (generally double) since more people would be at work and occupying non-wood structures that fare worse in an earthquake.

The Portland Hills fault scenario created greater damages than the Cascade Subduction Zone scenario due primarily to its placement relative to population centers and regional assets; however, at distances 15 or more miles from the Portland Hills fault the damages from the Cascadia Subduction Zone scenario generally were higher. In both the Cascadia Subduction Zone and Portland Hills Fault scenarios it is forecasted that emergency transportation routes will be fragmented, affecting the distribution of goods and services, conditions are worse under the Portland Hills Fault scenario. Portions of the electric distribution system are also expected to be impacted under both scenarios; however, the impact is considerably less than it is to the transportation routes. Additional capacity or redundancy within the electric distribution network may be beneficial in select areas that are likely to have greater impacts.

Table MI-6 shows the permanent resident population that are vulnerable to injury or death (casualty) and the buildings in the City that are susceptible to liquefaction and landslides, it does not predict that damage will occur in specific areas due to either liquefaction or landslide. More population and property are exposed to higher degrees of expected damage or casualty under the Portland Hills Fault “wet” scenario than in any other scenario.

Table MI-6 Expected damages and casualties for the CSZ fault and Portland Hills fault: earthquake, soil moisture, and event time scenarios

	Cascadia Subduction Zone (M9.0)		Portland Hills Fault (M6.8)	
	"Dry" Soil	"Wet" Saturated Soil	"Dry" Soil	"Wet" Saturated Soil
Number of Buildings	7,891	7,891	7,891	7,891
Building Value (\$ Million)	2,890	2,890	2,890	2,890
Building Repair Cost (\$ Million)	295	394	1,341	1,598
Building Loss Ratio	10%	14%	46%	55%
Debris (Thousands of Tons)	162	193	542	615
Long-Term Displaced Population	93	83	2,459	5,456
Total Casualties (Daytime)	294	380	1,427	1,595
Level 4 (Killed)	14	19	82	89
Total Casualties (Nighttime)	34	92	326	546
Level 4 (Killed)	1	3	10	16

Source: DOGAMI, Earthquake regional impact analysis for Clackamas, Multnomah, and Washington Counties, Oregon (2018, O-18-02), Tables 12-8, 12-9, 12-10, and 12-11.

Cascadia Subduction Zone Scenario

The City of Milwaukie is expected to have a 10% building loss ratio with a repair cost of \$295 million under the CSZ “dry” scenario, and a 14% building loss ratio with a repair cost of \$394 million under the

CSZ “wet” scenario.⁷ The city is expected to have around 294 daytime or 34 nighttime casualties during the CSZ “dry” scenario and 380 daytime or 92 nighttime casualties during the CSZ “wet” scenario. It is expected that there will be a long-term displaced population of around 93 for the CSZ “dry” scenario and 83 for the CSZ “wet” scenario.⁸

Portland Hills Fault Scenario

The City of Milwaukie is expected to have a 46% building loss ratio with a repair cost of \$1.341 billion under the CSZ “dry” scenario, and a 55% building loss ratio with a repair cost of \$1.598 billion under the CSZ “wet” scenario.⁹ The long-term displaced population and casualties are greatly increased for all the Portland Hills Fault scenarios. The city is expected to have around 1,427 daytime or 326 nighttime casualties during the Portland Hills Fault “dry” scenario and 1,595 daytime or 546 nighttime casualties during the Portland Hills Fault “wet” scenario. It is expected that there will be a long-term displaced population of around 2,459 for the Portland Hills Fault “dry” scenario and 5,456 for the Portland Hills Fault “wet” scenario.¹⁰

Recommendations from the report included topics within Planning, Recovery, Resiliency: Buildings, Resiliency: Infrastructure Improvements, Resiliency: Essential and Critical Facilities, Enhanced Emergency Management Tools, Database Improvements, Public Awareness, and Future Reports. The recommendations of this study are largely incorporated within this NHMPs mitigation strategies (Table MA-1 and Volume I, Section 3). For more detailed information on the report, the damage estimates, and the recommendations see: *Earthquake regional impact analysis for Clackamas, Multnomah, and Washington Counties, Oregon* (2018, [O-18-02](#)).

Natural Hazard Risk Report for Clackamas County

The **Risk Report (DOGAMI, 2024)**¹¹ provides hazard analysis summary tables that identify populations and property countywide that are vulnerable to the earthquake hazard. According to the Risk Report the following population and property within the study area may be impacted by the profiled events:

Cascadia Subduction Zone event (M9.0 Deterministic): 1,045 buildings, and (11 critical facilities), are expected to be damaged for a total potential loss of \$1.09 billion (a loss ratio of about 30%). About 1,115 residents may be displaced (about 5% of the population).

Crustal event (Canby-Molalla fault M6.8 Deterministic): 745 building are expected to be damaged (9 critical facilities), for a total potential loss of \$471 million (a loss ratio of about 13%). About 558 residents may be displaced (about 3% of the population).

Future Projections

Future development (residential, commercial, or industrial) within Clackamas County will be at risk to earthquake impacts, although this risk can be mitigated by the adoption and enforcement of high development and building standards. Reducing risks to vulnerable populations should be considered during the redevelopment of existing properties.

⁷ DOGAMI, *Earthquake regional impact analysis for Clackamas, Multnomah, and Washington Counties, Oregon* (2018, O-18-02), Tables 12-8 and 12-9.

⁸ Ibid, Tables 12-8 and 12-9.

⁹ Ibid, Tables 12-10 and 12-11

¹⁰ Ibid, Tables 12-10 and 12-11.

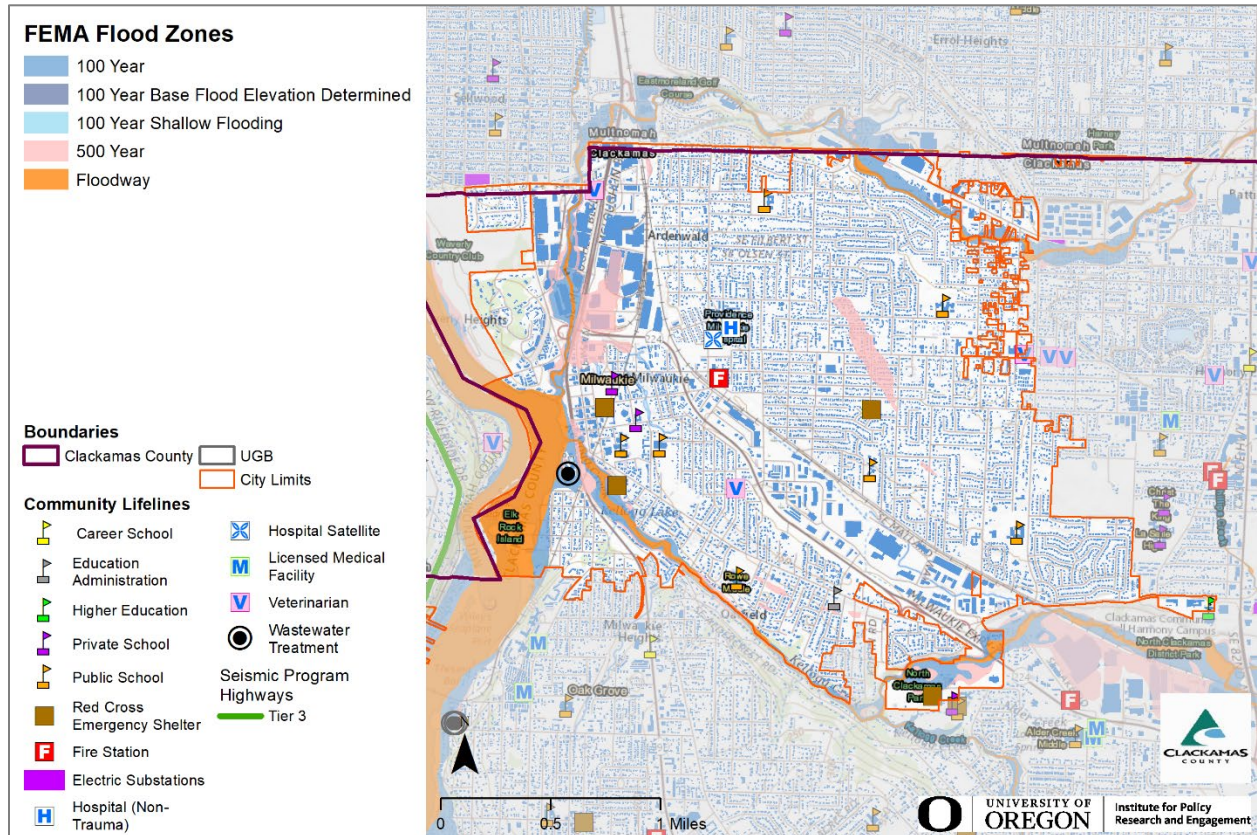
¹¹ DOGAMI, *Multi-Hazard Risk Report for Clackamas County, Oregon* (2024), Table A-26.

Flood

The HMAC determined that the City’s probability of flooding is **high** and that their vulnerability to flooding is **moderate**. *The probability rating did not change, while the vulnerability rating decreased since the previous version of this NHMP addendum due to progress made in infrastructure retrofitting and other mitigation actions.*

Volume I, Section 2 describes the characteristics of flood hazards, history, as well as the location, extent, and probability of a potential event. Figure MI-4 illustrates the flood hazard area for Milwaukie.

Figure MI-4 FEMA Flood Zones



Source: Map created by Oregon Partnership for Disaster Resilience.

Data: Oregon Department of Geology and Mineral Industries. Preparedness Framework Implementation Team (IRIS v3).

Note: To view hazard detail click this [link](#) to access Oregon HazVu

Portions of Milwaukie have areas of floodplain (special flood hazard areas, SFHA). These include Johnson Creek, Kellogg Creek, Mount Scott Creek, Minthorn Creek, Spring Creek, and the Willamette River. The Federal Emergency Management Agency (FEMA) regulatory floodplains for each of these rivers are depicted as relatively narrow areas on each side of the channels. On the Willamette River, the floodway is generally confined within high stream banks. The FEMA 100-year map shows that approximately 1.3 miles of the transportation network could be affected in a flood.

More information on stormwater infrastructure and floodplain and runoff capacity planning can be found in the Milwaukie Stormwater System Plan.

The largest flooding event to affect Milwaukie was the February 1996 flood. The high-water level meant tributaries could not drain into the Tualatin and Willamette River, which led to localized flooding on several backed-up creeks.

The extent of flooding hazards in Milwaukie primarily depends on climate and precipitation levels. Additionally, withdrawals for irrigation and drinking water, as well as stream and wetland modifications or vegetation removal can influence water flow.

Vulnerability Assessment

The City completed an analysis, using the best available data, as a component of the vulnerability assessment in 2009, updated in 2012, and reviewed and updated, as appropriate, in 2018 and 2023. This analysis looked at identified hazard areas in conjunction with available data on property exposed to the hazard. Exposure of community assets to natural hazards was determined by manually comparing community assets with each hazard and identifying where assets and hazards intersected.

The areas around Johnson Creek (impacts industrial area), Kellogg Creek, Mount Scott Creek (impacts North Clackamas Park, Senior Center, and multiple residences north of Highway 224 and south of Lake Road), and Willamette River are particularly vulnerable to flooding. Additionally, proposed lots on 19th Avenue may be vulnerable to Willamette River flooding. Johnson Creek runs through the Downtown Mixed Use and North Milwaukie Employment zones. Kellogg Creek mostly affects residential areas in the chance of flooding. The downtown area is located near the Willamette River due to the historic use of the river for economic reasons.

Additionally, a great deal of infrastructure (bridges, water lines, sewage pump stations, etc.) is in the floodplain. Infrastructure exposed to flooding includes, but is not limited to, Highway 224, SE Lake Rd, SE McLoughlin Blvd, and the north industrial park. Highway 99 is adjacent to the river, but approximately 50-70 feet above flood stage. Disruption to this infrastructure could result in transportation issues, power outages, sewage back-up, and affect overall community and environmental health.

Floods can have a devastating impact on almost every aspect of the community, including private property damage, public infrastructure damage, and economic loss from business interruption. It is important for the City to be aware of flooding impacts and assess its level of risk.

The economic losses due to business closures often total more than the initial property losses that result from flood events. Business owners, and their employees are significantly impacted by flood events. Direct damages from flooding are the most common impacts, but indirect damages, such as diminished clientele, can be just as debilitating to a business.

For mitigation planning purposes, it is important to recognize that flood risk for a community is not limited only to areas of mapped floodplains. As an urban city, Milwaukie is predominantly covered in impermeable surfaces like roads and buildings, impacting historical watershed hydrology and altering the amount and speed of stormwater runoff as sheet flow. With more frequent and intense storms caused by climate change, flash flooding events can produce volumes of surface water which can quickly exceed the capacity of the city's stormwater infrastructure. These events lead to an overflowing of piped stormwater facilities during high flow, as well as scouring, erosion, overflow flooding, and vegetation decline and/or death at facilities like detention ponds and rain gardens, along with the numerous small creeks, streams, ponds, and other waterbodies crossing Milwaukie's landscape. Resulting damage from these events can be extremely costly in both labor and materials, and can compromise both gray and green infrastructure. This in turn reduces the functionality of these systems for protecting water quality, jeopardizing the city's ability to meet state and federal water quality mitigation requirements.

The speed of onset, lack of warning, and depth of flooding make dam failures a potentially deadly, albeit unlikely, occurrence. There are four major dams upstream of Milwaukie on the Clackamas River: North Fork, Faraday, River Mill and Timothy. These are operated by Portland General Electric and are subject to the dam safety and warning requirements of the Federal Energy Regulatory Commission. According to the

Clackamas County Emergency Operations Plan, areas of Milwaukie bordering on the Willamette in the vicinity of its confluence with the Clackamas would be inundated by a wall of water 60 - 80 feet high in approximately an hour and a half should the North Fork dam fail under a “probable maximum flood” (a worst-case scenario where all four dams fail). In December 2015 Milwaukie had to evacuate approximately 50 people from their homes as Mount Scott and Johnson Creek overflowed.

The largest flooding event to affect Milwaukie was the February 1996 flood. The high-water level meant tributaries could not drain into the Tualatin and Willamette River, which led to localized flooding on several backed-up creeks.

Natural Hazard Risk Report for Clackamas County

The **Risk Report (DOGAMI, 2024)**¹² provides hazard analysis summary tables that identify populations and property countywide that are vulnerable to the flood hazard.

According to the Risk Report 20 buildings (0 critical facilities) could be damaged for a total potential loss of \$6.1 million (a building loss ratio of less than 1%). About 130 residents may be displaced by flood (less than 1% of the population).

National Flood Insurance Program (NFIP)

FEMA’s Flood Insurance Study (FIS), and Flood Insurance Rate Maps (FIRMs) are effective as of June 17, 2008. The City complies with the NFIP through enforcement of their flood damage prevention ordinance and their floodplain management program. The city development code includes policies and regulations for flood prone areas including, Natural Resources Overlay Zone (Chapter 19.402, [Natural Resources Administrative Map](#)), Flood Hazard Regulations (Title 18 – Flood Hazard Areas (includes the SFHA and the 1996 flood inundation area; [Flood Hazard Map Viewer](#)), and Willamette Greenway Zone (Chapter 19.401). The City’s flood hazard regulations include substantial damage/substantial improvement provisions which are enforced by the Floodplain Administrator. The last Community Assistance Visit (CAV) for the City was in July 2019. The City does not participate in the Community Rating System (CRS).

Risk Analysis - Repetitive Loss Properties

Milwaukie works to mitigate problems regarding flood issues when they arise. Some areas in the city are more susceptible to flooding issues and have incurred repetitive losses. The Community Repetitive Loss record for Milwaukie identifies ten (10) Repetitive Loss (RL) properties¹³, and one (1) Severe Repetitive Loss (SRL) property¹⁴. RL and SRL properties are troublesome because they continue to expose lives and valuable property to the flooding hazard. Local governments as well as federal agencies such as FEMA attempt to address losses through floodplain insurance and attempts to remove the risk from repetitive loss of properties through projects such as acquiring land and improvements, relocating homes or elevating structures. Continued repetitive loss claims from flood events lead to an increased amount of damage caused by floods, higher insurance rates, and contribute to the rising cost of taxpayer funded disaster relief for flood victims.

¹² DOGAMI, *Multi-Hazard Risk Report for Clackamas County, Oregon (2024)*, Table A-26.

¹³ A Repetitive Loss (RL) property is any insurable building for which two or more claims of more than \$1,000 were paid by the National Flood Insurance Program (NFIP) within any rolling ten-year period, since 1978. A RL property may or may not be currently insured by the NFIP.

¹⁴ A Severe Repetitive Loss (SRL) property is a single family property (consisting of 1 to 4 residences) that is covered under flood insurance by the NFIP, and has incurred flood-related damage for which 4 or more separate claims payments have been paid under flood insurance coverage, with the amount of each claim payment exceeding \$5,000, and with cumulative amount of such claims payments exceeding \$20,000; or for which at least 2 separate claims payments have been made with the cumulative amount of such claims exceeding the reported value of the property.

Table MA-8 provides information on the identified RL and SRL properties. There have been 31 paid RL claims totaling \$1,550,590. Seven (7) of the RL and SRL properties are not insured as of May 2023. For additional detail and a map of their general location see Volume I, Section 2, and Figure 14.

Table MA-7 Repetitive Loss and Severe Repetitive Loss Properties Detail

RL #	RL or SRL Property	Occupancy	Mitigated?	Currently NFIP Insured	Rated Flood Zone	Post FIRM	Paid Claims	Total Paid Amount
38925	SRL	Single Family	NO	NO	B	N	6	\$100,814
75554	RL	2-4 Family	NO	NO	C	N	3	\$28,463
82010	RL	Single Family	NO	NO	X	N	2	\$5,058
83292	RL	2-4 Family	NO	NO	C	N	2	\$17,351
84896	RL	Non-Residential	NO	NO	A19	N	2	\$396,804
245015	RL	Single Family	NO	YES	X	Y	2	\$65,060
245137	RL	Single Family	NO	NO	AE	N	2	\$141,105
246398	RL	2-4 Family	NO	YES	AE	N	3	\$138,450
246399	RL	2-4 Family	NO	YES	AE	N	3	\$226,756
246400	RL	2-4 Family	NO	YES	AE	N	3	\$240,033
288900	RL	Single Family	NO	NO	AE	N	3	\$190,696
Total							31	\$1,550,590

Source: FEMA Region X, Regional Flood Insurance Liaison, email February 23, 2023.

Mitigation Activities

The City maintains a Stormwater Master Plan and has been planning various projects to restore Kellogg Creek. These projects would include building a bridge over the creek and downtown revitalization.

In 2022 and 2023, the city and project partners secured grant funding through the National Oceanic and Atmospheric Administration to pay for the planning, design, and permitting of the Kellogg Creek Restoration and Community Enhancement Project. Although Kellogg Creek has historically been less prone to flooding than Johnson Creek, the removal of the dam and restoration of the lower creek, as well as 14 acres of buried floodplain, is expected to further mitigate the existing flood hazard by draining Kellogg Lake and removing substantial amounts of contaminated sediment impounded by the dam. City engineers are working with project partners to undertake project planning, including risk assessment, design, and permitting for project implementation.

To improve stormwater management the city of Milwaukie continues to line the interiors of pipes in conjunction with Clackamas County Water Environment Services. This mitigation project minimizes the amount of groundwater that infiltrates into sewer lines and helps reduce the overall amount of water going into the wastewater treatment plant, thus reducing the chance of overflow of the sewer system. Additionally, a severe repetitive loss property on Rusk Road was purchased and demolished using FEMA Flood Mitigation Assistance funding in 2018 (grant covered approximately \$315,000 for the purchase of the property, additional funds were allocated for staff hours, title report, due diligence reports, and demolition contract).

In 2006 Clackamas County Water Environment Services partnered with eight community groups to restore the Three Creeks area – including Mount Scott Creek, a tributary to Kellogg Creek and the Willamette River. The group reshaped the stream channel to make it more natural; removed invasive species; planted thousands of native plants to stabilize banks; and put in wood and boulders to stabilize the channel and provide habitat for fish. The groups also removed trash and transient camps that polluted the streams during floods.

Projects completed by the Johnson Creek Watershed Council:

- Tree Plantings along Johnson Creek in various places.
- Storm water detention near Milport.

The North Clackamas Watersheds Council has published a 10-year plan for further restoration and enhancement actions. Although many of these actions are currently unfunded, the city will continue to seek new opportunities to partner with the council.

In 2018 the city completed its Urban Forest Management Plan which includes information on tree planting and maintenance strategies. Increasing the extent of the urban canopy can help to divert, capture, and infiltrate precipitation and surface water that would otherwise contribute directly to flooding.

Future Projections

According to the Oregon Climate Change Research Institute “Future Climate Projections, Clackamas County,”¹⁵ winter flood risk at mid- to low elevations in Clackamas County, where temperatures are near freezing during winter and precipitation is a mix of rain and snow, is projected to increase as winter temperatures increase. The temperature increase will lead to an increase in the percentage of precipitation falling as rain rather than snow. The projected increases in total precipitation, and in rain relative to snow, likely will increase flood magnitudes in the region. Vulnerable populations adjacent to floodways (including the unhoused, manufactured home communities, and campground occupants) will be more at risk as the winter flood risk increases.

Landslide

The HMAC determined that the City’s probability for landslide is **high** and that their vulnerability to landslide is **low**. *The probability rating increased, and the vulnerability rating did not change since the previous version of this NHMP addendum due to the inclusion of smaller scale landslides and landslides occurring upstream of Milwaukie in the current update.*

Volume I, Section 2 describes the characteristics of landslide hazards, history, as well as the location, extent, and probability of a potential event within the region. Although catastrophic landslides have not occurred in Milwaukie, steep slopes do exist along the banks of the Willamette River and Kellogg Creek. Additionally, upstream landslides affecting waters that flow into or through Milwaukie pose secondary hazards to the city due to debris and flood risks.

Landslide susceptibility exposure for Milwaukie is shown in Figure MI-5. Most of Milwaukie demonstrates a low to moderate landslide susceptibility exposure. Approximately 4% of Milwaukie has very high or high, and approximately 31% moderate, landslide susceptibility exposure.¹⁶ However, most of the areas that are identified to exhibit dangerous potential rapidly moving landslides are vacant and often preserved in wooded and dedicated open space.

Note that even if a jurisdiction has a high percentage of area in a high or very high landslide exposure susceptibility zone, this does not mean there is a high risk, because risk is the intersection of hazard, and assets.

¹⁵ Oregon Climate Change Research Institute, *Future Climate Projections, Clackamas County, Oregon*. February 2023.

¹⁶ DOGAMI. [Open-File Report, O-16-02, Landslide Susceptibility Overview Map of Oregon](#) (2016)

Vulnerability Assessment

DOGAMI completed a statewide landslide susceptibility assessment in 2016 ([O-16-02](#)); general findings from that report are provided above and within Figure MI-5.

Potential landslide-related impacts are adequately described within Volume I, Section 2, and include infrastructure damages, economic impacts (due to isolation, and/or arterial road closures), property damages, and obstruction to evacuation routes. Rain-induced landslides, and debris flows can potentially occur during any winter, and thoroughfares beyond City limits are susceptible to obstruction as well.

Across the Willamette River in Riverdale area, there is a large area of land that is at a very high risk of landslide. This could result in flooding along Milwaukie's banks in the event of a landslide that disrupts the flow of the Willamette River. Within the City, parts of Highway 224, SE Lake Rd, and SE Johnson Creek Blvd are located within the areas of high landslide susceptibility. These important arterials help connect Milwaukie. The Milwaukie Heights area, which includes mostly low density residential and open space areas, is also vulnerable. This exposure means that large scale and simultaneous landslides triggered by an earthquake could substantially disrupt City operations buildings, fire stations and key pieces of infrastructure (bridges, sewage pump stations, water reservoirs) that would hinder the ability of the City to respond to emergency situations created by such an event.

As a result, it will be important for the City to pursue opportunities for retrofitting and mitigating important structures and infrastructure, such that said facilities can withstand and survive landslides, particularly simultaneous landslides generated by an earthquake. Business continuity planning shall also be an important factor, given the number of economic centers and employment facilities that are threatened by the landslide hazard.

The most common type of landslides are slides caused by erosion. Slides move in contact with the underlying surface, are generally slow moving, and can be deep. Rainfall-initiated landslides tend to be smaller; while earthquake induced landslides may be quite large. All soil types can be affected by natural landslide triggering conditions.

Natural Hazard Risk Report for Clackamas County

The **Risk Report (DOGAMI, 2024)**¹⁷ provides hazard analysis summary tables that identify populations and property countywide that are vulnerable to the landslide hazard.

According to the Risk Report 102 buildings (no critical facilities) are exposed to the *high and very high landslide susceptibility* hazard for a total exposure of \$73.8 million (a building exposure ratio of about 2%). About 568 residents may be displaced by landslides (about 3% of the population).

Mitigation Activities

Milwaukie works to mitigate future landslide hazards. The city development code includes several policies and regulations to protect slopes including Erosion Control (Chapter 16.28), Willamette Greenway Zone Overlay (Chapter 19.401), and limitations of permitted development within slopes greater than 25%.

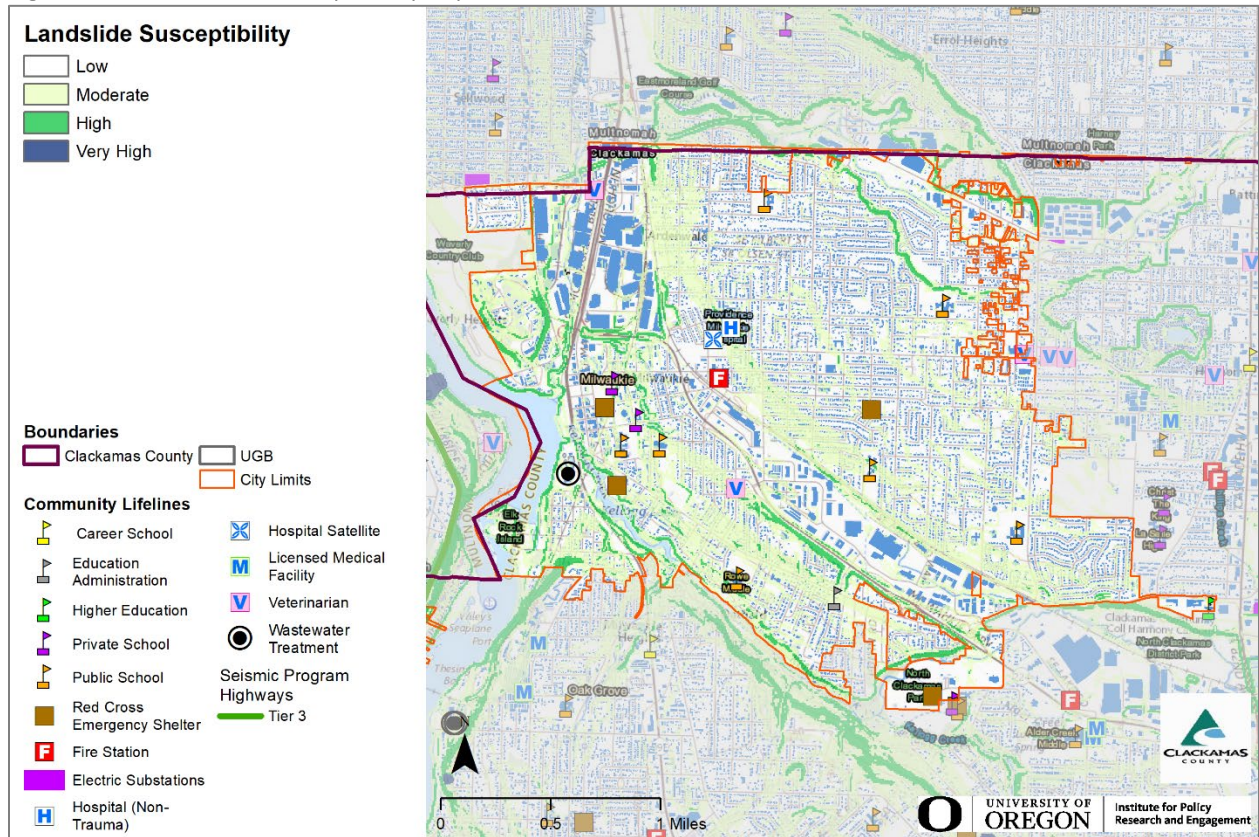
Future Projections

Landslides are often triggered by rainfall when the soil becomes saturated. As a surrogate measure of landslide risk, the Oregon Climate Change Research Institute report presents a threshold based on recent precipitation (cumulative precipitation over the previous 3 days) and antecedent precipitation (cumulative precipitation on the 15 days prior to the previous 3 days). By the 2050s under the higher emissions scenario, the average number of days per year in Clackamas County on which the

¹⁷ DOGAMI, *Multi-Hazard Risk Report for Clackamas County, Oregon* (2024), Table A-26.

landslide risk threshold is exceeded is not projected to change substantially. However, landslide risk depends on multiple factors, and this metric, which is based on precipitation, does not reflect all aspects of the hazard. Additional triggers, such as earthquakes, wildfires, or development, can increase risks of landslides. Future development along slopes or adjacent to riverbanks will be a greater risk of impact from this hazard.

Figure MI-5 Landslide Susceptibility Exposure



Severe Weather

Severe weather can account for a variety of intense, and potentially damaging, hazard events. These events include extreme heat, windstorms, and winter storms. The following section describes the unique probability, and vulnerability of each identified weather hazard.

Extreme Heat

The HMAC determined that the City’s probability for extreme heat events is **high** and that their vulnerability is **high**. *The probability rating increased and vulnerability rating did not change since the previous version of this NHMP.*

Volume I, Section 2 describes the characteristics of extreme heat, history, as well as the location, extent, and probability of a potential event within the region. Generally, an event that affects the County is likely to affect the City as well, but Milwaukie is more vulnerable to the so “heat island effect” than more rural portions of the county. Heat islands occur where extremely localized ambient air temperatures in urban areas are an average of 1-7 degrees higher than those found in surrounding areas. They occur as

structures and pavement absorb, radiate, and reflect heat energy rather than engaging in evapotranspiration as trees and other plants do. Milwaukie’s efforts to preserve and expand its urban forest canopy will continue to play a role in mitigating the formation of heat islands, but the threat remains a significant one.

A severe heat episode or "heat wave" occurs about every two to three years. These heat episodes typically last two to three days but can last as many as five days. A severe heat episode can be defined as consecutive days of temperatures upper 90s to around 100. Severe heat hazard in the Portland metro region can be described as the average number of days with temperatures greater than or equal to 90-degrees, or 100-degrees, Fahrenheit. On average the region experiences 14.6 days with temperatures above 90-degrees Fahrenheit, and 1.2 days above 100-degrees Fahrenheit annually, based on new 30-year climate averages (1991-2020) from the National Weather Service – Portland Weather Forecast Office. The 30-year average is used to account for short-term variation in temperatures. The frequency of high temperature days is expected to increase with the growing climactic instability of anthropogenic climate change. For example, the six hottest summers on record for Portland occurred between 2015 and the present.

Future Projections

Increasing frequency and duration of extreme heat events pose threats to human and animal life, as well as a danger to agricultural production in the Willamette Valley.

According to the Oregon Climate Change Research Institute “Future Climate Projections, Clackamas County,”¹⁸ the number, duration, and intensity of extreme heat events will increase as temperatures continue to warm. In Clackamas County, the number of extremely hot days (days on which the temperature is 90°F or higher) and the temperature on the hottest day of the year are projected to increase by the 2020s and 2050s under both the lower (RCP 4.5) and higher (RCP 8.5) emissions scenarios. The number of days per year with temperatures 90°F or higher is projected to increase by an average of 12 (range 3–21) by the 2050s, relative to the 1971–2000 historical baselines, under the higher emissions scenario. The temperature on the hottest day of the year is projected to increase by an average of about 7°F (range 2–11°F) by the 2050s. Higher temperatures and longer/more extreme heat events will have negative impacts upon vulnerable populations such as those over 65+, children, those living in older or temporary housing, and field workers.

Windstorm

The HMAC determined that the City’s probability for windstorm is **high** and that their vulnerability to windstorm is **moderate**. *These ratings increased since the previous version of this NHMP addendum due to the increased frequency and intensity of windstorms in recent years.*

Volume I, Section 2 describes the impacts caused by windstorms, including power outages, downed trees, heavy precipitation, building damages, and storm-related debris. Additionally, transportation and economic disruptions result as well.

Damage from high winds generally has resulted in downed utility lines and trees, usually limited to several localized areas. Electrical power can be out anywhere from a few hours to several days. Outdoor signs have also suffered damage. If the high winds are accompanied by rain (which they often are), blowing leaves and debris may clog drainage-ways, which in turn may cause localized pluvial flooding.

¹⁸ Oregon Climate Change Research Institute, *Future Climate Projections, Clackamas County, Oregon*. February 2023.

Future Projections

Limited research suggests little if any change in the frequency and intensity of windstorms in the Northwest as a result of climate change. Those impacted by windstorms at present, including older residential or commercial developments with above-ground utilities, poor insulation or older construction, heavy tree canopies, or poor storm drainage, will continue to be impacted by windstorms in the future.

Winter Storm (Snow/Ice)

The HMAC determined that the City's probability for winter storm is **high** and that their vulnerability to winter storm is **moderate**. *These ratings did not change since the previous version of this NHMP.*

Volume I, Section 2 describes the characteristics of winter storm hazards, history, as well as the location, extent, and probability of a potential event within the region. Severe winter storms can consist of rain, freezing rain, ice, snow, cold temperatures, and wind. They originate from troughs of low pressure offshore that ride along the jet stream during fall, winter, and early spring months. Severe winter storms affecting the city typically originate in the Gulf of Alaska or in the central Pacific Ocean. These storms are most common from November through March.

Most winter storms do not cause significant damage, but they are semi-frequent, and have the potential to impact economic activity. Road closures due to winter weather can interrupt commuter and commercial traffic, and roads that are not closed may present vehicle operators and pedestrians with dangerous conditions.

Future Projections

According to the Oregon Climate Change Research Institute "Future Climate Projections, Clackamas County,"¹⁹ cold extremes will become less frequent and intense as the climate warms. In Clackamas County, the number of cold days (maximum temperature 32°F or lower) per year is projected to decrease by an average of 6 (range -3– -8) by the 2050s, relative to the 1971–2000 historical baselines, under the higher emissions scenario. The temperature on the coldest night of the year is projected to increase by an average of 6°F (range 0– 11°F) by the 2050s.

The intensity of extreme precipitation is expected to increase as the atmosphere warms and holds more water vapor. In Clackamas County, the number of days per year with at least 0.75 inches of precipitation is not projected to change substantially. However, by the 2050s, the amount of precipitation on the wettest day and wettest consecutive five days per year is projected to increase by an average of 15% (range 0–31%) and 10% (range -1–26%), respectively, relative to the 1971–2000 historical baselines, under the higher emissions scenario.

Vulnerable populations will be more likely to experience the negative impacts of winter storms in the future, particularly the unhoused and the elderly.

Vulnerability Assessment

Due to insufficient data and resources, Milwaukie is currently unable to perform a quantitative risk assessment, or exposure analysis, for the extreme heat, windstorm, and winter storm hazards. However, the city completed an analysis, using the best available data, as a component of the vulnerability assessment in 2009, updated in 2012, and reviewed and updated, as appropriate, in 2018 and 2023. This analysis looked at identified hazard areas in conjunction with available data on property exposed to the

¹⁹ Oregon Climate Change Research Institute, *Future Climate Projections, Clackamas County, Oregon*. February 2023.

hazard. Exposure of community assets to natural hazards was determined by manually comparing community assets with each hazard and identifying where assets and hazards intersected.

The areas of the city that are often most at risk of severe storms are residential areas on steeper slopes, where roads may be icy and, thus, difficult to climb and descend. Road corridors leading to residential areas with fuller tree canopies are susceptible to downed tree limbs, and those areas that are above 500 feet in elevation are particularly vulnerable. However, some weather systems are characterized by a temperature inversion, where the valley floor is colder than the nearby hills. Consequently, severe storms affect the entire city. In 2016, 2017, 2019, and 2021 the State of Oregon declared a state of emergency for severe storms. The city's Plowing, Sanding, and De-Icing Removal Plan is maintained by the Public Works Department and includes provisions to place equipment on designated principal routes throughout the city (Plowing and Sanding Routes Map). Private property owners are also required to clear the sidewalks abutting their property of snow or ice within 24 hours after the snow has stopped falling. For more information see the city's Winter Weather Response Plan information webpage.

The major risk to property results from exposed utilities, especially power lines and water pipes that are damaged by wind, broken tree limbs and cold temperatures. Businesses also suffer economic losses when they must close as the result of the inclement weather and/or the loss of power, which, in turn, disrupts the local supply chain of goods and services. Periods of extended ice coverage hinder emergency response services and limit the mobility of residents, which could result in serious life safety issues.

Residents and businesses that are in areas that exhibit the severe storm hazard face some risk of damage from severe storms. Severe weather events are expected to impact nearly all city residents. In addition, critical infrastructure, economic centers, cultural or historic assets, environmental assets, and hazardous material sites are exposed to the severe weather hazards. For a list of facilities and infrastructure vulnerable to these hazards see the Community Assets section.

The exposure of these facilities and infrastructure means that severe weather events could substantially disrupt the operations of city government buildings and fire stations, impairing key city functions, while hindering the ability of emergency response personnel to respond to emergency situations that are created by a severe storm event.

All these facilities depend upon utility lines, roads and bridges to operate and perform their respective important functions within the city. Exposed utility and power lines are particularly vulnerable to damage from severe winter storms by wind, ice and snow.

Hardened infrastructure, like bridges and roads, can sustain a severe winter storm, but during the event, they are often hazardous to traverse because of icy, windy and snowy conditions.

Consequently, severe weather (wind or winter storm) could substantially disrupt numerous key resources and facilities within the city through impediments to the transportation system and damage to the power grid. Among other things, these transportation problems and power failures disrupt business operations and educational facilities, resulting in economic losses and halting educational opportunities.

Power to hazardous material sites, including gas stations, rail yards, and some industrial facilities in the city, could also be disrupted. The sites themselves could be damaged or rendered inaccessible in an especially severe storm. These conditions could pose threats to the natural environment of the city and the health of its population, while disrupting the availability of gasoline for vehicle transport.

As a result, it will be important for the city to pursue opportunities for undergrounding utilities and retrofitting utility lines so that they may withstand cold weather conditions without freezing and bursting. Adhering to current building codes for weatherization of structures, as well as current engineering and fire codes that pertain to the steepness of new roads, are also key factors for the city to consider.

Business continuity planning shall also be an important factor, given the number of economic centers and employment facilities that are threatened by the severe storm hazard

Mitigation Activities

Mitigating severe weather can be difficult because storms affect all areas of the city, but Milwaukie has made progress to reduce the effects of storms. Milwaukie has a tree board to maintain a plan for the care of the trees as well as codes governing where trees can be planted (Chapter 16.32). Most utilities are underground, and all new utilities are required to be underground. In case of power outages the city's critical facilities have back up power generation. Milwaukie also has a designated snow plow and sanding routes to help expedite snow removal ([Plowing and Sanding Routes Map](#)). The city is also partnering with Clackamas County to develop the Ledding Library as a cooling center and is exploring options for the potential establishment of an overnight warming shelter in the downtown area.

Volcanic Event

The HMAC determined that the City's probability for a volcanic event is **low** and that their vulnerability to a volcanic event is **low**. *These ratings did not change since the previous version of this NHMP addendum.*

Volume I, Section 2 describes the characteristics of volcanic hazards, history, as well as the location, extent, and probability of a potential event within the region. Generally, an event that affects the western portion of the County is likely to affect Milwaukie as well. Volcanoes are located near Milwaukie, the closest of which are Mount Hood, Mount Adams, Mount Saint Helens, Mount Rainier, and the Three Sisters.

Vulnerability Assessment

Given Milwaukie's relatively long distance from volcanoes, the city is unlikely to experience the immediate effects that eruptions may have on surrounding areas (i.e., mud and debris flows, or lahars). Depending on wind patterns and which volcano erupts, however, the city may experience ashfall. The eruption of Mount St. Helens in 1980, for example, coated the Willamette Valley with a fine layer of ash. In the event of an eruption on Mount Hood, the city could experience a heavier coating of ash due to its closer proximity to that volcano.

Natural Hazard Risk Report for Clackamas County

The **Risk Report (DOGAMI, 2024)**²⁰ provides hazard analysis summary tables that identify populations and property countywide that are vulnerable to the volcanic event (lahar) hazard. The Risk Report did not identify population or property within the study area that may be impacted by the profiled volcanic event (lahar) hazard.

Mitigation Activities

The existing volcano hazard mitigation activities are conducted at the county, regional, state, and federal levels and are described in the Clackamas County NHMP.

Future Projections

Although the science of volcano predictions is improving, it remains challenging to predict a potential volcanic event. Ash fall, which will be the greatest impact, will impact the entire County. Impacts will be felt hardest by property managers (ranches, farmers, etc.) and by those relying upon clean surface water (for drinking water production and irrigation).

²⁰ DOGAMI, *Multi-Hazard Risk Report for Clackamas County, Oregon (2024)*, Table A-26.

Wildfire

The HMAC determined that the City's probability for wildfire is **high**, and that their vulnerability to wildfire is **high**. *The probability and vulnerability ratings increased since the previous version of this NHMP due in part to the increased hazard posed by wildfire smoke.*

The [Clackamas County Community Wildfire Protection Plan \(CWPP\)](#) is hereby incorporated into this NHMP addendum by reference, and it will serve as the wildfire section for this addendum. The following presents a summary of key information; refer to the full CWPP for a complete description, and evaluation of the wildfire hazard. Information specific to Milwaukie is found in the following chapter: Chapter 9.3: Clackamas Fire District #1.

Volume I, Section 2 describes the characteristics of wildland fire hazards, history, as well as the location, extent, and probability of a potential event within the region. The location, and extent of a wildland fire vary depending on fuel, topography, and weather conditions.

Weather and urbanization conditions are primarily at cause for the hazard level. Milwaukie has not experienced a wildfire within City limits, but the city has abundant wooded areas that are a concern in the case of a wildfire event. Clackamas Fire District #1 provides services to other cities besides Milwaukie, including: Oregon City, Happy Valley, Johnson City, and many unincorporated areas within Clackamas County. Figure MI-6 shows overall wildfire risk in Milwaukie.

Clackamas County has two major physiographic regions: the Willamette River Valley in western Clackamas County and the Cascade Range Mountains in eastern and southern Clackamas County. The Willamette River Valley, which includes Milwaukie, is the most heavily populated portion of the county and is characterized by flat or gently hilly topography. The Cascade Range has a relatively small population and is characterized by heavily forested slopes. Eastern Clackamas County is at higher risk to wildfire than western portions of the county due to its dense forest land. Human caused fires are responsible for most fires in Clackamas County.

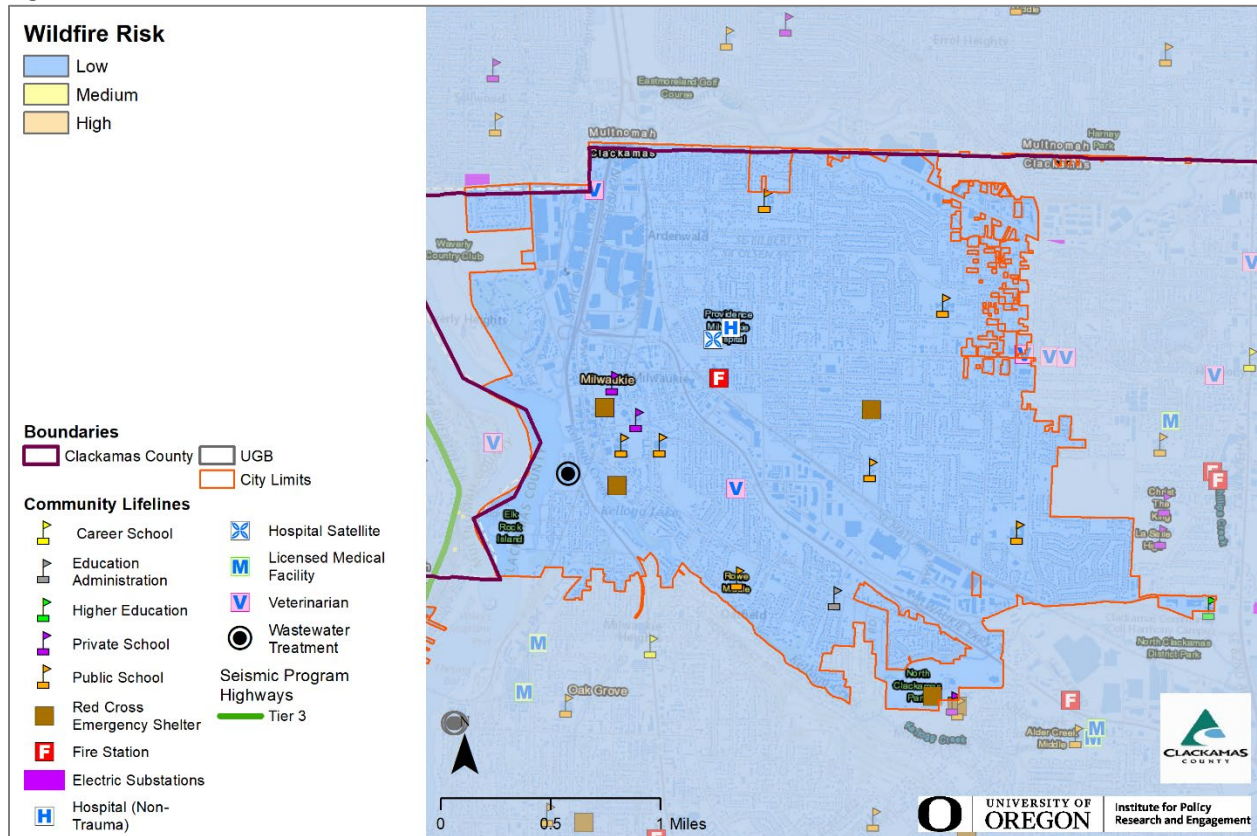
Milwaukie is highly urbanized and as such does not have as much danger of wildfire within its boundaries as more rural locations in Clackamas County. The City does have parks and neighborhoods surrounded by mature trees, as well as several natural areas. Located on the edge of its southeastern boundary is the Three Creeks Natural Area, which has heavy fuels adjacent to homes and infrastructure. Three Creeks Natural Area is a designated Medium Priority Community at Risk (CARs).²¹ Elk Rock Island, though listed as low risk for wildfire by the Oregon Wildfire Risk Explorer, is a publicly owned greenspace near a built-up residential area. The island contains dense vegetation which dries out in the summer, and has no roads, which makes firefighting operations on the island more difficult, as demonstrated by the large fire there in 2020.

Most of the city has less severe (moderate or less) wildfire burn probability. This indicates expected flame lengths less than four feet under normal weather conditions.²² However, conditions vary widely and with local topography, fuels, and local weather conditions, especially wind. Under warm, dry, windy, and drought conditions, the City expects higher likelihood of fire starts, higher intensity, more ember activity, and a more difficult to control wildfire that will include more fire effects and impacts.

²¹ Clackamas County Community Wildfire Protection Plan, *Clackamas Fire District #1* (2018), Table 10.13-1.

²² [Oregon Wildfire Risk Explorer](#), date accessed February 14, 2023.

Figure MI-6 Wildfire Risk



Source: Map created by Oregon Partnership for Disaster Resilience.

Data: Oregon statewide wildfire risk map created by Oregon State University (unpublished). Preparedness Framework Implementation Team (IRIS v3).

Note: To view additional wildfire risk information click this [link](#) to access Oregon Explorer’s CWPP Planning Tool

Vulnerability Assessment

The City completed an analysis, using the best available data, as a component of the vulnerability assessment in 2009, updated in 2012, and reviewed and updated, as appropriate, in 2018 and 2023. This analysis looked at identified hazard areas in conjunction with available data on property exposed to the hazard. Exposure of community assets to natural hazards was determined by manually comparing community assets with each hazard and identifying where assets and hazards intersected.

Milwaukie does not have much vulnerability to wildfire flames, though there is always the risk of fire destroying residential and commercial areas. Vegetation along roadways can be highly dangerous, as negligent motorists provide ignition sources by tossing cigarette butts out car windows. Because schools are generally located near parks and scenic areas, they can be threatened by wildfires.

The potential community impacts, and vulnerabilities described in Volume I, Section 2 are generally accurate for the city as well. Milwaukie’s fire response is addressed within the CWPP which assesses wildfire risk, maps wildland urban interface areas, and includes actions to mitigate wildfire risk. The City will update its wildfire risk assessment if the fire plan presents better data during future updates (an action item is included to participate in future updates to the CWPP).

Property can be damaged or destroyed with one fire as structures, vegetation, and other flammables easily merge to become unpredictable, and hard to manage. Other factors that affect ability to effectively

respond to a wildfire include access to the location, and to water, response time from the fire station, availability of personnel, and equipment, and weather (e.g., heat, low humidity, high winds, and drought).

Although the direct threat of wildfire burning Milwaukie is low, the city is vulnerable to smoke and aerial particulate matter generated by fires in the region. The 2020 wildfire season was especially bad, with the air quality index in the Portland metropolitan area being recorded as over 500, the upper limit of that scale. The region’s air quality was rated as the worst in the world during that period. Air quality is not listed as standalone hazard by FEMA or the State of Oregon for the purposes of natural hazard mitigation planning. It was, nonetheless, discussed by the Milwaukie HMAC and factored into the vulnerability rating calculation for wildfires.

Natural Hazard Risk Report for Clackamas County

The **Risk Report (DOGAMI, 2024)**²³ provides hazard analysis summary tables that identify populations and property countywide that are vulnerable to the wildfire hazard.

According to the Risk Report 10 buildings (no critical facilities) are exposed to the *high and (or) moderate (medium) risk wildfire* hazard for a total exposure of \$5.6 million (a building exposure ratio of less than 1%). About 59 residents may be displaced by wildfires (less than 1% of the population).

Mitigation Activities

Milwaukie and Clackamas Fire District #1 (CFD#1) use several mitigation tools to reduce the city’s risk to wildfires. CFD #1 provides emergency fire suppression, medical response, and rescue services to the City of Milwaukie. Mutual aid agreements with neighboring jurisdictions are also in place. Water supply and storage capacity in Milwaukie conforms with recommended fire flow requirements.

The city does not allow backyard burning due to requirements of DEQ. The CFD #1 provides outreach and education to the community on wildfire mitigation via news releases, posters, signage, website messages, safety exhibits at community events, and visits to schools, civic organizations, and neighborhood associations.

Partially in response to the fire hazard they create, the city banned the sale and use of fireworks in 2023. Additionally, the city partners with the North Clackamas Parks and Recreation District to manage and reduce the amount of potential fuel for wildfires in natural areas.

Clackamas Fire District #1 (CFD #1) serves the city of Milwaukie. For more information on the fire district see their addendum.

Future Projections

According to the Oregon Climate Change Research Institute “Future Climate Projections, Clackamas County,”²⁴ wildfire frequency, intensity, and area burned are projected to continue increasing in the Northwest. Wildfire risk, expressed as the average number of days per year on which fire danger is very high, is projected to increase in Clackamas County by 14 (range -6– 34) by the 2050s, relative to the historical baseline (1971–2000), under the higher emissions scenario. Similarly, the average number of days per year on which vapor pressure deficit is extreme is projected to increase by 29 (range 10–44) by the 2050s. Communities at risk to wildfire include those within the urban wildfire interface or along river or creek corridors, where fire can travel quickly. Communities will need to address growing wildfire risks if populations are not restricted from expanding further into higher risk areas.

²³ DOGAMI, *Multi-Hazard Risk Report for Clackamas County, Oregon* (2024), Table A-26.

²⁴ Oregon Climate Change Research Institute, *Future Climate Projections, Clackamas County, Oregon*. February 2023.

Attachment A: Action Item Changes

Table MI-8 is an accounting of the status (complete or not complete) and major changes to actions since the previous NHMP. All actions were renumbered in this update to be consistent with other jurisdictions that are participating in the multi-jurisdictional NHMP. All actions marked not complete are ongoing, are still relevant, and are included in the updated action plan (Table MI-1).

Previous NHMP Actions that are Complete:

Multi-Hazard #2, “Improve network of communications during a disaster.” Complete. Although there are always opportunities for improvement, the combination of satellite, radio, and cellular communication technology provides layers of redundancy in the event of a major disaster.

Multi-Hazard #4, “Maintain and promote CERT program activity in the area and recruit new members for training.” Complete. The City regularly coordinates with CERT and Clackamas FD1.

Multi-Hazard #7, “Integrate the goals and mitigation actions from the Milwaukie Natural Hazards Mitigation Plan into existing regulatory documents and programs, where appropriate.” Comprehensive plan last updated in 2021.

Earthquake #1, “Conduct seismic evaluations on identified critical and essential facilities and infrastructure and implement appropriate structural and non-structural mitigation strategies.” Complete. The city has evaluated its existing infrastructure and will continue to evaluate newly acquired infrastructure for seismic resiliency.

Flood #2, “Ensure continued compliance with the National Flood Insurance Program through enforcement of local floodplain management ordinances.” Complete. The city is continuing to comply with participation requirements for the National Flood Insurance Program

Previous NHMP Actions that are Not Complete and No Longer Relevant:

Drought #1, “Develop public brochures to raise awareness about drought hazards and mitigation actions residents can take to reduce the impact of drought.” No longer relevant. Pamphlets are an inefficient and largely outmoded form of communication. This has been rolled into Action Item 2.

Table MI-8 Status of All Hazard Mitigation Actions in the Previous Plan

2018 Action Item	2024 Action Item	Status	Still Relevant? (Yes/No)
Multi-Hazard #1	#1	Not Complete	Yes
Multi-Hazard #2	-	Complete	No
Multi-Hazard #3	#2	Not Complete, revised	Yes
Multi-Hazard #4	-	Complete	No
Multi-Hazard #5	#3	Not Complete	Yes
Multi-Hazard #6	#4	Not Complete	Yes
Multi-Hazard #7	-	Complete	No
Multi-Hazard #8	#5	Not Complete, revised	Yes
Drought #1	-	Complete	No
Earthquake #1	-	Complete	No
Flood #1	#8	Not Complete	Yes
Flood #2	-	Complete	No
Severe Weather #1	#10	Not Complete	Yes
Wildfire #1	#11	Not Complete	Yes

Attachment B: Public Involvement Summary

Members of the steering committee provided edits and updates to the NHMP prior to the public review period as reflected in the final document.

This document was completed with the assistance of a substantial community engagement effort. During August 2023, members of the public had the opportunity to ask questions and offer suggestions about the composition of the NHMP through the Engage Milwaukie platform. More than 450 community members visited the page during these months. The suggestions made through the platform resulted in several additions to the list of essential facilities and environmental assets. This opportunity was advertised through the city website, the Pilot newsletter, Facebook, and various other media.

Drafts of the plan were submitted to the Milwaukie City Council for discussion at the council's August 1 and August 15, 2023 regular meetings. Suggestions and comments from members of the council were incorporated throughout the document.

Also in August, a draft of this document was sent to 23 community groups with focus areas ranging from housing and medical care to education and environmental protection. Substantive changes, particularly concerning the flood hazard, were made based on feedback from these partners.

To provide the public information regarding the draft NHMP addendum, and provide an opportunity for comment, an announcement (see below) was provided from February 1 through March 31 on the County's website and shared via a link on the City's website. There were no comments provided. The city also provided a link in summer 2023 that included an opportunity to provide feedback, a poll, a mapping exercise, and an opportunity to discuss action items). Additional opportunities for stakeholders and the public to be involved in the planning process are addressed in Volume III, Appendix B.

A diverse array of agencies and organizations were provided an opportunity to provide input to inform the plan's content through a variety of mechanisms including the opportunity for comment on the draft plan. The agencies and organizations represent local and regional agencies involved in hazard mitigation activities, those that have the authority to regulate development, neighboring communities, representatives of businesses, academia, and other private organizations, and representatives of nonprofit organizations, including community-based organizations, that work directly with and/or provide support to underserved communities and socially vulnerable populations. For more information on the engagement strategy see Volume III, Appendix B.

Website Posting

Home / Natural Hazard Mitigation Plan

Natural Hazard Mitigation Plan

This is a chance to provide feedback about the **Natural Hazard Mitigation Plan (NHMP)**. The NHMP is an opportunity for the City of Milwaukee to review and consider natural hazards that may affect its residents and businesses. The plan includes a ranking of potential hazards, description of how they may affect Milwaukee, and a list of action items to be taken to improve the city's ability to prepare for those hazards.



While not every proposed change will be included in the final plan, the city is collecting community feedback, and will consider and respond to comments and questions. After reviewing the **NHMP**, please consider completing the first three engagement tools below (**Quick Poll**, **Mapping Exercise** and **Action Items Discussion**). Additional questions can also be added to the **Questions** tool.

The NHMP is only one aspect of the city's emergency management strategy, and updating it every five years allows the city to remain eligible for certain federal emergency management grants. Please note, the NHMP does not contain any information about how the city will respond to hazards that are not naturally occurring.

Feedback and questions can also be shared by contacting the staff person listed under **"Who's Listening"** below or to the right (depending on the device being used).

The city is excited to hear from you!

Register to get involved!



STAY INFORMED

Subscribe for project updates

Your email address..

SUBSCRIBE

7 members of your community are following this project.

Documents

Milwaukee NHMP August 17 Draft (2.33 MB) (pdf)

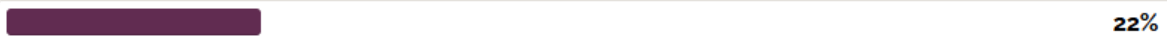
More..

Based on the food, water, and medications you have at home right now, how long could your household go without outside assistance following a major disaster? Select the option that best fits your household.

Less than three days



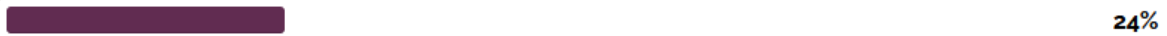
Three to five days



At least one week



Two weeks or more



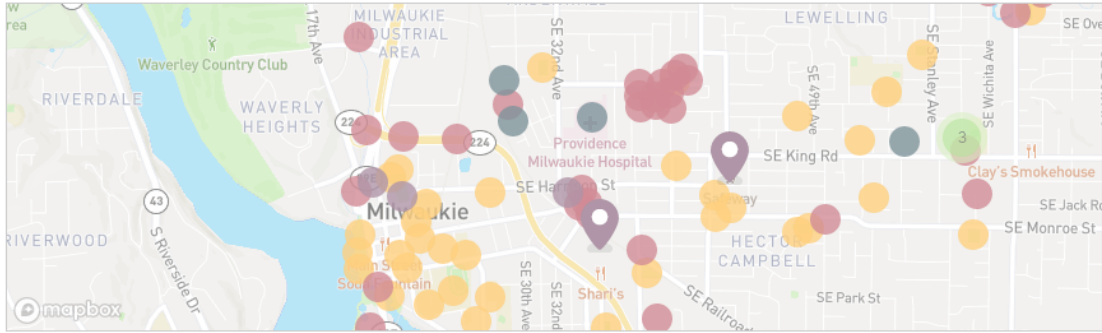
I'm not sure



Total Votes : 104

Mapping Exercise

7 months



This map includes the following types of sites that have been recognized as being critical to the city's Natural Hazards Mitigation Plan. You can click on each circle on the map for the site's name, type, address, and asset type.

- Community spaces (gold)
- Critical infrastructure (red)
- Essential facilities (purple)
- Vulnerable populations (blue)

If you know of any critical sites that are missing or are out of date, please drag and drop a pin using the plus sign (+) to let us know where they are and provide a brief description.

The chart below includes a list of action items that the city proposes to work on over the next five years. The full text of these items can be found on page MA-48 of the [NHMP](#). It is important to remember that not all action items are fully funded so grants and other outside revenue sources will be important in completing these action items.

Please join the discussion if there are items not on this list that you would like to see included. You can also join the discussion if there are any items that you think should be removed from the list or altered.

Thanks for participating!

Proposed Milwaukie NHMP Action Items	
Item Number	Description
MH 1	Coordinate with Clackamas County, OEM, the American Red Cross, and other relevant agencies to identify shelter facilities within Milwaukie.
MH 2	Increase outreach and education for hazard awareness and natural disaster preparedness, especially for low-income, elderly, non-English-speaking, and other vulnerable populations.
MH 3	Maintain and enhance strategies for debris management for all hazards.
MH 4	Improve and obtain resources and equipment essential for responding to and recovering from disasters.
MH 5	Coordinate natural hazard related climate change action items through the Milwaukie Community Climate Action Plan.
F 1	Evaluate alternatives for reducing the flooding hazard for properties along Kellogg Creek, Johnson Creek, Mount Scott Creek area, and the Willamette River.
SW 1	Bury and protect vulnerable critical infrastructure, such as power lines, to lessen potential failures during severe weather.
WF 1	Coordinate wildfire mitigation action items through the Clackamas County Community Wildfire Protection Plan.

14 comments

Recently active | Posted first

HMAC

The Hazard Mitigation Advisory Committee (HMAC) members possessed familiarity with the community and how it is affected by natural hazard events. The HMAC guided the update process through several steps including goal confirmation and prioritization, action item review and development, and information sharing, to update the NHMP and to make the NHMP as comprehensive as possible.

Members of Milwaukie HMAC met on the following dates:

Meeting #1 and #2: March 9 and May 22, 2023

During these meetings, the HMAC:

- Reviewed the previous NHMP, and were provided updates on hazard mitigation planning, the NHMP update process, and project timeline.
- Updated recent history of hazard events in the city.
- Reviewed and confirmed the County NHMP's mission and goals.
- Reviewed and provided feedback on the draft risk assessment update including community vulnerabilities and hazard information.
- Reviewed and updated their existing mitigation strategy (actions).
- Reviewed and updated their implementation and maintenance program.
- Discussed the NHMP public outreach strategy.

Meeting #2: December 6, 2023 (via remote conference)

During this meeting, the HMAC:

- Confirmed and provided feedback on the final draft risk assessment update including community vulnerabilities and hazard information provided by DOGAMI (Risk Report).
- Reviewed and confirmed the city's capabilities assessment.
- Reviewed, confirmed, and prioritized the city's mitigation strategies.



MILWAUKIE POLICE DEPARTMENT

Memorandum

To: Mayor Batey and Milwaukie City Council

From: Ryan Burdick, Police Chief *RB*

Through: Emma Sagor, Acting City Manager

Date: June 17, 2024

Re: OLCC Application – Pietro’s Pizza

Action requested:

It is respectfully requested the council approve the OLCC application for Pietro’s Pizza located at 11050 SE Oak St. Milwaukie, 97222

We have conducted a background check and find no reason to deny the request for the liquor license.



MILWAUKIE POLICE DEPARTMENT

Memorandum

To: Mayor Batey and Milwaukie City Council

From: Ryan Burdick, Police Chief *RB*

Through: Emma Sagor, Acting City Manager

Date: June 18, 2024

Re: OLCC Application – Taqueria Portland LLC

Action requested:

It is respectfully requested the council approve the OLCC application for Taqueria Portland LLC located at 5821 SE Johnson Creek Blvd. Milwaukie, 97222

We have conducted a background check and find no reason to deny the request for the liquor license.



Council Retreat

CR

Milwaukee City Council



COUNCIL RESOLUTION No. 9-2023

**A RESOLUTION OF THE CITY COUNCIL OF THE CITY OF MILWAUKIE, OREGON,
ADOPTING THE COUNCIL COMMUNICATION AGREEMENT.**

WHEREAS open, direct, and positive communication among the Mayor and Councilors and between them, staff, and the public is critical to ensuring clear and easily understood public information, and

WHEREAS open, direct, and positive communication among the Mayor and Councilors and between them, staff, and the public is essential to a healthy community-wide debate on issues, and

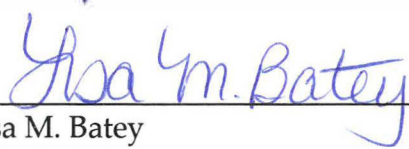
WHEREAS the Council Communication Agreement is intended to ensure open public processes that lead to closure.

Now, Therefore, be it Resolved by the City Council of the City of Milwaukie, Oregon, that:

- Section 1: The Council Communication Agreement (Exhibit A) is adopted.
- Section 2: Resolution 23-2022 adopted March 15, 2022, is repealed.
- Section 3: This resolution is effective immediately upon adoption.

Introduced and adopted by the City Council on **February 21, 2023.**

This resolution is effective immediately.



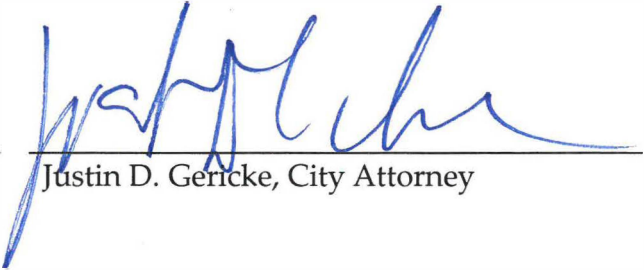
 Lisa M. Batey

ATTEST:

APPROVED AS TO FORM:



 Scott S. Stauffer, City Recorder



 Justin D. Gericke, City Attorney

COUNCIL COMMUNICATION AGREEMENT

Guaranteed access to clear and easily understood information is a value of the City of Milwaukie. This agreement is intended to foster conduct that realizes that value and ensures a healthy debate about competing ideas. Finally, it seeks closure and a community that moves forward together, secure in the knowledge that decisions were made openly and fairly.

This agreement has one common behavioral thread—mutual respect. Thus, if the list does not anticipate a situation, a response that is respectful of all concerned should suffice.


1. In all city business, in my role as a member of Council, I will:
 - a) demonstrate respect for all who are involved,
 - b) respect various thoughts and avoid denigrating others,
 - c) clarify facts and opinions to ensure understanding,
 - d) clearly state my own opinion as being mine,
 - e) look for ways to praise worthwhile efforts and accomplishments, and
 - f) stay focused and participate.
2. In working with the Mayor and other Councilors, I will:
 - a) provide prompt notice of items requiring Council action I am introducing at meetings,
 - b) always represent the city's position before other jurisdictions unless none has been adopted, in which case I will inform the Mayor and Council in a timely manner of the position(s) I have taken,
 - c) work toward consensus,
 - d) not publicly (including all internet and written content) criticize Council, individual members of Council, or Council decisions, but may respectfully disagree with a decision, and
 - e) first address a concern about either a violation of these agreements or any other matter in a direct, appropriate, private, and timely manner.
3. In working to seek broad-based community support, I will:
 - a) communicate with the community openly and freely to exchange information and ideas,
 - b) engage the community in a shared dialogue, and
 - c) listen and respond to well-founded and constructive criticism made to, or by, Council or city staff, or citizens.
4. In working with staff, I will:
 - a) provide direction through the city manager with the concurrence of the Mayor and Council and with respect given to the city's chain of command,
 - b) refrain from contacting line staff (non-management) with requests or inquiries; this does not apply to questions stemming from Council packets when in preparation for the upcoming meeting,

- c) respect the city's "one-hour" guideline, not requesting work product from the city manager, assistant city manager, or responsible city manager / director that takes more than an hour to produce without first securing the support of a majority of Council, and
- d) never, in any public way, insult or denigrate any staff member, and if I have an unresolved disagreement concerning a staff member's actions, I will bring it to the city manager.

5. In working with the city attorney, I will:

- a) respect that the city attorney represents the city as a whole, and if the Council's direction to the city attorney conflicts with the city attorney's ethical obligations to the city, the city attorney must resolve this conflict in favor of the city,
- b) remember that information a Council member shares with the city attorney is not confidential with respect to other Council members, and the information may be disclosed to the entire Council,
- c) contain my requests for information or assistance to items that can be responded to quickly and will work to secure the support of the majority of Council for items taking more than an hour, and
- d) respect that all responses to legal questions will be sent to the entire Council in an effort to protect all parties, keep all City Councilors informed, and ensure there is no perception of favoritism.

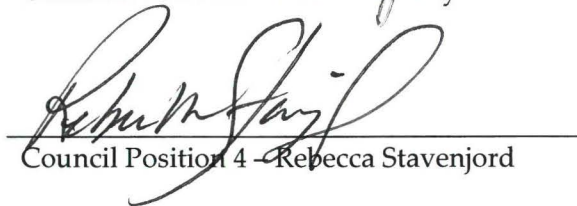
Council Position 1 – Adam Khosroabadi



Council Position 2 – Robert Massey



Council Position 3 – Desi Nicodemus



Council Position 4 – Rebecca Stavenjord



Mayor – Lisa Batey

Milwaukie City Council
Council Committee Assignments

Attachment CR 2.

LAST UPDATED: 2-Jul-24

Committee	Focus	Governing Authority	2024 Appointee	Staff Resources	Elected Rep Required	Meeting Schedule	Policy areas
Audit Committee	The City of Milwaukie created an Audit Committee of the Milwaukie City Council to ensure that audits of the City's financial statements are completed annually in accordance with Oregon state law, to share oversight responsibility of the City's independent auditors with management, and to assist City management in the review and selection of the City's independent auditor (Res. No. 56-2012).	The Audit Committee is to consist of one member of the City Council and one member of the City Budget Committee each appointed by the Council for two-year staggered terms and two citizen members with an interest in City government financial operations, with preference first given to a Certified Public Accountant residing within City limits and second to a Certified Public Accountant with City affiliation, also for a two year term.	<u>Robert Massey</u>	Emma Sagor, Michael Osborne	Yes	Meetings are held at least twice annually	Finance
Boards, Committees, and Commissions (BCC) Selection Committee	Purpose is to interview citizens who have applied to serve on citywide Boards, Committees, and Commissions.	Comprised of the Mayor, rotating Councilor, and Staff Liaison.	<u>Lisa Batey</u>	Scott Stauffer	Yes	Interviews are held as needed.	Public engagement
Budget Committee	The Budget Committee is established in accordance with the provisions of ORS 294.336 to review the annual city budget document as prepared by the city budget officer and to recommend an approved budget to the City Council for adoption.	The Committee includes five City Councilors plus an equal number of City residents who are registered voters. The Council appoints the citizen members for four-year terms. The Budget Committee meets as directed by City Council. Typically, the budget preparation meetings are held in the early spring, with additional meetings scheduled as needed and to review revenue and expenditure reports.	<u>Mayor and Council</u>	Emma Sagor, Michael Osborne	Yes	Meetings are held quarterly	Finance
Clackamas Cities Association (CCA)	12 cities in Clackamas County get together for dinner and speaker events to share ideas and to network.	City of Lake Oswego provides general coordination for cities.	<u>Mayor and Council</u>	Emma Sagor, Scott Stauffer	No	Dinners are held monthly. Typically, dinners are held on the third Thursday of the month.	Governance
Clackamas County Coordinating Committee (C-4)	C-4 was founded by the County to promote a partnership between the County, its Cities, Special Districts, Hamlets, Villages and Community Planning Organizations (CPOs). C-4 provides Councilors with an opportunity to network and work on building consensus on regional issues.	Voting membership shall consist of one elected representative and an elected alternate appointed by the City Council	<u>Rebecca Stavenjord</u>	Emma Sagor	Yes	Meetings are held on the first Thursday of the month starting at 6:45 p.m. in the Public Services Building of Clackamas County.	Governance
Clackamas County Coordinating Committee (C-4) – Metro Sub-Committee	C-4 members who are within the Metro jurisdiction shall be a subcommittee of C-4 named Metro subcommittee to discuss JPACT and MPAC issues. This subcommittee shall at a minimum be the body which nominates and elects cities' representatives to: JPACT, MPAC, TPAC, MTAC, respectively.	Nominations and elections shall occur in November of each even numbered year in accordance with Metro Charter requirements.	<u>Rebecca Stavenjord</u>	Emma Sagor, Joseph Briglio	Yes	Meetings are held on the third Wednesday of the month at 7:30 in the Clackamas County's Development Services Building.	Transportation, Land use and development
Clackamas County Coordinating Committee (C-4) – Toll Strategy Sub-Committee	A subgroup of the Clackamas County Coordinating Committee (C4) comprised of C4 members and additional community leaders invested in the outcomes of diversion impacts on local communities anticipated by the proposed tolling of I-205.		<u>Rebecca Stavenjord</u>			Meetings are held on the third Wednesday of the month at noon.	Transportation
Clackamas County Fire District #1 District Board Subcommittee	Purpose is to discuss collaborative opportunities, long-term facility needs, emergency preparedness, impacts of compression, and other challenges facing communities being served.	Subcommittee consists of two Fire Board members and two Council Members appointed by respective jurisdiction.	<u>Adam Khosorobadi</u> <u>Vacant</u>		Yes	Development Services Building 150 Beaver Creek Rd. Oregon City, OR 97045	Public safety
Clackamas County Library District Advisory Committee	Purpose is to advise the Clackamas County Library Service District (Board of County Commissioners) to support two county libraries and ten city libraries.	Committee involves 10 members that are typically appointed by respective library board. The advisory committee was created after the 2008 District creation.	<u>No Council Rep Needed</u>	Brent Husher	No	Meetings are held as needed.	Libraries
Clackamas County Childcare for All Task Force	A group convened by Clackamas County and Clackamas Education Service District on ways to provide greater access to affordable childcare options.		<u>Vacant - staff checking whether this is still meeting</u>			Meeting schedule under development.	Social services and affordability
Clackamas County Mayor and Chair	Broad topics that fall outside the scope of C4.	Ad hoc group – no formal appointment process.	<u>Lisa Batey</u>	Emma Sagor	No	Oregon City Library	Governance

**Milwaukie City Council
Council Committee Assignments**

Committee	Focus	Governing Authority	2024 Appointee	Staff Resources	Elected Rep Required	Meeting Schedule	Policy areas
Community Action Board	Members are appointed by the Clackamas County Board of County Commissioners. The group advocates both locally and at the state level on issues related to people and households with low-incomes.	Board is run by Clackamas County. 8 members and one alternate.	<u>Adam Khosroabadi</u>		No	Meetings are the first Wednesday of each month, 7:30 a.m. to 9 a.m.	Social services and affordability
Homeless Solutions of Clackamas County (HSCC) Board	HSCC's purpose is to bring together citizens, agencies, governments, churches, businesses, and schools in the Oregon City region to create partnerships that reduce homelessness.	Steering committee made up of co-founders and representatives of agencies, governments, churches, businesses, and schools.	<u>Rebecca Stavenjord and Robert Massey (staff confirming details for each HSCC body and membership may be adjusted)</u>		No	Meetings are held on the second Wednesday of the month from 2:00 p.m. to 3:30 p.m. at Providence Community Center in Oregon City. *Steering committee is expected to attend community meetings quarterly	Social services and affordability
Homeless Solutions of Clackamas County (HSCC) Quarterly North Clackamas Provider Networking Event			<u>Rebecca Stavenjord and Adam Khosroabadi (staff confirming details for each HSCC body and membership may be adjusted)</u>				Social services and affordability
League of Oregon Cities	Legislative Committees (any councilor can participate)	LOC Energy Policy Committee Community Development Committee	<u>TBD - Council members to express ex officio interest when list of committees is released</u>	Emma Sagor	Yes		Governance
Local Contract Review Board	Purpose is to review and adopt public contracting rules and findings as to amendments of professional services	Established via Resolution by Council.	<u>City Council</u>	Kelli Tucker	Yes	Meetings are held as needed.	Finance
Metro Mayor's Consortium	Advocate at Metro and State on issues that affect all metro cities.	Membership limited to 20 local mayors of the Portland Metro Region.	<u>Lisa Batey</u>	Emma Sagor	Yes	Meetings are held monthly on Wednesdays during lunchtime.	Governance
Milwaukie Redevelopment Commission	Facilitate and support urban renewal efforts in targeted areas of the City of Milwaukie	MRC	<u>City Council</u>		Yes	Meet as needed during Council work, study, and regular sessions	Land use and development
Milwaukie Redevelopment Commission Community Advisory Committee	Advise MRC on investment opportunities within the tax increment financing district.	MRC	<u>Rebecca Stavenjord</u>		Yes	Meets as needed to develop recommendations for MRC.	Land use and development
Milwaukie Parks and Recreation Board (PARB)	Advises City Council on parks related issues.	Comprised of 8 members appointed by City Council.	<u>Lisa Batey</u>	Peter Passarelli	Yes	Meetings are held on the 4th Wednesday of every month at 4:30 at the Ledding Library.	Parks
North Clackamas Chamber of Commerce and Public Policy Team	Purpose is to discuss policy issues in front of the Chamber for position consideration.	Representatives appointed by the Chamber Board.	<u>Adam Khosroabadi</u>	Vera Kalias Emma Sagor	No	Meetings are held on the first Monday of the month from 12 p.m. to 1:15 p.m. at the Chamber Offices.	Economic development
North Clackamas Parks and Recreation District Advisory Board (DAC)	Purpose is to make recommendations to the District Board of Directors on the design, planning and development of parks and the provision of recreational programs in the district.	Section E(2) of the May 1, 1990 Agreement between Clackamas County and the City provide for representation to the DAC. City Council appoints the DAC member.	<u>Lisa Batey</u>	Peter Passarelli	No	DAB meets monthly on the second Wednesday of every month from 5:00 to 7:00 PM	Parks
North Clackamas Social Needs Roundtable	Purpose is to prevent the spread of homelessness and food insecurity in Clackamas County.	Ad Hoc Committee comprised of school district, county, city, nonprofit, and private sector officials.	<u>Vacant - unclear if still meeting</u>		No	Meetings are held as needed. Typically, two to three times per year at a Milwaukie Church.	Social services and affordability
North Clackamas Watershed Council	The North Clackamas Watershed Council's purpose is to advocate for the protection and enhancement of the watersheds' fish and wildlife habitat and improve water quality through partnership with public and private entities, habitat restoration projects, community education and outreach, and strategic planning.	The number of Council Representatives may vary between a minimum of four (4) and a maximum of thirty (30). A minimum of one position will be reserved for each of the following watersheds and sub-basin areas; Upper Kellogg, Lower Kellogg, Lower Mt Scott, Dean, Middle Mt Scott/Cedar, Phillips, Upper Mt Scott, Minthorn Spring, Boardman Creek, River Forest, and Rinearson Creek. The term of office for Council Representatives shall be three years.	<u>Robert Massey</u>	Peter Passarelli	No	Meetings are held on the third Wednesday of the month from 6:00 p.m. to 8:00 p.m. at Oak Lodge Sanitary District.	Natural resources

**Milwaukie City Council
Council Committee Assignments**

Committee	Focus	Governing Authority	2024 Appointee	Staff Resources	Elected Rep Required	Meeting Schedule	Policy areas
Oregon Mayors Association (OMA), Portland Metro Region Team	Purpose is to create a forum for discussing a wide variety of issues, and, most importantly, a unified voice in Salem. Established in 1972, the Oregon Mayors Association is a voluntary association of persons who hold the office of mayor. OMA is recognized as an affiliate organization in cooperation with the League of Oregon Cities. Over two-thirds of Oregon mayors are active members of OMA.	The leadership of the OMA is vested in a Board of ten directors which include a President, President-elect, Secretary-Treasurer, Immediate Past President and six members at-large. The Immediate Past President and the Secretary-Treasurer serve as ex-officio-Directors. The Secretary-Treasurer position is a nonvoting position held by the Executive Director of the League of Oregon Cities Board members are elected at the annual meeting of the OMA, held at the League of Oregon Cities' Annual Conference. The OMA constitution requires that consideration be given to geographic and size diversity on the Board.	<u>Lisa Batey</u>	Emma Sagor	Yes	Meetings are held as needed either by way of teleconference or at League of Oregon Cities' Meetings.	Governance
WES Advisory Committee	On Sept. 14, 2017, the Board of County Commissioners of Clackamas County (BCC) acting as the governing body of WES, created a standing advisory committee consisting of customers, stakeholders and city representatives referred to as the Water Environment Services Advisory Committee.	Clackamas County	<u>Adam Khosroabadi</u>	Peter Passarelli	Yes		Natural resources, Utilities
Regional Water Providers Consortium	The Regional Water Providers Consortium serves as a collaborative and coordinating organization to improve the planning and management of municipal water supplies in the greater Portland, Oregon metropolitan region. Primary focus is conservation and planning interties of water systems to address emergency needs.	Formed in 1997, the Consortium serves the Multnomah, Clackamas, and Washington counties and is made up of 21 water providers and the regional government Metro. Together, these entities provide about 95 percent of the Portland metropolitan area's drinking water. Members of the Consortium are cities, water districts and a people's utility district throughout the Portland, Oregon metropolitan area. The regional government Metro is also a member. Participation in the Consortium is voluntary and is funded through membership dues.	Robert Massey	Peter Passarelli	No	Meetings are held three times per year. Typically, from 6:00 p.m. to 8:30 p.m. at Metro. Usually in the Metro Chambers.	Natural resources, Utilities
Transportation System Plan Advisory Committee (temporary duration, Spring 2023-early 2024)	Community based committee that will advise on the update of the TSP.	Committee is appointed by City Council.	<u>Rebecca Stavenjord</u>	Laura Weigel	Yes, as determined by City Council	Approx. 12/16 meetings over 12-18 months. Meeting time TBD. Likely on Thursday evenings from 6:00- 8:00.	Transportation



Council Retreat
7/9/24
Presentation

Summer 2024 **Council Retreat**

July 9, 2024 | 5:45 – 8 p.m.



Agenda



COUNCIL NORMS AND
WORKING AGREEMENTS



FINANCIAL STABILITY
STRATEGY



LOOKING FORWARD

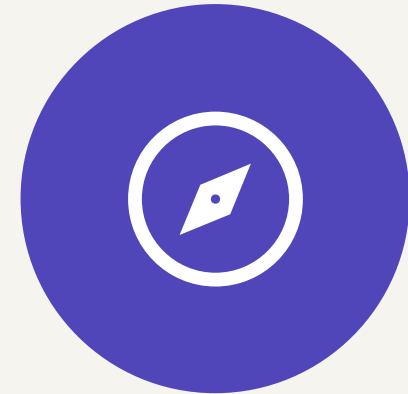
Retreat objectives



- Refresh communications agreement
- Identify ways to improve meeting effectiveness
- Clarify liaison responsibilities
- Determine six-month team objectives




- Understand scope and schedule for financial stability strategy
- Define evaluation criteria and universe of options
- Clarify roles



- Review bike rack
- Establish "wish list" for winter retreat
- Recap take-aways from this retreat

Meeting agreements

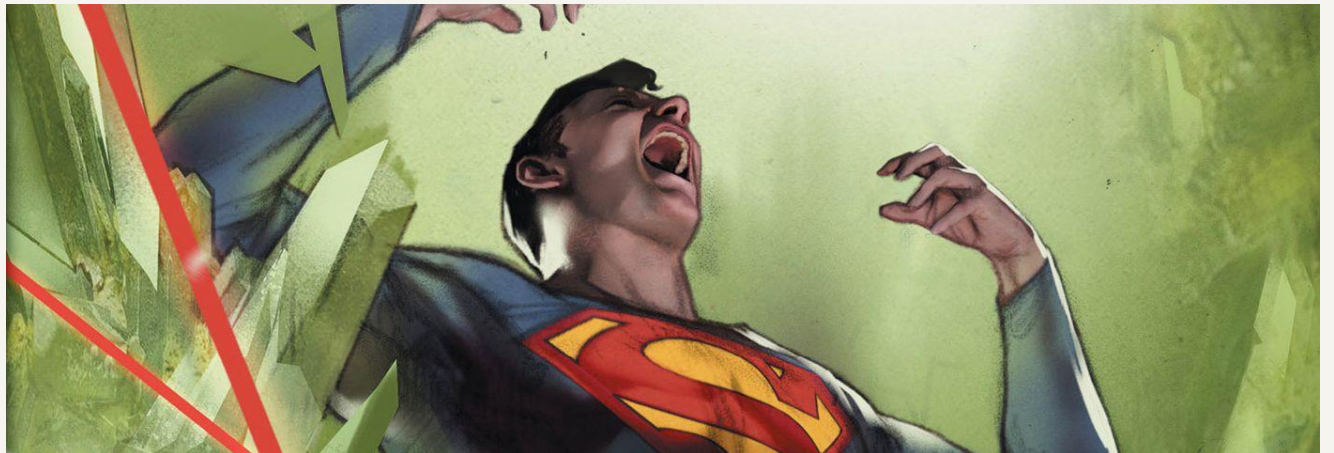
- Speak honestly, respectfully, and transparently. Clarity is kindness.
 - Listen to understand, not to respond.
 - Share the air. Make sure all have room to speak and share their thoughts.
 - Be solution-oriented. Share challenges openly but focus on opportunity for improvement.
 - Stay present and participate actively. Take breaks as needed.
 - Respect different opinions. We don't all have to agree.
 - Be mindful of time. We will give conversations the room they need but make sure we end on time.
- 

Warm up question

What's your superpower?



What's your kryptonite?



*Council norms
and working
agreements*



*Council
norms and
working
agreements:
Why start
here?*

- With **new team members** come **new opportunities**
- Six months out from goal setting – this is the time to **solidify the foundation**
- Unpack the **concept of “team”**
 - Assumptions of how Council *would* operate
 - Requirements for how Council *must* operate
 - Desires for how Council *should* operate

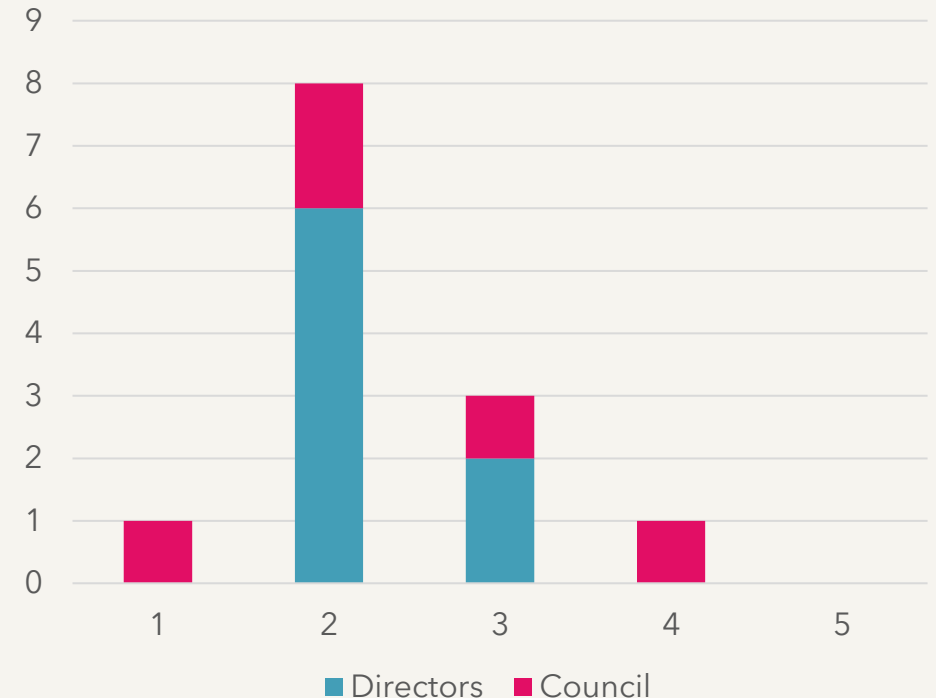
*Team
assumptions:
What did we
expect this
to look like?*

- Council would **define and work toward clear goals** with measurable outcomes
 - **Thought leader(s)** would emerge
 - Council would **collaborate** frequently
 - Council would work to **understand each other's motivations, empower each other**, and build **cohesion**
 - Focused on **forward movement**
-
- Council would be **focused**
 - Council would **communicate effectively** with each other and the public
 - Council would **steer policy**
 - **Clearer roles:** Council would define policy priorities; staff would do day-to-day work to get us there

Communication

- What are some examples of times we've communicated well as a team?
- What are some examples of times we've seen communication not work or break down?
- What changes need to be made to the **communication agreement** to improve team communications?

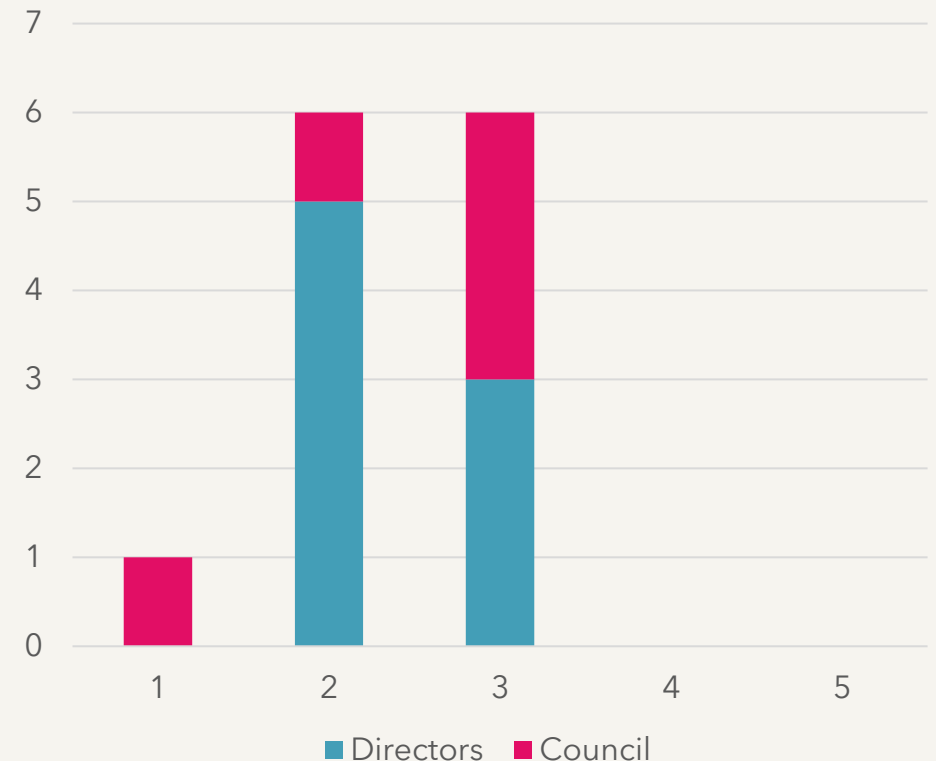
How effectively do you feel Council **communicates with one another as a team?**
(1=not at all; 5=very effectively)



Effective meetings

- What is working/not working at our meetings in terms of *advancing our work*?
- What is working/not working at our meetings in terms of *providing clear direction to staff*?
- How might we change **norms or processes related to our meetings to make them more effective**?

How effectively do you feel Council **uses its meetings**?
(1=not at all; 5=very effectively)



Council Meeting Types

Study Session	Work Session	Regular Session	Executive Session
<ul style="list-style-type: none">• Generally once a month• Purpose: Learn about new concepts, ideas, projects, etc.	<ul style="list-style-type: none">• Generally twice a month• Purpose: Discuss/debate concepts, review and provide feedback on draft products	<ul style="list-style-type: none">• Generally twice a month• Purpose: Hear community comment, take votes, provide direction	<ul style="list-style-type: none">• As needed• Purpose: Discuss confidential topics



Across all:

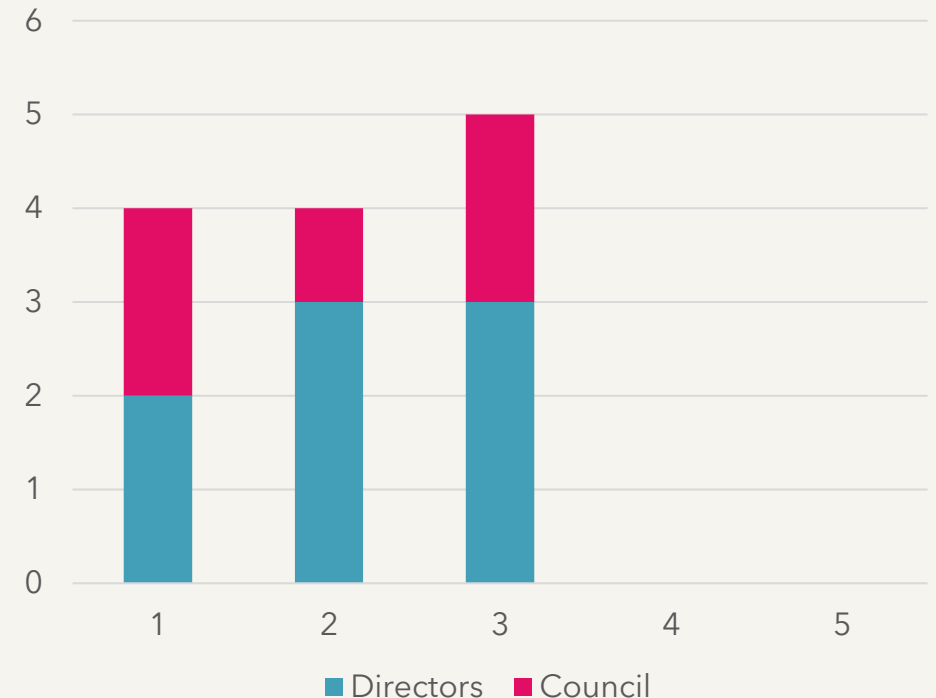
- Councilors may add an agenda item with a “second” (Mayor can add topics at will)
- Majority of Council agreement needed to provide direction
- Communication agreement/one-hour rule applies
- Goals provide a frame: What work should be prioritized?

Defining/advancing priorities

- What would success look like in this area?
- What priorities are we feeling most stuck on advancing?
- How might we use **committee and liaison assignments more strategically** to advance priorities of the council?

How effectively do you feel Council **defines and advances priorities?**

(1=not at all; 5=very effectively)



Committee liaison assignments: Policy swim lanes?

- Governance and intergovernmental relations
- Public utilities
- Natural resources and parks
- Social services and houselessness
- Land use and development
- Economic development
- Public safety
- Finance
- Transportation



*Six-month
priorities:
What do we
most want
to work on?*

- **Break down goals** into more specific deliverables/outcomes
- Make **meetings more effective** - focus on policy over details
- Increase opportunities for **discussion** (e.g., longer work sessions?)
- Better **preparation** for meetings
- More **collaboration and trust-building** among councilmembers
- More engagement in upcoming **legislative session**

- Define more **measurable, focused, tangible goals**
- **Better listening** and **more productive conversations** in meetings
- Provide **clearer direction to staff** in meetings - even when there is not consensus
- Function more as a **team**

Quick break

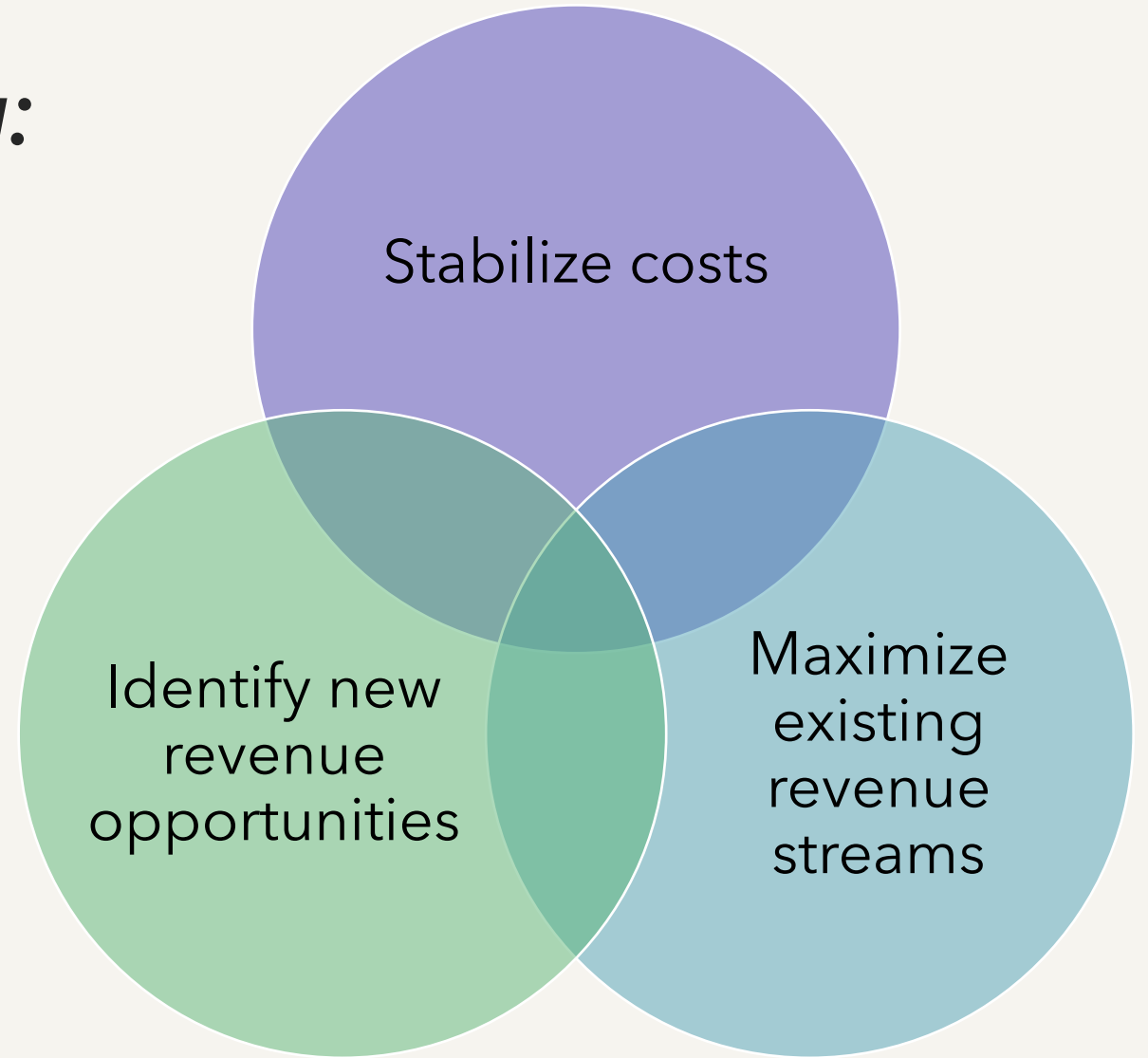


*Financial Stability
Strategy*



Financial stability strategy: Objectives

- Find ways to further **stabilize costs** across the organization
- Review and **maximize existing revenue streams**
- Support Council in selecting **1-3 new revenue strategies** to pursue based on agreed upon criteria
- Ensure five-year forecast remains up-to-date



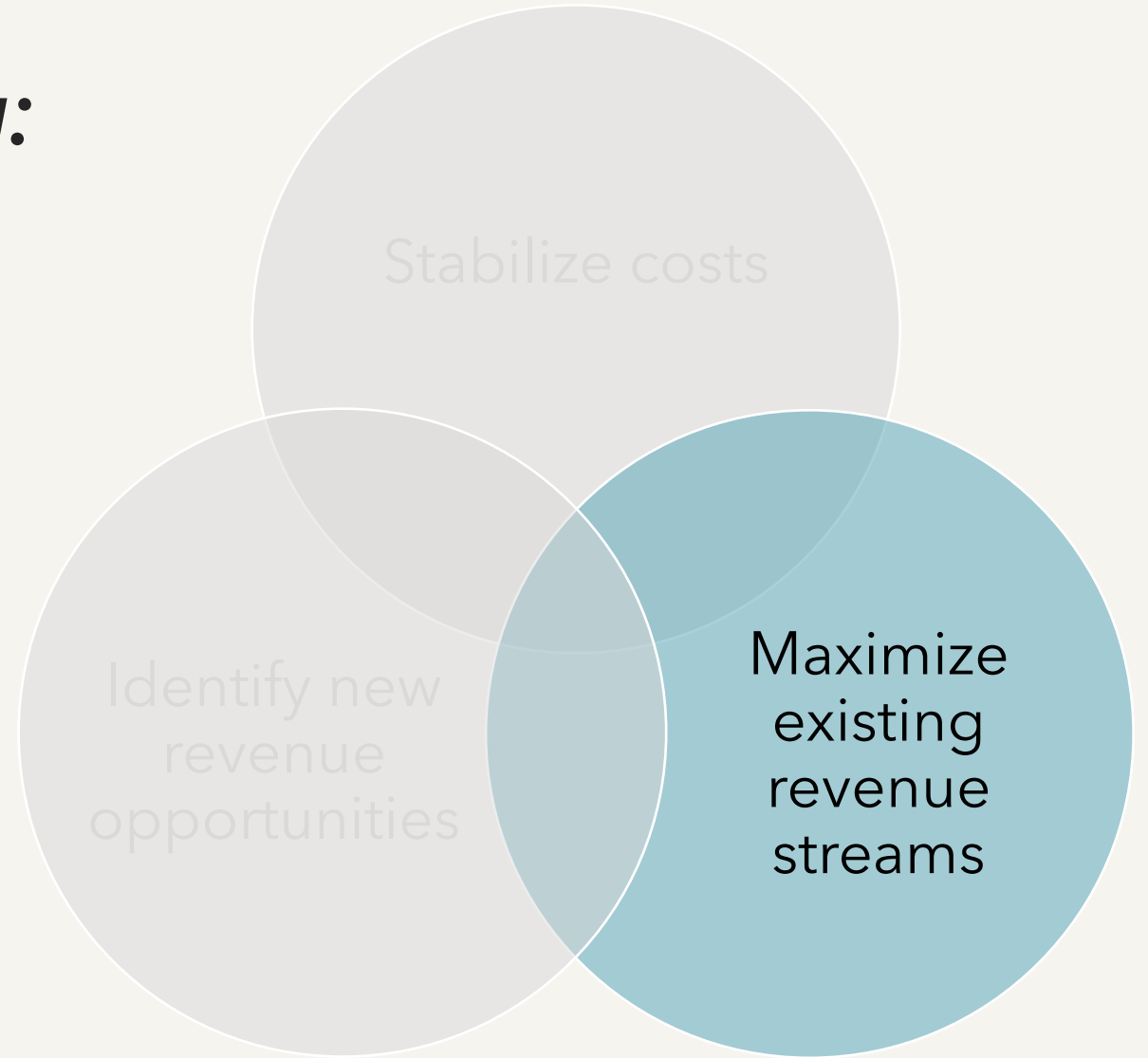
Financial stability strategy: Objectives

- Review organizational structure for potential efficiencies and cost savings
- Continue reviewing and streamlining technological services
- Be fiscally prudent - continue holding the line



Financial stability strategy: Objectives

- Review and update fee schedule to ensure we're recouping costs
- Propose improvements that could increase revenue capture



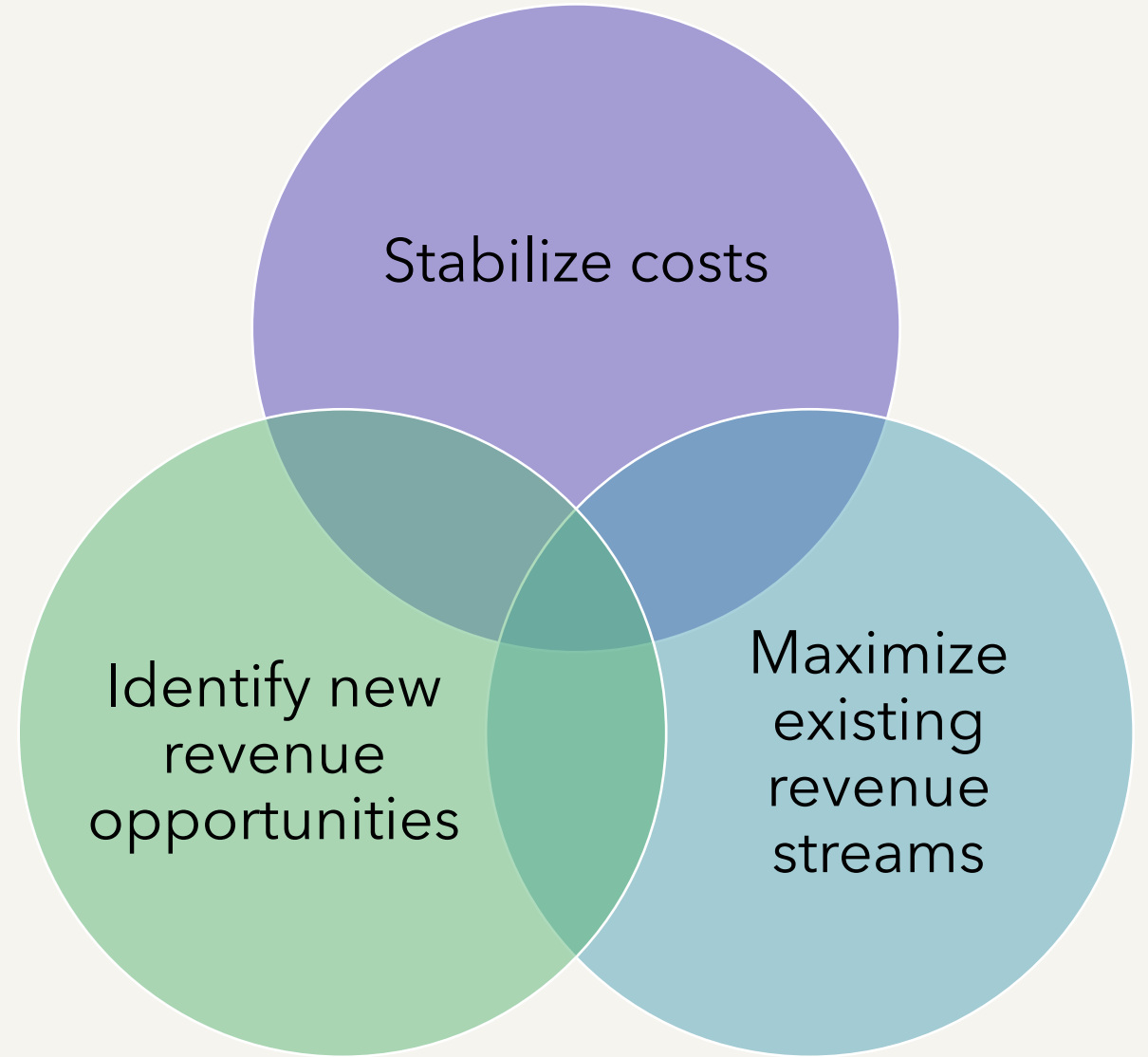
Financial stability strategy: Objectives

- Help Council identify 1-3 new revenue ideas for implementation planning
- Communicate with stakeholders why new revenue sources are needed
- Secure support for new revenue mechanisms




Scope and parameters

- Focused on **general fund revenue** (though will track, report on, and pursue improvements for other funds)
- Goal: **Balance five-year forecast**
- Quarterly updates to Budget Committee; more frequent updates given to Council as needed



New revenue opportunities: Evaluation criteria



Identify new
revenue
opportunities

- **Feasibility** – can we implement this by end of the biennium?
- **Legality** – what is the risk of legal challenge or lawsuit?
- **Political appetite** – what is the political risk? What is the likelihood this gets referred to voters?
- **Implementation path** – can this be implemented by Council alone? Does it require a Council vote?
- **Revenue generating potential** – how much money could this bring in? To what fund?
- **Alignment with goals** – does this strategy have co-benefits that advance other policies or put policies at risk?
- **Equity** – who may be disproportionately burdened by this strategy?
- **Ongoing administration** – how much staff time/infrastructure is needed to oversee it?
- **Enforcement** – will we be able to collect the revenue?
- **Variability** – how predictable and sustainable would this revenue stream be?
- **Proven track record** – have other cities done this?

New revenue opportunities: Universe of Options



Changes to existing revenue streams:

- Property tax
 - 5-year levy
 - Permanent cap raise
- Business license tax update
- Further increase to ROW license fees
- Advocacy for changing library tax rate
- Install photo red light program
- Leverage URA monies to offset general fund

New revenue streams:

- Paid public parking
- Delivery fee
- Public safety fee
- Credit card fees
- Luxury tax
- Vacancy tax
- Land use charge or land value tax

Infrastructure investments that could boost revenue:

- Upgrade to digital water meters

New services we could charge for:

- Broadband
- Leasing city-owned land

Financial stability strategy: Timeline

July - Sept '24

- Define strategy, scope, and evaluation criteria
- Compile "universe of options"
- Forecast review and fine tuning
- **BC meeting: August 26**

Oct - Dec '24

- Initial screening of revenue options
- Communication campaign prep
- Forecast review and fine tuning
- **BC meeting: November 18**

Jan - Mar '25

- Council goal setting
- Revenue options narrowed; direction to pursue top 1-3
- Implementation strategy developed
- Communication campaign launch: Why do we need revenue?
- Forecast review and fine tuning
- **BC meeting: February 10**

Apr - Jun '25

- Implementation strategy refined
- Continue communication
- **BC meeting: May 12**

Beyond

- Implementation - ready for November ballot, if needed

Financial stability strategy: How do we tackle this as a team?

- **Roles for Council:**

Determine values, goals, and evaluation criteria

Contribute ideas to the universe of options

Provide input and direction at clear milestones

Make policy decisions,

Help communicate need and direction to the community

- **Roles for finance:**

Overall project management

Define deadlines for financial asks and inputs from departments

Financial analysis and idea evaluation

Forecast monitoring

- **Roles for CM office:**

Coordinate Council communications

Lead public engagement

- **Roles for Department Directors:**

Contribute ideas to the universe of options

Help with analysis/vetting/subject matter expertise

Be budget aware—monitor your own budgets

Consult your peers in other cities—what are they doing?

Looking forward

*What's on
the bike
rack?*

*Are any changes
needed to this
process?*



*Council's
winter
retreat:
What are
our
priorities?*

- What do you want to accomplish at the next retreat?
- What do you think would make the next retreat most successful?

Timing - before or after new year?

Length

Location

Facilitation - internal or external?





Action item recap

Closing question: What will you take away from tonight's discussion?

